



Airport Master Plan

Development Alternatives

April 2, 2025



- **Agenda**

- Introductions
- Project Overview / Status
- Recommended Development Overview
- Alternative Layouts

- **Meeting Objective**

- Solicit feedback on development alternatives of recommended development objectives

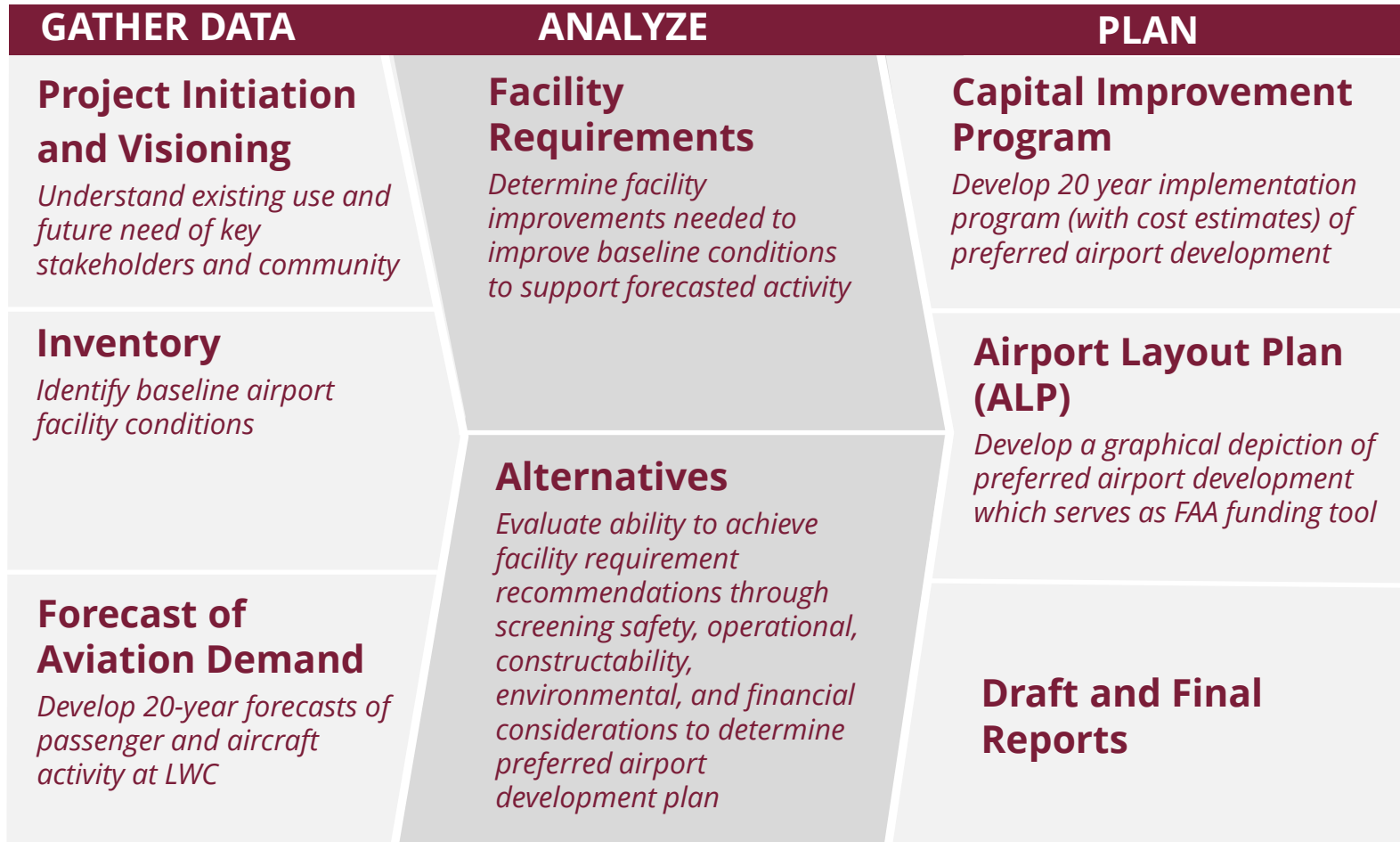
Master Plans – What Does It Do?

- Provides 20-year infrastructure development plan
- Collaborative planning process with City and Community
- Updates Airport Layout Plan for federal funding eligibility

Master Plans – What Does It Not Do?

- Guarantee development will occur
- Environmental clearance for projects
- Obligate the City for future funding needs
- Provide direction for business or strategic growth

Master Plan Process



Recommended Development - Airside

- Extend Runway 15-33 for existing users
- Upgrade Runway 1-19 for general aviation users
- Taxiway system improvements

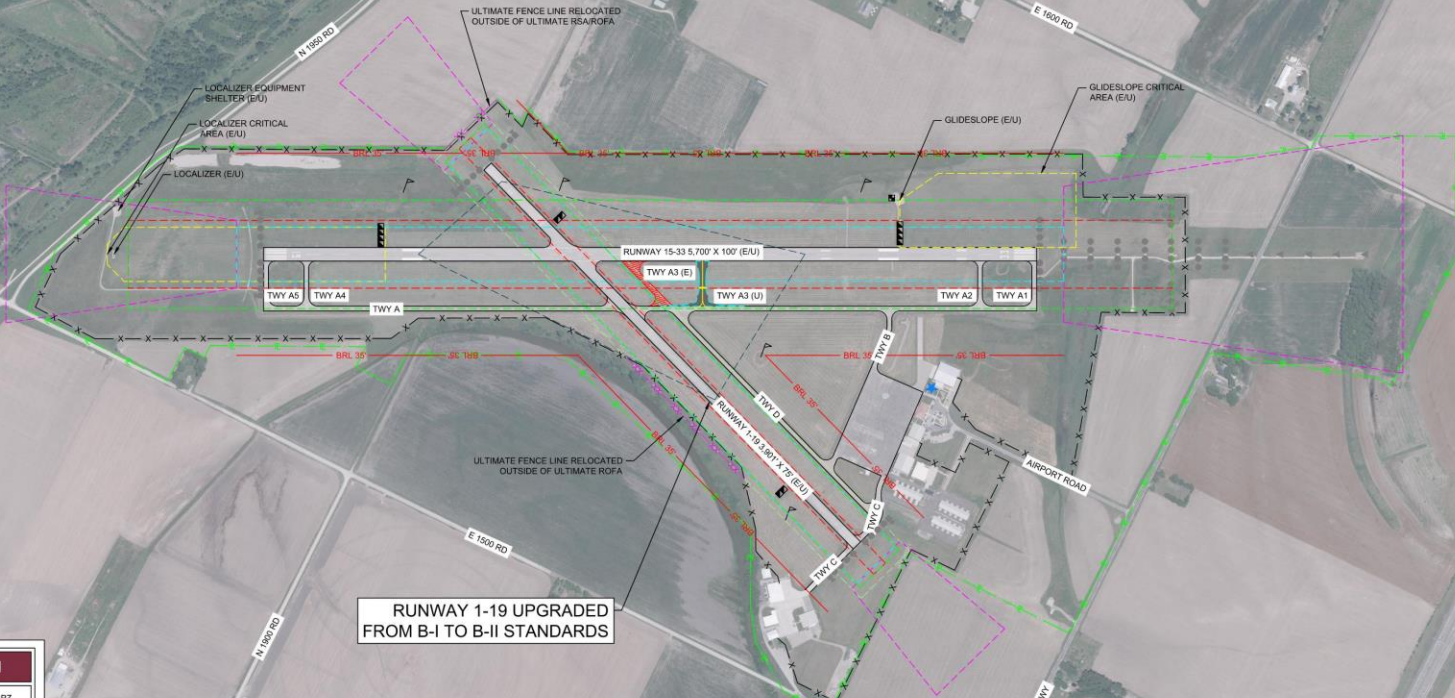
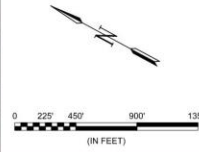
Recommended Development - Landside

- Expand aircraft parking apron for forecasted demand
- Heliport / Vertiport development
- Hangar development for existing aircraft demand
- Expansion of terminal area parking
- Protection for SRE / ARFF facility
- Protection for solar farm

Airside Alternatives

Lawrence Regional Airport

AIRSIDE ALTERNATIVE #1



RUNWAY 1-19 UPGRADED
FROM B-I TO B-II STANDARDS

IMPROVEMENTS NOT SHOWN

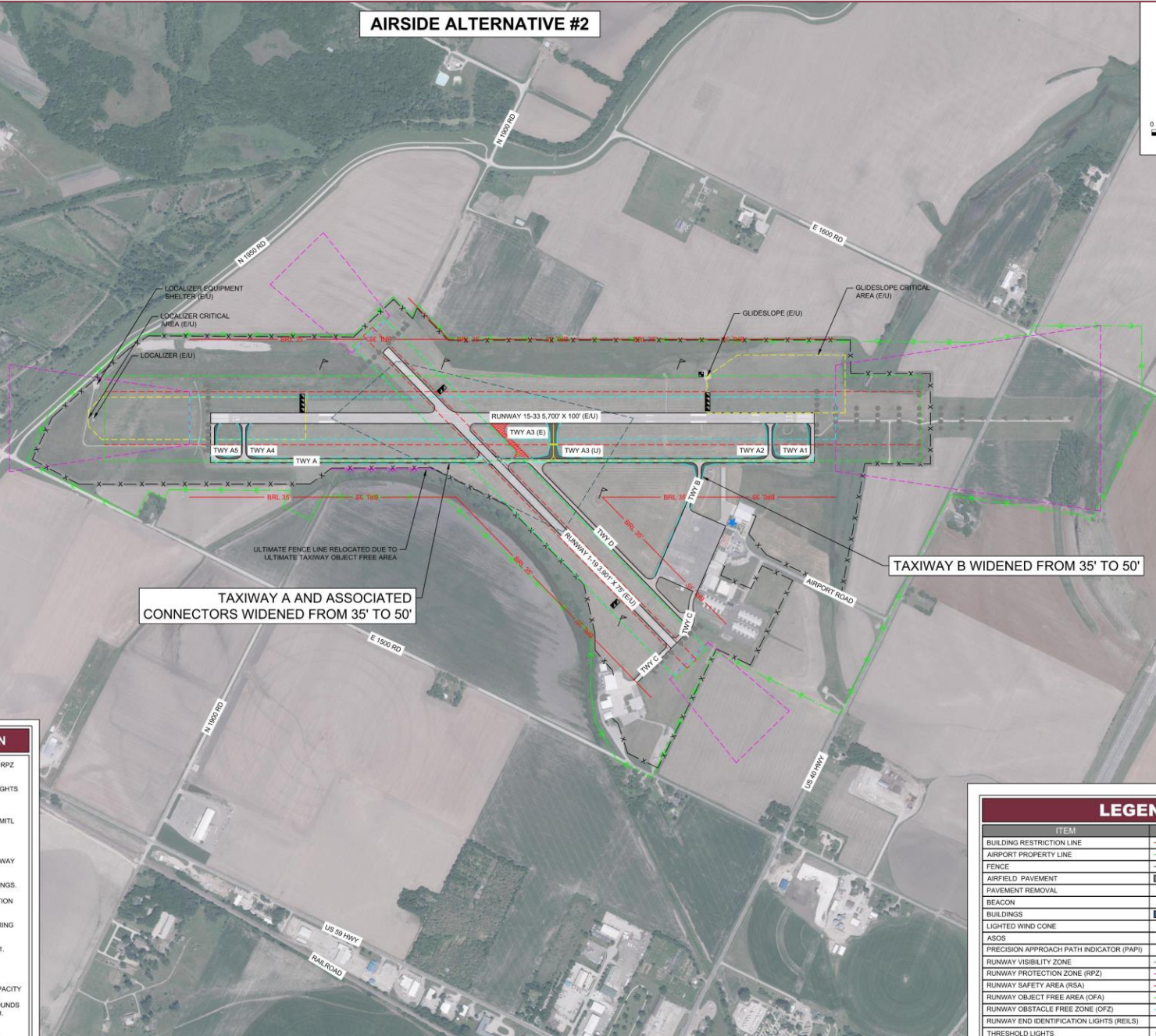
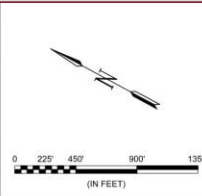
1. ACQUIRE A CONTROLLING INTEREST IN UNOWNED RPZ PROPERTY.
2. REPLACE EXISTING MEDIUM INTENSITY RUNWAY LIGHTS (MIRL) FOR RUNWAY 15-33 AND RUNWAY 1-19.
3. REPLACE EXISTING MEDIUM INTENSITY TAXIWAY LIGHTING (MITL) WITH LED FIXTURES AND INSTALL MITL ALONG TAXIWAY D.
4. REPLACE AIRFIELD SIGNAGE.
5. REPAINT AND REDESIGNATE RUNWAY 1-19 TO RUNWAY 2-20 DURING THE NEXT RUNWAY PROJECT.
6. REPAINT ALL CHIPPED AND FADED TAXIWAY MARKINGS.
7. REMOVE NON-STANDARD RUNWAY HOLDING POSITION MARKING ON RUNWAY 1-19.
8. MAINTAIN THE RUNWAY 33 ILS AND LOCALIZER DURING THE PLANNING HORIZON.
9. ESTABLISH AN RNAV/GPS APPROACH TO RUNWAY 1.
10. ESTABLISH AN RNAV/GPS APPROACH WITH LPV MINIMUMS TO RUNWAY 15.
11. INCREASE THE DUAL-WHEEL WEIGHT BEARING CAPACITY OF RUNWAY 15-33 TO 90,000 POUNDS DURING THE PLANNING HORIZON AND PROTECT FOR 150,000 POUNDS DUAL WHEEL DURING THE POST-PLANNING PERIOD.
12. UPDATE TAXIWAY FILETS TO CURRENT DESIGN STANDARDS AS TAXIWAYS ARE RECONSTRUCTED.

LEGEND

ITEM	EXISTING	ULTIMATE
BUILDING RESTRICTION LINE	BRL 35'	BRL 35'
AIRPORT PROPERTY LINE	E	XX
FENCE	X	XX
AIRFIELD PAVEMENT		
PAVEMENT REMOVAL		
BEACON		
BUILDINGS		
LIGHTED WIND CONE		
ASOS		
PRECISION APPROACH PATH INDICATOR (PAPI)		
RUNWAY VISIBILITY ZONE		
RUNWAY PROTECTION ZONE (RPZ)		
RUNWAY SAFETY AREA (RSA)		
RUNWAY OBJECT FREE AREA (OFA)		
RUNWAY OBSTACLE FREE ZONE (OFZ)		
RUNWAY END IDENTIFICATION LIGHTS (REILS)	HH	HH
THRESHOLD LIGHTS	HH	HH

Lawrence Regional Airport

AIRSIDE ALTERNATIVE #2



TAXIWAY A AND ASSOCIATED CONNECTORS WIDENED FROM 35' TO 50'

TAXIWAY B WIDENED FROM 35' TO 50'

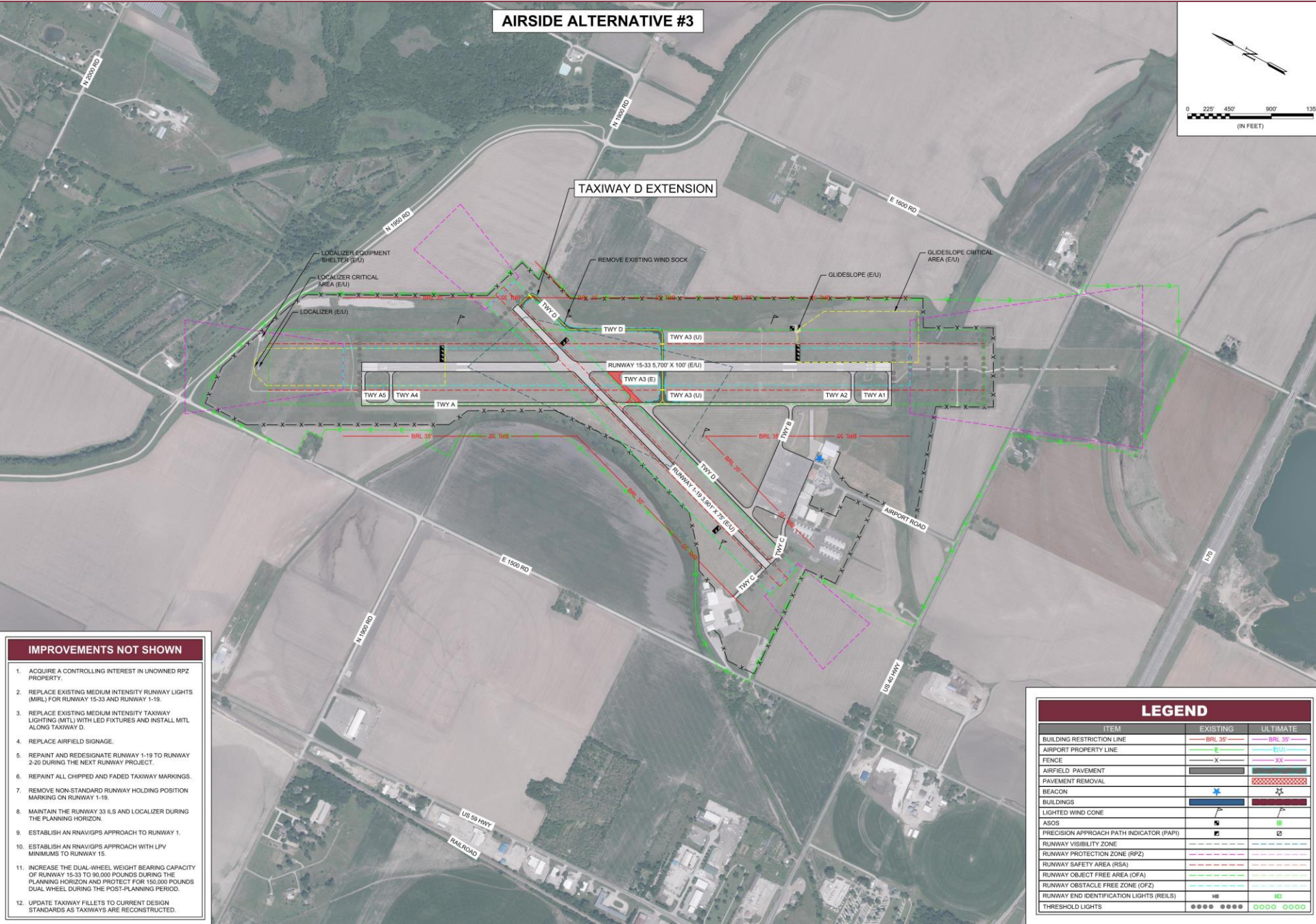
IMPROVEMENTS NOT SHOWN

1. ACQUIRE A CONTROLLING INTEREST IN UNOWNED RPZ PROPERTY.
2. REPLACE EXISTING MEDIUM INTENSITY RUNWAY LIGHTS (MIRL) FOR RUNWAY 15-33 AND RUNWAY 1-19.
3. REPLACE EXISTING MEDIUM INTENSITY TAXIWAY LIGHTING (MTL) WITH LED FIXTURES AND INSTALL MTL ALONG TAXIWAY D.
4. REPLACE AIRFIELD SIGNAGE.
5. REPAINT AND REDESIGNATE RUNWAY 1-19 TO RUNWAY 2-20 DURING THE NEXT RUNWAY PROJECT.
6. REPAINT ALL CHIPPED AND FADED TAXIWAY MARKINGS.
7. REMOVE NON-STANDARD RUNWAY HOLDING POSITION MARKING ON RUNWAY 1-19.
8. MAINTAIN THE RUNWAY 33 ILS AND LOCALIZER DURING THE PLANNING HORIZON.
9. ESTABLISH AN RNAV/GPS APPROACH TO RUNWAY 1.
10. ESTABLISH AN RNAV/GPS APPROACH WITH LPV MINIMUMS TO RUNWAY 15.
11. INCREASE THE DUAL-WHEEL WEIGHT BEARING CAPACITY OF RUNWAY 15-33 TO 90,000 POUNDS DURING THE PLANNING HORIZON AND PROTECT FOR 150,000 POUNDS DUAL WHEEL DURING THE POST-PLANNING PERIOD.
12. UPDATE TAXIWAY FILLETS TO CURRENT DESIGN STANDARDS AS TAXIWAYS ARE RECONSTRUCTED.

LEGEND

ITEM	EXISTING	ULTIMATE
BUILDING RESTRICTION LINE	BRL 35'	BRL 50'
AIRPORT PROPERTY LINE	E	XX
FENCE	X	XX
AIRFIELD PAVEMENT		
PAVEMENT REMOVAL		
BEACON	*	*
BUILDINGS		
LIGHTED WIND CONE		
ASOS		
PRECISION APPROACH PATH INDICATOR (PAPI)		
RUNWAY VISIBILITY ZONE		
RUNWAY PROTECTION ZONE (RPZ)		
RUNWAY SAFETY AREA (RSA)		
RUNWAY OBJECT FREE AREA (OFA)		
RUNWAY OBSTACLE FREE ZONE (OFZ)		
RUNWAY END IDENTIFICATION LIGHTS (REIL)	HE	NO
THRESHOLD LIGHTS	●●●● ●●●●	●●●● ●●●●

Lawrence Regional Airport



AIRSIDE ALTERNATIVE #3

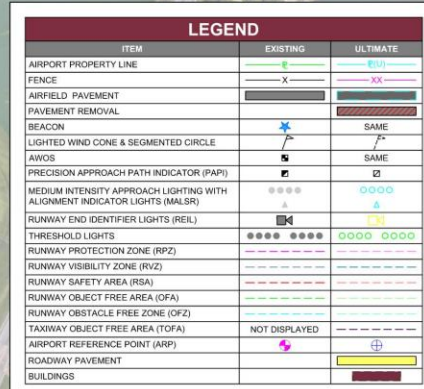
TAXIWAY D EXTENSION

IMPROVEMENTS NOT SHOWN

1. ACQUIRE A CONTROLLING INTEREST IN UNOWNED RPZ PROPERTY.
2. REPLACE EXISTING MEDIUM INTENSITY RUNWAY LIGHTS (MIRL) FOR RUNWAY 15-33 AND RUNWAY 1-19.
3. REPLACE EXISTING MEDIUM INTENSITY TAXIWAY LIGHTING (MTL) WITH LED FIXTURES AND INSTALL MTL ALONG TAXIWAY D.
4. REPLACE AIRFIELD SIGNAGE.
5. REPAINT AND REDESIGNATE RUNWAY 1-19 TO RUNWAY 2-20 DURING THE NEXT RUNWAY PROJECT.
6. REPAINT ALL CHIPPED AND FADED TAXIWAY MARKINGS.
7. REMOVE NON-STANDARD RUNWAY HOLDING POSITION MARKING ON RUNWAY 1-19.
8. MAINTAIN THE RUNWAY 33 ILS AND LOCALIZER DURING THE PLANNING HORIZON.
9. ESTABLISH AN RNAV/GPS APPROACH TO RUNWAY 1.
10. ESTABLISH AN RNAV/GPS APPROACH WITH LPV MINIMUMS TO RUNWAY 15.
11. INCREASE THE DUAL-WHEEL WEIGHT BEARING CAPACITY OF RUNWAY 15-33 TO 90,000 POUNDS DURING THE PLANNING HORIZON AND PROTECT FOR 150,000 POUNDS DUAL WHEEL DURING THE POST-PLANNING PERIOD.
12. UPDATE TAXIWAY FILLETS TO CURRENT DESIGN STANDARDS AS TAXIWAYS ARE RECONSTRUCTED.

LEGEND

ITEM	EXISTING	ULTIMATE
BUILDING RESTRICTION LINE	BRL 35'	BRL 35'
AIRPORT PROPERTY LINE	E	XX
FENCE	XX	XX
AIRFIELD PAVEMENT	XX	XX
PAVEMENT REMOVAL	XX	XX
BEACON	XX	XX
BUILDINGS	XX	XX
LIGHTED WIND CONE	XX	XX
ASOS	XX	XX
PRECISION APPROACH PATH INDICATOR (PAPI)	XX	XX
RUNWAY VISIBILITY ZONE	XX	XX
RUNWAY PROTECTION ZONE (RPZ)	XX	XX
RUNWAY SAFETY AREA (RSA)	XX	XX
RUNWAY OBJECT FREE AREA (OFA)	XX	XX
RUNWAY OBSTACLE FREE ZONE (OFZ)	XX	XX
RUNWAY END IDENTIFICATION LIGHTS (REIL)	XX	XX
THRESHOLD LIGHTS	XX	XX

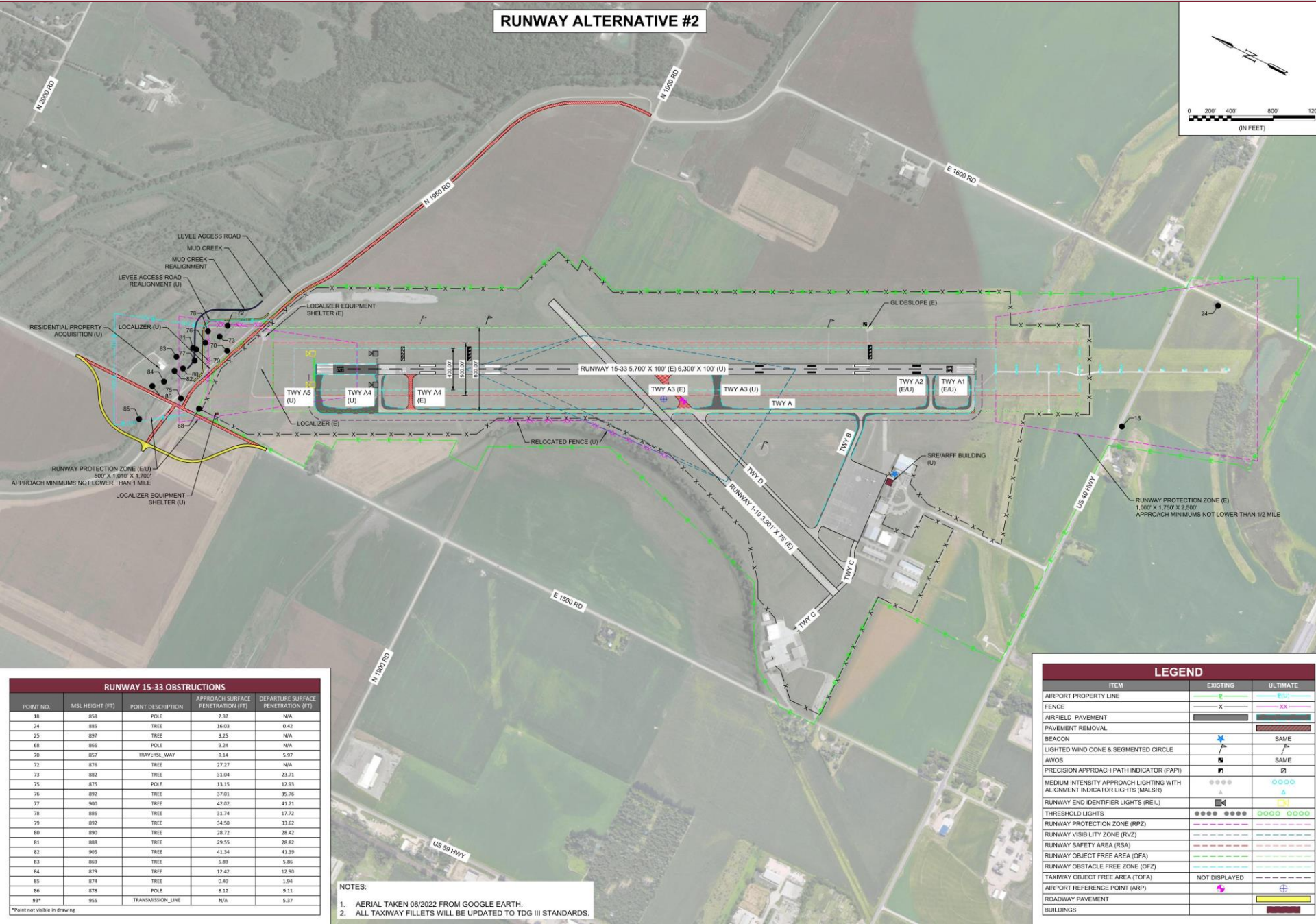


RUNWAY 15-33 OBSTRUCTIONS				
POINT NO.	MSL HEIGHT (FT)	POINT DESCRIPTION	APPROACH SURFACE PENETRATION (FT)	DEPARTURE SURFACE PENETRATION (FT)
18	858	POLE	28.01	N/A
24	885	TREE	36.66	N/A
25	897	TREE	23.88	5.08
64	848	TRAVELING WAY	5.03	N/A
68	888	TREE	27.88	N/A
71	898	TREE	34.97	N/A
72	876	TREE	9.62	10.08
73	882	TREE	13.39	14.18
74	885	TREE	19.19	N/A
76	892	TREE	19.36	20.76
77	900	TREE	24.37	26.21
78	886	TREE	14.09	15.38
79	892	TREE	16.86	18.62
80	890	TREE	11.08	17.42
81	888	TREE	11.90	13.82
82	905	TREE	23.70	26.39

NOTES:

1. AERIAL TAKEN 08/2022 FROM GOOGLE EARTH.
2. ALL TAXIWAY FILLETS WILL BE UPDATED TO TDG III STANDARDS.

Lawrence Regional Airport



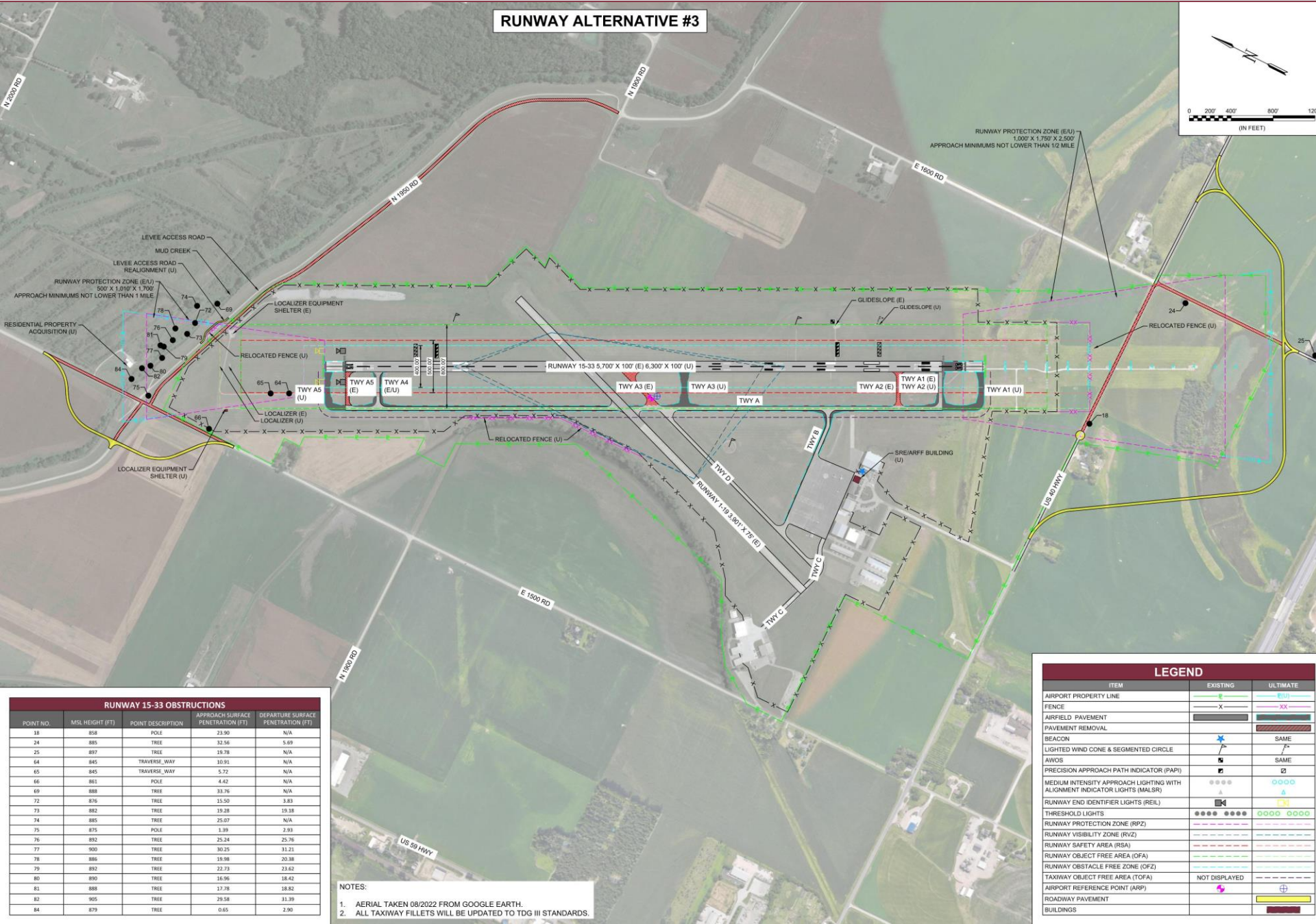
RUNWAY ALTERNATIVE #2

RUNWAY 15-33 OBSTRUCTIONS				
POINT NO.	MSL HEIGHT (FT)	POINT DESCRIPTION	APPROACH SURFACE PENETRATION (FT)	DEPARTURE SURFACE PENETRATION (FT)
18	858	POLE	7.37	N/A
24	885	TREE	16.03	0.42
25	897	TREE	3.25	N/A
68	866	POLE	9.24	N/A
70	857	TRAVERSE_WAY	8.14	5.97
72	876	TREE	27.27	N/A
73	882	TREE	31.04	23.71
75	875	POLE	13.15	12.93
76	892	TREE	37.61	35.76
77	900	TREE	42.02	41.21
78	886	TREE	31.74	17.72
79	892	TREE	34.50	33.62
80	890	TREE	28.72	28.42
81	888	TREE	29.55	28.82
82	905	TREE	41.34	41.39
83	869	TREE	5.89	5.86
84	879	TREE	12.42	12.90
85	874	TREE	0.40	1.94
86	878	POLE	8.13	9.11
93*	955	TRANSMISSION_LINE	N/A	5.37

- NOTES:
1. AERIAL TAKEN 08/2022 FROM GOOGLE EARTH.
 2. ALL TAXIWAY FILLETS WILL BE UPDATED TO TDG III STANDARDS.

LEGEND		
ITEM	EXISTING	ULTIMATE
AIRPORT PROPERTY LINE		
FENCE		
AIRFIELD PAVEMENT		
PAVEMENT REMOVAL		
BEACON		
LIGHTED WIND CONE & SEGMENTED CIRCLE		
AVIATION		
PRECISION APPROACH PATH INDICATOR (PAPI)		
MEDIUM INTENSITY APPROACH LIGHTING WITH ALIGNMENT INDICATOR LIGHTS (MALSR)		
RUNWAY END IDENTIFIER LIGHTS (REIL)		
THRESHOLD LIGHTS		
RUNWAY PROTECTION ZONE (RPZ)		
RUNWAY VISIBILITY ZONE (RVZ)		
RUNWAY SAFETY AREA (RSA)		
RUNWAY OBJECT FREE AREA (OFA)		
RUNWAY OBSTACLE FREE ZONE (OFZ)		
TAXIWAY OBJECT FREE AREA (TOFA)		
AIRPORT REFERENCE POINT (ARP)		
ROADWAY PAVEMENT		
BUILDINGS		

Lawrence Regional Airport



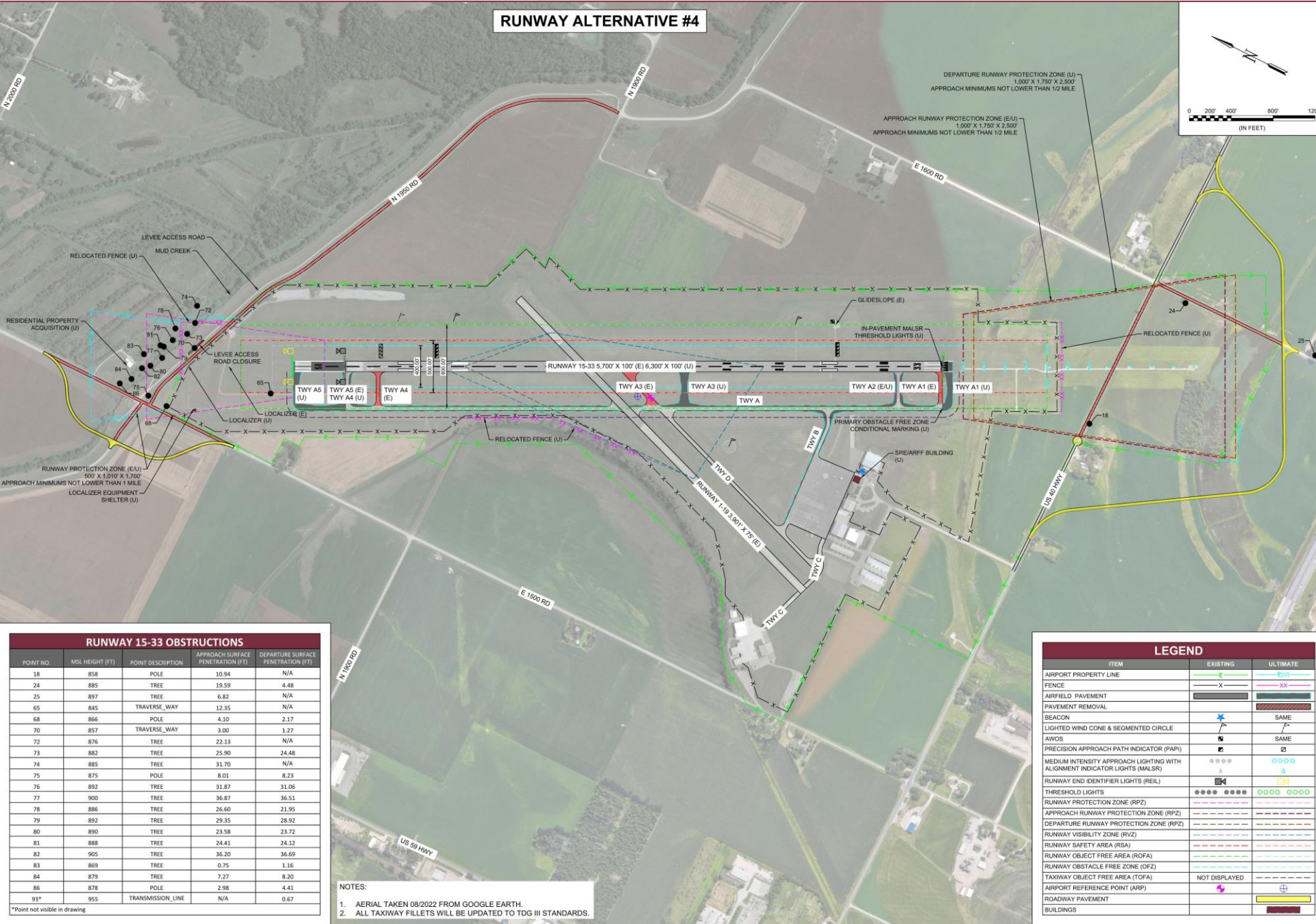
RUNWAY ALTERNATIVE #3

RUNWAY 15-33 OBSTRUCTIONS				
POINT NO.	MSL HEIGHT (FT)	POINT DESCRIPTION	APPROACH SURFACE PENETRATION (FT)	DEPARTURE SURFACE PENETRATION (FT)
18	858	POLE	23.90	N/A
24	885	TREE	32.56	5.69
25	897	TREE	19.78	N/A
64	845	TRAVERSE_WAY	10.91	N/A
65	845	TRAVERSE_WAY	5.72	N/A
66	861	POLE	4.42	N/A
69	888	TREE	31.76	N/A
72	876	TREE	15.50	3.83
73	882	TREE	19.28	19.18
74	885	TREE	25.07	N/A
75	875	POLE	1.39	2.93
76	892	TREE	25.24	25.76
77	900	TREE	30.25	31.21
78	896	TREE	16.98	20.98
79	892	TREE	22.73	23.62
80	890	TREE	16.96	18.42
81	888	TREE	17.78	18.82
82	905	TREE	29.58	31.39
84	879	TREE	0.65	2.90

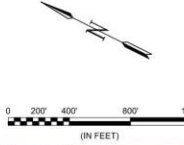
- NOTES:
1. AERIAL TAKEN 08/2022 FROM GOOGLE EARTH.
 2. ALL TAXIWAY FIELTETS WILL BE UPDATED TO TDG III STANDARDS.

LEGEND		
ITEM	EXISTING	ULTIMATE
AIRPORT PROPERTY LINE	---	---
FENCE	X	XX
AIRFIELD PAVEMENT	---	---
PAVEMENT REMOVAL	---	---
BEACON	✱	SAME
LIGHTED WIND CONE & SEGMENTED CIRCLE	✱	SAME
AVIONS	✱	SAME
PRECISION APPROACH PATH INDICATOR (PAPI)	---	---
MEDIUM INTENSITY APPROACH LIGHTING WITH ALIGNMENT INDICATOR LIGHTS (MALSR)	---	---
RUNWAY END IDENTIFIER LIGHTS (REIL)	---	---
THRESHOLD LIGHTS	---	---
RUNWAY PROTECTION ZONE (RPZ)	---	---
RUNWAY VISIBILITY ZONE (RVZ)	---	---
RUNWAY SAFETY AREA (RSA)	---	---
RUNWAY OBJECT FREE AREA (OFA)	---	---
RUNWAY OBSTACLE FREE ZONE (OFZ)	---	---
TAXIWAY OBJECT FREE AREA (TOFA)	---	---
AIRPORT REFERENCE POINT (ARP)	---	---
ROADWAY PAVEMENT	---	---
BUILDINGS	---	---

Lawrence Regional Airport



RUNWAY ALTERNATIVE #4



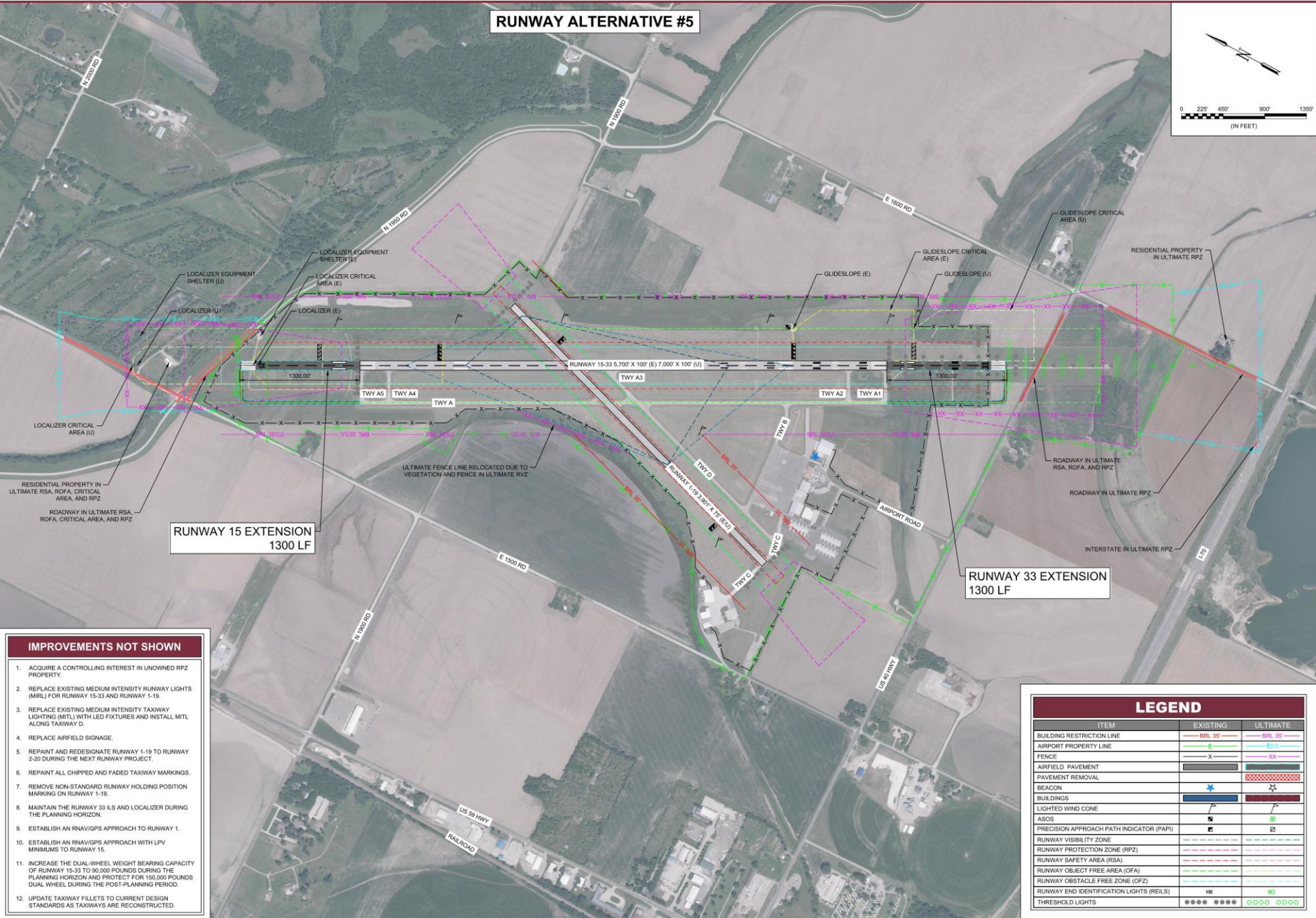
RUNWAY 15-33 OBSTRUCTIONS				
POINT NO.	MSL HEIGHT (FT)	POINT DESCRIPTION	APPROACH SURFACE PENETRATION (FT)	DEPARTURE SURFACE PENETRATION (FT)
18	858	POLE	10.94	N/A
24	885	TREE	19.59	4.48
25	897	TREE	6.82	N/A
65	845	TRAVERSE_WAY	12.35	N/A
68	866	POLE	4.10	2.17
70	857	TRAVERSE_WAY	3.00	1.27
72	876	TREE	22.13	N/A
73	882	TREE	25.90	24.48
74	885	TREE	31.70	N/A
75	875	POLE	8.01	8.23
76	892	TREE	31.87	31.06
77	900	TREE	36.87	36.51
78	886	TREE	26.60	21.95
79	892	TREE	29.35	28.92
80	890	TREE	23.58	23.72
81	888	TREE	24.41	24.12
82	905	TREE	36.20	36.69
83	869	TREE	0.75	1.16
84	879	TREE	7.27	8.20
86	878	POLE	2.98	4.41
93*	955	TRANSMISSION_LINE	N/A	0.67

*Point not visible in drawing

- NOTES:
1. AERIAL TAKEN 08/2022 FROM GOOGLE EARTH.
 2. ALL TAXIWAY FILETS WILL BE UPDATED TO TDG III STANDARDS.

LEGEND		
ITEM	EXISTING	ULTIMATE
AIRPORT PROPERTY LINE	—	—
FENCE	—	—
AIRFIELD PAVEMENT	—	—
PAVEMENT REMOVAL	—	—
BEACON	—	SAME
LIGHTED WIND CONE & SEGMENTED CIRCLE	—	SAME
AWOS	—	—
PRECISION APPROACH PATH INDICATOR (PAPI)	—	—
MEDIUM INTENSITY APPROACH LIGHTING WITH ALIGNMENT INDICATOR LIGHTS (MALSR)	—	—
RUNWAY END IDENTIFIER LIGHTS (REIL)	—	—
THRESHOLD LIGHTS	—	—
RUNWAY PROTECTION ZONE (RPZ)	—	—
APPROACH RUNWAY PROTECTION ZONE (RPZ)	—	—
DEPARTURE RUNWAY PROTECTION ZONE (RPZ)	—	—
RUNWAY VISIBILITY ZONE (RVZ)	—	—
RUNWAY SAFETY AREA (RSA)	—	—
RUNWAY OBJECT FREE AREA (ROFA)	—	—
RUNWAY OBSTACLE FREE ZONE (OFZ)	—	—
TAXIWAY OBJECT FREE AREA (TOFA)	—	—
AIRPORT REFERENCE POINT (ARP)	—	—
ROADWAY PAVEMENT	—	—
BUILDINGS	—	—

Lawrence Regional Airport



RUNWAY 15 EXTENSION
1300 LF

RUNWAY 33 EXTENSION
1300 LF

IMPROVEMENTS NOT SHOWN

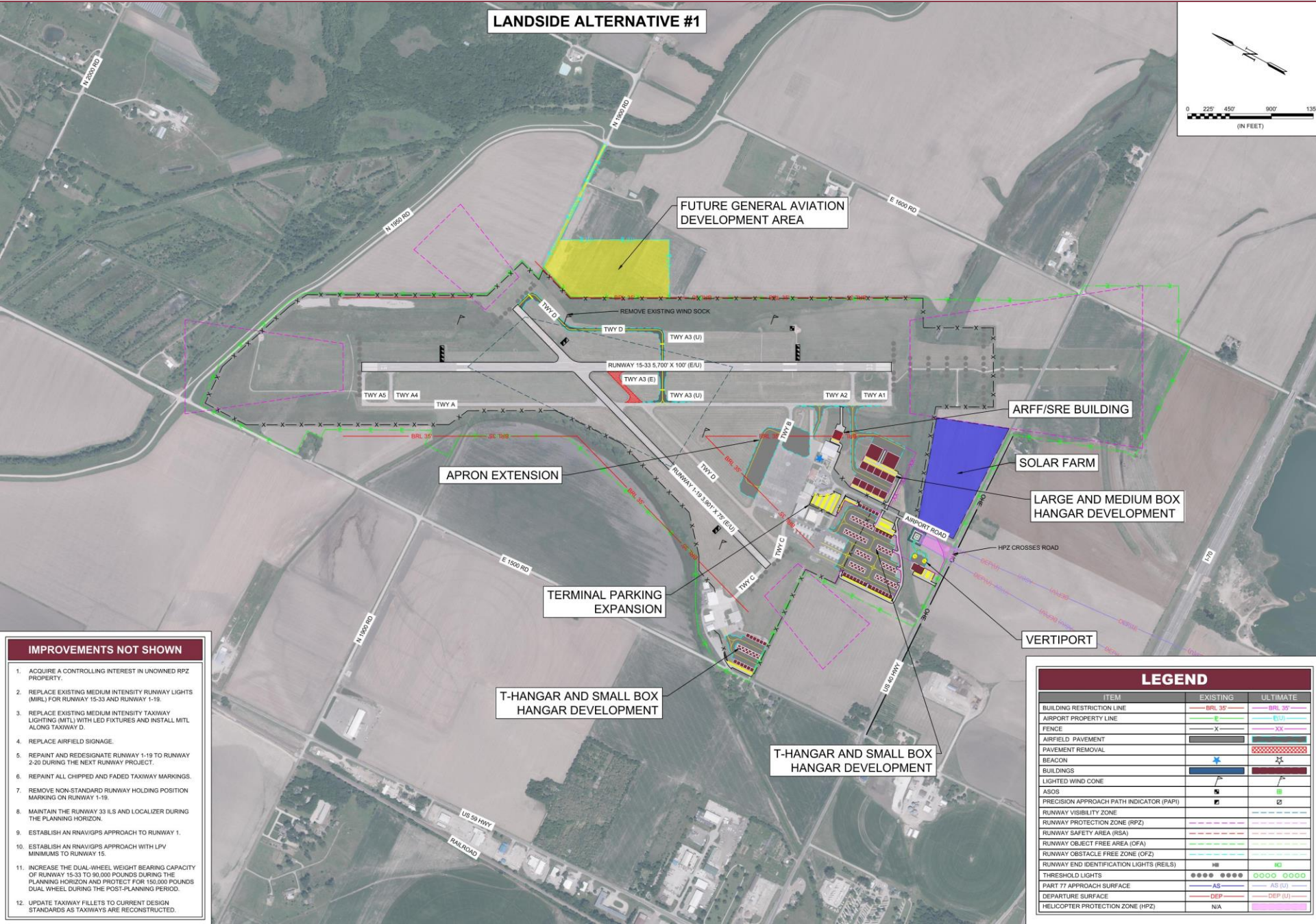
1. ACQUIRE A CONTROLLING INTEREST IN UNOWNED RPZ PROPERTY.
2. REPLACE EXISTING MEDIUM INTENSITY RUNWAY LIGHTS (MIRL) FOR RUNWAY 15-33 AND RUNWAY 1-19.
3. REPLACE EXISTING MEDIUM INTENSITY TAXIWAY LIGHTING (MTL) WITH LED FIXTURES AND INSTALL MTL ALONG TAXIWAY C.
4. REPLACE AIRFIELD SIGNAGE.
5. REPAINT AND REDESIGNATE RUNWAY 1-19 TO RUNWAY 2-20 DURING THE NEXT RUNWAY PROJECT.
6. REPAINT ALL CHIPPED AND FADED TAXIWAY MARKINGS.
7. REMOVE NON-STANDARD RUNWAY HOLDING POSITION MARKING ON RUNWAY 1-19.
8. MAINTAIN THE RUNWAY 33 SLS AND LOCALIZER DURING THE PLANNING HORIZON.
9. ESTABLISH AN RNAV/GPS APPROACH TO RUNWAY 1.
10. ESTABLISH AN RNAV/GPS APPROACH WITH LPV MINIMUMS TO RUNWAY 15.
11. INCREASE THE DUAL-WHEEL WEIGHT BEARING CAPACITY OF RUNWAY 15-33 TO 90,000 POUNDS DURING THE PLANNING HORIZON AND PROTECT FOR 150,000 POUNDS DUAL WHEEL DURING THE POST-PLANNING PERIOD.
12. UPDATE TAXIWAY FILLETS TO CURRENT DESIGN STANDARDS AS TAXIWAYS ARE RECONSTRUCTED.

LEGEND

ITEM	EXISTING	ULTIMATE
BUILDING RESTRICTION LINE	BRL 15	BRL 35
AIRPORT PROPERTY LINE	E	XX
FENCE	X	XX
AIRFIELD PAVEMENT		
PAVEMENT REMOVAL		
BEACON	★	★
BUILDINGS		
LIGHTED WIND CONE		
ASOS		
PRECISION APPROACH PATH INDICATOR (PAPI)		
RUNWAY VISIBILITY ZONE		
RUNWAY PROTECTION ZONE (RPZ)		
RUNWAY SAFETY AREA (RSA)		
RUNWAY OBJECT FREE AREA (OFA)		
RUNWAY OBSTACLE FREE ZONE (OPZ)		
RUNWAY END IDENTIFICATION LIGHTS (REILS)		
THRESHOLD LIGHTS		

Landside Alternatives

Lawrence Regional Airport



LANDSIDE ALTERNATIVE #1

FUTURE GENERAL AVIATION
DEVELOPMENT AREA

ARFF/SRE BUILDING

SOLAR FARM

LARGE AND MEDIUM BOX
HANGAR DEVELOPMENT

VERTIPORT

APRON EXTENSION

TERMINAL PARKING
EXPANSION

T-HANGAR AND SMALL BOX
HANGAR DEVELOPMENT

T-HANGAR AND SMALL BOX
HANGAR DEVELOPMENT

IMPROVEMENTS NOT SHOWN

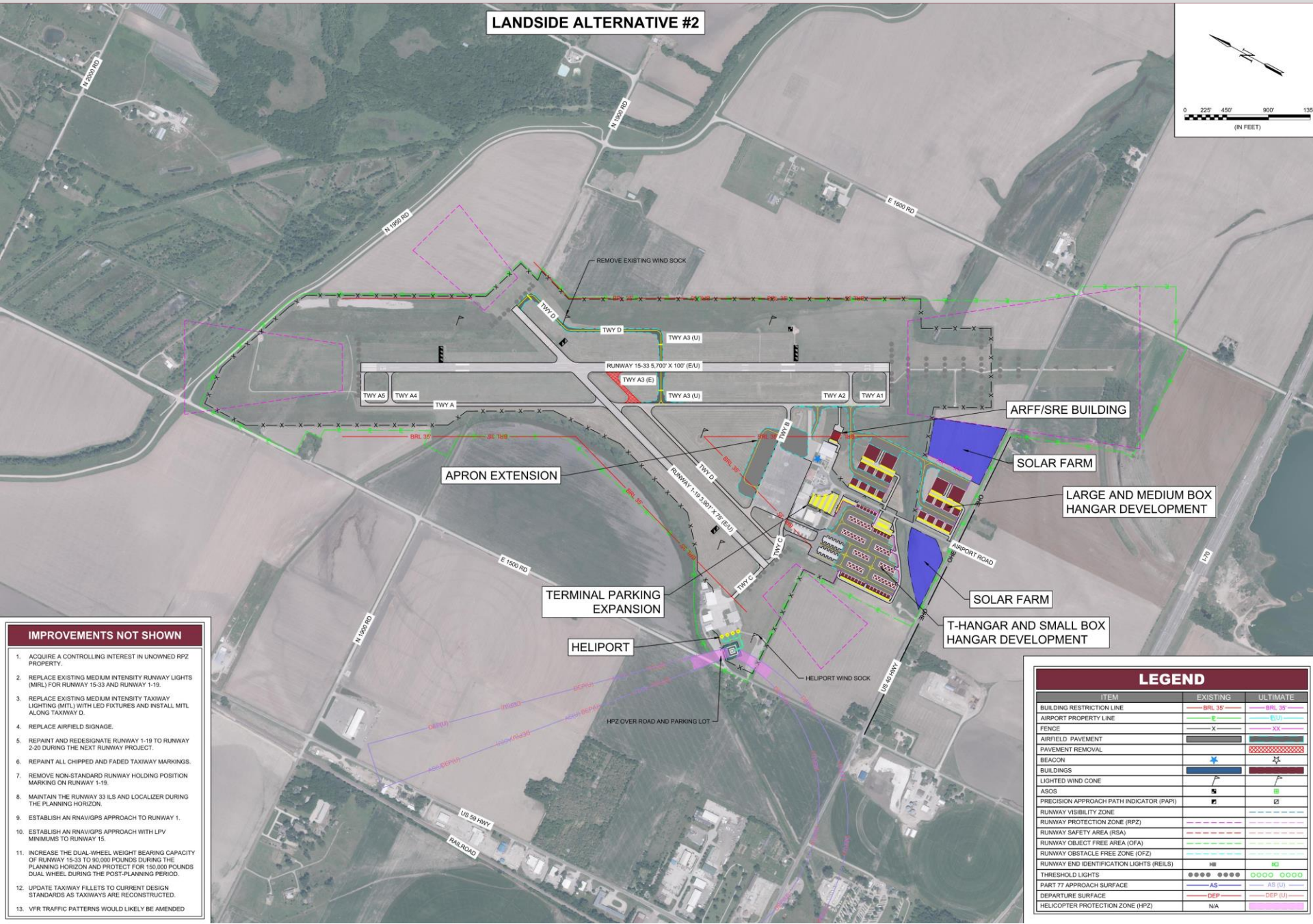
1. ACQUIRE A CONTROLLING INTEREST IN UNOWNED RPZ PROPERTY.
2. REPLACE EXISTING MEDIUM INTENSITY RUNWAY LIGHTS (MIRL) FOR RUNWAY 15-33 AND RUNWAY 1-19.
3. REPLACE EXISTING MEDIUM INTENSITY TAXIWAY LIGHTING (MTL) WITH LED FIXTURES AND INSTALL MTL ALONG TAXIWAY D.
4. REPLACE AIRFIELD SIGNAGE.
5. REPAINT AND REDESIGNATE RUNWAY 1-19 TO RUNWAY 2-20 DURING THE NEXT RUNWAY PROJECT.
6. REPAINT ALL CHIPPED AND FADED TAXIWAY MARKINGS.
7. REMOVE NON-STANDARD RUNWAY HOLDING POSITION MARKING ON RUNWAY 1-19.
8. MAINTAIN THE RUNWAY 33 ILS AND LOCALIZER DURING THE PLANNING HORIZON.
9. ESTABLISH AN RNAV/GPS APPROACH TO RUNWAY 1.
10. ESTABLISH AN RNAV/GPS APPROACH WITH LPV MINIMUMS TO RUNWAY 15.
11. INCREASE THE DUAL-WHEEL WEIGHT BEARING CAPACITY OF RUNWAY 15-33 TO 90,000 POUNDS DURING THE PLANNING HORIZON AND PROTECT FOR 150,000 POUNDS DUAL WHEEL DURING THE POST-PLANNING PERIOD.
12. UPDATE TAXIWAY FILLETS TO CURRENT DESIGN STANDARDS AS TAXIWAYS ARE RECONSTRUCTED.

LEGEND

ITEM	EXISTING	ULTIMATE
BUILDING RESTRICTION LINE	BRL 35'	BRL 35'
AIRPORT PROPERTY LINE	E	E
FENCE	X	XX
AIRFIELD PAVEMENT		
PAVEMENT REMOVAL		
BEACON	*	*
BUILDINGS		
LIGHTED WIND CONE		
ASOS		
PRECISION APPROACH PATH INDICATOR (PAPI)		
RUNWAY VISIBILITY ZONE		
RUNWAY PROTECTION ZONE (RPZ)		
RUNWAY SAFETY AREA (RSA)		
RUNWAY OBJECT FREE AREA (OFA)		
RUNWAY OBSTACLE FREE ZONE (OFZ)		
RUNWAY END IDENTIFICATION LIGHTS (REILS)	REILS	REILS
THRESHOLD LIGHTS	THRESHOLD LIGHTS	THRESHOLD LIGHTS
PART 77 APPROACH SURFACE	AS	AS (U)
DEPARTURE SURFACE	DEP	DEP (U)
HELICOPTER PROTECTION ZONE (HPZ)	N/A	

Lawrence Regional Airport

LANDSIDE ALTERNATIVE #2



IMPROVEMENTS NOT SHOWN

1. ACQUIRE A CONTROLLING INTEREST IN UNOWNED RPZ PROPERTY.
2. REPLACE EXISTING MEDIUM INTENSITY RUNWAY LIGHTS (MIRL) FOR RUNWAY 15-33 AND RUNWAY 1-19.
3. REPLACE EXISTING MEDIUM INTENSITY TAXIWAY LIGHTING (MTL) WITH LED FIXTURES AND INSTALL MTL ALONG TAXIWAY D.
4. REPLACE AIRFIELD SIGNAGE.
5. REPAINT AND REDESIGNATE RUNWAY 1-19 TO RUNWAY 2-20 DURING THE NEXT RUNWAY PROJECT.
6. REPAINT ALL CHIPPED AND FADED TAXIWAY MARKINGS.
7. REMOVE NON-STANDARD RUNWAY HOLDING POSITION MARKING ON RUNWAY 1-19.
8. MAINTAIN THE RUNWAY 33 ILS AND LOCALIZER DURING THE PLANNING HORIZON.
9. ESTABLISH AN RNAV/GPS APPROACH TO RUNWAY 1.
10. ESTABLISH AN RNAV/GPS APPROACH WITH LPV MINIMUMS TO RUNWAY 15.
11. INCREASE THE DUAL-WHEEL WEIGHT BEARING CAPACITY OF RUNWAY 15-33 TO 90,000 POUNDS DURING THE PLANNING HORIZON AND PROTECT FOR 150,000 POUNDS DUAL WHEEL DURING THE POST-PLANNING PERIOD.
12. UPDATE TAXIWAY FILLETS TO CURRENT DESIGN STANDARDS AS TAXIWAYS ARE RECONSTRUCTED.
13. VFR TRAFFIC PATTERNS WOULD LIKELY BE AMENDED

LEGEND

ITEM	EXISTING	ULTIMATE
BUILDING RESTRICTION LINE	BRL 35'	BRL 35'
AIRPORT PROPERTY LINE	E	E
FENCE	X	X
AIRFIELD PAVEMENT		
PAVEMENT REMOVAL		
BEACON		
BUILDINGS		
LIGHTED WIND CONE		
ASOS		
PRECISION APPROACH PATH INDICATOR (PAPI)		
RUNWAY VISIBILITY ZONE		
RUNWAY PROTECTION ZONE (RPZ)		
RUNWAY SAFETY AREA (RSA)		
RUNWAY OBJECT FREE AREA (OFA)		
RUNWAY OBSTACLE FREE ZONE (OFZ)		
RUNWAY END IDENTIFICATION LIGHTS (REILS)		
THRESHOLD LIGHTS		
PART 77 APPROACH SURFACE	AS	AS (U)
DEPARTURE SURFACE	DEP	DEP (U)
HELICOPTER PROTECTION ZONE (HPZ)	N/A	

Next Steps

- Public Open House
- Consolidate feedback into preferred layout
- Submit Draft Development Alternatives Section
- Airport Layout Plan / Phasing and Implementation Plan

Questions?



GARVER