



# Lawrence Bikes Plan Update

---

STEERING COMMITTEE MEETING #1

2-26-25



# Agenda

---

- Introductions
- Committee Structure & Expectations
- Project Overview
- Scope of Work
- Community Engagement Plan
- Wrap Up



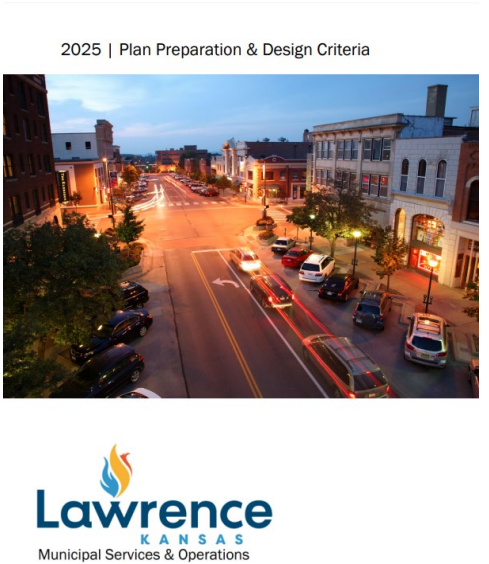
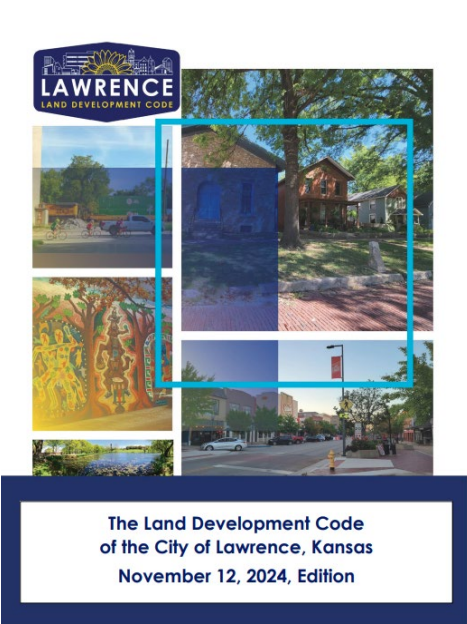
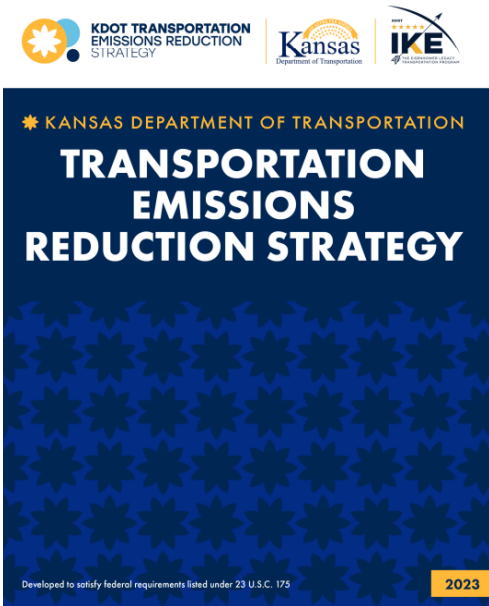
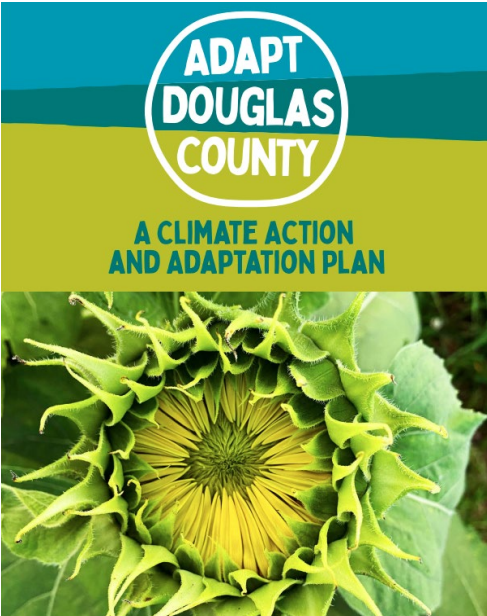
# Committee Structure & Expectations

---

Organization	Representative
Connected City Advisory Board	Jenny Trucano Muller
Parks, Recreation, Culture Advisory Board	John Nalbandian
Lawrence Association of Neighborhoods	Phil Collison
Lawrence Bicycle Club	Pat Collette
Lawrence Mountain Bike Club	Val Bontrager
Friends of Lawrence Area Trails	Jared Gab
Safe Routes To School Champion	Aftan Jameson
KU Faculty, Staff, or Student	Margretta deVries
Haskell Faculty, Staff, or Student	Angel Elizarraras
Lawrence Coalition 4 Safe Streets	Samuel Carter

- Respect and listen to each other
- Provide guidance and direction to staff
- Bring insight and perspective to the planning process

Existing Plans and Policies



# Progress Since 2019

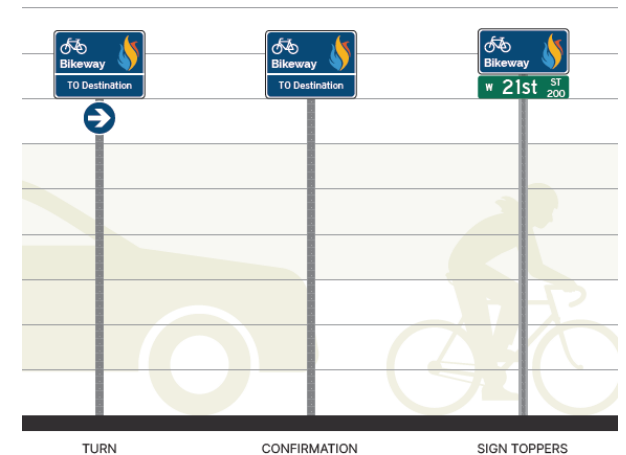
---

- Safe Routes to School
- Bike Share
- Wayfinding
- Vision Zero

[Existing Conditions Report](#)



Transportation Safety Action Plan



# Expected Timeline

- Steering Committee to meet 5 times.
- Surveys, Open Houses, and Tabling to occur throughout planning process.
- Final Approval by MPO Policy Board and Lawrence City Commission

**Bikes Plan Update Timeline**

2025	Q1	Q2	Q3	Q4
Steering Committee	X	X	X	X X
Existing Conditions Review				
Community Engagement				
Focus Groups				
Analysis, Research, and Plan Drafts				
Draft Plan Review				
Final Approval				

# Scope of Work

---

The Lawrence Bikes Plan serves as a guide for the City of Lawrence to achieve safe, comfortable, and accessible cycling in our community. Updating this Plan will provide an opportunity to better understand community experiences and expectations surrounding bicycle infrastructure and policies.

The [Bike Plan Update Scope](#) outlined the anticipated work tasks.

# Expected Work Tasks

---

- Review of planned bikeway network, with particular attention to sections identified to complete the Lawrence Loop.
- Review of Priority and Secondary Funding networks.
- Identify Bicycle Parking needs for city owned properties.
- Consider the need to address emerging forms of mobility such as pedal-assist electric bicycles, motorized scooters, and skateboards (among other individual mobility modes). These are referred to as Bikes Plus or Bikes+.
- Confirm level of comfort expectations for low stress bikeway design with the community and national best practices.
- Invitation to KU to include and update the KU Bikes Plan (2016).
- Coordination with other City of Lawrence plans & policies.

# Community Engagement

---

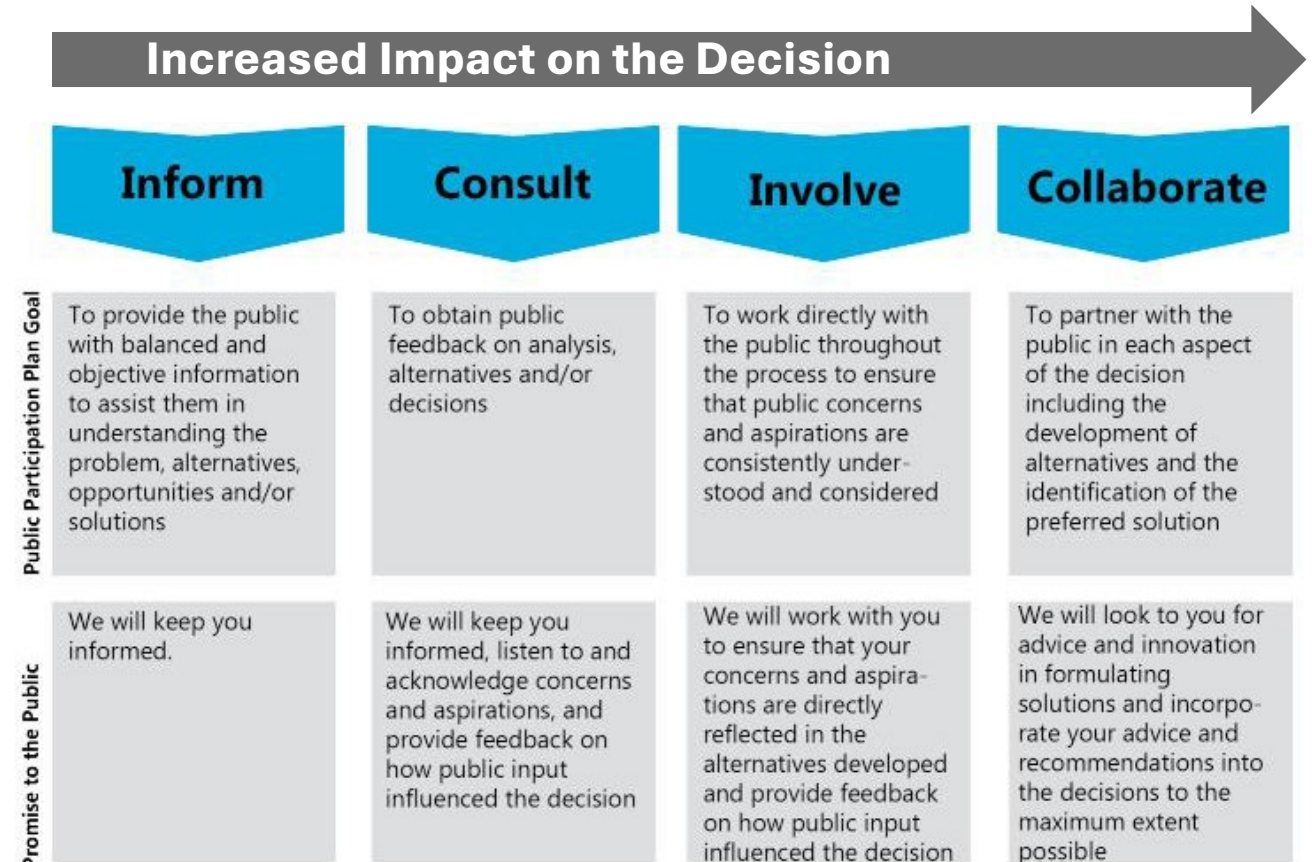
The goals of the Lawrence Bikes Plan reflect the priorities expressed by stakeholders and the community throughout engagement for the Plan.

Discussions with staff and local leaders, national best practices, and input from community members will shape the proposed strategies and policies intended to help the City achieve these goals.



# Community Engagement Tools

- Steering Committee
- Open Houses
- Surveys
- Focus Groups
- Tabling



# Next Steps

---

- Community Engagement public survey opening after spring break (last week in March)
- Open House in the spring
- Staff team will convene
- Steering Committee Meeting No. 2: May