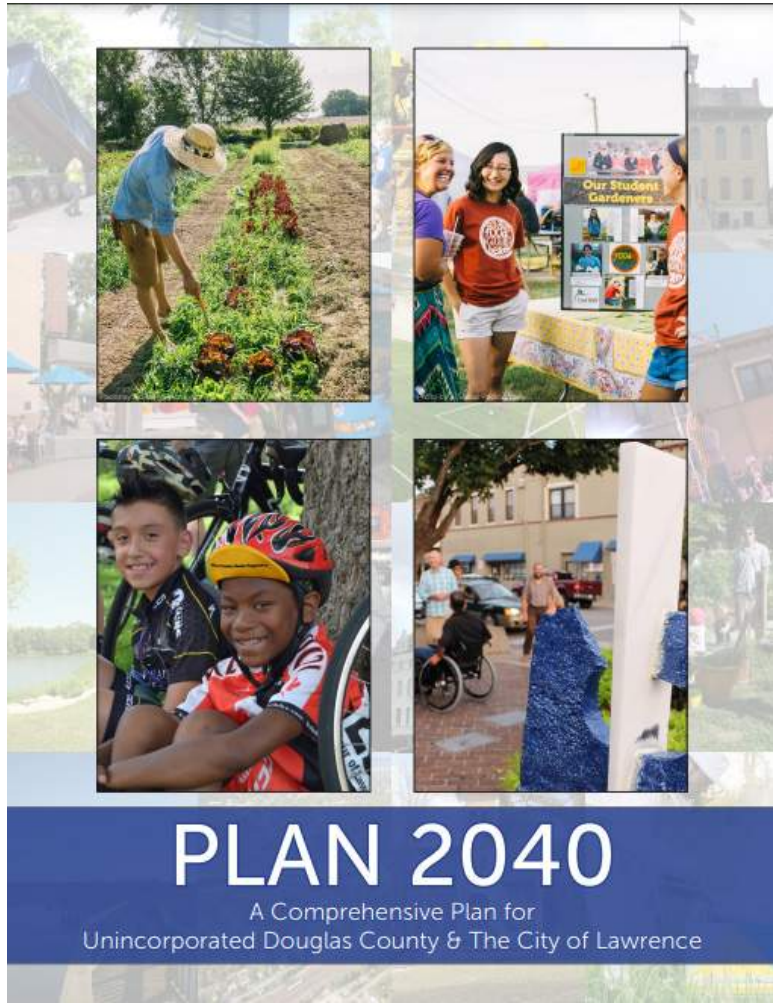


# BOB BILLINGS PARKWAY

## CITY OF LAWRENCE

### PROJECT ALIGNMENT WITH ADOPTED PLANS

# City of Lawrence Adopted Plans



### Lawrence Comprehensive Plan

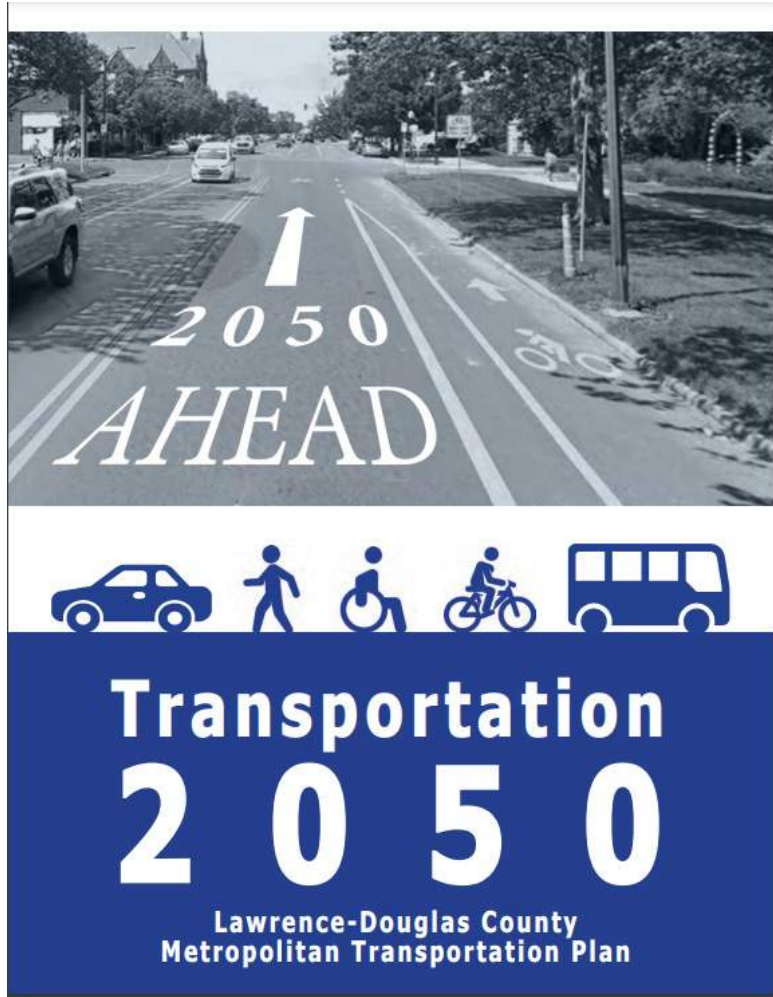
The Comprehensive Plan provides a vision and expresses a community’s desires about the future. It provides the foundation and framework for making future physical development and policy decisions. It is used as a policy guide that identifies the community’s goals for directing future land use decisions.

The plan also provides guidance on likely locations of population growth to prioritize transportation projects while also helping maintain the vision and standards for our City of Lawrence communities. The plan helps to ensure that, as our community grows, we meet and exceed the expectations set by the citizens of the City of Lawrence and surrounding region.

### Lawrence Strategic Plan

A Strategic Plan outlines a systematic process for moving toward a vision in a manner that involves the development and prioritization of strategic goals along with measurable strategies.

The Connected City outcome of the Strategic Plan states the following, “The City of Lawrence has well-maintained, functional, and efficient infrastructure, facilities, and other assets. **Connectivity supports accessible, sustainable methods for safely moving people** and information throughout the community and the region. Investment in these assets reflects the City’s commitment to contribute to the well-being of all people.”



### Transportation 2050 Plan

Transportation 2050 (T2050) is the blueprint for our future transportation system; it is a vision for a healthy, safe, and efficient transportation system which adequately serves the metropolitan region. The plan identifies future transportation needs, investments, and improvement strategies for all forms of transportation (automobile, public transit, bicycle, pedestrian, etc.) necessary to meet the transportation needs of the region through 2050.

Utilizing responses from the public to provide guidance on what is important to City of Lawrence citizens, this plan identifies multimodal projects and strategies that include prioritizing pedestrian and cycling accessibility and safety as well as roadway conditions and traffic congestion. The plan also ensures that roadway projects consider the future growth projects for the project corridor as well as the City of Lawrence as a whole.



# BOB BILLINGS PARKWAY

## EXISTING CONDITIONS

INTERSECTION OF E800 AND N1500/BOB BILLINGS PKWY STEEP GRADES HEADS EAST-TO-WEST AND NORTH-TO-SOUTH.



TWO DIRT/GRAVEL DRIVING LANES WITH GRASS DITCHES ON EITHER SIDE OF THE ROAD, LOOKING WEST.



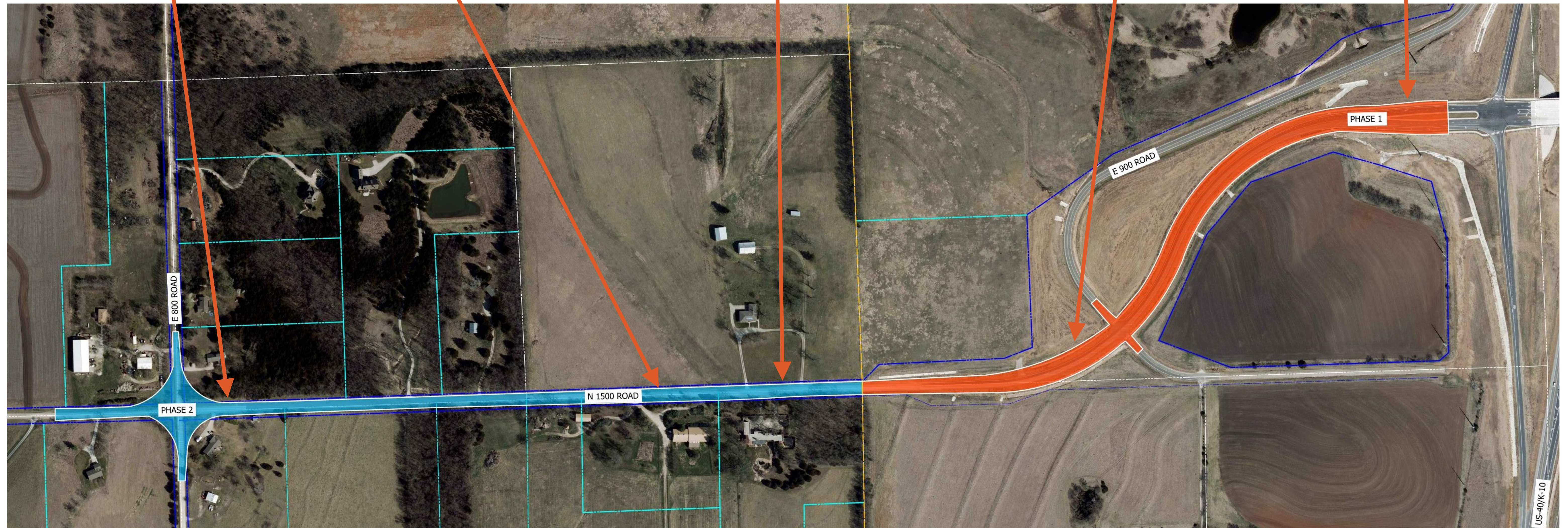
TWO DIRT/GRAVEL DRIVING LANES WITH GRASS DITCHES ON EITHER SIDE OF THE ROAD, LOOKING EAST.



TWO PAVED DRIVING LANES WITH SIDEWALKS ON EITHER SIDE OF THE ROAD, LOOKING WEST.



FOUR PAVED DRIVING LANES WITH GRASS MEDIAN. LOOKING EAST.





# BOB BILLINGS PARKWAY

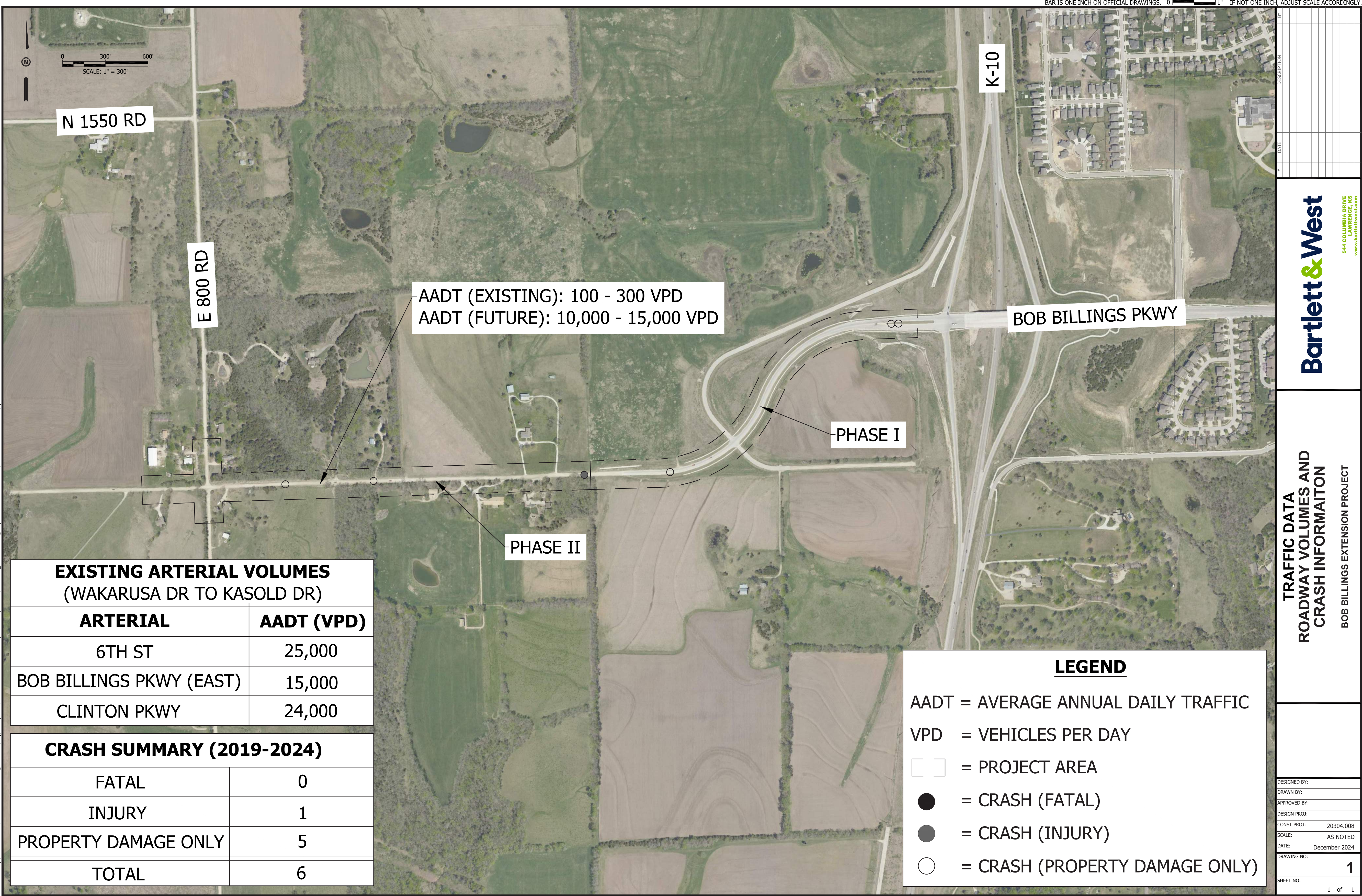
## SOUTH LAWRENCE TRAFFICWAY EXPANSION PLANS





# BOB BILLINGS PARKWAY TRAFFIC VOLUMES

## K10 TO E 800 RD





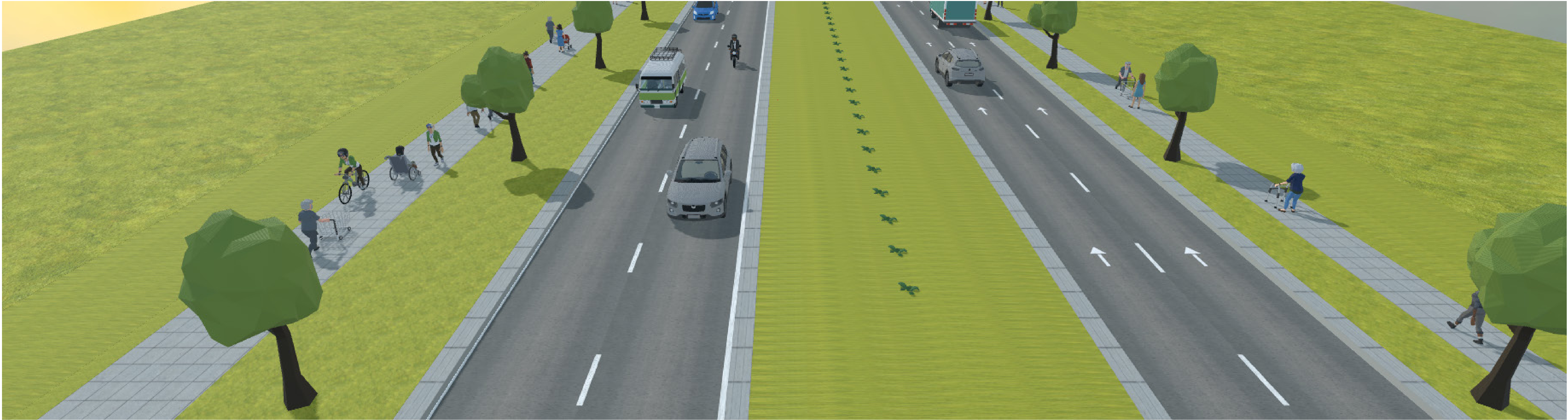
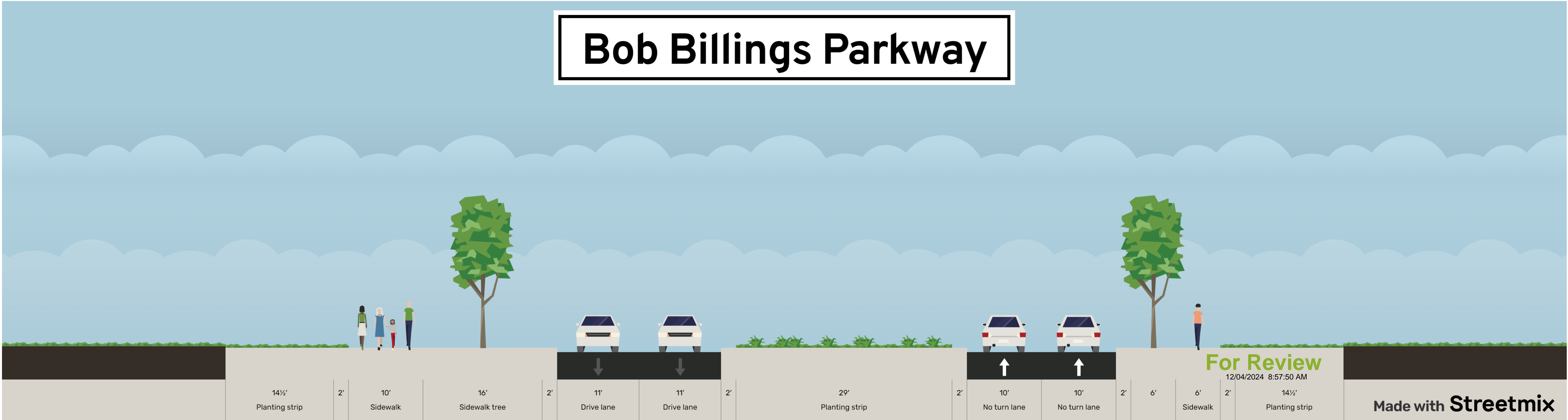
# BOB BILLINGS PARKWAY PROJECT SEQUENCING

**TWO PHASES: Phase 1 (K10 to the Half-Section Line) and West Phase 2 (Half-Section Line to E 800 Rd)**





Bob Billings Parkway





[illegible]