



TRANSPORTATION COMMISSION STUDY SESSION
Monday, September 9, 2019 5:00 PM
City Commission Room, City Hall, 6 E. 6th Street

- Transportation/Land-Use Relationship

TRANSPORTATION COMMISSION REGULAR MEETING
Monday, September 9, 2019 6:00 PM
City Commission Room, City Hall, 6 E. 6th Street

1. Approve Regular Meeting minutes for August 5, 2019

2. General Public Comment

The public is allowed to speak to any items or issues that are not scheduled on the regular agenda. Public comment will not be received for Staff Items, Commission Items, or Calendar. Each person or organization will be limited to three (3) minutes. As a general practice, the Commission will not discuss/debate these items, nor will the Commission make decisions on items presented at this time. Individuals are asked to come to the microphone, sign in, and state their name and address. Speakers should address all comments to the Commission.

3. E. 23rd Street Corridor Study

<https://assets.lawrenceks.org/mpo/23Study/DraftPlan.pdf>

The 23rd Street Corridor Study developed a vision and implementation strategy for 23rd Street. The planning process provided an opportunity for the public to reimagine the street. This plan lays the foundation for the design of 23rd Street from the Haskell Bridge to 600 feet east of Anderson Ave. when it is reconstructed in 2021-22.

Action: Receive presentation and provide feedback on the E. 23rd Street planning study.

4. K-10/27th St./Wakarusa Dr. Interim Safety Improvements

KDOT is studying improvements at both the K-10/27th Street and Wakarusa Drive/27th Street intersections to improve traffic flow and safety.

Action: Receive presentation from KDOT regarding low/medium cost improvements and provide feedback on design options.

5. Non-Motorized Project Prioritization

Action: Approve Non-motorized Project Prioritization Policy TC19-001 and recall Non-motorized Projects Prioritization Policy TC18-001.



6. Lawrence Multi-Modal Transportation Commission

Action: Provide recommendation to the City Commission to approve Ordinance establishing the Lawrence Multi-Modal Transportation Commission.

Provide recommendation to the City Commission to approve Bylaws of the Lawrence Multi-Modal Transportation Commission

7. Staff Items

- 2021 KDOT Transportation Alternatives Program

8. Commission Items

- Update from Commissioner Kuzmyak on PTAC
- Micromobility Subcommittee Update

9. Calendar

- **Next Meeting October 7, 2019**
- 5p Study Session: Update on sidewalk maintenance program
- 6p Regular Meeting:
 - Kasold – 22nd St to Clinton Parkway
 - E. 19th St – Haskell to O'Connell design options

10. Adjournment



City of Lawrence
Douglas County
PLANNING & DEVELOPMENT SERVICES



Transportation-Land Use Relationship

*September 9, 2019
Transportation Commission*





Land Use & Transportation



- Equal & Direct Influences
- Indirect Influences
- Coordinated Implementation
- Community Improvements

HORIZON 2020

The Comprehensive Plan
for Lawrence and
Unincorporated Douglas County

ADDITIONAL
CITY OF LAWRENCE

This report was prepared by the City of Lawrence and Douglas County. It is the property of the City of Lawrence and Douglas County. It is not to be used for any other purpose without the written consent of the City of Lawrence and Douglas County. It is not to be used for any other purpose without the written consent of the City of Lawrence and Douglas County. It is not to be used for any other purpose without the written consent of the City of Lawrence and Douglas County.

Transportation





HORIZON 2020

The Comprehensive Plan
for Lawrence and
Unincorporated Douglas County

$$\frac{d}{dt} \left(\frac{\partial L}{\partial \dot{x}} \right) = \frac{\partial L}{\partial x}$$

Reprinted by permission of the University of Michigan Press, Inc. "The World as
not Translatable," in *The Philosophy of Language*, ed. by
J. R. Searle, pp. 111-126. Copyright © 1975.
Reprinted by the University of Chicago Press, 1977.
© 1975 University of Chicago Press. All rights reserved.

Transportation



SUBDIVISION REGULATIONS
for
Lawrence
and
the Unincorporated Areas
of **Douglas County, KS**

nd Divisions
ce and
Douglas County,

Development Code
as County Code

25/08; 09/10/08;
January 10, 2012

January 13, 2012



City of Lawrence
PLANNING & DEVELOPMENT SERVICES

Land Development Code
Chapter 20 – Code of the City of Lawrence, Kansas

Effective July 1, 2006
Adopted by the Lawrence City Commission on April 4, 2006 [Ordinance No. 7980]
Ordinance No. 8013, 8014, 8015, 8016, 8017, 8018 and 8019 adopted June 27, 2006



Horizon 2020



- Overall Community Vision
- Guide for Future Decisions
- Evaluate Land Use Proposals
- Community Interest

HORIZON 2020

The Comprehensive Plan
for Lawrence and
Unincorporated Douglas County

8/18/2019
Amendment

Plan prepared by the Lawrence/Douglas County Metropolitan Planning Office based upon recommendations from the HORIZON 2020 Steering Committee.
Adopted by the Planning Commission on May 22, 1996.
Adopted by the City Commission January 26, 1997.
Douglas County Board of County Commissioners May 18, 1998.



Chapter 8: Transportation



- *Transportation 2040*

- Options & Choices
- Linkage to Land Use
- Safety & Security
- Efficient & Equitable

Transportation





Planning Hierarchy

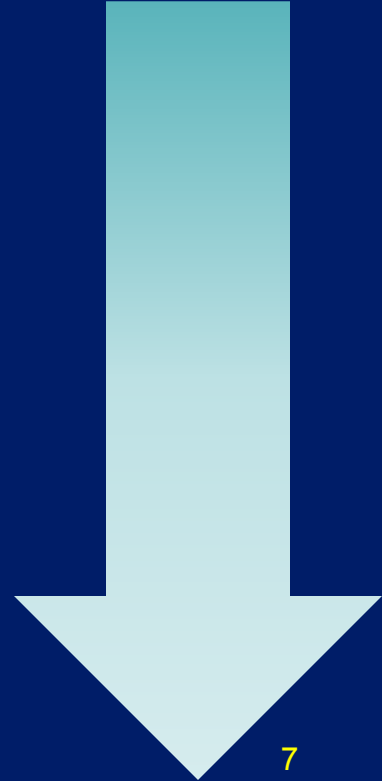


Comprehensive Plan

Land Development Code

Subdivision Regulations

Development Applications





Land Development Code



- Article 6: Density & Dimensional Standards
- Article 9: Parking, Loading, and Access
- **Article 8: Subdivision Regulations**
- Article 10: Landscaping & Screening
- **Article 13: Development Review Procedures**



Subdivision Regulations





Development Applications



- **Site Plan**
 - 3 Levels (*Minor, Standard, Major*)
- Special Use Permits
- Institutional Development Plans
- Planned Developments
- Zoning Applications
- Variance / Appeals



Questions?



Jeff Crick, AICP

- Lawrence / Douglas Co. Planning Department
- jcrick@lawrenceks.org



City of Lawrence
Transportation Commission
August 5, 2019 Minutes

MEMBERS PRESENT: Charlie Bryan, Steve Evans, Donna Hultine, Ron May, John Ziegelmeyer, Carol Bowen, Nick Kuzmyak, Erin Paden

MEMBERS ABSENT: Ron May, Kathryn Schartz

STAFF PRESENT: Charles Soules, MSO Department
Jessica Mortinger, Planning Department (SS)
Ashley Myers, Planning Department
Dustin Smith, MSO Department (SS)
Jacob Baldwin, MSO Department

A complete video recording of the meeting is available on the City's website at <https://lawrenceks.org/boards/transportation-commission/>

STUDY SESSION

- Receive information on regulations for electric and motorized vehicles
- Receive request from VeoRide to amend bike share contract to include e-scooters

REGULAR MEETING

[The meeting was called to order by Commissioner Evans at 6:18 p.m. in the City Commission Room, City Hall, 6 E. 6th Street.](#)

ITEM NO. 1:

Approve Regular Meeting minutes for July 1, 2019

Moved by Commissioner Bryan to approve the minutes, seconded by Commissioner Ziegelmeyer. Motion passed 7-0.

ITEM NO. 2:

General Public Comment

Public Discussion: N/A

ITEM NO. 3:

Lawrence Bikes Plan

Moved by Commission Bryan to recommend approval of the Lawrence Bikes Plan, seconded by Commissioner Ziegelmeier. Motion passed 7-0.

Public Comments: Michael Almon

ITEM NO. 4:

Non-Motorized Project Prioritization

Transportation Commission asked staff to return in September with project scores using the proposed Non-Motorized Project Prioritization Policy.

Public Comments: Tresa Hill, Michael Almon

ITEM NO. 5:

Staff Items

- Update on 2019 Pedestrian Bicycle Funding Allocation

ITEM NO. 6:

Commission Items

- Moved by Commission Ziegelmeier to form a subcommittee to provide recommendations/policy on a Pilot Program for plug-in electric vehicles, seconded by Commissioner Paden. Motion passed 7-0.
- Jasmine Moore, Sustainability Coordinator, will be invited to attend a future study session to discuss the Commissions role in sustainability efforts.

ITEM NO. 7:

Calendar

- **Next Meeting September 9, 2019**
- 5p Study Session:
 - Transportation/Land-Use Relationship
- 6p Regular Meeting:
 - E. 23rd Street Planning Study

ITEM NO. 8:

Adjournment

Meeting was adjourned at 8:10 pm.

Transportation Commission Study Session August 5, 2019

Name	Initials
Members	
Charlie Bryan	
Lawrence DGCO Health Dept. Representative	CWB
Donna Hultine	
University of Kansas	dh
Kathryn Schartz	
Multi-Modal Transportation / Planning Eng Rep	
Nick Kuzmyak	
PTAC representative	NSK
Carol Bowen	
Pedestrian Representative	CB
Steve Evans	SE
Planning/Engineering Field Representative	
Erin Paden	
Bicyclist Representative	EP
John Ziegelmeyer	
Local Business Representative	JZ
Ron May	
USD-497	
City Staff	
David Cronin	
City Engineer	—
Jessica Mortinger	
Senior Transportation Planner	JM
Ashley Myers	
Transportation Planner	AM
Charles Soules	
Assistant Director, MSO	CES
Dustin Smith	
Sr. Project Engineer	DS
Jacob Baldwin	
Sr. Project Engineer	JB

Transportation Commission Meeting **August 5, 2019** **Public Sign In Sheet**

[illegible]



City of Lawrence

LAWRENCE - DOUGLAS COUNTY

MPO

METROPOLITAN PLANNING ORGANIZATION

DRAFT

CITY OF LAWRENCE EAST 23RD STREET MULTIMODAL CORRIDOR PLAN

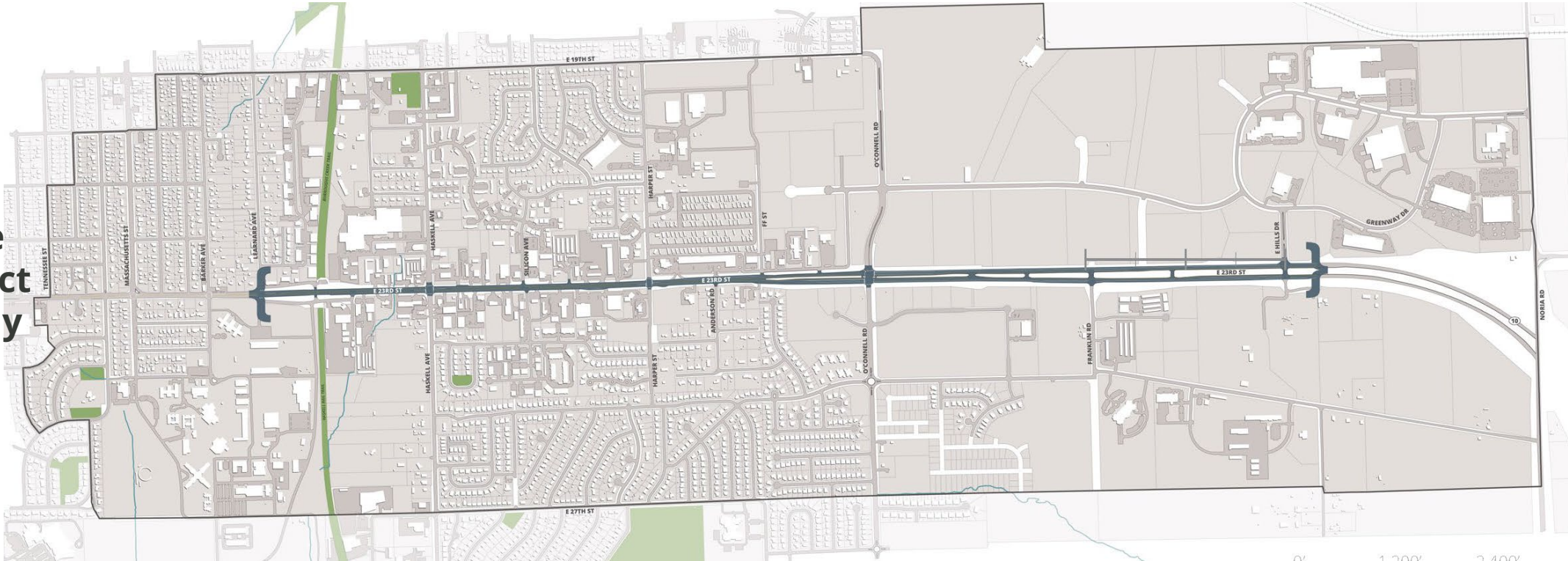
olsson

September 2019



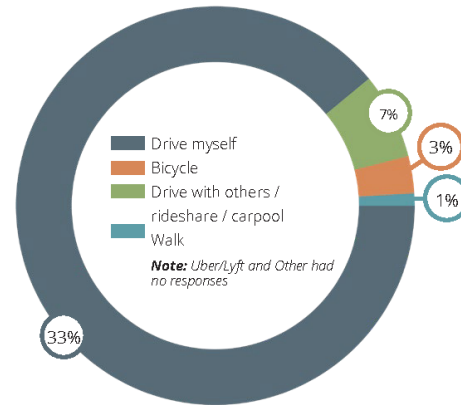
CORRIDOR STUDY AREA

The corridor study area is two-fold, made up of the project limits and study area.

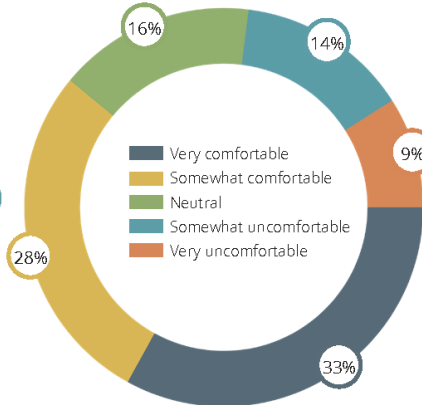


PUBLIC ENGAGEMENT *(Online Public Survey)*

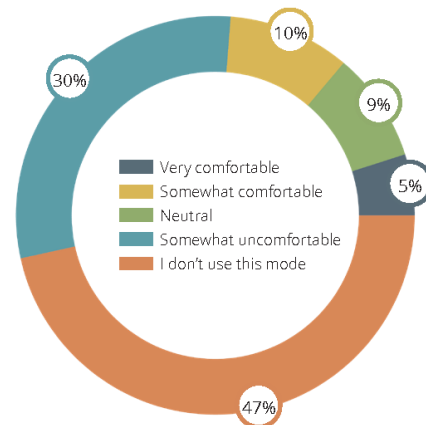
- Press release
- Social media
- Project web page
- Mailers
- Online Survey



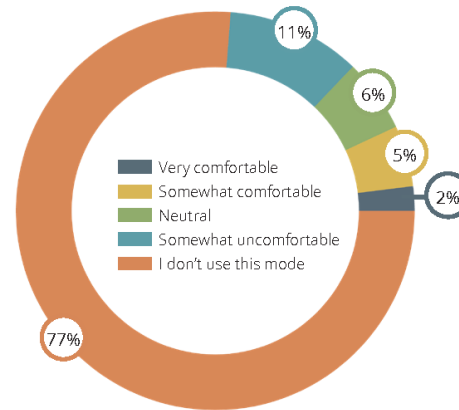
What is the primary method you use to travel along East 23rd Street?



How comfortable do you feel **driving** along East 23rd Street?






How comfortable do you feel **walking** along East 23rd Street?






How comfortable do you feel **bicycling** along East 23rd Street?

TOP 3 PRIORITIES

-  Improve traffic flow
-  Improve safety for pedestrians, bicyclists, and vehicles
-  Improve the landscaping and visual interests

TOP 3 IMPROVEMENTS

-  Buffers between sidewalk and roadway
-  Landscaping and street trees
-  Improved and updated lighting

SELECTED COMMENTS

- "I took my kids on a bike ride down 23rd Street... and I will never do it again until safety for pedestrians and cyclists is improved with a buffer between the sidewalk and road."
- "Better sidewalks. Better lighting. A safe way to cross 23rd street!"
- "Needs to be integrated better into city-wide bike network, particularly given strategic value of connection to Burroughs Creek Trail."
- "Enforced speed limit."
- "Higher speed limit past O'Connell Road like it used to be."
- "Again, leave it be."
- "Simply fixing the potholes in the road and business entrances is the most important thing."
- "Now that we have the K-10 bypass there is more flexibility to make something other than automobile-fixated commercial strip."
- "Improving 23rd street from K-10 to Iowa will be a magnet to draw people into Lawrence for shopping and dining."
- "There are many businesses in the area that are hard to get in and out of..."
- "Bus stops need their own lane instead of stopping in traffic, it feels dangerous and impatient drivers fly around."

PUBLIC ENGAGEMENT *(Charrette)*

- Attended by the public, Project Advisory Committee, and Steering Committee
- In-person activities and open house led to plan development and recommendations



Program Priorities

Existing Conditions

- Lower and enforce speed limit, starting at O'Connell Road
- Improve roadway condition/surface
- Address limited bicyclist and pedestrian access
- Address access at East 23rd Street and Haskell Avenue, right turn only from Quik Trip (only place for possible median)
- Avoid construction of medians

Access Management

- Too many access points
- Redirect truck traffic
- No median; need to keep entrances accessible from both directions
- Monitor access points during redevelopment; establish access management standard for eastern portion of corridor
- Maintain access through main part of gateway for trucks and vehicles, keeping out of neighborhoods
- Manage left turns out of businesses

Bicyclists and Pedestrians

- More connectivity for bicyclists
- Improve and build sidewalks for bicyclists and pedestrian on East 23rd Street, especially as the city grows west
- Want parallel connectivity; adjacent bicyclist/pedestrian facilities
- Need improved access on north/south cross streets for bicyclists and pedestrians
- Address driveway and crossings conflict points
- Address crosswalk safety; not enough crossing time

Transit Amenities

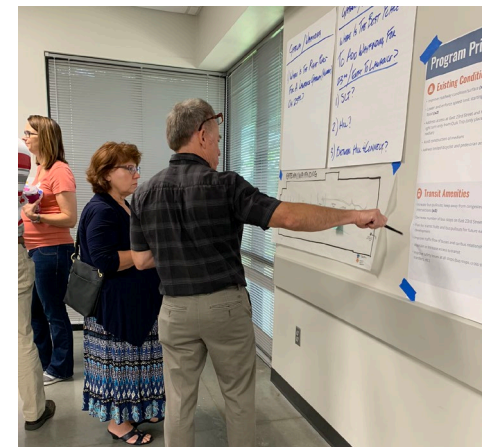
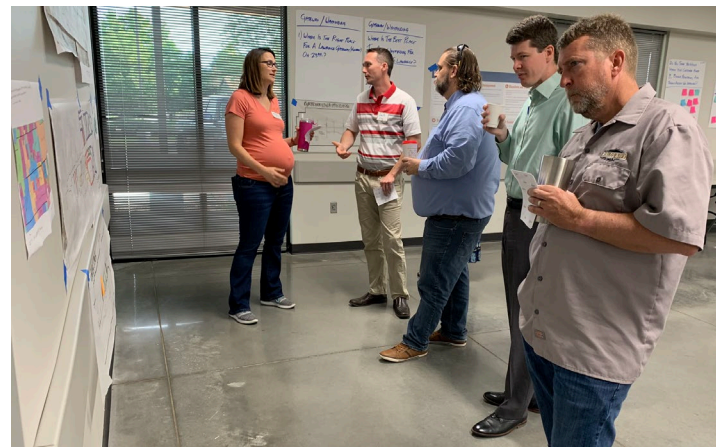
- Improve safety issues at all stops (bus stops, cross street transfers, etc.)
- Increase bus pullouts; keep away from congested intersections
- Plan for transit hubs and bus pullouts for future eastern development
- Maintain or increase access to transit
- Improve traffic flow of buses and car/bus relationships

Aesthetics

- Add gateway at O'Connell Road at northwest corner to welcome people to Lawrence
- Underground utilities
- Determine the best plan for landscaping along the corridor; make it pretty
- Ample, yet reasonable use of green space
- Create a themed corridor
- Add decorative lighting and stoplights (could be assisted by burying utilities)

Economic Development

- Do not limit access to businesses by adding medians
- Improve the sense that you have entered our community all along the corridor
- Appeal to more business and commercial resources along the corridor
- Better corridor signage off of K-10
- Increase ease of development; make process easier for beautification
- Maintain access and ease of use for freight and deliveries



TYPICAL SECTIONS

FIGURE 4.6: SECTION A (Learnard Avenue to Harper Street)

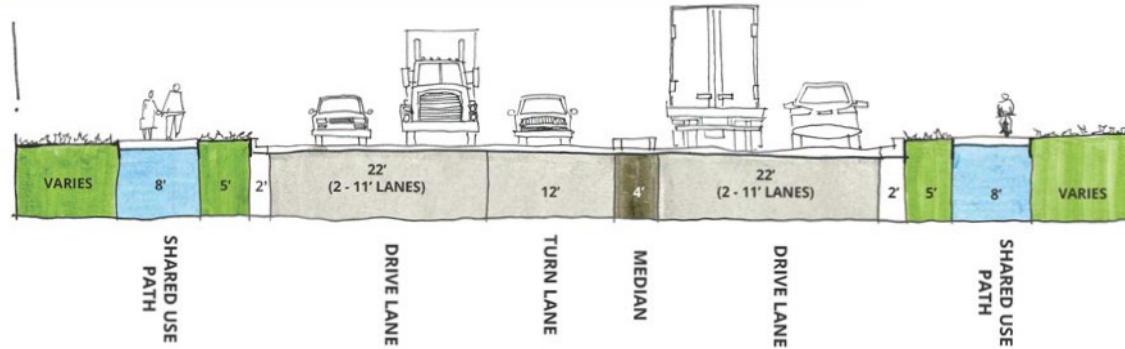


FIGURE 4.7: SECTION B (Learnard Avenue to Harper Street)

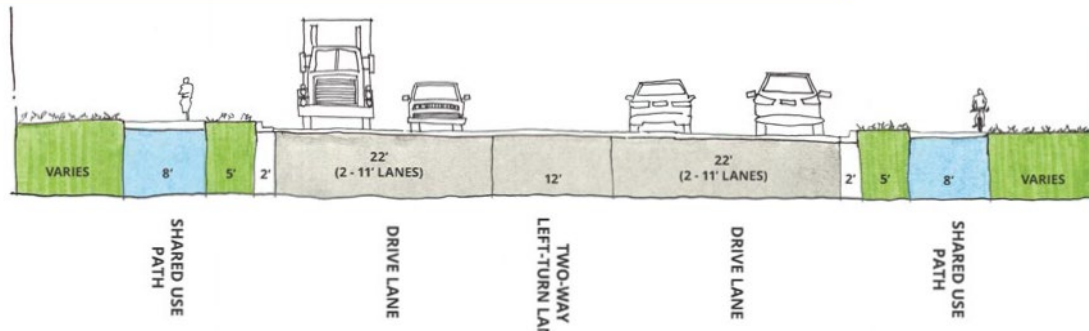


FIGURE 4.8: SECTION C (East of Harper Street)

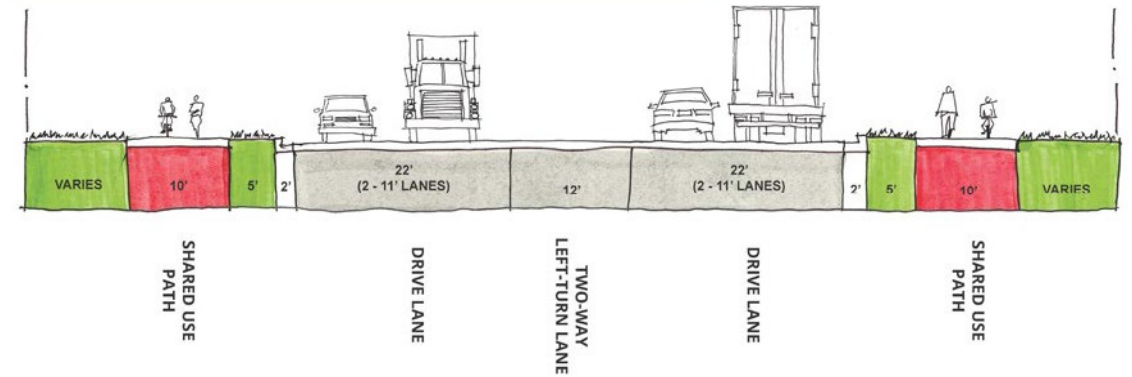
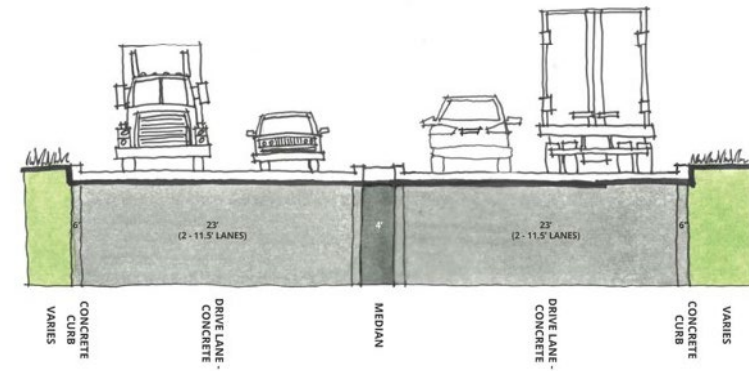
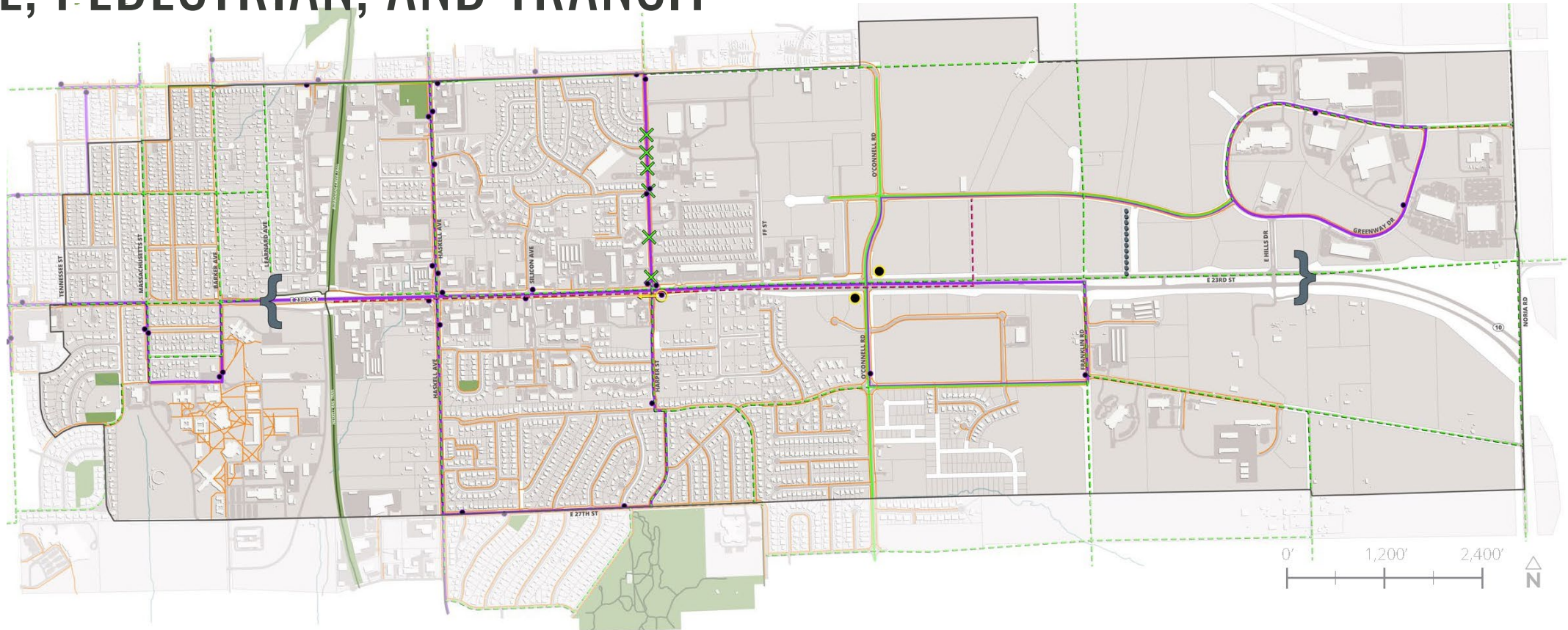


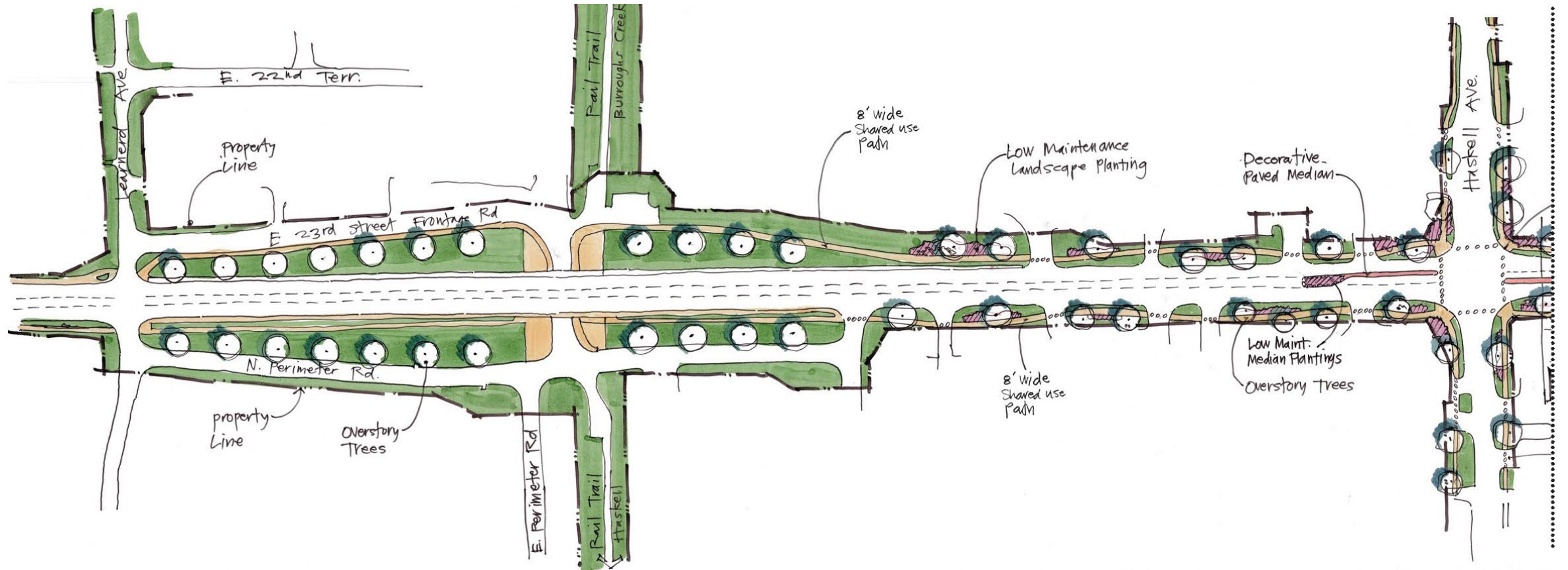
FIGURE 4.9: INTEGRAL CURB OPTION



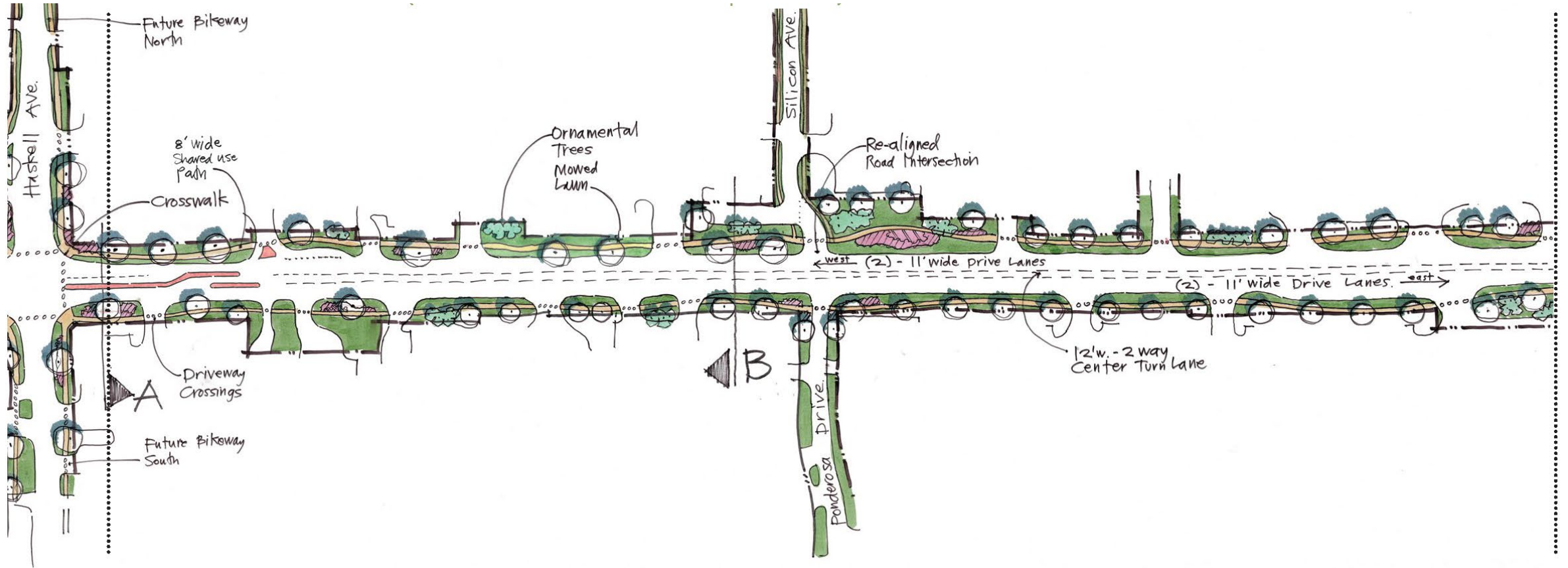
BICYCLE, PEDESTRIAN, AND TRANSIT



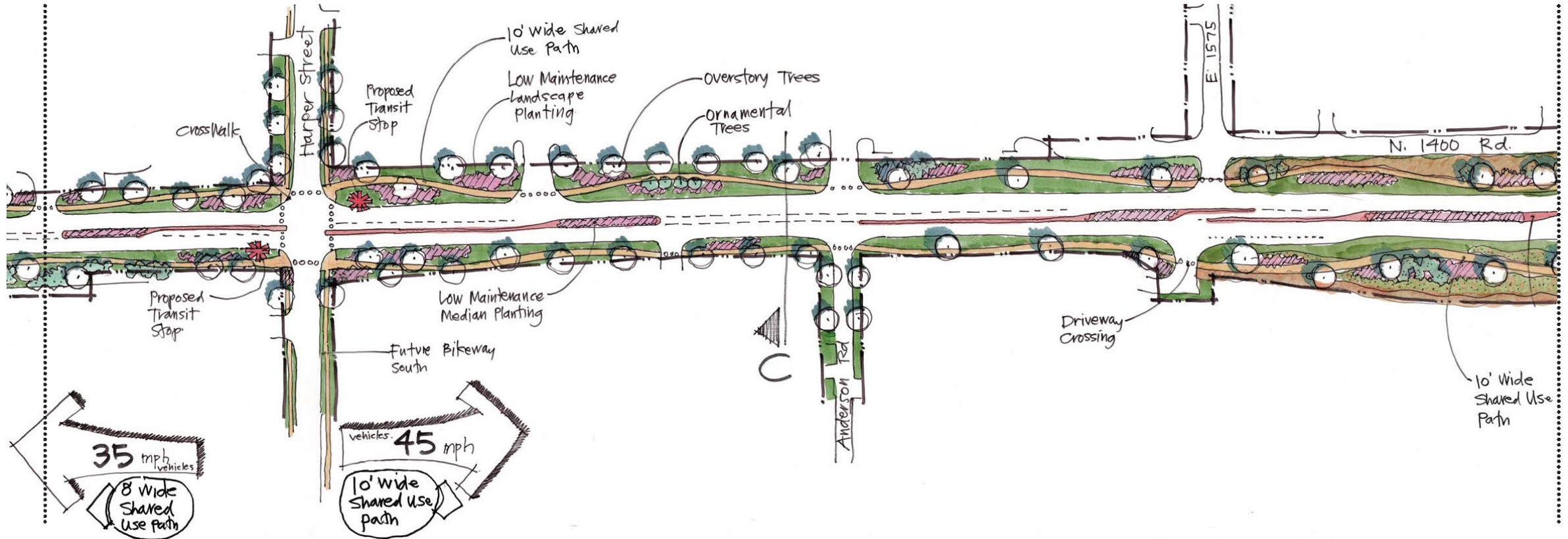
ILLUSTRATIVE CORRIDOR PLAN (*Learnard Ave. to Haskell Ave.*)



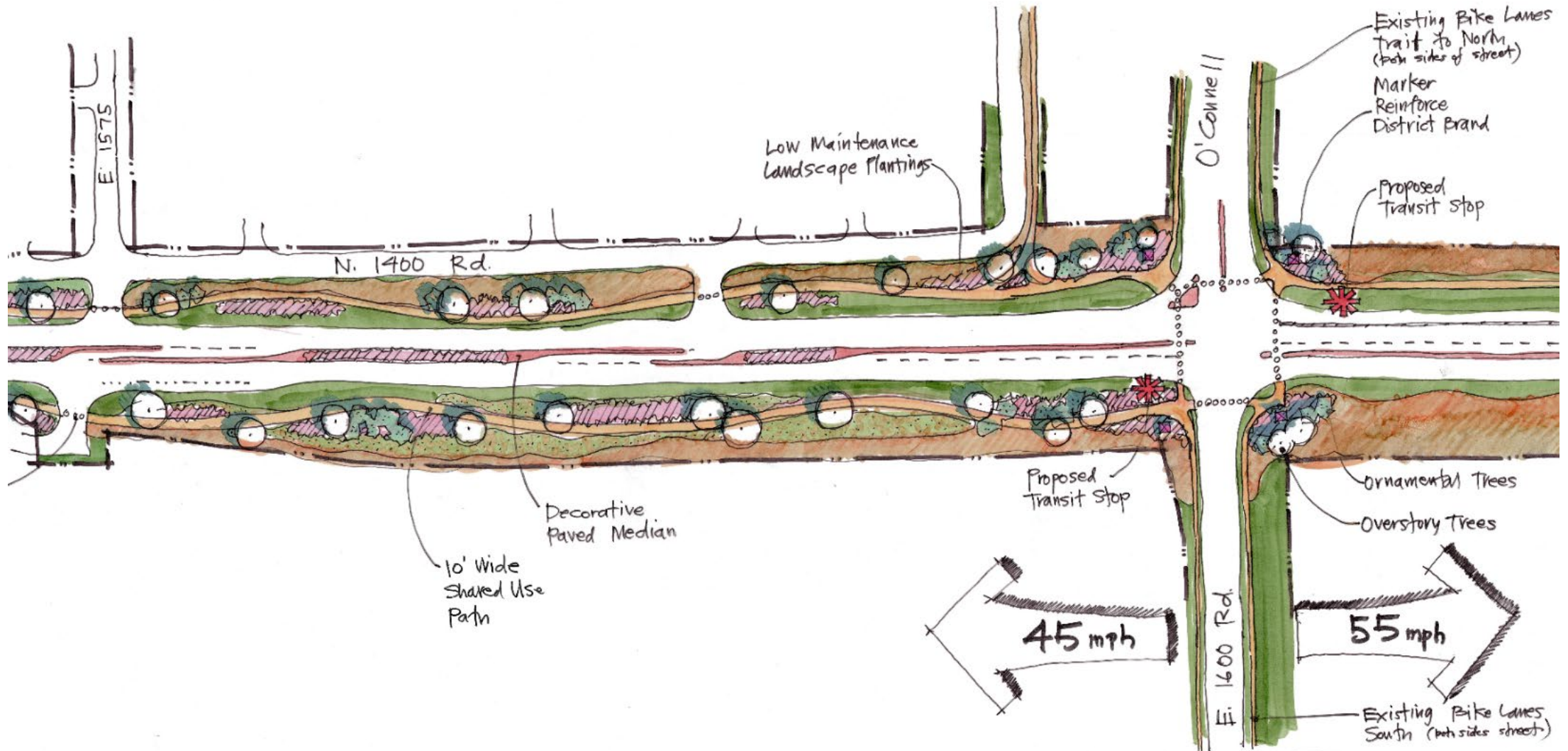
ILLUSTRATIVE CORRIDOR PLAN *(Haskell Ave. to West of Harper St.)*



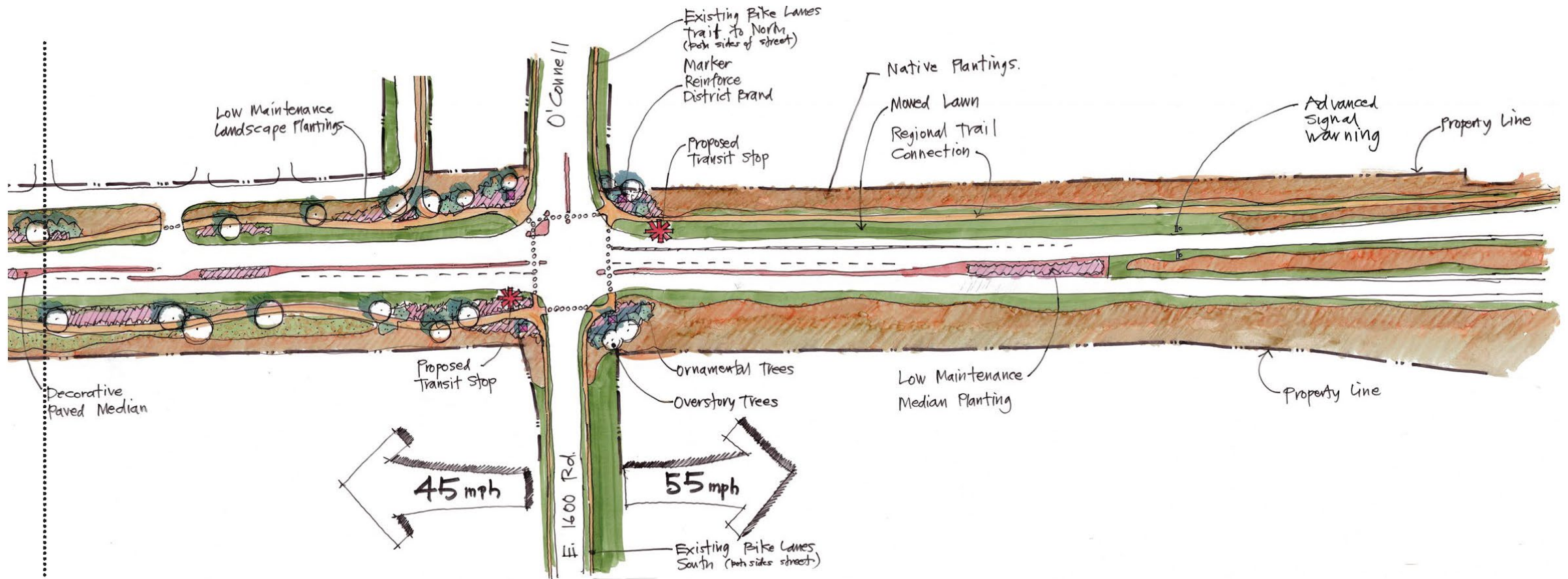
ILLUSTRATIVE CORRIDOR PLAN *(West of Harper St. to Country Inn & Suites)*



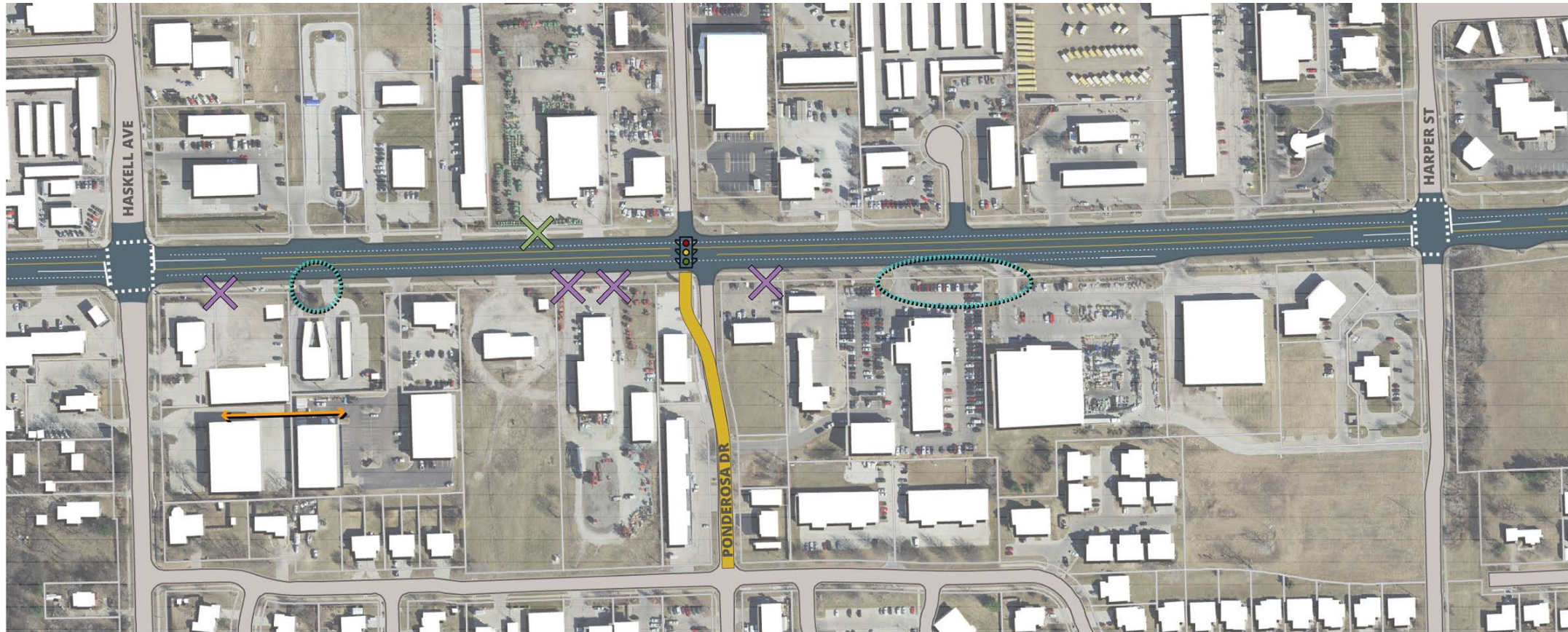
ILLUSTRATIVE CORRIDOR PLAN *(East 1575 to O'Connell)*



ILLUSTRATIVE CORRIDOR PLAN *(Country Inn & Suites to Eastern City Limits)*



ACCESS MANAGEMENT



- East 23rd Street Corridor Project Limits** (*Learnard Avenue to eastern city limits*)
- Study Area** (*A quarter-mile buffer area surrounding the East 23rd Street Corridor Study Project Limits*)
- Enlargement Plan Boundary**

Proposed Features and Opportunities

- Opportunity to Realign Intersection** (*upon development or redevelopment*)
- Opportunity to Combine Driveway** (*upon development or redevelopment*)
- Opportunity to Close Driveway** (*upon development or redevelopment*)
- Previously Closed Driveway**

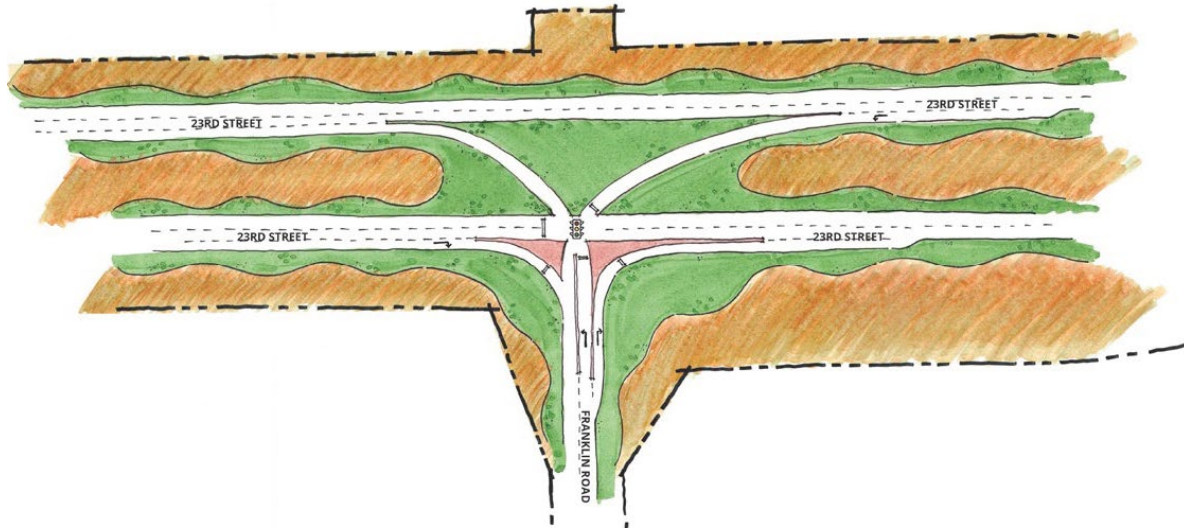
- Proposed Cross Access Easement**
- Potential Signalization with Intersection Realignment**



© Olsson, 2018
Location Reference Map

SAFETY CONSIDERATIONS

TURBO-T (*recommended at Franklin Rd.*)



ADVANCED SIGNAL WARNINGS



olsson

COMPLETE STREETS CHECKLIST				
PROJECT NAME		East 23rd Street Multimodal Corridor Study		
LOCATION		Leonard Avenue to East City Limit		
PROJECT INFORMATION				
		Explanation		
Classification	Arterial			
Speed limit	45 - 55 mph			
AADT	20,000			
Right-of-way width	120' or more			
Safe Route to School	No			
Bus/Transit route	Yes			
On planned bikeway network	Yes			
Existing bicycle accommodations	None			
Existing sidewalk	Both sides			
Checklist Consideration		Yes	No	Explanation
Does the project provide a main route to a significant destination?	Park/Recreation area	X		
	School		X	
	University	X		Haskell University
	Shopping/Commercial area	X		Adjacent land-use is Commerical
	Employment center	X		University/Commercial/Venture Park
	Community facility	X		DG Co. Fairgrounds
	Other:			
Does the project provide access across a natural or human-made barrier?			X	
Are there nearby parallel routes that provide a similar level of convenience and connectivity?			X	
Pedestrian and bicycle demand	Is there a high amount of bicycle and pedestrian traffic along route	X		
	Is there a high amount of bicycle and pedestrian crossings	X		
	Is there a history of bicycle or pedestrian crashes (last 3 yrs)		X	
CONSTRAINTS				
Are there constraints to consider in reviewing this project for possible inclusion of Complete Streets elements?				
Constraint Type		Yes	No	Explanation and Date of Comment
Right-of-Way			X	
Utilities			X	
Environmental			X	
Funding			X	
Maintenance			X	
Other Existing Condition			X	
Other:				
COMPLETE STREETS ELEMENT REVIEW				
For each of the sections below, indicate whether a Complete Streets Element is/is not included. Provide an explanation of the element to be used or rationale why the element is not being included.				
Complete Streets Element	Checklist Consideration	Included	Not Included	Explanation and Date of Comment
Traffic Calming				
Does the roadway design consider elements to improve safety for pedestrians, bicyclists, and motorists?	Narrower driving lanes	X		
	Lane reduction		X	
	Other:	X		Medians at key intersections
Pedestrian and Bicycle Facilities:				
Reduce pedestrian crossing distance at intersections where high motor vehicle counts and high pedestrian counts are expected.	Pedestrian island		X	
	Curb bump-outs		X	
	Other:			
Does it provide appropriate pedestrian accommodations?	Sidewalks	X		
	Crosswalks	X		
	Mid-block crosswalks		X	
	Buffers between roadway and sidewalks	X		
	Lighting	X		
	Street furniture	X		
	Other:			
Does it provide appropriate accommodations in accordance with bikeway plan?	Bike lane		X	
	Buffered bike lane		X	
	Protected bike lane		X	
	Shared use path	X		Shared use path provided on both sides
	Bike boulevard		X	
	Bike sharrow		X	

	Bike racks		X	
	Other bike parking		X	
	Other:			
Transit Facilities				
Does it provide appropriate transit accommodations?	Transit shelters		X	
	Accessible location (sidewalk, pad)	X		
	Bus turnout		X	
	Public seating	X		Benches at transit stops anticipated
	Signage/maps		X	May be included in final design
	Trash/recycling receptacles		X	May be included in final design
	Other:			
On-Street Parking				
Existing Parking	None			
Planned Parking	No change			
Streetscaping				
Does the project include streetscaping along newly constructed or reconstructed roadways?	Street trees	X		
	Landscape plantings	X		
	Planters	X		
	Buffer strips	X		
	Other:			
ADA Accessibility				
Does it include appropriate ADA design features?	Curb ramps	X		
	Detectable warning surface	X		
	Crossing distance consideration	X		
	Signal timing	X		
	Other:			
IMPLEMENTATION AND EVALUATION				
<i>Checklist Consideration</i>		<i>Yes</i>	<i>No</i>	<i>Explanation and Date of Comment</i>
Have you provided advance notification and/or opportunity for review to key groups impacted by the project?	Parks and Recreation	X		Design charrette held in June 2019, open to public
	Historic Resources	X		Design charrette held in June 2019, open to public
	Transit	X		Design charrette held in June 2019, open to public
	Fire/Med	X		Design charrette held in June 2019, open to public
	Other City Departments	X		Design charrette held in June 2019, open to public
	Neighborhood Association	X		Design charrette held in June 2019, open to public
	School Districts	X		Design charrette held in June 2019, open to public
	University	X		Design charrette held in June 2019, open to public
Maintenance Are there any added maintenance projections for this project?	Pavement rehabilitation		X	Existing facility
	Pavement marking		X	Existing facility
	Street sweeping		X	Existing facility
	Snow removal	X		New multiuse paths will require snow removal
	Street trees	X		
	Site furnishings	X		Landscape costs
	Pavers		X	
	Other:			

David Cronin

From: Jackie Carroll <jackie2ku@gmail.com>
Sent: Wednesday, September 4, 2019 2:49 PM
To: David Cronin; earthpaden@hotmail.com; jjzieg@sunflower.com; rkmay@usd497.org; Charlie Bryan; Hultine, Donna R.; cottagecat@aol.com; carolb; nick.kuzmyak@gmail.com; Steve Evans; City Commission Agendas
Subject: E 23rd St Multimodal Corridor Plan

Hello Transportation Commission,

Please include this in the agenda materials for the 9.9.19 Transportation Commission Regular Meeting.

Disclosure: I serve as chair of the Sustainability Advisory Board but comments are my own. I also live one block outside the corridor study area.

Thank you to City staff for the work on incorporating complete streets strategies in the E 23rd St Corridor plan! We absolutely need to increase usability and access to pedestrian, bike, and transit modalities and it's obvious this plan prioritizes that. Here are the few thoughts that came up for me as I reviewed the plan:

- Speeds DO feel too fast, but particularly between Haskell and Learnard/Barker. Drivers must speed up quickly and brake quickly both eastbound and westbound in that section of road. This is not great for safety, traffic flow, or fuel efficiency/pollution.
- I am in strong support of building out all of the transit stops to include paved access, shelters, and benches.
- Lawns are a terrible waste of resources. It would be wonderful to consider very short ground cover plants or some other landscaping strategy to replace the mowed lawn areas to avoid the need to water and mow. We need to figure out ways to radically decrease our greenhouse gas emissions in everything we do.
- I think it would be an overreach and not particularly environmentally friendly to require replacing business signage before it's broken beyond repair simply to improve aesthetics. Implementing a visual standards policy that applies only to new signage and replacement signage makes more sense.

Thank You!
Jackie Carroll

MEMO



DATE: August 30, 2019

TO: David Cronin, P.E.
City Engineer, City of Lawrence

FROM: Aaron Frits, P.E. *AMF*
Road Design Leader

Eisenhower State Office Building
700 S.W. Harrison Street
Topeka, KS 66603-3745
kdot#publicinfo@ks.gov
<http://www.ksdot.org>

REFERENCE: 10-23 KA-3634-08
Douglas County

SUBJECT: K-10/27th/Wakarusa Drive Interim Safety Intersection
Improvements

KDOT has recently undertaken a study of the subject intersection to develop improvement alternatives that improve traffic flow and safety. KDOT hired WSP USA to develop a series of interim safety improvements, which will achieve the goals of the study, namely to minimize traffic delays and reduce the number and severity of crashes.

As part of an evaluation team, KDOT has engaged representatives from your office, Douglas County Engineering Staff, and the City of Lawrence Parks & Recreation Department to provide input and concurrence on the recommended improvements.

Attached is a diagram with the descriptions of the proposed interim improvements that KDOT would like to present to the Lawrence Transportation Commission for their consideration.

The intersection currently operates at Level of Service (LOS) D for both the K-10/27th Street intersection and the Wakarusa Drive/27th Street intersection. After these intersection improvements are constructed, the K-10/27th Street intersection is expected to operate at LOS C, and the Wakarusa Drive/27th Street intersection at LOS A. As well, the intersections should see an accident reduction of 1.75 accidents per year. Lastly, based on the estimated construction cost of \$500,000; utilizing AASHTOWare Safety Analyst, the Benefit/Cost ratio for these improvements over 3 years would be 10.43.

Construction is currently programmed for Spring 2020, in combination with an overlay project on K-10 from I-70 to US-59.

I look forward to the opportunity to present to the transportation commission on Sept. 9, 2019 on the proposed improvements.

Please contact me with questions or comments at (785) 296-4139.

AF:mt

By e-mail: Steve Baalman, Area 4 Metro Engineer, Topeka

**PRELIMINARY
PLANS**
FOR INFORMATION ONLY
DATE Aug 23, 2019

- ① Adaptive Traffic Signal with Improved Detection
- ② Eastbound K-10 Right Turn (pavement marking on existing shoulder) with some widening
- ③ Wakarusa and 27th Street Lane Assignments
- ④ 27th Street Modified Traffic Flow/Access (pavement marking, signing, and raised delineators)
- ⑤ Adjusted Pedestrian Crossing Location
- ⑥ 27th Street Right Turn Lane
- ⑦ Extend Existing Westbound K-10 Right Turn Lane (pavement marking and widening)

Legend

-  Roadway Pavement
-  Shared Use Path

50' 0 50' 100'



Low Cost Options
10-23 KA-3634-08

Memorandum

City of Lawrence

Municipal Services & Operations

TO: Transportation Commission
CC: David Cronin, City Engineer
FROM: Jessica Mortinger, Transportation Planning Manager
Jacob Baldwin, Project Engineer
DATE: September 3, 2019
RE: Non-Motorized Prioritization Policy Pedestrian Access to Destinations scoring options

Background

On August 5th, Transportation Commissioners provided feedback to staff requesting another weighted option for pedestrian access to destinations, and to see how each scoring option impacted the overall score of a project.

Summary

Pedestrian Access to destinations scoring is assigned to prioritize locations in closer proximity to destinations with heightened pedestrian demand. Three different methods of scoring are provided in the options below.

Option 1 – Existing Approved

This score is symbolized by creating buffers (based on the pedestrian network routing) of identified locations.

Pedestrian Access to Priority Destinations (select one, max 5 pts)	
Within ¼ mi of school or 1/8 mi of public transit stop	5
Within ½ mi of school, ¼ mi of transit stop, ¼ mi of neighborhood or community retail (includes medical facilities, grocery store, farmers market and retail food outlets), 1/8 mi of park, 1/8 mi of library, or 1/8 of post office	3
Farther than ½ mi of school, ¼ mi of transit stop, ¼ of neighborhood or community retail, 1/8 mi of park, 1/8 mi of library, or 1/8 mi of public institutions (ex: post office, city hall)	1

This scoring is approved in the existing Non-Motorized Prioritization Policy.

Option 2 – Cumulative Points

This score is assigned by distributing points for each destination within a range of the proposed project. Points accumulate based on the number of destinations within specified distances.

Destinations: schools & university buildings, public transit stops, neighborhood/community retail, parks/public attractions, public/government institution, non profits, daycare & health clinic

1/8 mile	3
1/4 mile	2
1/2 mile	1

These scores are broken into quintiles and assigned a point range of 1 to 5.

Pedestrian Access to Priority Destinations (select one, max 5 pts) Cumulative pts for each destination within range of the proposed project. Destinations include: schools & university buildings, public transit stop, neighborhood/community retail, park/public attraction, public/government institution, non profit, daycare & health clinic.	
The values greater than the Fourth quintile	5
The values greater than the Third quintile up to the Fourth quintile	4
The values greater than the Second quintile up to the Third quintile	3
The values greater than the First quintile up to the Second quintile	2
The values greater than zero up to the First quintile	1

This option was presented at the August 5th meeting.

Option 3 – Weighted Cumulative Points

Points accumulate based on the number of destinations within specified walking distances with a weight to equalize schools.

The Equalization Multiplier or *Ex* is used to adjust for the importance of schools in the cumulative scoring system. Compared to other facility categories there a fewer number of schools. Therefore to determine the Equalization Multiplier for destinations Category A you solve the equation below for *Ex* and round down to the nearest 5.

$$Ex \approx B \text{ or } C (\text{choose higher value}) / A$$

Ex is rounded to the nearest 5

Example: Number of destinations per category

A) Schools	37
B) Parks/Public Attraction/Bus Stops	2180
C) Gov/Health/Day Care/Non-Profit/Higher Ed/Retail	2243

$$Ex \approx 2243 / 37 \quad \text{or} \quad Ex = 60 \text{ when rounded to the nearest 5.}$$

Category A base scores are multiplied by 60 for cumulative scoring in the model. Therefore a project will receive 720 points for each school facility within a 1/8 mile walking distance, 480 points for each school facility within a 1/4 mile walking distance

Equalized Scoring Matrix

Facility Category	within 1/8 mile	Within 1/4 mile	Within 1/2 mile	Equalization Multiplier (Ex)
A) Schools K-12	720	480	240	60
B) Park Entry Points, Public Attraction, Public Transit	6	4	2	Not applied
C) Public Government Institution, Health, Daycare, Higher Education, Non Profit, Retail	3	2	1	Not applied

This is a new option based on feedback concerning the underweighting of schools in option 2.

Pedestrian Project Scores

The attached scores display each pedestrian project scored under each policy. Note that for Option 2 & 3, scores could also be impacted by other changes to the policy noted in the staff memo dated July 29th.

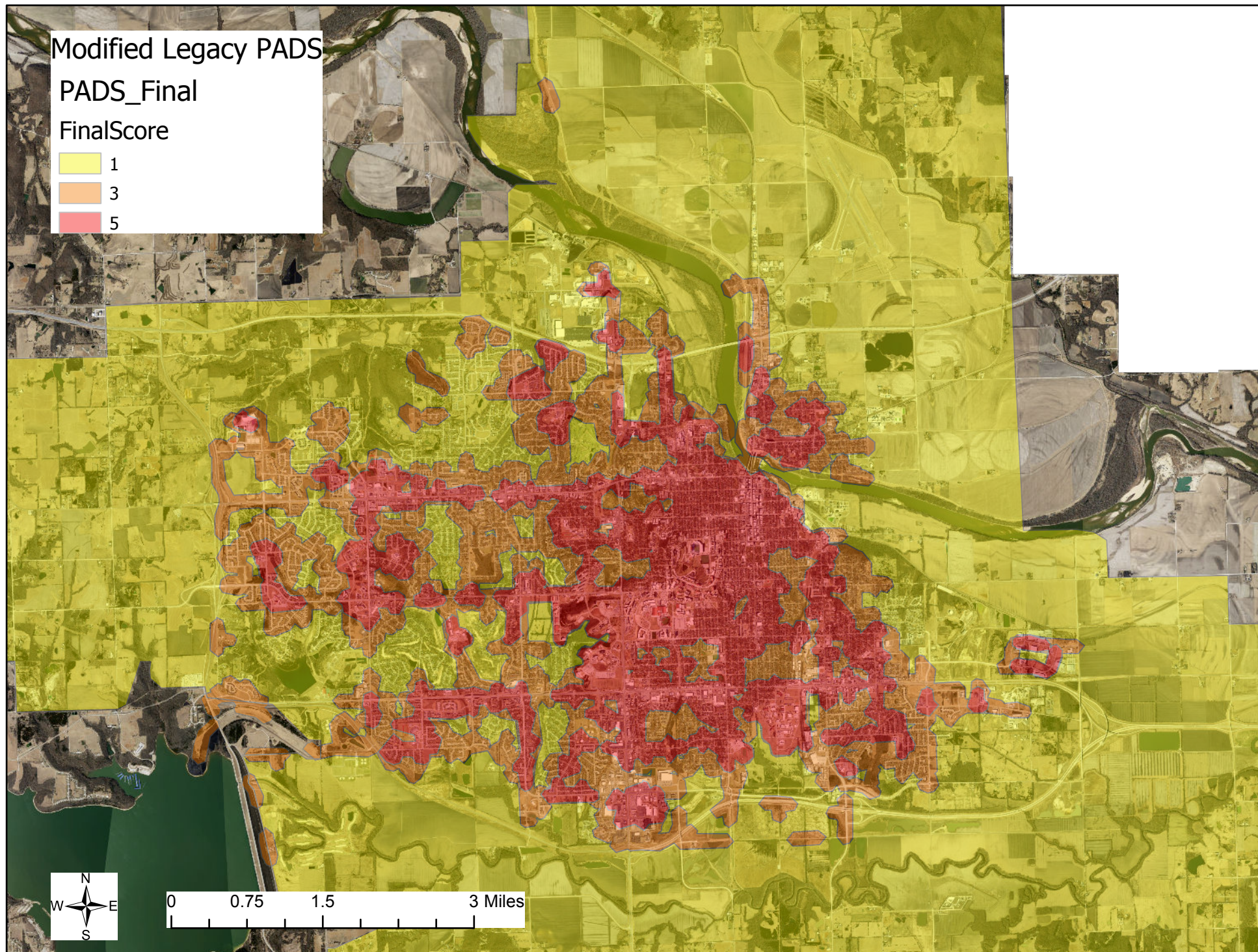
Action Requested

The Transportation Commission should determine which option they would like to use to score pedestrian access to destinations, to be included in the non-motorized prioritization policy and recall TC18-001 and replace with the revised policy TC19-001.

Attachments

- [Current Policy: City of Lawrence Transportation Commission Non-motorized Projects Prioritization Policy, Policy No. TC18-001](#)
- [Agenda Item for Transportation Commission 4/2/2018: 2017/2018 Pedestrian/Bike/Ramp Projects and 2017/2018 CDBG Projects](#)
- [July 29th Non-Motorized Prioritization Policy Update Memo](#)
- [Proposed Updated Policy: City of Lawrence Transportation Commission Non-motorized Projects Prioritization Policy, Policy No. TC19-001](#)
- [Bikeway Demand Maps – Existing & Proposed](#)
- Correspondence on Policy since August 2019
- Pedestrian Access Maps Option 1, 2 & 3
- Pedestrian Project Scoring based on each option

Option 1 – **Existing Approved** -Pedestrian Access to Priority Destinations

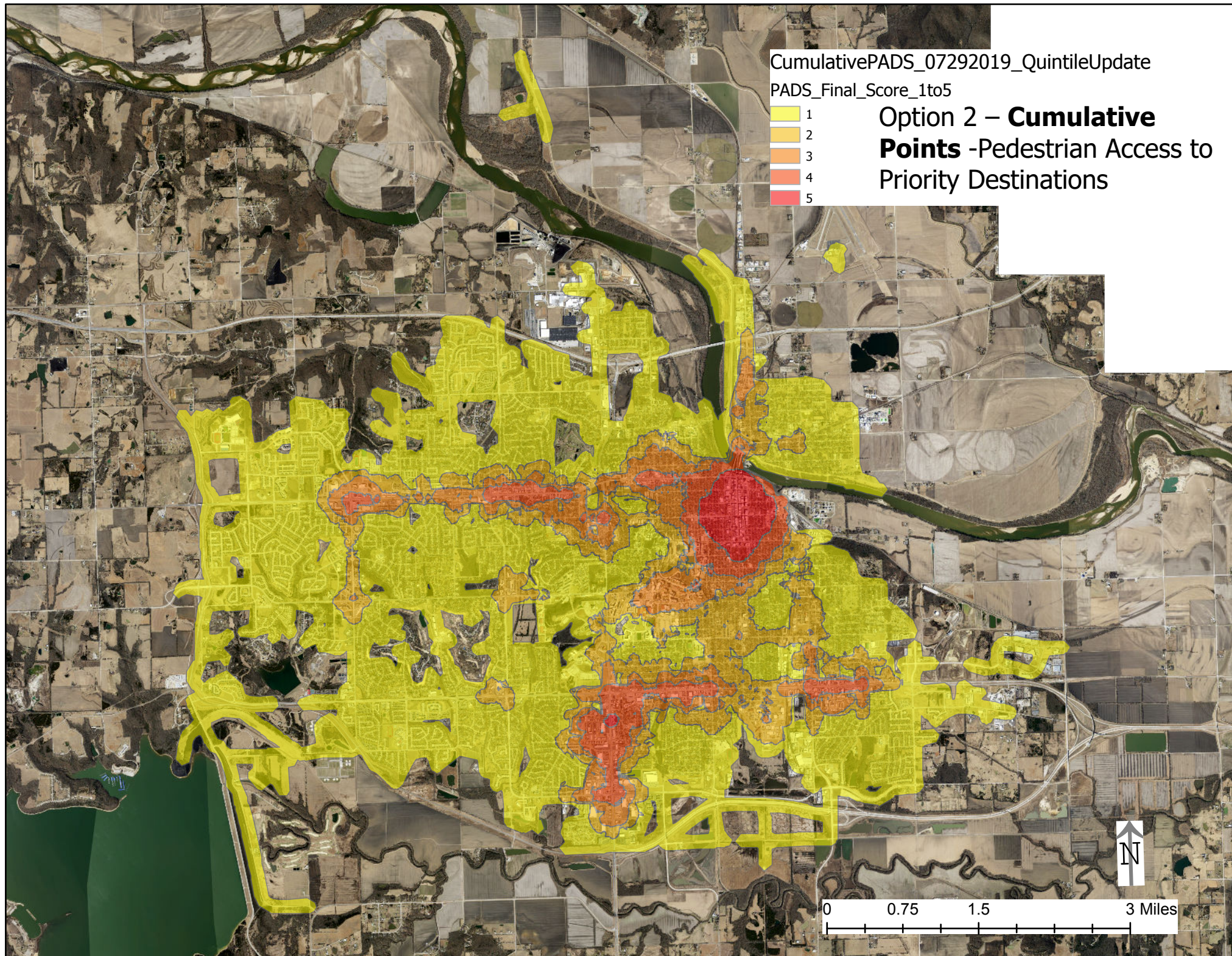


CumulativePADS_07292019_QuintileUpdate

PADS_Final_Score_1to5

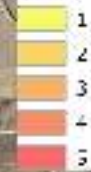


Option 2 – **Cumulative**
Points -Pedestrian Access to
Priority Destinations

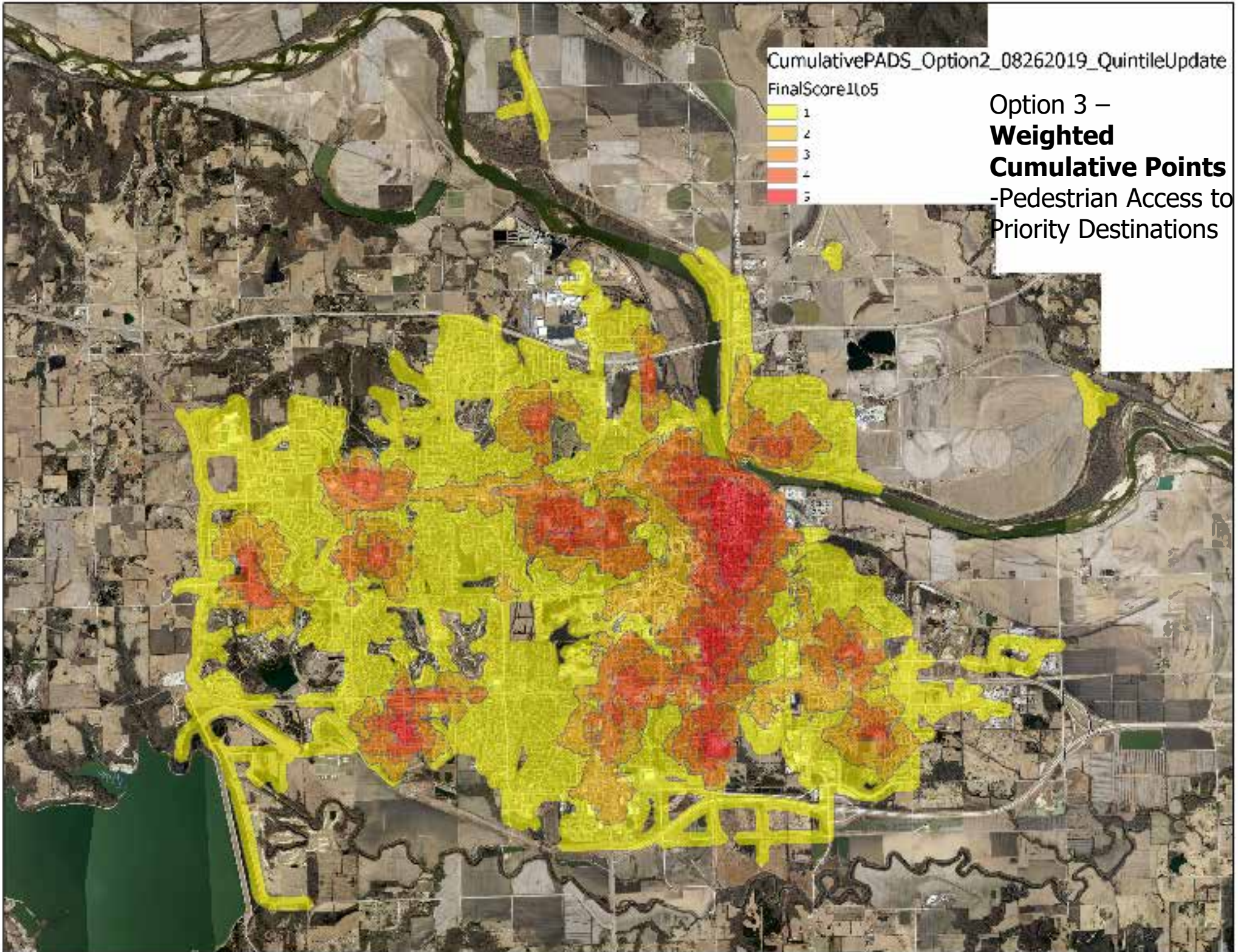


CumulativePADS_Option2_08262019_QuintileUpdate

FinalScore1to5



Option 3 –
**Weighted
Cumulative Points**
-Pedestrian Access to
Priority Destinations



GIS ID #	Project	Side	From	To	Road Classificatio	Option 1 - Existing Approved	Option 2 - Cumulative Points	Option 3 - Weighted Cumulative Points	Cost Estimate	Status
P027	W 23rd St	North	Tennessee St	Vermont St	Arterial	13	12	13		Complete
P028	W 23rd St	North	Ohio St	Tennessee St	Arterial	13	13	14		Complete
P008	E 23rd St	South	550' East of Harper	750' east to driveway	Arterial	11	12	11	\$ 144,823	
P015	Iowa St	East	15th St/Bob Billings Pkwy	University Dr	Arterial	11	10	12	\$ 184,205	
P085	W 9th St	North	Hilltop Dr	400' East of Avalon Rd	Arterial	11	11	12	\$ 460,881	
P019	E 23rd St	South	1200' east of O'Connell	O'Connell Rd	Arterial	10	11	11	\$ 117,196	
P020	E 23rd St	North	FF St	200' east	Arterial	10	11	11	\$ 7,854	
P021	E 23rd St	North	280' East of FF St	Venture Park Way	Arterial	10	11	10	\$ 12,461	
P026	McDonald Dr	East	Princeton Blvd/W 2nd St	Bluffs Dr	Arterial	10	10	10	\$ 374,368	
P030	McDonald Dr	West	Princeton Blvd/W 2nd St	Bluffs Dr	Arterial	10	10	10	\$ 397,665	
P050	Lincoln St	Both	N 2nd St	N 4th St	Street	10	8	9	\$ 666,681	
P051	Ridge Ct	West	W 26th St	W 27th St	Street	10	7	6	\$ 32,713	
P052	Yale Road	Both	Centennial Dr	Crestline Dr	Street	10	9	11	\$ 149,254	Selected
P053	Lincoln St	North	N 4th St	N 7th St	Street	10	4	6	\$ 295,994	
P054	N 7th St	West	Lincoln St	Lyon St	Collector	10	5	7	\$ 170,395	
P056	Elm St	North	N 6th St	N 8th St	Street	10	5	7	\$ 185,416	
P057	Elm St	North	200 LF East of N 2nd St	N 3rd St	Street	10	6	6	\$ 47,710	
P058	Oregon St	East	E 13th St	260 LF South of E 12th St	Street	10	5	5	\$ 154,870	
P060	Harper St	East	E 19th St	E 17th St	Collector	10	6	8	\$ 87,689	
P062	Maple Ln	East	E 21st Ter	280 LF South of Clare Rd	Street	10	5	7	\$ 21,920	
P063	E 21st Ter	South	140 LF South of E 21st St	Maple Ln	Street	10	5	7	\$ 108,152	
P064	E 25th Ter	South	Ponderosa Dr	150 LF West of Carlton Dr	Collector	10	6	7	\$ 173,464	
P065	Hampton St	North	Kensington Rd	Mayfair Dr	Street	10	4	6	\$ 215,830	
P066	Mayfair Dr	East	Hampton St	E 27th St	Street	10	4	7	\$ 2,240,714	
P069	Vermont St	East	150 LF North of W 19th St	250 LF South of W 17th St	Street	10	5	8	\$ 89,110	
P070	W 20th St	South	Tennessee St	Vermont St	Street	10	6	9	\$ 54,888	
P071	Tennessee St	East	W 21st St	W 20th St	Street	10	5	8	\$ 87,417	
P072	Vermont St	East	W 20th St	340 LF South of W 19th St	Street	10	5	7	\$ 20,095	
P073	W 18th St	North	Tennessee St	Vermont St	Street	10	8	11	\$ 171,815	
P074	Vermont St	East	250 LF North of W 17th St	W 16th St	Street	10	5	7	\$ 44,954	
P075	W 15th St	South	150 LF East of Kentucky St	Vermont St	Street	10	5	8	\$ 9,696	
P077	W 5th St	North	Mississippi St	Tennessee St	Street	10	8	8	\$ 88,347	
P080	W 7th St	North	Missouri St	Illinois St	Street	10	7	7	\$ 79,707	
P081	Mississippi St	East	W 5th St	W 6th St	Street	10	7	7	\$ 83,284	
P083	Michigan St	East	W 3rd St	W 2nd St	Collector	10	9	10	\$ 78,080	Complete
P084	Hilltop Dr	West	Harvard Rd	W 9th St	Street	10	6	7	\$ 18,015	
P086	Ousdahl Rd	East	W 23rd St	W 24th St	Collector	10	9	9	\$ 343,489	
P087	Crestline Dr	East	Crestline Ct	W 27th St	Street	10	6	5	\$ 137,039	
P088	W 27th St	South	Crestline Dr	100 LF East of Chipperfield Rd (Private)	Collector	10	9	7	\$ 54,387	Complete
P089	Belle Haven Dr	West	W 27th Ter	W 29th St	Street	10	4	7	\$ 90,690	
P090	Belle Haven Drive	Both	W 27th St	W 27th Ter	Street	10	8	11	\$ 51,325	
P091	Alabama St	West	Jasu Dr	W 27th St	Collector	10	8	7	\$ 249,546	
P092	Ousdahl Rd	East	W 19th Ter	W 22nd Ter	Collector	10	8	8	\$ 284,166	Selected
P095	Scottsdale St	West	W 25th St	W 27th St	Street	10	4	7	\$ 98,657	
P096	W 24th St	South	Via Linda Dr	W 25th St	Street	10	4	7	\$ 92,576	
P097	Ranch St	East	W 24th St	Ranch Way (Private)	Street	10	4	5	\$ 33,064	
P098	Wakarusa Dr	West	Stoneback Dr	440 LF North of W 27th St	Arterial	10	8	9	\$ 52,562	
P103	Oak Tree Dr	North	Woodland Dr	Goldfield St	Street	10	4	6	\$ 292,637	

P104	Wildwood Dr	East	Woodland Dr		Street	10	4	7	\$ 97,367	
P105	Grove Dr	North	Wildwood Dr	Harvard Rd	Street	10	4	5	\$ 78,510	
P108	Palisades Dr	South	Silver Rain Rd	George Williams Way	Street	10	4	7	\$ 158,362	
P113	Tillerman Dr	South	Eagle Pass Dr	N Kasold Dr	Street	10	4	4	\$ 217,006	
P122	Yale Rd	North	Schwarz Rd	Crestline Dr	Street	10	5	8	\$ 68,901	
P123	Schwarz Rd	East	W 9th St	Yale Rd	Street	10	6	7	\$ 42,998	
P124	Sunset Dr	East	Harvard Rd	Stratford Rd	Street	10	5	7	\$ 109,427	
P129	W 26th St	North	Ousdahl	Ridge Ct	Street	10	7	5	\$ 47,125	
P130	Park Hill Ter	South	Louisiana Street	Kansas St	Street	10	4	8	\$ 62,531	
P134	E 21st Street	Both	Miller Dr	E 21st Ter	Street	10	10	11	\$ 61,969	
P136	Oak Tree Dr	East	Inverness Dr	W 12th St	Street	10	4	6	\$ 27,817	
P139	Arrowhead Dr	West	Peterson Rd	Brett Dr	Street	10	4	5	\$ 68,945	
P141	Harvard Rd	East	Iowa St	Hilltop Dr	Collector	10	7	8	\$ 61,132	Complete
P142	Harvard Rd	South	Crestline Dr	Iowa St	Collector	10	10	12	\$ 137,232	
P143	Harvard Rd	South	570 LF West of Crestline Dr	Crestline Dr	Street	10	5	7	\$ 58,617	
P145	W 18th St	Both	Ohio St	Tennessee St	Street	10	11	13	\$ 88,638	
P147	E 15th St	South	Haskell Ave	Maple Ln	Arterial	10	9	9	\$ 94,599	Selected
P175	N 7th St	East	Lincoln St	Maple St	Collector	10	6	7	\$ 71,548	
P181	W 21st St	South	Emerald Dr	Naismith Dr	Collector	10	6	8	\$ 143,612	
P240	E 19th St	south	Haskell Ave	Maple Ln	Arterial	10	10	11	\$ 243,748	
P061	Davis Rd	North	Clare Rd	Harper St	Street	10	5	7		
P068	E 19th St	South	Burroughs Creek Trail	Moodie Rd	Arterial	10	10	10		Selected
P076	E 15th St	South	Rhode Island St	240 LF West of Hanscom St	Collector	10	10	12		Selected
P082	Michigan St	East	W 5th St	W 4th St	Collector	10	9	9		Selected
P137	N 7th St	East	Locust St	Elm St	Street	10	5	6		Complete
P138	Michigan St	East	W 4th St	W 3rd St	Collector	10	10	9		Complete
P146	E 15th St	South	Hanscom Rd	Haskell Ave	Collector	10	10	10		Complete
P007	Lakeview Rd	North	N Iowa St	Timberedge Rd	Arterial	9	6	6	\$ 48,201	
P025	W 9th St	North	Highland Dr	Hilltop Dr	Arterial	9	11	12	\$ 37,696	
P031	Kasold Dr	West	W 5th Ter	Trail Rd	Arterial	9	13	12	\$ 330,510	
P014	Kasold Dr	East	Clinton Pkwy	W 22nd Ter	Arterial	9	11	10		Selected
P032	Kasold Dr	East	W 5th Ter	Trail Rd	Arterial	9				
P047	Lakeview Rd	South	Timberedge Rd	City Limits	Arterial	9				
P001	E 19th St	South	Clare Rd	Edgelea Rd	Arterial	8	7	9	\$ 89,901	
P005	N Iowa St	East	South of Riverridge Rd		Arterial	8	7	7	\$ 12,908	
P006	Kasold Dr	East	W 6th St	Westridge Dr	Arterial	8	13	11	\$ 23,342	
P018	E 19th St	South	Harper St	Brookwood Mobile Home Park	Arterial	8	7	9	\$ 88,952	
P035	Lakeview Rd	South	N Iowa St	Timberledge Rd	Arterial	8	5	5	\$ 138,689	
P043	Haskell Ave	East	E 12th St	E 13th St	Arterial	8	9	9	\$ 64,593	
P044	Haskell Ave	East	E 13th St	E 14th St	Arterial	8	9	9	\$ 63,663	
P045	Kasold Dr	East	Tam O'Shanter Dr	Bob Billings Pkwy	Arterial	8	11	11	\$ 448,995	
P055	N 8th St	East	Elm St	Walnut St	Street	8	4	5	\$ 61,504	
P059	E 13th St	North	Haskell Ave	Brook St	Street	8	5	4	\$ 89,540	
P067	Kensington Rd	East	E 28th St	E 30th St	Street	8	4	6	\$ 151,378	
P078	Illinois St	East	W 5th St	W 3rd St	Street	8	5	7	\$ 114,294	
P079	W 5th St	North	Wisconsin St	180 LF West of Alabama St	Street	8	7	8	\$ 403,501	
P093	Crestline Dr	East	W 30th St	Crestline Pl	Street	8	4	4	\$ 99,263	
P094	Winterbrook Dr	West	450 LF South of W 25th Ter	Kasold Dr	Street	8	4	4	\$ 149,526	
P099	Wimbledon Dr	West	Killarney Ct	Inverness Dr	Street	8	4	6	\$ 148,613	
P100	Carmel Dr	West	Inverness Dr	Killarney Ct	Street	8	4	4	\$ 498,596	

P102	Goldfield St	South	Oak Tree Dr	Harvard Rd	Street	8	4	5	\$ 41,725	
P106	Stonecreek Dr	West	Harvard Rd	Legends Dr	Street	8	4	4	\$ 229,449	
P107	April Rain Rd	West	Harvard Rd	Stoneridge Dr	Street	8	4	6	\$ 474,534	
P109	Harvard Rd	North	Monterey Way	Randall Rd	Collector	8	5	5	\$ 165,224	
P110	Trail Rd	South	Folks Rd	Monterey Way	Collector	8	6	6	\$ 223,763	
P111	Sharon Dr	West	Springhill Dr	Trail Rd	Street	8	4	4	\$ 183,503	
P112	Trail Rd	North	Monterey Way	Kasold Dr	Collector	8	7	6	\$ 163,803	
P114	Brett Dr	North	Brentwood Dr	Stowe Ct	Street	8	4	4	\$ 61,618	
P115	Creekwood Dr	North	Glenview Dr	Princeton Blvd	Street	8	4	6	\$ 144,673	
P117	Rockfence Pl	East		Riverview Rd	Street	8	4	5	\$ 293,138	
P118	Trail Rd	North	Kasold Dr	Rockfence Pl	Collector	8	6	5	\$ 66,313	
P119	Trail Rd	North	290 LF West of Millstone Dr	Settlers Dr	Collector	8	6	5	\$ 59,758	
P120	Schwarz Rd	South/West	Lawrence Ave	W 6th St	Street	8	7	6	\$ 90,409	
P125	Tomahawk Dr	South	Rockfence Pl	Bighorn Ct	Street	8	4	6	\$ 101,097	
P131	Kansas St	East/South	Park Hill Ter	Montana St	Street	8	5	8	\$ 119,182	
P132	E 17th St	North	Harper St	Powers St	Street	8	4	4	\$ 18,656	
P135	E 21st Ter	Both	E 21st St	120 LF South of E 21st St	Street	8	8	9	\$ 21,113	
P140	Brentwood Drive	West	Brett Dr	Arrowhead Dr	Street	8	4	4	\$ 193,770	
P144	Ousdahl Rd	West	W 24th St	W 26th St	Collector	8	8	8	\$ 415,874	
P154	Princeton Blvd	North	Kingston Dr	Yorkshire Dr	Collector	8	8	9	\$ 95,299	Selected
P236	W 19th Street Crossing		Alabama St		Arterial	8	9	12	\$ -	
P002	E 19th St	South	Delaware St	340 LF West of Moodie Rd	Arterial	8	10	10		Selected
P003	E 19th St	South	Learnard Ave	Delaware St	Arterial	8	10	11		Selected
P009	Bob Billings Pkwy	South	Inverness Dr	Monterey Way	Arterial	8	9	10		
P010	Haskell Ave	East	E 12th St	85 LF North of E 12th St	Arterial	8	8	8		Complete
P048	W 19th St	North	Naismith Dr	Maine St	Arterial	8	9	10		Complete
P049	W 19th St	North	Iowa St	Naismith Dr	Arterial	8	9	10		Selected
P238	Haskell Ave crossing		E 16th St		Arterial	8	10	10		Complete
P004	E 19th St	South	Barker Ave	Learnard Ave	Arterial	8				
P224	Princeton Blvd	North	Kingston Dr	Providence Rd	Collector	8				
P029	Kasold Dr	East	W 22nd St	Tam O'Shanter Dr	Arterial	7	10	10	\$ 549,868	
P033	Kasold Dr	West	Trail Rd	Tomahawk Dr	Arterial	7	10	10	\$ 240,479	
P037	N 3rd St	West	KTA Entrance Rd	City Limits	Arterial	7	11	10	\$ 159,231	
P039	N 3rd St	East	KTA Entrance Rd		Arterial	7	11	10	\$ 105,344	
P040	N 3rd St	East	KTA Entrance Rd	City Limits	Arterial	7	10	10	\$ 51,632	
P148	Rockledge Rd	East	W 9th St	National Ln	Collector	7	8	9	\$ 26,930	
P149	Lyon St	North	N 7th St	600 LF East of N 7th St	Collector	7	5	5	\$ 45,068	
P151	W 2nd St	South	McDonald Dr	Mount Hope Ct	Collector	7	8	8	\$ 213,443	
P155	Naismith Dr	East	W 22nd Ter	W 23rd St	Collector	7	13	12	\$ 14,233	
P156	W 21st St	South	Naismith Dr	Mitchell Rd	Collector	7	6	7	\$ 14,479	
P157	W 21st St	South	Owens Ln	Carolina St	Collector	7	6	7	\$ 27,606	
P158	Naismith Dr	East	W 22nd St	W 22nd Ter	Collector	7	13	12	\$ 21,236	
P159	Naismith Dr	East	W 21st St	W 22nd St	Collector	7	12	12	\$ 45,016	
P160	Naismith Dr	East	W 19th St	W 19th Ter	Collector	7	11	12	\$ 31,239	
P161	Naismith Dr	East	W 19th Ter	W 20th St	Collector	7	11	11	\$ 102,861	
P162	Naismith Dr	East	W 20th St	W 21st St	Collector	7	11	12	\$ 41,269	
P163	W 21st St	South	Mitchell Rd	Owens Ln	Collector	7	6	7	\$ 155,045	
P164	Harper St	West	E 24th St	E 25th Ter	Collector	7	10	10	\$ 58,196	
P172	Lyon St	North	N 2nd St	N 3rd St	Collector	7	7	6	\$ 100,649	
P174	Lyon St	North	N 6th St	N 7th St	Collector	7	5	5	\$ 71,376	

P176	Locust St	North	N 3rd St	N 7th St	Collector	7	8	9	\$ 223,230	
P178	W 21st St	North	Tennessee St	Massachusetts St	Collector	7	6	8	\$ 71,078	
P179	W 21st St	South	Carolina St	Louisiana St	Collector	7	6	9	\$ 93,427	
P180	W 21st St	South	Iowa St	Ousdahl Rd	Collector	7	7	8	\$ 316,655	
P011	W 31st St	North	East of Ousdahl Rd		Arterial	7	9	9		
P041	N 3rd St	East	KTA Entrance Rd		Arterial	7	9	9		Complete
P166	Overland Dr	North	North of Queens Rd		Collector	7	6	6		
P182	Naismith Dr	East	Dillon's Entrance	W 23rd St	Collector	7	9	8	\$ 1,127,517	
P183	W 24th St	North	Eddingham Dr	Naismith Dr	Collector	7	7	7	\$ 315,066	
P185	Crestline Dr	West	W 9th St	Yale Rd	Collector	7	10	11	\$ 74,263	
P186	Rockledge Rd	South	East of Country Club Ter		Collector	7	7	6	\$ 22,561	
P187	Rockledge Rd	North	East of Country Club Ter		Collector	7	7	6	\$ 45,630	
P188	Rockledge Rd	North	East of Country Club Ter		Collector	7	9	8	\$ 45,121	
P189	Rockledge Rd	West	W 6th St	National Ln	Collector	7	9	9	\$ 130,721	
P190	Lawrence Ave	West	Harvard Rd	Bob Billings Pkwl	Collector	7	8	8	\$ 489,864	
P192	Kensington Rd	West	Hampton St	E 27th St	Collector	7	5	8	\$ 122,359	
P193	W 15th St	North	Engel Rd	Iowa St	Collector	7	9	9	\$ 533,801	
P194	Fambrough Dr, W 11th St,	North, South,	Mississippi St	Stratford	Collector	7	10	8	\$ 784,152	
P195	W 2nd St	North	Mount Hope Ct	Michigan St	Collector	7	6	8	\$ 89,277	
P197	Maine St	East	W 6th St	W 4th St	Collector	7	11	11	\$ 127,738	
P198	W 11th St	South	Indiana St	Louisiana St	Collector	7	9	9	\$ 82,625	
P203	W 25th St	North	Iowa St	Ridge Ct	Collector	7	9	8	\$ 71,999	
P204	W 25th St	South	Iowa St	Ridge Ct	Collector	7	9	8	\$ 46,773	
P211	W 21st St	North	Tennessee St	Louisiana St	Collector	7	10	13	\$ 102,764	
P216	W 9th St	North	West of Iowa St		Collector	7	14	14	\$ 87,346	
P226	Michigan St	East	W 6th St	W 5th St	Collector	7	11	10	\$ 53,767	
P227	Alabama St	West	W 23rd St	Jasu Dr	Collector	7	11	10	\$ 103,304	
P229	Barker Ave	East	E 14th St	E 19th St	Collector	7	6	8	\$ 242,874	
P231	W 2nd St	North	McDonald Dr	Mount Hope Ct	Collector	7	8	8	\$ 57,582	
P232	Inverness Dr	West	Wimbledon Dr	2012 Inverness Dr	Collector	7	5	7	\$ 209,152	
P237	Vermont St crossing				Collector	7	9	9	\$ -	
P184	W 24th St	North	94 LF West of Eddingham Dr	Eddingham Dr	Collector	7	7	7		Complete
P213	W 24th St	North	Ousdahl Rd	94 LF West of Eddingham Dr	Collector	7	8	8		Complete
P214	W 24th St	South	Ousdahl Rd	Eddingham Dr	Collector	7	8	8		Complete
P167	Overland Dr	South	South of Queens Rd		Collector	7				
P212	W 21st St	South	Tennessee St	Louisiana St	Collector	7				
P217	W 9th St	South	West of Iowa St		Collector	7				
P218	Princeton Blvd	North	Providence Rd	Iowa St	Collector	7				
P234	Ousdahl	East	W 19th St	W 19th Ter	Collector	7				
P012	Massachusetts St	West	21st St	23rd St	Arterial	6	12	13	\$ 135,863	
P016	N Kasold Dr	East	Creekwood Dr	Peterson Rd	Arterial	6	7	7	\$ 86,837	
P038	N 3rd St	East	KTA Entrance Rd		Arterial	6	11	10	\$ 8,161	
P101	W 12th St	North/South	Oak Tree Dr	Wagon Wheel Rd	Street	6	4	5	\$ 56,336	
P126	Riverview Rd	North	Rockfence Pl	Rockfence Pl	Street	6	4	5	\$ 15,690	
P127	Bobwhite Dr	South	George Williams Way	Lake Alvamar Dr	Collector	6	5	6	\$ 90,628	
P128	Harvard Rd	North	Kasold Dr	Lawrence Ave	Collector	6	6	7	\$ 74,974	Selected
P133	E 17th St	South	Irving Dr	Lindenwood Ln	Street	6	4	4	\$ 65,181	
P235	Kasold Drive Crossing		Riverview Rd		Arterial	6	9	9	\$ -	
P024	W 19th St	North	Maine St	Maine St	Arterial	6	8	10		Complete
P116	Rockfence Pl	West	Riverview Rd	Tomahawk Dr	Street	6	4	6		

P121	Princeton Blvd	North	340 LF East of Yorkshire Dr	240 LF West of Kingston Dr	Collector	6				
P034	Kasold Dr	East	Trail Rd	Tomahawk Dr	Arterial	5	10	10	\$ 258,196	
P153	Rockledge Rd	South	East of Country Club Ter	McDonald Dr	Collector	5	7	6	\$ 39,075	
P165	E 25th Ter	South	East of Haskell Ave		Collector	5	6	5	\$ 17,734	
P169	W 18th St	South	Wakarusa Dr	Corporate Centre Dr	Collector	5	5	5	\$ 43,228	
P170	W 18th St	South	East of Research Park Dr		Collector	5	5	5	\$ 17,989	
P173	Lyon St	North	N 3rd St	N 5th St	Collector	5	6	6	\$ 144,875	
P177	Locust St	North	N 8th St	N 9th St	Collector	5	5	7	\$ 103,738	
P191	Branchwood Dr	West	Stoneridge Dr	Stonecreek Dr	Collector	5	5	5	\$ 147,367	
P196	W 4th St	North	McDonald Dr	Northwood Ln	Collector	5	6	6	\$ 10,863	
P199	Eisenhower Dr	West	Eisenhower Ter	Campbell Pl	Collector	5	5	5	\$ 152,553	
P202	E 11th St	South	Haskell Ave	750 LF West of Haskell	Collector	5	5	5	\$ 40,312	
P205	North St	North	N 3rd St	N 7th St	Collector	5	7	6	\$ 175,175	
P206	North St	South	N 3rd St	N 7th St	Collector	5	7	6	\$ 514,066	
P207	Lyon St	South	N 7th St	N 9th St	Collector	5	5	5	\$ 186,486	
P208	Lyon St	North	450 LF West of N 8th St	N 9th St	Collector	5	5	5	\$ 129,554	
P209	N 9th St	East	Lyon St	Elm St	Collector	5	5	5	\$ 118,691	
P210	N 9th St	West	Lyon St	Elm St	Collector	5	5	5	\$ 327,797	
P215	W 25th St	South	Ousdahl Rd	Cedarwood Ave	Collector	5	9	8	\$ 163,601	
P219	Princeton Blvd	South	Providence Rd	Iowa St	Collector	5	8	8	\$ 70,051	
P222	E 11th St	South	E 11th St	East City Limits	Collector	5	5	5	\$ 97,815	
P223	E 11th St	North	E 11th St	East City Limits	Collector	5	5	5	\$ 349,789	
P225	Harper St	East	E 15th St	E 17th St	Collector	5	6	6	\$ 100,518	
P230	Barker Ave	East	W 19th St	E 23rd St	Collector	5	6	8	\$ 161,012	
P152	Rockledge Rd	South	East of Country Club Ter		Collector	5	6	6		
P168	Overland Dr	North	George Williams Way	Chimney Rocks Cir	Collector	5	5	5		Complete
P200	Dole Dr	West	Wakarusa Dr	Earhart Cir	Collector	5	5	5		
P201	Dole Dr	West	North of Earhart Cir		Collector	5	5	5		
P228	W 25th St	North	Ousdahl Rd	Cedarwood Ave	Collector	5				
P017	N Kasold Dr	East	Tomahawk Dr	Creekwood Dr	Arterial	4	8	9	\$ 953,579	
P046	N Iowa St	West	Packer Rd	Lakeview Rd	Arterial	4	5	5	\$ 57,292	
P013	Kasold Dr	East	Yale Rd	W 14th St	Arterial	4	11	10		
P022	E 1000 Rd	East	Wakarusa Dr	City Limits	Arterial	4	5	5		Selected
P023	E 1000 Rd	West	Wakarusa Dr	City Limits	Arterial	4	5	5		Selected
P036	Wakarusa Dr	South	East of Queens Rd		Arterial	4	5	5		
P042	Wakarusa Dr	North	East of Queens Rd		Arterial	4	5	5		Complete
P171	Bobwhite Dr	South/East	Lake Alvamar Dr	Bob Billings Pkwl	Collector	3	5	7	\$ 118,287	
P233	Inverness Dr	East	Carmel Dr	2012 Inverness Dr	Collector	3	5	6	\$ 323,841	
P220	Queens Rd	West	W 6th St	North City Limits	Collector	3	6	6		Selected
P221	Queens Rd	East	W 6th St	North City Limits	Collector	3	5	5		Selected
P242	E 15th St	South	New Jersey	240 LF W of Hanscom St	Collector		10	11	\$ 70,007	Complete

From: [Michael Kelly](#)
To: [Charles Soules](#); [Jessica Mortinger](#)
Subject: Transportation Policy Review: ADA Ramp Prioritization
Date: Monday, August 5, 2019 4:29:49 PM

Hi Chuck-

I've got comments on the following table in the existing policy:

Destinations: schools & university buildings, public transit stops, neighborhood/ community retail, parks/public attractions, public/government institution, non profits, daycare & health clinic	
1/8 mile	3
1/4 mile	2
1/2 mile	1

I do not agree that all of these facility types are equally important for pedestrians with mobility challenges. More emphasis needs to go into the challenges of the pedestrian with diminished capabilities and less into the distance that a normally abled pedestrian would traverse. Scoring all facility types equally by a distance criterion alone leads to some intransitive logic. An ADA access route for a physical therapy clinic is not going to be 1/4 mile long or even 1/8 mile long. However, a Safe Route to an elementary School can easily exceed 1/2 mile.

I would rank (assign ordinal priority) these facility types in this priority order:

- Medical facilities that offer emergency care, physical therapy or orthopedic diagnosis and treatment
- Other types of medical treatment facilities such as primary care, urgent care, dental, and pharmacy
- Elementary schools (these are the youngest normally unsupervised pedestrians)
- Middle schools
- High schools
- Public transit stops
- Post-secondary schools
- Judicial and law enforcement buildings with public access
- Daycare facilities and social service agencies
- Other government buildings with public access mission
- Recreational facilities
- Retail facilities

If I were to attempt a cardinal utility priority ranking, the top category (orthopedic and physical therapy) would get 3x priority points a primary care clinic and elementary schools would get twice as many as other schools.

Looking at the graphics in the package for the Commission, it does not seem as if the contour boundaries were taken from the school property boundaries, at least in the case of Langston Hughes ES. I'll see if I can make time to come down to meet with the GIS analyst.

Please ask the commission to consider my opinions.

Thanks,

Mike Kelly

LAWRENCE TRANSPORTATION COMMISSION AGENDA ITEM



City of Lawrence

Department:	Municipal Services & Operations	Transportation Commission Meeting Date:	September 9, 2019
Staff Contact:	Charles Soules, Assistant Director		

Recommendations/Options/Action Requested:

Consider recommending to the City Commission approval of Ordinance establishing the Lawrence Multi-Modal Transportation Commission

Consider recommending to the City Commission approval of Bylaws of the Lawrence Multi-Modal Transportation Commission

At the meeting on April 1, 2019 the Transportation Commission reviewed the Commissions establishing Resolution 7172. The recommendation to the City Commission included a name change to the Lawrence Multi-Modal Transportation Commission and that all the appointments (members) be made by the Mayor and at-large.

Those changes are reflected in the new Draft Ordinance.

Executive Summary

Since we are changing the makeup of the membership all positions will need to be re-appointed. It is the intent that the current members be re-appointed to the remainder of their term, but the Mayor will make that determination.

With the changes to the ordinance the By-laws need to reflect those same items. The City has adopted a standard form advisory Boards/ Commissions By-laws.

Strategic Plan Critical Success Factor	safe healthy and welcoming neighborhoods
---	--

Fiscal Impact (Amount/Source):	Fiscal impact to City is \$0.
---------------------------------------	-------------------------------

Attachments:	Draft Ord Draft Bylaws Res 7172 TC bylaws MTC appointments
---------------------	--

Previous Agenda Items: [April 1, 2019](#)

Reviewed By: (for CMO use only)	<input type="checkbox"/> TM
	<input type="checkbox"/> DS
	<input type="checkbox"/> CT
	<input type="checkbox"/> BM

**A RESOLUTION OF THE CITY OF LAWRENCE, KANSAS, ESTABLISHING THE
LAWRENCE TRANSPORTATION COMMISSION.**

BE IT RESOLVED BY THE GOVERNING BODY OF THE CITY OF LAWRENCE, KANSAS:

SECTION 1. PURPOSE.

In order to advance the health, safety, and welfare of all residents of the City of Lawrence, the Governing Body encourages strong multimodal transportation planning. Multimodal transportation planning facilitates access to transportation for **all** residents of the community and has been shown to be an effective tool in reducing energy dependency and traffic congestion. To those ends, to assist it in multimodal transportation planning, the Governing Body finds that it is in the best interest of all residents of the City of Lawrence to establish the Lawrence Transportation Commission.

SECTION 2. LAWRENCE TRANSPORTATION COMMISSION; ESTABLISHMENT; MEMBERSHIP; TERMS OF OFFICE; APPOINTMENT OF CHAIR.

(a) There is hereby established the Lawrence Transportation Commission ("Commission"). The Commission shall be composed of nine members. ^[1]

(1) The Mayor, with approval of the Governing Body, shall appoint seven members to the Commission, all of whom shall be residents of the City. The Mayor's appointees should include the following:

(A) one person representing local businesses;

(B) one person representing bicyclists;

(C) one person representing pedestrians;

(D) one person representing the Public Transit Advisory Committee;

(E) one person representing the Lawrence-Douglas County Health Department;

(F) one person, who shall have a background in planning or engineering, *e.g.*, architecture, civil engineering, landscape architecture, city planning, or the like; and

(G) one person who has a demonstrated interest, knowledge, or training in fields closely related to multi-modal transportation planning and engineering, such as a health profession, landscape architecture, city planning, urban design, geography, or the like.

(2) With the consent of its governing body, the Lawrence Unified School District No. 497 School Board shall appoint one member to represent its interests.

(3) The University of Kansas shall appoint one student to represent its interests.

(b) Members of the Commission shall serve three (3) year terms, except when appointed to complete an unexpired term. As established by the bylaws, the terms of Commission members shall be staggered so that no more than one-third of the Board's terms shall expire each year. No member shall serve more than two consecutive full three-year terms. Terms of less than three years shall not count toward the term limits. All members of the Board shall serve without compensation.

(c) The Commission shall elect annually a member of the Commission to serve as Chair, who shall preside at meetings.

(d) The Commission shall elect annually a member of the Commission to serve as Vice-chair, who shall preside at meetings in the absence of the Chair.

SECTION 3. SAME; VACANCIES.
Vacancies on the Commission shall be filled by the party who appointed the member vacating the position. Such vacancies shall be filled as soon as practicable.

SECTION 4. SAME; BYLAWS AND MEETINGS.
The Commission shall adopt bylaws governing the procedures to be used by the Commission. The bylaws shall establish specific duties and responsibilities of the Chair and Vice-chair, the time and place for meetings (at least once per month), rules of order, and other rules governing procedures and operations of the Commission, including procedures for amending the bylaws.

SECTION 5. QUORUM.
Except as otherwise provided in Footnote 1 to Section 2(a), *supra*, a quorum shall consist of five (5) members of the Commission. No official business of the Commission may be conducted without a quorum present.

SECTION 6. SAME; CONFLICTS OF INTEREST
All Commission members shall, by abstention, refrain from participating in the decision-making process, including discussing and voting, on any item for which he or she, his or her employer, or the entity which he or she is representing appears before the Board and would receive direct financial benefit if the item was to be approved by the Governing Body.

SECTION 7. SAME; MINUTES.
The Commission shall prepare and approve minutes of its meetings and shall forward the same to the Governing Body.

SECTION 8. SAME; OPEN MEETINGS AND OPEN RECORDS.
All meetings of the Commission shall be held in compliance with the Kansas Open Meetings Act of 1972, codified as amended at K.S.A. 75-4317 *et seq.*, and its records shall be subject to the Kansas Open Records Act of 1984, codified as amended at K.S.A. 45-215 *et seq.*

SECTION 9. SAME; RESPONSIBILITIES.
The Commission shall operate as an advisory board to the Governing Body on all matters relating to multimodal transportation planning and related transportation decision-making. The Commission shall have the following responsibilities:

- (a) To make recommendations to the Governing Body regarding implementation of its Complete Streets policy;
- (b) To make recommendations to the Governing Body regarding the priority, location, and design of transportation facilities;
- (c) To make recommendations to the Governing Body regarding the expenditure of capital funds for transportation-related projects and programs;
- (d) To make recommendations to the Governing Body regarding expenditures of funds for the repair and maintenance of transportation projects and programs;
- (e) To make recommendations to the Governing Body regarding ordinances, policies, and programs regarding transportation planning, transportation, and transportation safety; and
- (f) To perform other specific functions and duties and to make recommendations on other matters, as directed by the Governing Body from time to time.

SECTION 10. REPEAL.
Resolution No. 2033 and Resolution No. 4346, establishing and redefining the Traffic Safety Commission, and Resolution No. 6874, establishing the Lawrence-Douglas County Bicycle Advisory Committee, are hereby repealed in their entirety, it being the intent of the Governing Body that the terms of this Resolution supersede the terms of those resolutions in their entirety.

SECTION 11. EFFECTIVE DATE.
This Resolution shall be in full force and effect from and after January 1, 2017.

ADOPTED by the Governing Body of the City of Lawrence, Kansas, this 1st day of November, 2016.

APPROVED:

Mike Amyx
Mayor

ATTEST:

Sherri Riedemann
City Clerk

APPROVED AS TO FORM:

Toni R. Wheeler
City Attorney

[\[11\]](#) For ease of transition, temporarily, for a period of one year, commencing January 1, 2017, and ending December 31, 2017, the Commission shall be composed of eleven members: the nine members described in Section 2(a), *supra*, and two temporary positions. To fill the two temporary positions, the Mayor shall appoint one person from the current Traffic Safety Commission and one person from the current Lawrence-Douglas County Bicycle Advisory Committee. For that one year, the Commission will operate with eleven (11) members and the members filling the two temporary positions shall be accorded all rights granted to members of the Commission, including the right to vote and the right to serve as Chair or Vice-chair. Also, during that one year, a quorum under Section 5, *supra*, shall consist of six members instead of five. The two temporary positions and the terms of the members filling those temporary positions shall terminate December 31, 2017, and thereafter the Commission shall operate with nine members as described in Section 2(a), *supra*.

ORDINANCE NO. _____

**AN ORDINANCE OF THE CITY OF LAWRENCE, KANSAS,
ESTABLISHING THE LAWRENCE MULTI-MODAL
TRANSPORTATION COMMISSION.**

BE IT ORDAINED BY THE GOVERNING BODY OF THE CITY OF LAWRENCE, KANSAS:

SECTION 1. Resolution No. 7172 of the City of Lawrence, Kansas, is hereby repealed in its entirety, it being the intent of the Governing Body that Section 2 of this Ordinance supersede it.

SECTION 2. Chapter 1, Article 16 of the Code of the City of Lawrence, Kansas, 2018 Edition, and amendments thereto, is hereby enacted to read as follows:

1-1601 **PURPOSE.**

In order to advance the health, safety, and welfare of all residents of the City of Lawrence, the Governing Body encourages strong multi-modal transportation planning. Multi-modal transportation planning facilitates access to transportation for **all** residents of the community and has been shown to be an effective tool in reducing energy dependency and traffic congestion. To those ends, to assist it in multi-modal transportation planning, the Governing Body finds that it is in the best interest of all residents of the City of Lawrence to establish the Lawrence Multi-Modal Transportation Commission.

1-1602 **LAWRENCE MULTI-MODAL TRANSPORTATION COMMISSION;
ESTABLISHMENT; MEMBERSHIP; TERMS OF OFFICE; APPOINTMENT OF
CHAIR.**

- (a) There is hereby established the Lawrence Multi-Modal Transportation Commission ("Commission"). The Commission shall be composed of nine (9) members.

The Mayor, with approval of the Governing Body, shall appoint nine (9) members to the Commission, all of whom shall be residents of the City, with interest, experience and/or background in multi-modal Transportation.

- (b) Members of the Commission shall serve three (3) year terms, except when appointed to complete an unexpired term. As established by the bylaws, the terms of Commission members shall be staggered so that no more than one-third of the Commission's terms shall expire each year. No member shall serve more than two consecutive full three-year terms. Terms of less than three years shall not count toward the term limits. All members of the Commission shall serve without compensation.
- (c) The Commission shall elect annually a member of the Commission to serve as Chair, who shall preside at meetings.
- (d) The Commission shall elect annually a member of the Commission to serve as Vice-chair, who shall preside at meetings in the absence of the Chair.

1-1603 **SAME; VACANCIES.**

Vacancies on the Commission shall be filled by the Mayor with the approval of the Governing Body. Such vacancies shall be filled as soon as practicable.

1-1604 **SAME; BYLAWS AND MEETINGS.**

The Commission shall adopt bylaws governing the procedures to be used by the Commission. The bylaws shall establish specific duties and responsibilities of the Chair and Vice-chair, the time and place for meetings (at least once per month), rules of order, and other rules governing procedures and operations of the Commission, including procedures for amending the bylaws.

1-1605 **QUORUM.**

A quorum shall consist of five (5) members of the Commission. No official business of the Commission may be conducted without a quorum present.

1-1606 **SAME; CONFLICTS OF INTEREST**

All Commission members shall, by abstention, refrain from participating in the decision-making process, including discussing and voting, on any item for which he or she or his or her employer appears before the Commission and would receive direct financial benefit if the item was to be approved by the Governing Body.

1-1607 **SAME; MINUTES.**

The Commission shall prepare and approve minutes of its meetings and shall forward the same to the Governing Body.

1-1608 **SAME; OPEN MEETINGS AND OPEN RECORDS.**

All meetings of the Commission shall be held in compliance with the Kansas Open Meetings Act of 1972, codified as amended at K.S.A. 75-4317 *et seq.*, and its records shall be subject to the Kansas Open Records Act of 1984, codified as amended at K.S.A. 45-215 *et seq.*, and amendments thereto.

1-1609 **SAME; RESPONSIBILITIES.**

The Commission shall operate as an advisory board to the Governing Body on all matters relating to multimodal transportation planning and related transportation decision-making. The Commission shall have the following responsibilities:

- (a) To make recommendations to the Governing Body regarding implementation of its Complete Streets policy;
- (b) To make recommendations to the Governing Body regarding the priority, location, and design of transportation facilities;
- (c) To make recommendations to the Governing Body regarding the expenditure of capital funds for transportation-related projects and programs;
- (d) To make recommendations to the Governing Body regarding expenditures of funds for the repair and maintenance of transportation projects and programs;

- (e) To make recommendations to the Governing Body regarding ordinances, policies, and programs regarding transportation planning, transportation, and transportation safety; and
- (f) To perform other specific functions and duties and to make recommendations on other matters, as directed by the Governing Body from time to time.

SECTION 3. If any section, sentence, clause, or phrase of this ordinance is found to be unconstitutional or is otherwise held invalid by any court of competent jurisdiction, it shall not affect the validity of any remaining parts of this ordinance.

SECTION 4. This ordinance shall take effect and be in full force and effect following its adoption and publication as provided by law.

PASSED by the Governing Body of the City of Lawrence, Kansas, this ____ day of _____, 2019.

APPROVED:

Lisa Larsen
Mayor

ATTEST:

Sherri Riedemann
City Clerk

APPROVED AS TO FORM:

Toni R. Wheeler
City Attorney

BY-LAWS OF THE TRANSPORTATION COMMISSION LAWRENCE, KANSAS

ARTICLE I

Name and Membership

Section 1.1 Name. The name of this organization, established by Resolution No. 7172 by the Governing Body of the City of Lawrence, Kansas shall be the Lawrence Transportation Commission.

The term "Commission" in the following sections shall mean the Lawrence Transportation Commission. The term "Governing Body" shall mean the Lawrence City Commission of Lawrence, Kansas.

Section 1.2 Membership. Membership of the Commission shall be as established by the above cited resolution which specifies the number, method of appointment, and term of office of the Commissioners.

ARTICLE II

Authority and Purpose

Section 2.1 Authority. The function, powers, and duties of the Commission are as authorized by the resolution establishing the Commission. Actions of the Commission are in the nature of recommendations only and are subject to approval by the Governing Body. The Commission, however, adopts its own rules and policies for procedure, consistent with its powers.

Section 2.2 Commission Purpose. Through this Commission, the Governing Body is encouraging strong multimodal transportation planning in order to advance the health, safety, and welfare of all residents of the City of Lawrence. Commission activities include but are not limited to:

- a) Making recommendations to the Governing Body regarding implementation of its Complete Streets policy;
- b) Making recommendations to the Governing Body regarding the priority, location, and design of transportation facilities;
- c) Making recommendations to the Governing Body regarding the expenditure of capital funds for transportation-related projects and programs;
- d) Making recommendations to the Governing Body regarding expenditures of funds for the repair and maintenance of transportation projects and programs;

- e) Making recommendations to the Governing Body regarding ordinances, policies, and programs regarding transportation planning, transportation, and transportation safety; and
- f) Performing other specific functions and duties and to make recommendations on other matters, as directed by the Governing Body from time to time.

ARTICLE III Members

Section 3.1 Members.

The Commission shall be composed of nine members. ¹¹¹

- a) The Mayor of the City of Lawrence shall, with the consent of the Governing Body, appoint seven members to the Commission, all of whom shall be residents of the City. The mayor's appointees should include the following:
 - One (1) person representing local businesses;
 - One (1) person representing bicyclists;
 - One (1) person representing pedestrians;
 - One (1) person representing the Public Transit Advisory Committee;
 - One (1) person representing the Lawrence-Douglas County Health Department;
 - One (1) person, who shall have a background in planning or engineering, e.g., architecture, civil engineering, landscape architecture, city planning, or the like; and
 - One (1) person who has a demonstrated interest, knowledge, or training in fields closely related to multi-modal transportation planning and engineering, such as a health profession, landscape architecture, city planning, urban design, geography, or the like.
- b) With the consent of its Governing Body, the Lawrence Unified School District No. 497 School Board shall appoint one member to represent its interests.
- c) The University of Kansas shall appoint one member to represent its interests.

- Section 3.2 Terms of Membership. Each Commission member shall serve a three (3) year term of office by the Governing Body, to take up duties in the month of January each year as vacancies occur. The terms of Commission members shall be staggered so that no more than one-third of the Board's terms shall expire each year. Vacancies created by resignation or other reason shall be filled as soon as possible for the unexpired term of the member being replaced. A mid-term appointment or election to complete an unexpired term of another Commission member shall not count as a complete term toward the term limit. No Commissioner shall serve more than two consecutive terms. There is no limit as to how many terms a person may serve in a lifetime. The Commission may recommend persons to the Governing Body for consideration as new members.
- Section 3.3 Attendance. In the event a member accrues more than four (4) absences in any Commission year, the Commission may recommend to the Governing Body the removal of the Commissioner from office and also request the Governing Body to appoint a new member.
- Section 3.4 Resignation and Appointment Procedures. Upon the voluntary or involuntary resignation of a Commission member, the secretary shall notify the Mayor of the resignation and shall request that a replacement member be appointed. Whenever possible, the Mayor shall be notified at least two months in advance of such vacancy.

ARTICLE IV Officers and Committees

- Section 4.1 Officers. The officers of the Commission shall be a chairperson, a vice-chairperson, and a secretary. The chairperson and vice-chairperson shall be elected by the Commission at its regular meeting in January of each year. Their term of office shall be one (1) year. No person may serve in the same office for two (2) consecutive terms. A member of the Lawrence Public Works Department or other designee of the Lawrence City Manager shall serve as Commission Secretary.
- Section 4.2 Chairperson. The chairperson shall preside at all meetings of the Commission unless the chairperson designates someone to preside in their stead. The chairperson shall perform all the duties assigned to their office as provided herein and by the Governing Body and shall have such usual powers of supervision and management as pertain to the office of chairperson.

Section 4.3 Duties of the Chair. In addition, the chairperson duties include but are not limited to the following:

- (a) Review recommendations made by the Commission at its monthly meeting and assist the City staff in preparing a document for submission to the Governing Body.
- (b) Represent the Commission before the Governing Body and at other meetings as required.
- (c) Preside over Commission meetings and establish time limitations for public hearing items.

In the absence of the Chair and Vice-Chair, the Commission shall call for the election of a temporary Chair to preside over the meeting. This temporary Chair shall run the meeting until either the elected Chair or Vice-Chair arrives. Upon the arrival of the Chair, or Vice Chair, the temporary Chair shall relinquish the Chair duties upon conclusion of the business item immediately before the Commission.

Section 4.5 Vice-Chairperson. The vice-chairperson shall act as chairperson in the absence of the chairperson. In the event the office of chairperson becomes vacant, the vice-chairperson shall succeed to that office for the unexpired term and the Commission shall select a new vice-chairperson for the unexpired term.

Section 4.6 Secretary. A member of the Lawrence Public Works Department or other designee of the Lawrence City Manager shall serve as Commission Secretary. The secretary shall prepare the agenda and the order of business for each regular meeting in consultation with the chairperson. The secretary shall keep the Commission informed on all communications. The secretary shall record the minutes of all meetings and shall provide copies to all members of the Commission. Furthermore, the secretary will act as a liaison between the various local governments and the Commission.

Between meetings of the Commission, the secretary will be available to provide information on matters which come or have come before the Commission. The secretary shall notify the Mayor when a position on the Commission becomes vacant. The secretary is responsible for orientation of new members of the Commission.

Section 4.7 Committees. Upon a majority vote of the Commission, committees may be appointed as necessary.

ARTICLE V
Meetings

- Section 5.1 Regular meetings. Regular meetings of the Commission shall be held on the first Monday of each month, unless otherwise specified. These meetings shall be held at such time and place as designated by a majority of the entire Commission and with appropriate notice to each Commissioner. The meeting place for all Commission meetings shall be accessible to individuals with disabilities. The Commission secretary shall give members notice of regular meetings not less than seven (7) calendar days prior to the meeting.
- Section 5.2 Special meetings. Special meetings may be called by the chairperson and shall be called by the chairperson if requested in writing and signed by a majority of currently appointed Commission members. Notice of special meetings shall be given by the Secretary not less than seven (7) days prior to the meeting. The notice shall state the purpose and time and place of the meeting. Notice may be by telephone or mail. In the event that the caller of the special meeting wishes to cancel or change the meeting time, notice of such cancellation or change shall be made as soon as practical.
- Section 5.3 Agenda. There shall be an official agenda for every regular meeting of the Commission, which shall determine the order of business conducted at the meeting. The Commission secretary in consultation with the chairperson shall create and distribute an agenda for each Commission meeting. Meeting agendas sent to Commission members shall include appropriate materials (e.g., staff reports, draft documents, etc.). Regular meeting agendas shall be distributed electronically to Commission Members at least seven (7) days in advance of the meetings. The agenda packet shall be posted on the website at least seven (7) days prior to the meeting.
- Special Commission meeting agendas are restricted to the business designated in the call for the meeting.
- Section 5.4 Record of Proceedings. At all Commission meetings the secretary shall record a roll of members, minutes of proceedings, and votes. All approvals of items by the Commission shall be noted by the secretary and placed in meeting minutes. The secretary shall record the minutes of each meeting as a matter of public record and should present such minutes to the Commission for approval at the following meeting. Minutes shall be reviewed by all Commission members and approved by a majority vote of

the members present. Approved minutes shall be available for public inspection on the City website.

The secretary will prepare Commission approved items for submission to the Governing Body.

ARTICLE VI Conduct of Meetings

Section 6.1 Conduct of Meetings. Commission members are subject to all rules and regulations as established by the State of Kansas, City of Lawrence, Douglas County, and other governmental jurisdictions and agencies having legal authority to regulate public officials' behavior and conduct. The meetings of the Commission will be held in accordance with the Kansas Open Meetings Act of 1972, codified as amended at K.S.A. 75-4316 et seq. (KOMA).

Meetings shall be conducted according to Robert's Rules of Order in all cases where they are applicable and not inconsistent with these by-laws.

Section 6.2 Order of Business. The order of business shall be as follows: Attendance; Approval of minutes; Public Hearing Items; Staff and Committee reports; Communications; Other Matters; General Public Comments; and Adjournment. Any matter or subject not appearing on the agenda shall also be considered if a majority of the Commission members vote consideration. Approval of consideration shall be based on a finding that a review or presentation would be in the best interest of the general public and not contrary to the provisions of public notice. No item will be considered unless sufficient data and information are available for consideration before a vote is taken.

Section 6.3 Continuance. Any item may be continued upon written request by the applicant or recommendation of the Commission.

Section 6.4 Appearance before Commission. Petitioners or their representatives, members of the community at large, or individuals or their representatives who feel that they will be affected by any action may appear before the Commission to present views and statements either for or against agenda items. Personal appearance before the Commission is recommended but written communication may be presented. The chairperson may, at their discretion, limit the length of presentation or discussion to insure the orderly conduct of Commission business, provided that the decision of the chairperson may be overridden by a majority of the Commission present.

Section 6.5 Motions. Motions before the Commission shall be restated by the Chair or a designated Commissioner or staff person before a vote is taken. Every motion on a substantive matter shall set forth reasons.

Section 6.6 Voting. Voting shall be by individual voice ballot on each item and shall be tallied by the Chairperson and recorded by the secretary.

Each Commissioner should vote on every issue, but a Commissioner may abstain. Members wishing to abstain shall inform the Chair. Commissioners may only abstain from voting due to a conflict of interest of other good reason stated to the other Commission members and accepted by them. Members must be physically present at the meeting to vote unless the Chair allows a phone/computer connection to stand in place of their physical attendance. Proxy voting is not allowed at Commission meetings.

Section 6.7 Quorum. A quorum shall consist of a majority of currently appointed Commission members. If a quorum is not reached within fifteen minutes of the scheduled meeting time, those members present may, by unanimous agreement, select to continue the meeting as an informational meeting to discuss items on the agenda that do not require approval or action by the Commission. The meeting may be rescheduled or canceled based on the time sensitivity of the material before the Commission. If the meeting is rescheduled, absent members shall be notified by the chairperson or designated representative.

Section 6.8 Conflicts of Interest. No member of the Commission shall participate in, discuss, or vote on a matter in which they have a substantial interest as defined by K.S.A.75-4301 et seq.

Should any member have such a substantial interest on a matter coming before the Commission or its sub-committees, the Chairperson shall declare an abstention for each affected Commission member for that item on the agenda.

Section 6.9. Public Representation. No Commission member may use their title or office in public representations unless authorized to do so by a simple majority vote of the Transportation Commission.

ARTICLE VII Matters to be Considered

Section 7.1 Items to be Considered. The Commission shall consider matters relating to the safe and expeditious vehicular, bicycle, and pedestrian traffic flow within the jurisdiction of the City. The Commission shall not consider any proposal, request, or application, which is contrary to or in conflict with the provisions of the Standard Traffic Ordinances for Kansas Cities, as amended, or contrary to or in conflict with existing City ordinances. Further, the normal Commission recommendations should be in substantial conformity with procedures and warrants outlined in the Manual of Uniform Traffic Control Devices, AASHTO and/or NACTO.

ARTICLE VIII Amendments

Section 8.1 Amendments. These bylaws may be amended by a majority vote of the Commission at any regular meeting, provided the members have been notified one (1) month in advance or such notice has been waived by all Commissioners, and the proposed amendment has been placed on the agenda.

ARTICLE IX Effective Date

Section 9.1 Effective Date.

The above and foregoing bylaws are hereby adopted and become effective as the bylaws of the Lawrence Transportation Commission on _____.

^[1] For ease of transition, temporarily, for a period of one year, commencing January 1, 2017, and ending December 31, 2017, the Commission shall be composed of eleven members: the nine members described in Section 3.1, *supra*, and two temporary positions. To fill the two temporary positions, the Mayor shall appoint one person from the current Traffic Safety Commission and one person from the current Lawrence-Douglas County Bicycle Advisory Committee. For that one year, the Commission will operate with eleven (11) members and the members filling the two temporary positions shall be accorded all rights granted to members of the Commission, including the right to vote and the right to serve as Chair or Vice-chair. Also, during that one year, a quorum under Section 6.7, *supra*, shall consist of six members instead of five. The two temporary positions and the terms of the members filling those temporary positions shall terminate December 31, 2017, and thereafter the Commission shall operate with nine members as described in Section 3.1, *supra*.

City of Lawrence, Kansas

Multi – Modal Transportation Commission

Bylaws

Article I

Purpose

- Section 1. The purpose of the Multi-Modal Transportation Commission is to advise the Governing Body of the City of Lawrence, Kansas, regarding issues affecting transportation including planning, programs, safety, priorities, design and expenditure of funds

Article II

Membership

- Section 1. The Board shall be composed of **nine (9)** voting Members.
- Section 2. The Mayor shall, with the consent of the Governing Body, appoint Members to the Board.
- Section 3. A Board Member shall, at all times be a resident of Lawrence, Kansas. However, a Board Member may reside outside the city limits of Lawrence, Kansas, if and only if (a) the Member is a resident of Douglas County, Kansas, and (b) the Member owns a business that has its principal place of business located in Lawrence, Kansas. Once a Board Member ceases to have a residence in accordance with this Section, he or she must resign from the Board.
- Section 4. Other than the provisions set forth in Section 5, *infra*, governing initial terms, each Board Member shall serve a three-year term. A Board Member, appointed to fill an unexpired term, shall complete that unexpired term.
- Section 5. In order to stagger the expiration of terms, the initial terms for the following Members shall be as follows:
- | | |
|------------|--------------------|
| Position 1 | expires 12/31/2019 |
| Position 2 | expires 12/31/2019 |
| Position 3 | expires 12/31/2019 |
| Position 4 | expires 12/31/2020 |
| Position 5 | expires 12/31/2020 |
| Position 6 | expires 12/31/2020 |
| Position 7 | expires 12/31/2021 |

Position 8 expires 12/31/2021
Position 9 expires 12/31/2021

After the expiration of those initial terms, then each succeeding term shall be three years in accordance with Section 4, *supra*.

- Section 6. Each Member shall serve no more than two successive full terms. Completion of an unexpired term shall not count toward the term limit.

Article III

Officers and Staff Liaison

- Section 1. The elected officers of the Board shall be:
- a. Chair
 - b. Vice-chair
- Section 2. Terms of elected officers shall be one year commencing the date of the election and continuing until the succeeding year's election.
- Section 3. The Board shall elect officers at the first regularly scheduled meeting of each year.
- Section 4. In the event that the office of Chair becomes vacant, the Vice-chair shall succeed to that office for the unexpired term. In the event that the office of Vice-Chair becomes vacant, the Board shall, at the next regular meeting, elect a member to succeed to that office for the unexpired term.
- Section 5. The duties of elected officers shall be:
- a. Chair
 - (i) Shall preside at all Board meetings; and
 - (ii) Shall represent the Board, as necessary, at all City meetings.
 - b. Vice-chair
 - (i) Shall preside at Board meetings in the absence of the Chair; and

- (ii) Shall represent the Board in the absence of the Chair, as necessary, at all City meetings.

Section 6. The City Engineer or his or her designee, shall serve as staff liaison between the City and the Board. The staff liaison shall, in consultation with the Chair, prepare the agenda and order of business for each regular meeting. The staff liaison shall be responsible for recording the minutes of regular and special meetings of the Board. The staff liaison shall also keep the Board informed of all communications.

Article IV

Vacancies and Appointment Procedures

Section 1. Upon the vacancy of a position on the Board, the staff liaison shall notify the City Manager of the vacancy. The City Manager shall request that the Mayor appoint a replacement.

Section 2. Upon being notified by the City Manager of a vacancy of a position on the Board, the Mayor shall endeavor to nominate a replacement as soon as may be practicable.

Article V

Attendance

Section 1. Board Members are expected to attend all regular and special meetings of the Board. Without the attendance of its Members, the Board cannot conduct its business.

Section 2. A Board Member having four (4) or more unexcused absences or six (6) or more absences for any reason during one (1) calendar year shall be deemed by the Board to have involuntarily resigned his or her position. Failing to notify the Chair of an absence at least 24 hours prior to a scheduled meeting shall count as an unexcused absence. Attendance will be reviewed regularly to ensure compliance.

Article VI

Conduct

Section 1. Board Members are subject to all rules and regulations as established by the State of Kansas, City of Lawrence, and other governmental jurisdictions and agencies having legal authority to regulate public officials' behavior and conduct.

- Section 2. No Board Member may use his or her office in public representations unless authorized to do so by a simple majority vote of the Board.

Article VII

Meetings

- Section 1. The Board shall meet regularly at a date, time, and place as determined by a simple majority vote of the Members. The date, time, or place may be changed by a simple majority vote of the Members so long as ten days' notice is given to all Board Members. If circumstances warrant it, the Chair may cancel or postpone a regular or special meeting of the Board and, if necessary, set a new date, time, and place for the meeting.
- Section 2. Notice of regular meetings and agendas, if prepared, for regular meetings shall be transmitted to all Board Members at least one week prior to the meeting. Notice, agendas, minutes, and other materials may be delivered electronically.
- Section 3. The Chair may call a special meeting of the Board, provided that at least three full days' notice is given to all Board Members and to the media and the public *via* posting notice of the special meeting on the City website or via other means as available and as deemed appropriate by the Chair.

Article VIII

Quorum

- Section 1. **Five (5)** Members of the Board shall constitute a quorum. There must be a quorum present (in person or by teleconference) before the Board may conduct any official business. Informal consideration and discussions may occur in the absence of a quorum.

Article IX

Open Meetings and Open Records

- Section 1. All regular and special meetings of the Board shall be held in compliance with the Kansas Open Public Meetings Act of 1972, codified as amended at K.S.A. 75-4316 *et seq.* All records of the Board shall be subject to the provisions of the Kansas Open Records Act of 1984, codified as amended at K.S.A. 45-205 *et seq.*

Article X

Bylaws

- Section 1. The purpose of these bylaws is to establish rules governing the internal organization of the Board and its operational procedures.

- Section 2. These bylaws may be amended at any time by a simple majority vote of all current Members of the Board and approval by the Governing Body.
- Section 3. Amendment to these bylaws may be initiated at any time, but a proposed amendment must be placed on the agenda prior to a regular meeting before it may be considered by the Board.
- Section 4. Amendment to these bylaws shall take effect immediately after adoption unless otherwise stipulated in the amendment.

Multi-Modal Transportation Commission Appointment

- **Position 1:** [Erin Paden](#) - Bicyclist Representative
 - [785-766-1963](tel:785-766-1963)
 - 01/01/2017 to 12/31/2019
- **Position 2** [John Ziegelmeyer](#) - Local Business Representative
 - [785-843-4265](tel:785-843-4265)
 - 01/03/2017 to 12/31/2019
- **Position 3** [Ron May](#) - USD 497
 - [785-760-2199](tel:785-760-2199)
 - 01/01/2017 to 12/31/2019
- **Position 4** [Charlie Bryan](#) - Law/DGCO Health Dept. Representative
 - [785-218-7966](tel:785-218-7966)
 - 12/12/2017 to 12/31/2020
- **Position 5** [Donna Hultine](#) - University of Kansas
 - [785-864-7292](tel:785-864-7292)
 - 12/12/2017 to 12/31/2020
- **Position 6** [Kathryn Schartz](#) - Multi-Modal Transportation Planning/Engineering Representative
 - [785-760-4114](tel:785-760-4114)
 - 12/12/2017 to 12/31/2020
- **Position 7** [Carol Bowen](#) - Pedestrian Representative
 - [785-842-9082](tel:785-842-9082)
 - 12/04/2018 to 12/31/2021
- **Position 8** [Nick Kuzmyak](#) - PTAC Representative
 - [785-304-1483](tel:785-304-1483)
 - 12/04/2018 to 12/31/2021
- **Position 9** [Steve Evans](#) - Planning/Engineering Field Representative
 - [785-393-9597](tel:785-393-9597)
 - 10/09/2018 to 12/31/2021

2019 CITY OF LAWRENCE TRANSPORTATION COMMISSION CALENDAR

Study Sessions begin at 5:00PM Regular Meetings begin at 6:00PM		
January – No meeting	February 4	March 4
April 1	May 6	June 3
<u>Study Session:</u> <ul style="list-style-type: none"> Strategic Plan; CIP/budget process Receive update on Transit Hub <u>Regular Meeting:</u> <ul style="list-style-type: none"> Discussion on composition of Transportation Commission 	<u>Study Session:</u> <ul style="list-style-type: none"> Review Pedestrian Bicycle Issues Task Force Report <u>Regular Meeting:</u> <ul style="list-style-type: none"> Discussion on composition of Transportation Commission Recommendation on 2019 Neighborhood Traffic Management Program 	<u>Study Session:</u> <ul style="list-style-type: none"> Update on Safe Routes to School Plan School Area Traffic Control Policy Receive draft Lawrence Bike Plan <u>Regular Meeting:</u> <ul style="list-style-type: none"> Recommendation on 13th Street & 21st Street Bike Boulevard Concept Plan Recommendation on 2019 Bike/Ped Projects
July 1	August 5	September 9
<u>Study Session:</u> <ul style="list-style-type: none"> Non-motorized Project Prioritization <u>Regular Meeting:</u> <ul style="list-style-type: none"> 	<u>Study Session:</u> <ul style="list-style-type: none"> Information on regulations for electric vehicles. Receive request from VeoRide to amend contract for bike share to include e-scooters. <u>Regular Meeting:</u> <ul style="list-style-type: none"> Recommend approval of Lawrence Bike Plan Recommend approval of Non-motorized Project Prioritization 	<u>Study Session:</u> <ul style="list-style-type: none"> Transportation/Land-Use Relationship <u>Regular Meeting:</u> <ul style="list-style-type: none"> East 23rd Street Planning Study K-10 & 27th/Wakarusa Study (KDOT Presentation) Non-motorized Project Prioritization
October 7	November 4	December 2
<u>Study Session:</u> <ul style="list-style-type: none"> Update on sidewalk maintenance program <u>Regular Meeting:</u> <ul style="list-style-type: none"> Kasold – 22nd Street to Clinton Parkway E. 19th Street – Haskell to O’Connell design options 	<u>Study Session:</u> <ul style="list-style-type: none"> Update on Parking and Access revisions to Land Development Code <u>Regular Meeting:</u> <ul style="list-style-type: none"> 2020-2024 Bike/Ped Funding Plan 	<u>Study Session:</u> <ul style="list-style-type: none"> ADA Transition Plan update <u>Regular Meeting:</u> <ul style="list-style-type: none">
Future Study Session Topics:		
<ul style="list-style-type: none"> Downtown Master Plan parking/multi-modal transportation components City Comprehensive Plan and Transportation Plan Lawrence Loop – 8th Street to 11th Street and 29th Street Project STAR transition to LEED (Sustainability Coordinator) Distracted Driving Grant Opportunities 		
Future Regular Meeting Items:		
<ul style="list-style-type: none"> Crossing - 11th St & New Hampshire 		

Revised: 8/20/2019