



City of Lawrence

THE PEOPLE OF OAK HILL



E.S. Tucker
PHOTO.



Teaching with Oak Hill Cemetery

TABLE OF CONTENTS

Welcome

This lesson is part of a series of Kansas standards-based lessons developed to enable students to understand, summarize, and evaluate materials provided related to the history, design and development of Oak Hill Cemetery. Each lesson was designed to stand-alone, but they may be used in multiple combinations to suit the needs of the educator. Taken together they tell a rich history of Kansas and Oak Hill Cemetery. This series is inspired by the National Park Service Teaching with Historic Places standards.

In the "What is a Rural Cemetery?" lesson students will be asked to analyze and evaluate the similarities and differences between Oak Hill, Greenwood, and Mount Auburn Cemeteries. Using a step-by-step process, students will acquire historical thinking skills and learn to analyze and assess primary and secondary source materials. Through close reading and comparative analysis students will make logical inferences building on the central question "What is a Rural Cemetery?"

In the "Symbolism in the Cemetery" lesson students will analyze the symbology utilized on grave markers in Oak Hill Cemetery. Using a step-by-step process they will acquire historical thinking skills and learn to read the meaning of these commemorative graphical depictions.

In the "Civil War Veterans" lesson students will investigate the histories of Civil War Veterans buried at Oak Hill Cemetery. Using a step-by-step process, students will acquire historical thinking skills, work with and organize data, and learn to analyze and assess primary and secondary source materials. Lastly, students will research and produce a story covering a Civil War Veteran's history.

In the "People of Oak Hill" lesson students will explore the lives of notable Kansans buried at Oak Hill Cemetery. Using a step-by-step process, students will acquire historical thinking skills and will organize and analyze data. Lastly, students will develop and defend position statements and opinions about the importance of the contributions these Kansans have made to our society.

Acknowledgements

The authors thank the City of Lawrence and Lawrence Parks and Recreation for their support and assistance in developing these lesson plans. In particular, we thank Lynne Braddock Zollner and Mitch Young.

Additionally, we thank Mike Kelly, Amy Roust and John Nichols with Douglas County, Kansas. We are grateful to the helpful staff and valuable collections at the Spencer Research Library at the University of Kansas, the Kansas State Historic Society, and Monica Davis at the Watkins Museum of History/Douglas County Historical Society.

We would also like to acknowledge the following individuals that contributed to the understanding of Oak Hill Cemetery: Cathy Ambler and Katie Armitage.

*Lucinda Evans, Nathan McAlister, and TreanorHL.
September, 2016*

Cover photo credits:

West Entry of Oak Hill Cemetery from *Lawrence, Kansas: A Memorial Album*, E.S. Tucker, 1895
Company H Monument, Section 8, TreanorHL

About This Lesson:

1. Learning Activity
2. Kansas HGSS Standards Addressed
3. Materials
4. Number of Class Periods
5. Preparation for Lesson
6. Activity Background (For the Teacher)
7. Activity Steps
8. Lesson Extension

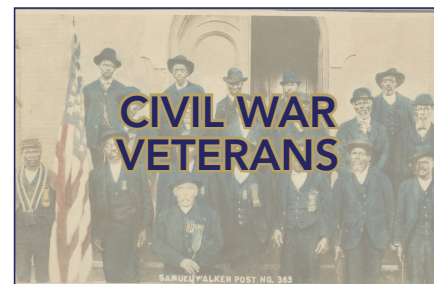
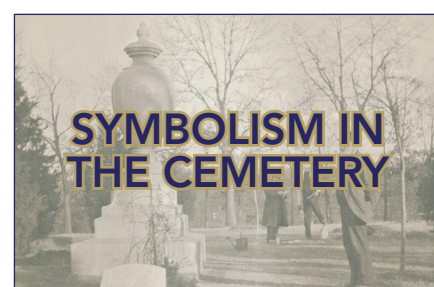
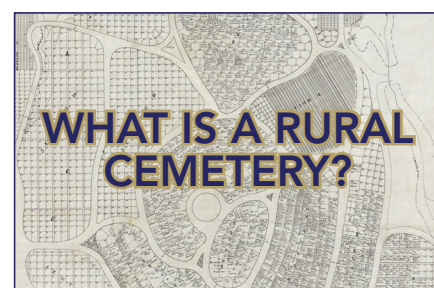
Handouts:

1. Notable Kansans Buried at Oak Hill
2. Lesser Known Notable Kansans Buried at Oak Hill
3. Section Map of Oak Hill Cemetery
4. Speech Graphic Organizer
5. Reflections

This publication has been financed in part with Federal funds from the National Park Service, a division of the United States Department of the Interior, and administered by the Kansas State Historical Society. The contents and opinions, however, do not necessarily reflect the view or policies of the United States Department of the Interior or the Kansas State Historical Society.

This program receives Federal funds from the National Parks Service. Regulations of the U. S. Department of the Interior strictly prohibit unlawful discrimination in departmental Federally Assisted Programs on the basis of race, color, national origin, age or handicap. Any person who believes he or she has been discriminated against in any program, activity or facility operated by a recipient of Federal assistance should write to: Office of Equal Opportunity, National Park Service, 1849 C Street, NW, Washington, DC 20240.

Lessons in
The Teaching with Oak Hill
Cemetery Unit



Lesson plan photo credits, top to bottom:
Company H Monument, Section 8, TreanorHL

*1913 Map of Oak Hill Cemetery,
City of Lawrence Parks and Recreation*

*Sexton McFarland with the Simmons
Family Urn in Section 8N, Douglas County
Historical Society, Watkins Community
Museum*

*GAR Samuel Walker Post 365, KansasMemory.org,
Kansas State Historical Society, Item 218628*



Wm. Allen White in front of the Emporia Gazette, KansasMemory.org, Kansas State Historic Society, Item 215327



West Entrance of Oak Hill Cemetery
Lawrence, Kansas: A Memorial Album
E.S. Tucker, 1895

The People of Oak Hill Cemetery

Learning Activity: What notables are buried at Oak Hill Cemetery and what contributions did they make to Kansas and the United States?

Kansas HGSS Standards Addressed:

- **Standard 1**—Choices have consequences

Standard 1.1 – The student will recognize and evaluate significant choices made by individuals, communities, states and nations that have impacted our lives and futures.

Standard 3.2 – The student will draw conclusions about significant beliefs, contributions and ideas, analyzing the origin and context under which these competing ideals were reached, and the multiple perspectives from which they come.

- **Standard 5**—Relationships among people, places, ideas and environments are dynamic

Standard 5.4 – The student will use his/her understanding of these dynamic relationships to create a personal, community, state, and/or national narrative.

Applicable The Kansas Journey (1st ed.) Chapters: All chapters

Materials:

1. Notable Kansas Buried at Oak Hill
2. Lesser Known Notable Kansans Buried at Oak Hill
3. Section Map of Oak Hill Cemetery
4. SPEECH Graphic Organizer
5. Reflections

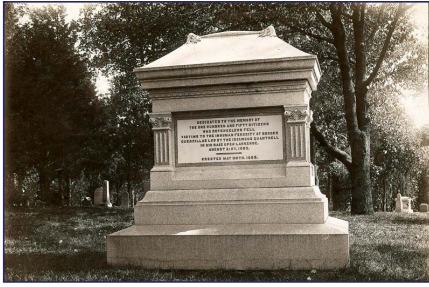
Number of Class Periods: 3-5

Preparation for Lesson:

The activities for this lesson include 3 handouts and 2 analysis sheets. Student groups will receive each handout (handout #2 is optional) and the analysis sheets. Familiarize yourself in advance with each of the handouts, secondary reading, and the analysis sheet.

Activity Background (For the Teacher):

Many notable people are buried at Oak Hill Cemetery. Famous writer and newspaperman William Allen White called it the “The Kansas Arlington” in an article published in *The Emporia Gazette* in 1942. Some of the people buried there are important to the local community, some are important to the history of Kansas as a state, and some are important to the United States on a national level. They made contributions to society, history, politics, economics, culture and the environment. Students will collect images of their cemetery markers and research whether their contributions are Social, Political, Economic, Environmental, Cultural, or Historical (SPEECH).



Monument to honor victims of Quantrill's Raid,
Oak Hill Cemetery Lawrence, KS
KansasMemory.org, Kansas State Historic Society,
Item 487

Activity Steps:

1. Using the attached list in Handouts #1, and #2 (optional) and #3 students will collect images of the monuments of notable people that are buried at Oak Hill Cemetery. This can be accomplished by visiting the cemetery in person or using findagrave.com to download pics of the cemetery markers.
2. After collecting the images students will do online and/or library research to find out what contributions these notables made to Kansas or to the United States.
3. Students will then organize the names/images into a graphic organizer (Handout #4) indicating whether the contributions were (S) social, (P) political, (E) economic, (E) environmental, (C) cultural or (H) historical - SPEECH.
4. Students are then put into 6 groups where as a team they will develop a public speech promoting one of the 6 SPEECH categories and the importance of the contributions made by the notable people that fall into that category. (Teachers put SPEECH letters in a hat for students or teachers to randomly draw a category).
5. Have each student in the group write 2 sentences to defend their category of SPEECH.
6. Speeches are given, limited to 5 minutes per team. Each student must speak their 2 sentences.
7. After the presentations students will then choose which group of contributions was the most important based on student presentations. Students will need to defend their choice with a short narrative about why they thought that particular category is more important using the names of the notables and what they accomplished as their evidence (Handout #5).

Sources:

Oak Hill Cemetery Website: <https://lawrenceks.org/lprd/parks/oakhillcemetery>
 Oak Hill Cemetery Section Map: <https://lawrenceks.org/lprd/parks/oakhillmap>
 Oak Hill Cemetery GIS Interactive Map: <http://gis.lawrenceks.org/flexviewers/cemetery/>
 Kansapedia: <http://www.kshs.org/kansapedia/topic/people>
 Kansas Historical Society: <http://www.kshs.org/>
 Kansas Memory: <http://www.kansasmemory.org/>
 Find A Grave: <http://www.findagrave.com/>
 KU History: <http://kuhistory.com>

Lesson Extensions:

1. Further research may be undertaken using the following resources:
 - a. OSMA Reading Room, Lawrence Public Library
 - b. Newspapers.com, available online via KSHS <http://www.kshs.org/p/kansas-digital-newspaper-program/16126>
 - c. KSHS Scholarly Publications: <http://kshs.org/p/kansas-history-a-journal-of-the-central-plains/12443>
 - d. Watkins Museum of History (Douglas County Historical Society) Research Room (by appointment)
 - e. Kansas Collection, Spencer Research Library, University of Kansas
2. Use in conjunction with other Oak Hill Cemetery lessons to identify other individuals that could be researched.
3. Local interest and history could also be used to create categories such as: merchants, teachers, professional services (doctors, lawyers, engineers, architects), ministers, politicians. Individuals contributing to local history would be identified using:
 - a. Lawrence: Douglas County Kansas, An Informal History by David Dary
 - b. Pictorial history of Lawrence, Douglas County, Kansas by David Dary
4. As a class create a theme and a set of criteria, that matches the theme, for a new set of Notable Kansans buried at Oak Hill Cemetery. Possible themes include, but are not limited to, Athletics, Music, Community Activism, Education, or Youth. Students should debate and discuss a chosen theme and criteria following the guidelines from the main lesson. Once completed students should use their online and other local resources to research their chosen Notables.

¹ "City of Lawrence, Kansas." Oak Hill Cemetery • City of Lawrence, Kansas. N.p., n.d. Web. 13 Aug. 2016.

Notable Kansans Buried at Oak Hill Cemetery - A.K.A "The Kansas Arlington"

Kansan

Marker Location in Oak Hill:



Dr. Forrest C. "Phog" Allen
Influential University of Kansas Coach

Section 1, Lot 16

Famous for (insert research results):

KansasMemory.org, Kansas State Historic Society, Item 229



Dr. Edgar H.S. Bailey
Chemist, professor, researcher

Section 13, Lot 64

Famous for (insert research results):

Photo Credit:
http://kuhistory.com/wp-content/uploads/2011/11/05211886_01ed.jpg

Notable Kansans Buried at Oak Hill Cemetery - A.K.A "The Kansas Arlington"

Marker Location in Oak Hill: **Kansan**

Section 5N, Lot 204 Justin De Witt Bowersock
US Congressman

Famous for (insert research results):

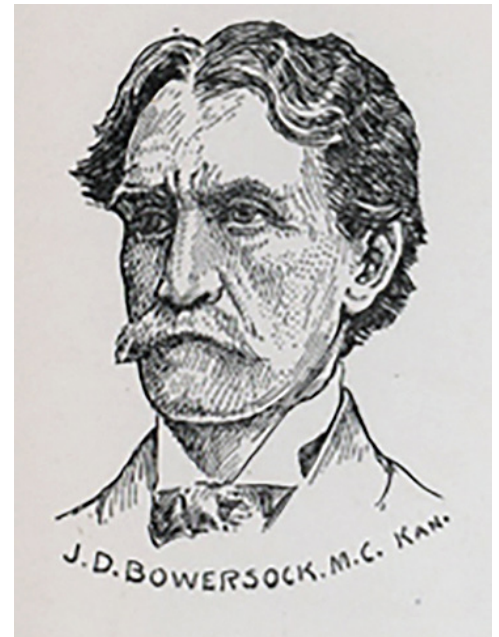


Photo Credit:
<http://bioguide.congress.gov/scripts/biodisplay.pl?index=B000693>

Section 13, Lot 177 Roland Boynton
Kansas Attorney General

Famous for (insert research results):



Photo Credit:
KansasMemory.org, Kansas State Historic Society,
Item 304317

Notable Kansans Buried at Oak Hill Cemetery - A.K.A "The Kansas Arlington"

Kansan

Marker Location in Oak Hill:

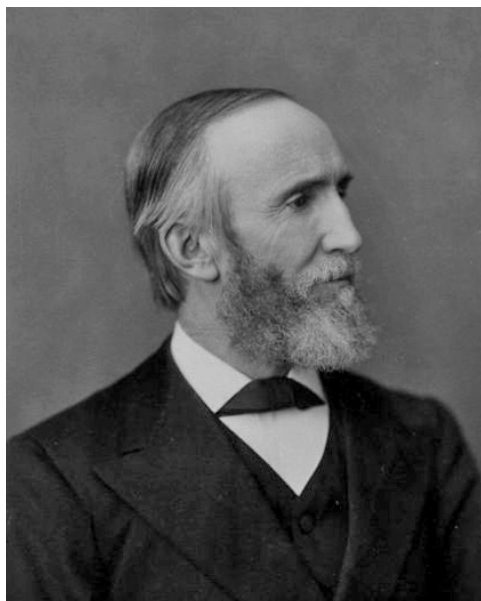


Alfred Bromelsick
Businessman and Benefactor
Lawrence, Kansas

Section 17, Lot 91

Famous for (insert research results):

Photo Credit:
<http://campbromelsick.com/History.html>



Reverend Richard Cordley
Author and Preacher

Section 2, Lot 123

Famous for (insert research results):

Photo Credit:
KansasMemory.org, Kansas State Historic Society,
Item 211279

Notable Kansans Buried at Oak Hill Cemetery - A.K.A "The Kansas Arlington"

Marker Location in Oak Hill: **Kansan**

Section 12, Lot 95

Lewis Lindsay Dyche
University of Kansas Professor, Explorer,
and Early Conservationist

Famous for (insert research results):



Photo Credit:
<http://loc.gov/pictures/resource/ggbain.03902/>

Section 6, Lot 99

James Emery
US District Attorney and Kansas Legislator

Famous for (insert research results):

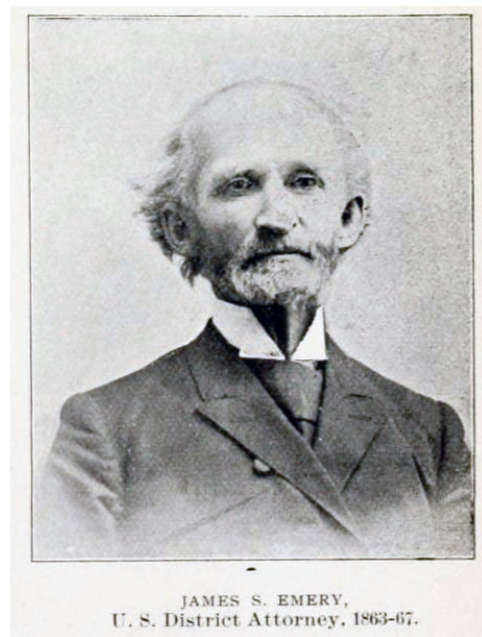
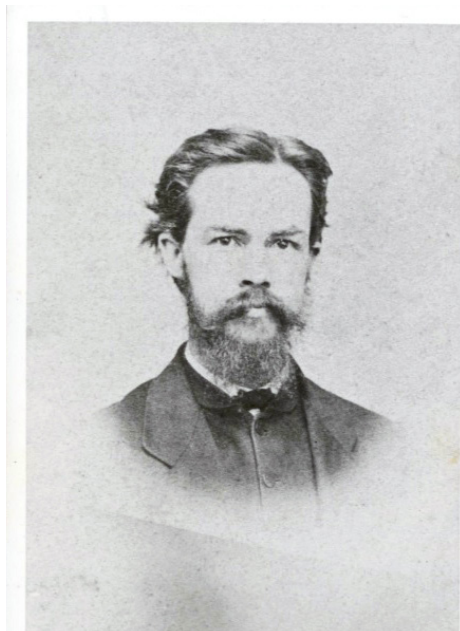


Photo Credit:
<http://www.rootsweb.ancestry.com/~ksdoughp/history/larencephotos.html>

Notable Kansans Buried at Oak Hill Cemetery - A.K.A "The Kansas Arlington"

Kansan

Marker Location in Oak Hill:



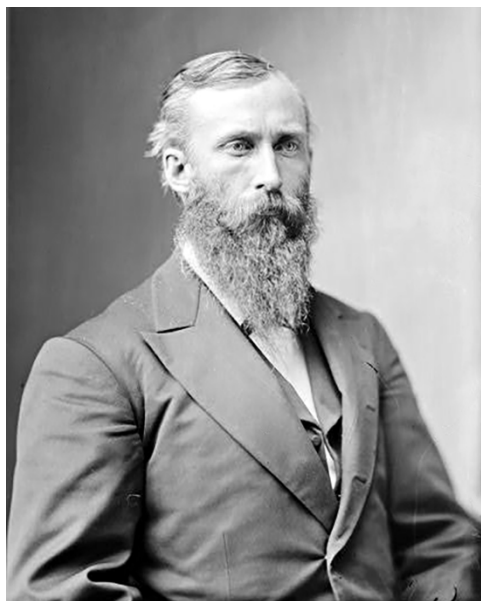
Edward P. Fitch
Businessman and Benefactor
Lawrence, Kansas

Section 2, Lot 31

Famous for (insert research results):

Photo Credit:

<http://www.civilwaronthewesternborder.org/content/edward-fitch>



Dudley Haskell
US Congressman, KS and
Kansas Congressman

Section 3, Lot 29

Famous for (insert research results):

Photo Credit:

<http://loc.gov/pictures/resource/cwpbh.05096/>

Notable Kansans Buried at Oak Hill Cemetery - A.K.A "The Kansas Arlington"

Marker Location in Oak Hill: **Kansan**

Section 3, Lot 29

John G. Haskell

Architect, designed portions of the Kansas State Capitol and many other public buildings in the state

Famous for (insert research results):

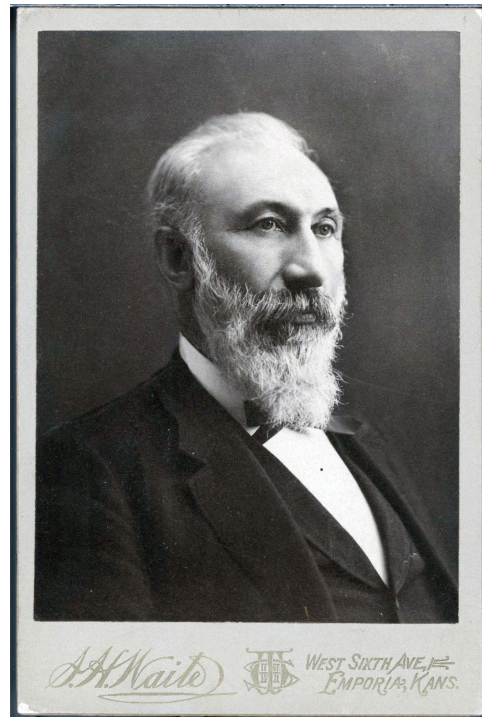


Photo Credit:
KansasMemory.org, Kansas State Historic Society,
Item 217845

Section 2, Lot 56/57

James (Jim) H. Lane

US District Attorney and Kansas Legislator

Famous for (insert research results):

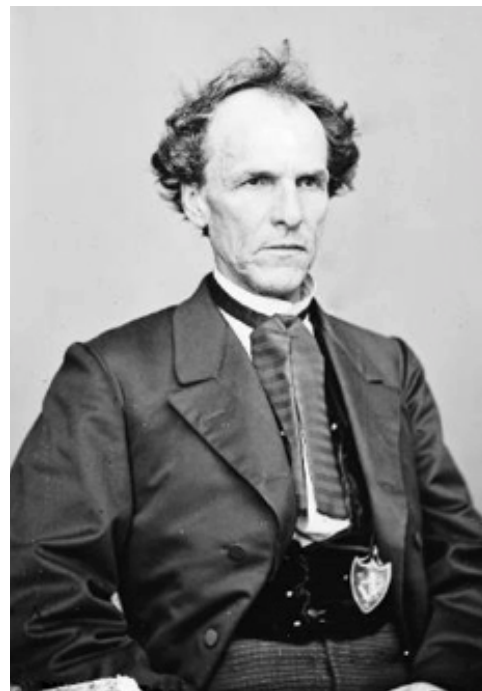


Photo Credit:
<http://loc.gov/pictures/resource/cwpbh.01175/>

Notable Kansans Buried at Oak Hill Cemetery - A.K.A "The Kansas Arlington"

Kansan

Marker Location in Oak Hill:

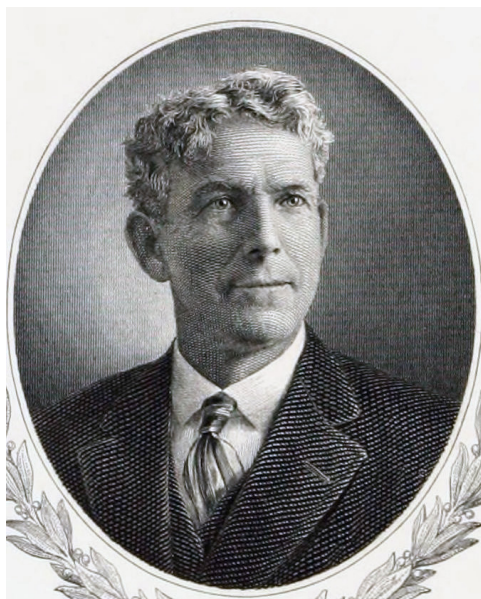


Josiah Miller
Kansas Newspaperman, Legislator, and
Judge

Section 2, Lot 51

Famous for (insert research results):

Photo Credit:
KansasMemory.org, Kansas State Historic Society,
Item 3777



Alexander C. Mitchell
Attorney, US Congressman

Section 8S, Lot 45

Famous for (insert research results):

Photo Credit:
[https://archive.org/stream/
alexanderclarkmi01unit#page/n7/](https://archive.org/stream/alexanderclarkmi01unit#page/n7/)

Notable Kansans Buried at Oak Hill Cemetery - A.K.A "The Kansas Arlington"

Marker Location in Oak Hill: **Kansan**

Section 85, Lot 117 Charles S. Robinson
1st Governor of Kansas

Famous for (insert research results):

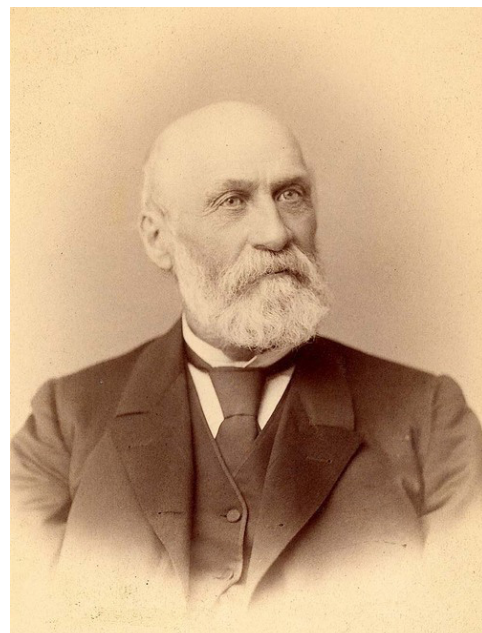
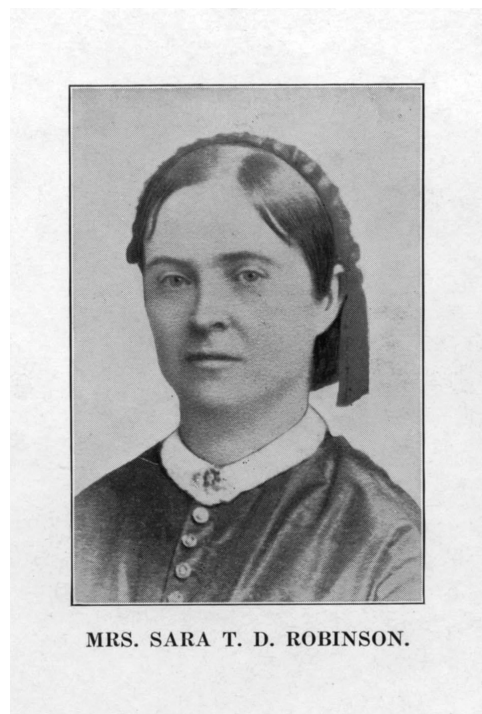


Photo Credit:
KansasMemory.org, Kansas State Historic Society,
Item 643

Section 285, Lot 117 Sarah Tappan Doolittle (Lawrence)
Robinson
wife of Charles, Author,
University of Kansas Benefactor

Famous for (insert research results):



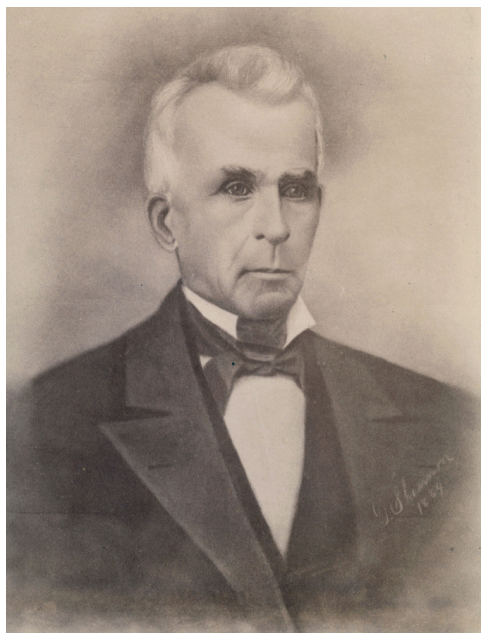
MRS. SARA T. D. ROBINSON.

Photo Credit:
KansasMemory.org, Kansas State Historic Society,
Item 209073

Notable Kansans Buried at Oak Hill Cemetery - A.K.A "The Kansas Arlington"

Kansan

Marker Location in Oak Hill:

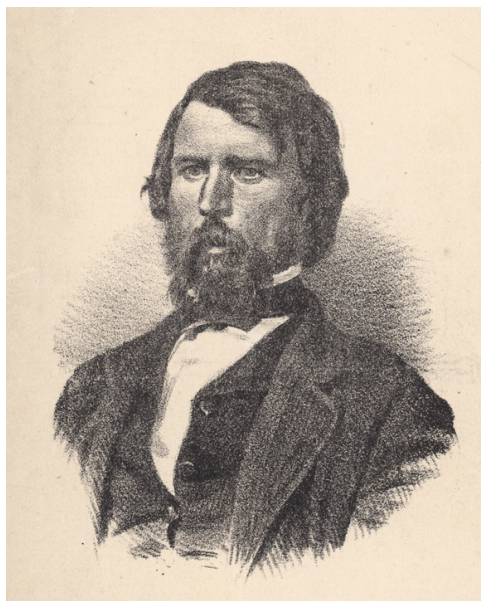


Wilson Shannon
Second Territorial Governor of Kansas

Section 2, Lot 65

Famous for (insert research results):

Photo Credit:
KansasMemory.org, Kansas State Historic Society,
Item 90660



John Speer
Member Territorial Legislature and
Newspaperman/Publisher

Section 2, Lot 1

Famous for (insert research results):

Photo Credit:
KansasMemory.org, Kansas State Historic Society,
Item 90672

Notable Kansans Buried at Oak Hill Cemetery - A.K.A "The Kansas Arlington"

Marker Location in Oak Hill: **Kansan**

Section 8S, Lot 188

Walter Roscoe Stubbs
Kansas Governor, Railroad Businessman,
and Teetotaler

Famous for (insert research results):



Photo Credit:
KansasMemory.org, Kansas State Historic Society,
Item 222251

Section 5, Lot 96

Lucy Hobbs Taylor
First female graduate of Dental College in
the United States and first female dentist
in Kansas

Famous for (insert research results):

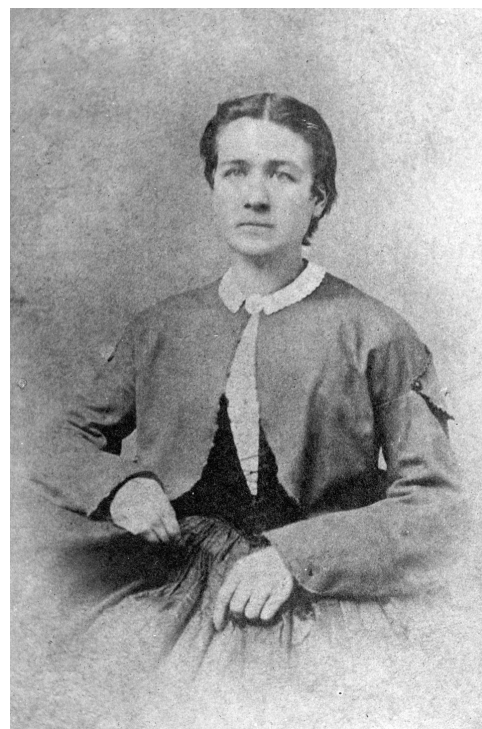


Photo Credit:
KansasMemory.org, Kansas State Historic Society,
Item 210193

Notable Kansans Buried at Oak Hill Cemetery - A.K.A "The Kansas Arlington"

Kansan

Marker Location in Oak Hill:



Solon Thacher
Delegate for Wyandotte Constitution,
and newspaperman

Section 2, Lot 104

Famous for (insert research results):

Photo Credit:
KansasMemory.org, Kansas State Historic Society,
Item 221497



John Palmer Usher
US Secretary of the Interior

Section 10, Mausoleum

Famous for (insert research results):

Photo Credit:
KansasMemory.org, Kansas State Historic Society,
Item 217928

Notable Kansans Buried at Oak Hill Cemetery - A.K.A "The Kansas Arlington"

Marker Location in Oak Hill: **Kansan**

**Section 12, Row A,
Grave 18/19**

George B. "Nash" Walker
Stage Performer and Author of the first
all African-American Broadway produc-
tion

Famous for (insert research results):



Photo Credit:
<http://digitalcollections.nypl.org/items/a172b880-0ac0-0132-e7e8-58d385a7b928>

Section 8N, Lot 234

Elizabeth Watkins
Banker, Philanthropist, City and University
of Kansas Benefactor

Famous for (insert research results):



Photo Credit:
<http://kuhistory.com/articles/kus-fairy-godmother/>

Notable Kansans Buried at Oak Hill Cemetery - A.K.A "The Kansas Arlington"

Kansan

Marker Location in Oak Hill:



Jabez B. Watkins
Banker

Section 8N, Lot 234

Famous for (insert research results):

Photo Credit:
http://www.watkinsmuseum.org/tour/images/02_watkins.jpg

OAK HILL CEMETERY: Lesser Known Notable Kansans Buried at Oak Hill

Kansan

Marker Location in Oak Hill:



Gabriel Gray
Baptist Minister, born into slavery

Section 1, Lot 47

Famous for (insert research results):
Note for researchers: See *Kansas History* Autumn 2008 and newspapers.com



Dr. Frederick D.G. Harvey
Physician in Lawrence area

Section 5, Lot 159

Famous for (insert research results):
Note for researchers: See *Kansas History* Autumn 2008 and newspapers.com

Photo Credit:
<http://www.lawrence.lib.ks.us/oralhistory/rbh.html>

OAK HILL CEMETERY: Lesser Known Notable Kansans Buried at Oak Hill

Marker Location in Oak Hill:

Section 8S - Monument
Section 14C, Lot 80

Corporal David Martin Horkmans
Posed for the Spanish-American War
Memorial

Famous for (insert research results):
Note for researchers: See newspapers.com



Photo Credit:
TreanorHL

Section 5, Lot 104
Original burial in Pauper Plot?

Charles Langston
Early Civil Rights Advocate and Grandfather of poet Langston Hughes

Famous for (insert research results):
Note for researchers: See *Kansas History* Autumn 2008 and newspapers.com



Photo Credit:
https://www.kshs.org/publicat/history/1999winter_sheridan.pdf

OAK HILL CEMETERY: Lesser Known Notable Kansans Buried at Oak Hill

Marker Location in Oak Hill:



Clair and Vivian Patee
Owners of early Motion Picture House

Section 10, Lot 21

Famous for (insert research results):

Note for researchers: See newspapers.com and may be useful to research the role of early movie theaters in the West or histories of early cinemas.

Photo Credit:



Minnie Scott
World War I Nurse

Section 12, Lot 172

Famous for (insert research results):

Note for researchers: See Watkins Museum of History and newspapers.com. It may be useful to research the role of women on the front lines during World War I and how Kansas women contributed to the war effort. The National WWI Museum in Kansas City may also be of assistance.

Photo Credit:

<http://image2.findagrave.com/cgi-bin/fg.cgi?page=pv&GRid=64730605&Plpi=38187076>

OAK HILL CEMETERY: Lesser Known Notable Kansans Buried at Oak Hill

Marker Location in Oak Hill:

Section 8S - Monument
Section 14C, Lot 80

Holland J. Wheeler Jr
Engineer for many public works throughout Lawrence, KS

Famous for (insert research results):

Note for researchers: See (Lawrence) City Council Meeting minutes, (Douglas) County Commission Meeting minutes, Kansas History newspapers.com. Holland Wheeler served multiple positions for the City and County and was responsible for the development of many public works and landscapes in Lawrence.

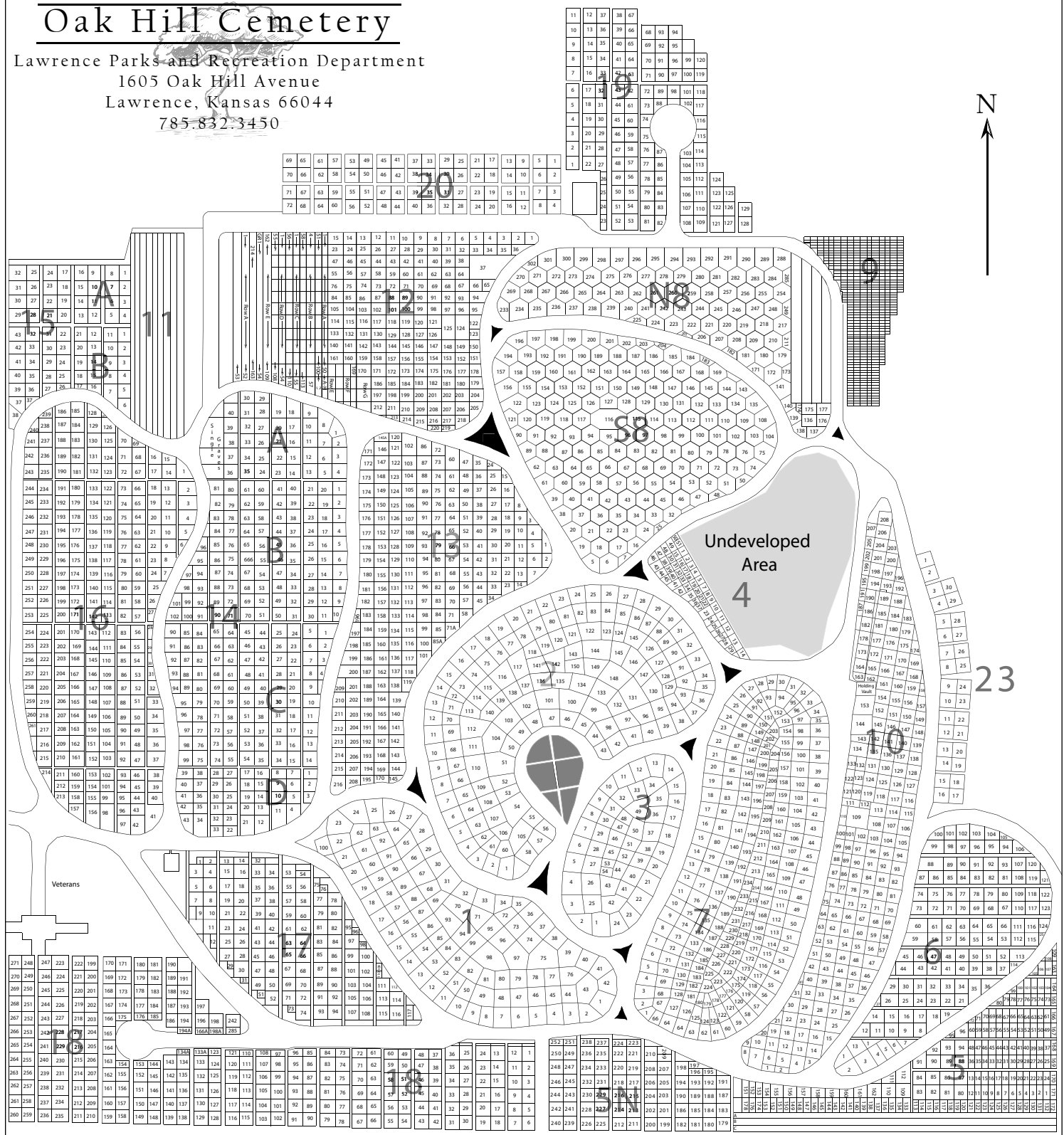


Photo Credit:
<http://www.findagrave.com/cgi-bin/fg.cgi?page=gr&GRid=23707100>

OAK HILL CEMETERY: Section Map

Oak Hill Cemetery

Lawrence Parks and Recreation Department
 1605 Oak Hill Avenue
 Lawrence, Kansas 66044
 785.832.3450



For printable map got to: <http://lawrenceks.org/lprd/parks/oakhillmap/>
 For an interactive search map to: gis.lawrenceks.org/flexviewers/cemetery/

OAK HILL CEMETERY: Speech Graphic Organizer

S-Social

Having to do with interactions between and among people

P-Political

Having to do with the government or any of its functions

E-Economic

Having to do with money; making it, spending it, producing goods, managing it

E-Environment

Having to do with the outdoors including conservation efforts

C-Cultural

Having to do with the ideas, customs and social behavior of groups or individuals

H-History

Having to do with the past

OAK HILL CEMETERY: Reflections

Choose one of the categories below as the best classroom presentation.

- ☐ Social
- ☐ Political
- ☐ Economic
- ☐ Environment
- ☐ Culture
- ☐ History

What notables buried at Oak Hill Cemetery made important contributions to Kansas or the United States in this category?

Defend your choice: why was this category best?