



Asphalt resurfacing to match the east end of 2015 pavement resurfacing project.

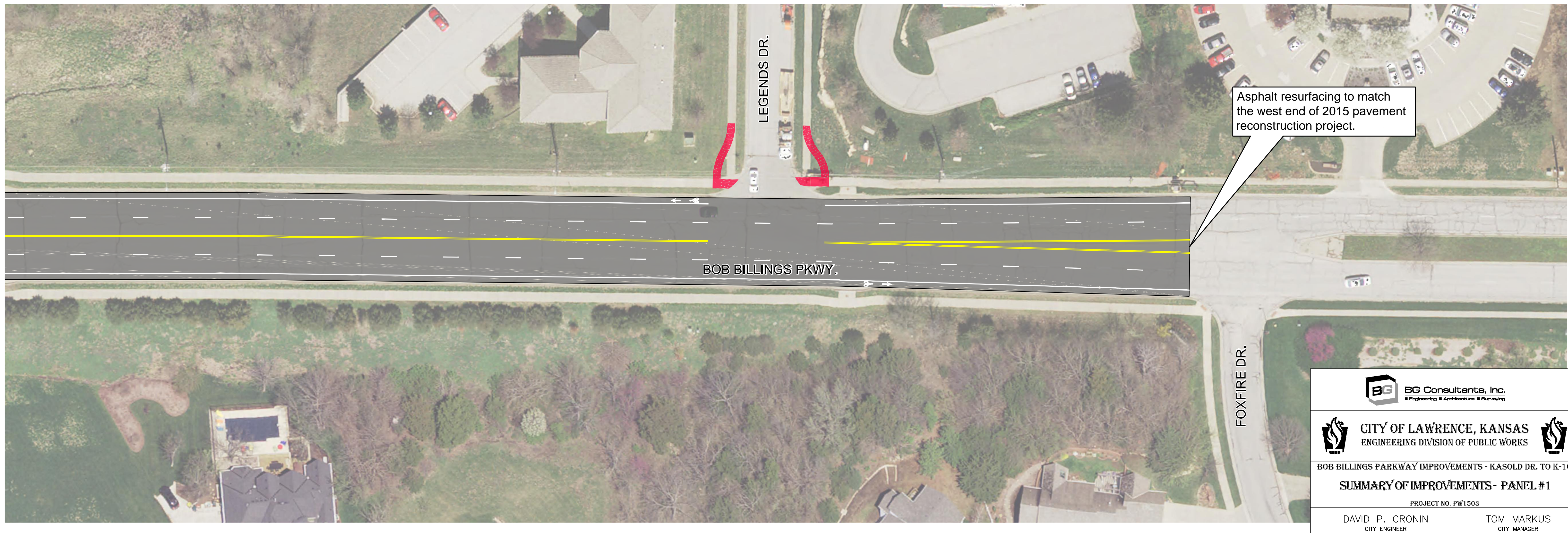
Install Traffic Signal.

Sidewalk extension south to Goff Ct.

LEGEND

- Proposed Concrete Pavement
- Proposed Concrete Sidewalk

NOT TO SCALE



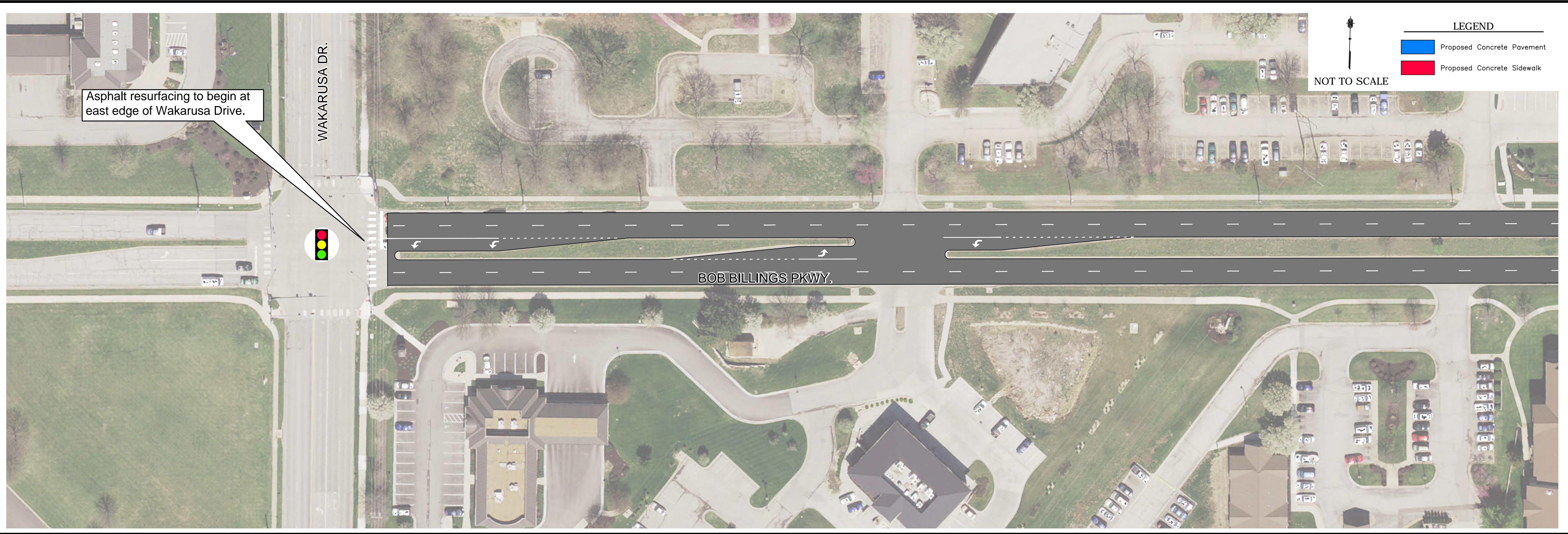
Asphalt resurfacing to match the west end of 2015 pavement reconstruction project.

BG BG Consultants, Inc.
Engineering • Architecture • Surveying

CITY OF LAWRENCE, KANSAS
 ENGINEERING DIVISION OF PUBLIC WORKS

BOB BILLINGS PARKWAY IMPROVEMENTS - KASOLD DR. TO K-10
SUMMARY OF IMPROVEMENTS - PANEL #1
 PROJECT NO. PW1503

DAVID P. CRONIN CITY ENGINEER TOM MARKUS CITY MANAGER



Asphalt resurfacing to begin at east edge of Wakarusa Drive.

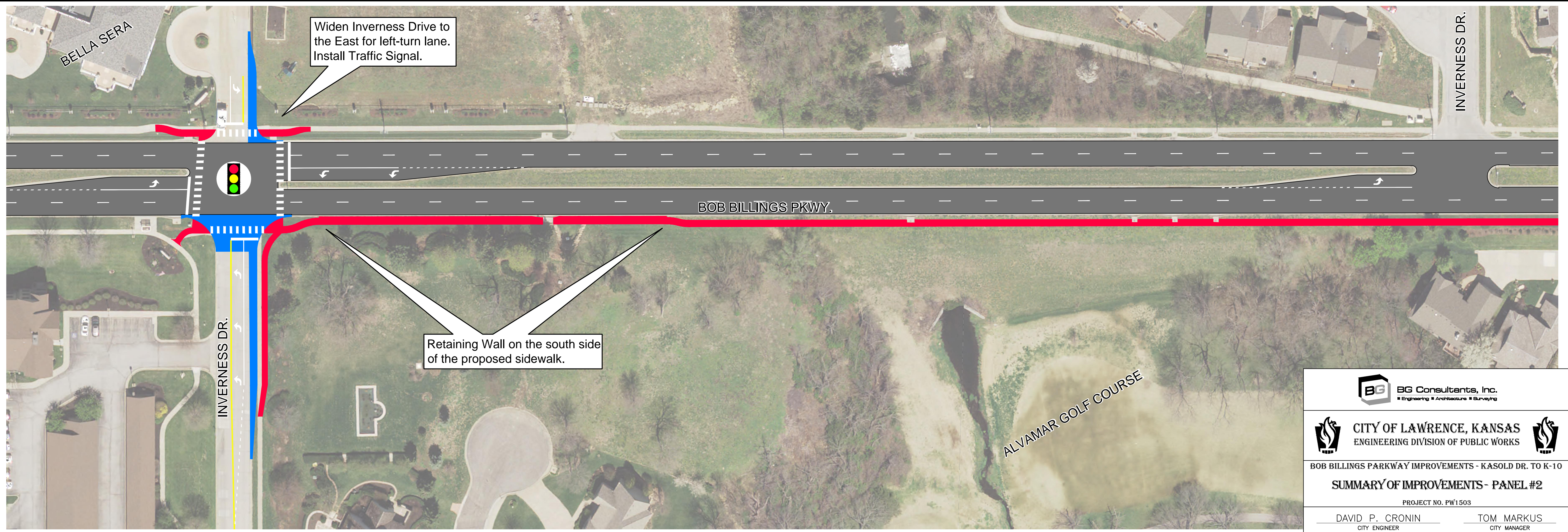
WAKARUSA DR.

BOB BILLINGS PKWY.

LEGEND

- Proposed Concrete Pavement
- Proposed Concrete Sidewalk

NOT TO SCALE



BELLA SERA

Widen Inverness Drive to the East for left-turn lane. Install Traffic Signal.

INVERNESS DR.

BOB BILLINGS PKWY.

Retaining Wall on the south side of the proposed sidewalk.

INVERNESS DR.

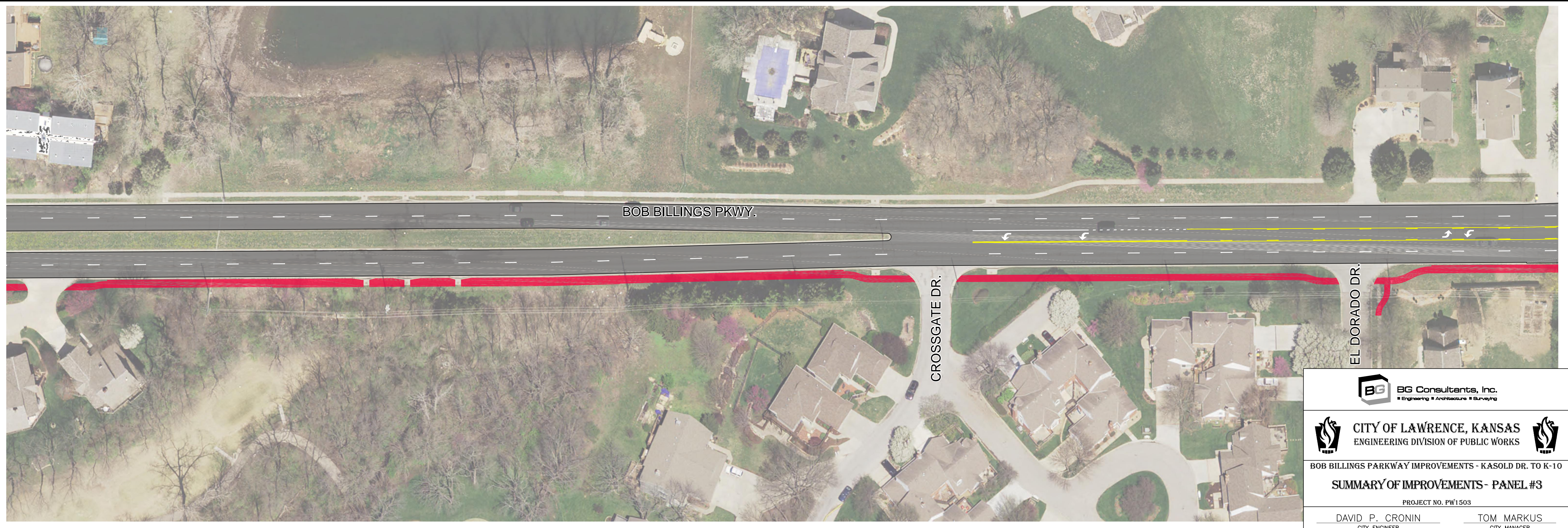
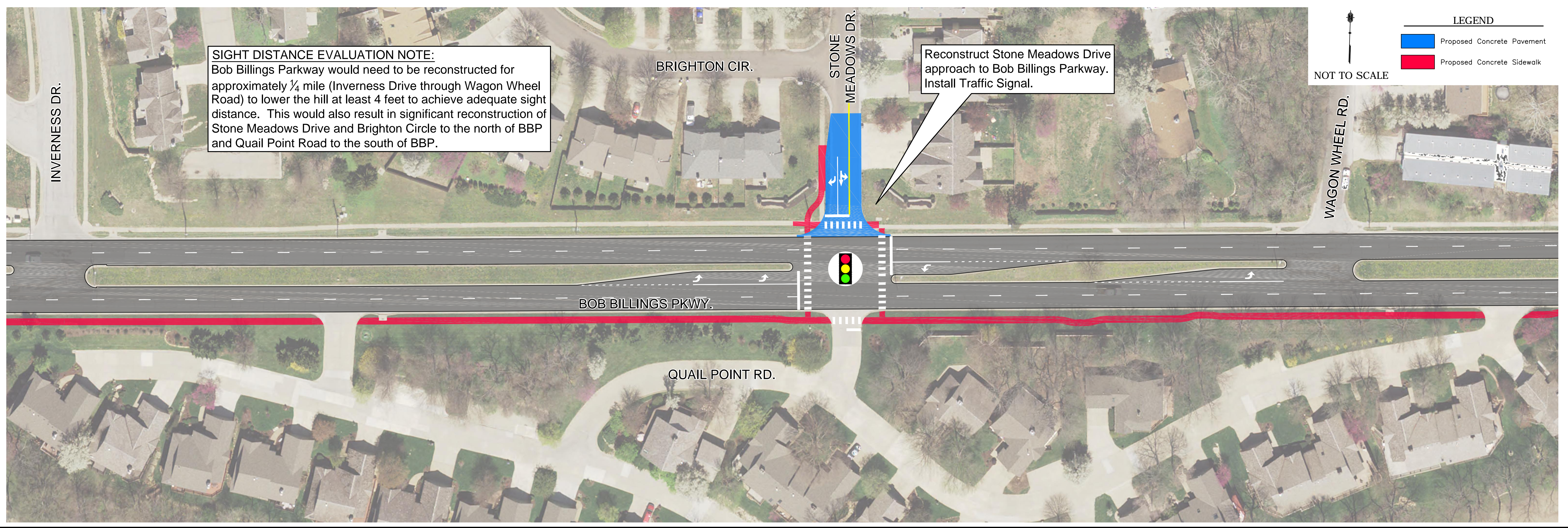
ALVAMAR GOLF COURSE

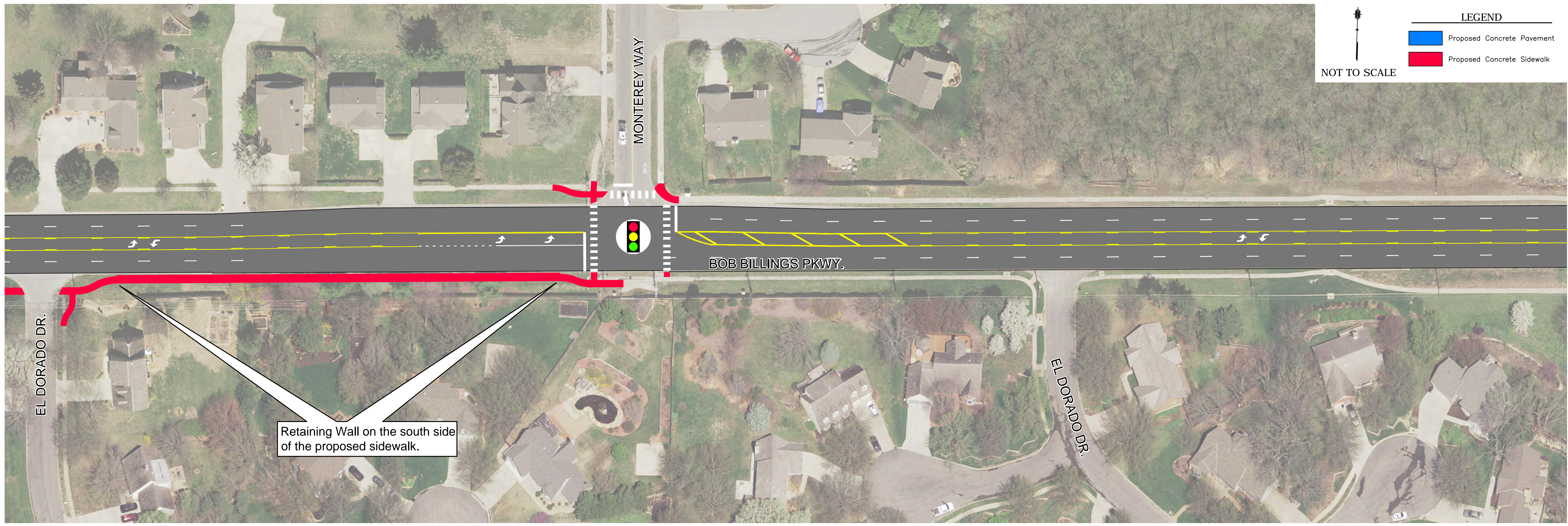
BG BG Consultants, Inc.
Engineering • Architecture • Surveying

CITY OF LAWRENCE, KANSAS
 ENGINEERING DIVISION OF PUBLIC WORKS

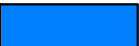

BOB BILLINGS PARKWAY IMPROVEMENTS - KASOLD DR. TO K-10
SUMMARY OF IMPROVEMENTS - PANEL #2
 PROJECT NO. PW1503

DAVID P. CRONIN CITY ENGINEER TOM MARKUS CITY MANAGER








NOT TO SCALE

LEGEND
 Proposed Concrete Pavement
 Proposed Concrete Sidewalk

Retaining Wall on the south side of the proposed sidewalk.



 **BG Consultants, Inc.**
Engineering • Architecture • Surveying

 **CITY OF LAWRENCE, KANSAS**
 ENGINEERING DIVISION OF PUBLIC WORKS 

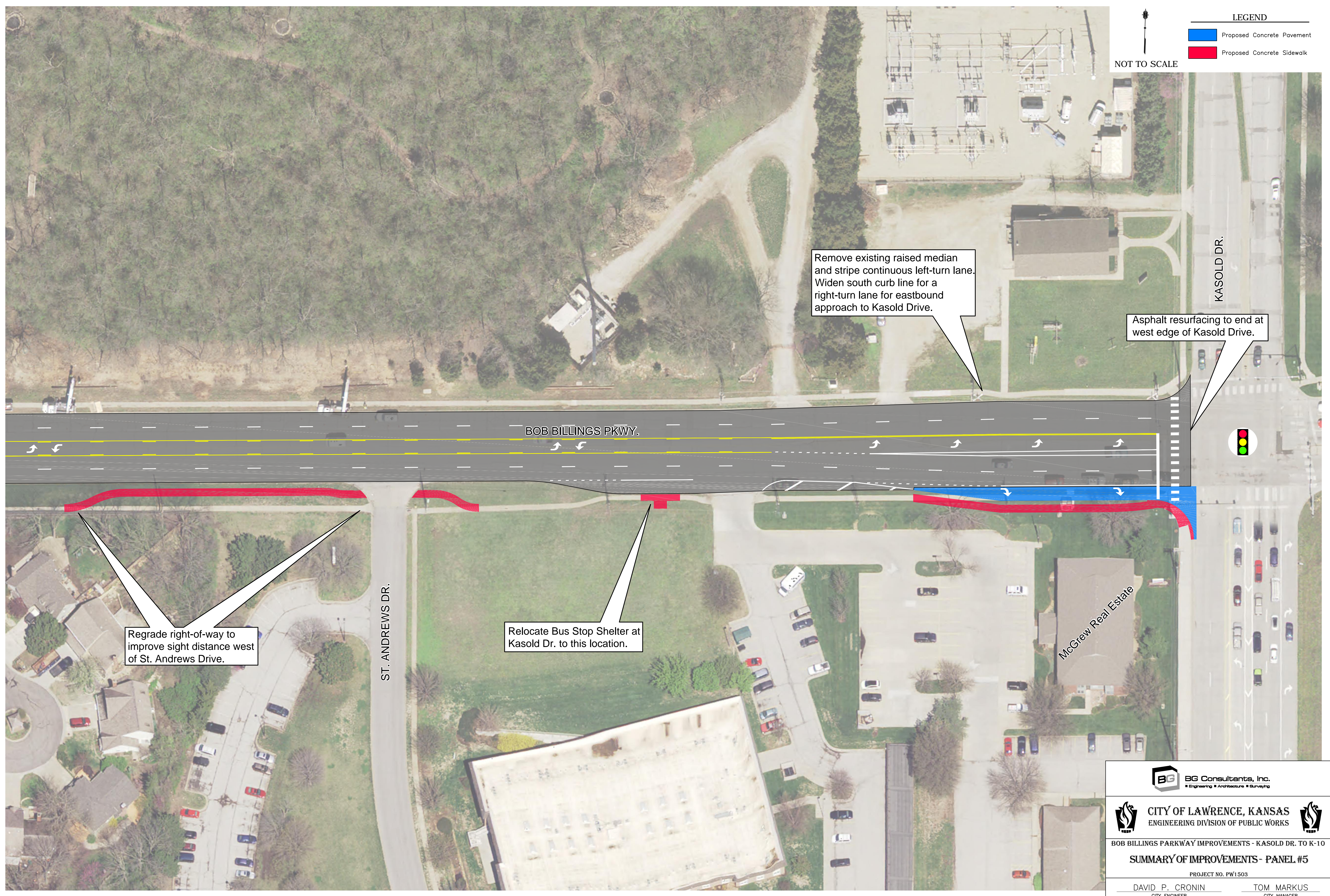
BOB BILLINGS PARKWAY IMPROVEMENTS - KASOLD DR. TO K-10
SUMMARY OF IMPROVEMENTS - PANEL #4
 PROJECT NO. PW1503

DAVID P. CRONIN TOM MARKUS
 CITY ENGINEER CITY MANAGER

NOT TO SCALE

LEGEND

- Proposed Concrete Pavement
- Proposed Concrete Sidewalk



Remove existing raised median and stripe continuous left-turn lane. Widen south curb line for a right-turn lane for eastbound approach to Kasold Drive.

Asphalt resurfacing to end at west edge of Kasold Drive.

Regrade right-of-way to improve sight distance west of St. Andrews Drive.

Relocate Bus Stop Shelter at Kasold Dr. to this location.

BG BG Consultants, Inc.
Engineering • Architecture • Surveying

CITY OF LAWRENCE, KANSAS
 ENGINEERING DIVISION OF PUBLIC WORKS

BOB BILLINGS PARKWAY IMPROVEMENTS - KASOLD DR. TO K-10
SUMMARY OF IMPROVEMENTS - PANEL #5
 PROJECT NO. PW1503

DAVID P. CRONIN TOM MARKUS
CITY ENGINEER CITY MANAGER