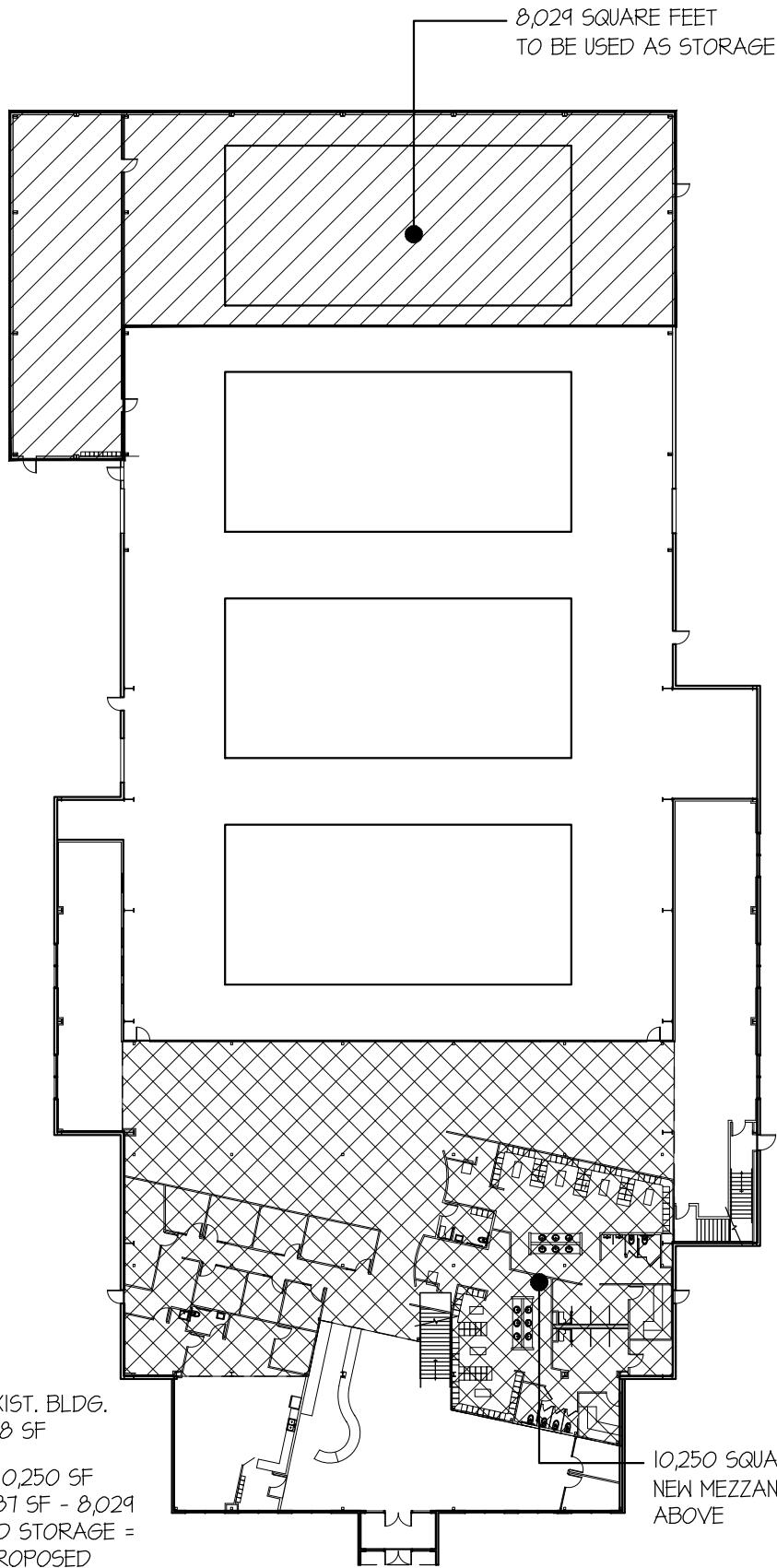


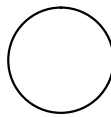
J:\Project\215-000\215-570\CAD & CAD PDF's\Site\CAD\EXHIBITS\SUP square footage exhibit.dwg, 11/4/2015 2:47:13 PM



44,437 SF EXIST. BLDG.
+ 5% = 46,658 SF

44,437 SF + 10,250 SF
MEZZ = 54,687 SF - 8,029
SF OF UNUSED STORAGE =
46,658 SF PROPOSED

10,250 SQUARE FEET
NEW MEZZANINE
ABOVE



FIRST FLOOR PLAN

SCALE: NT5



NORTH

paulwerner
ARCHITECTS

123 W. 8TH STREET
SUITE B2
LAWRENCE, KS 66044

OFFICE: 785.832.0804
FAX: 785.832.0890

© PAUL WERNER ARCHITECTS, L.L.C.
THIS DRAWING IS COPYRIGHTED WORK BY
PAUL WERNER ARCHITECTS L.L.C. THIS
DRAWING MAY NOT BE PHOTOGRAPHED,
TRACED OR COPIED IN ANY MANNER
WITHOUT THE WRITTEN PERMISSION OF PAUL
WERNER ARCHITECTS L.L.C.

KU TENNIS CENTER SUP SITE PLAN

5200 CLINTON PARKWAY
LAWRENCE, KANSAS 66041

PROJECT # 215-570

AUGUST 1, 2015

RELEASE: LO DATE: 10.26.15

EXHIBIT I