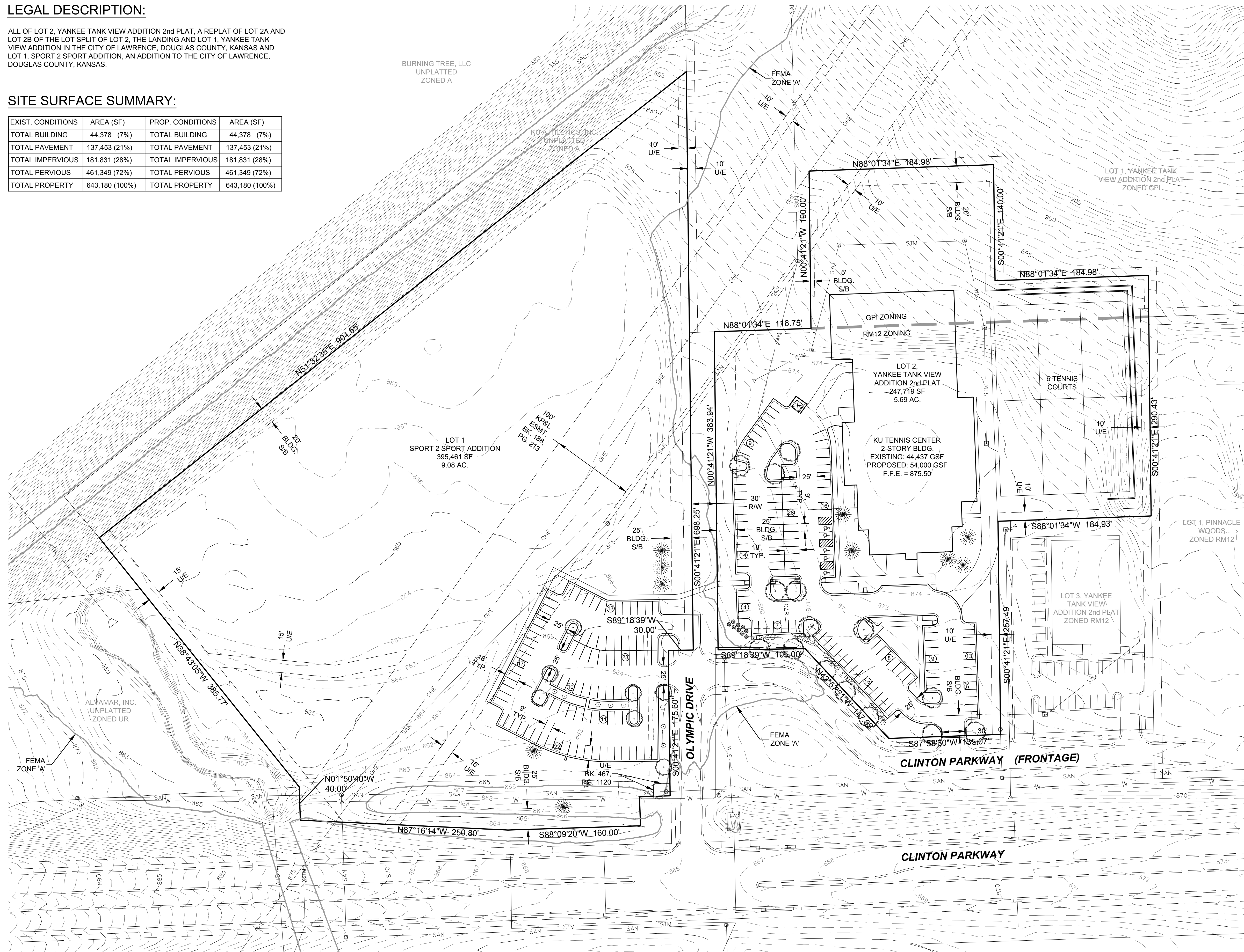


**LEGAL DESCRIPTION:**

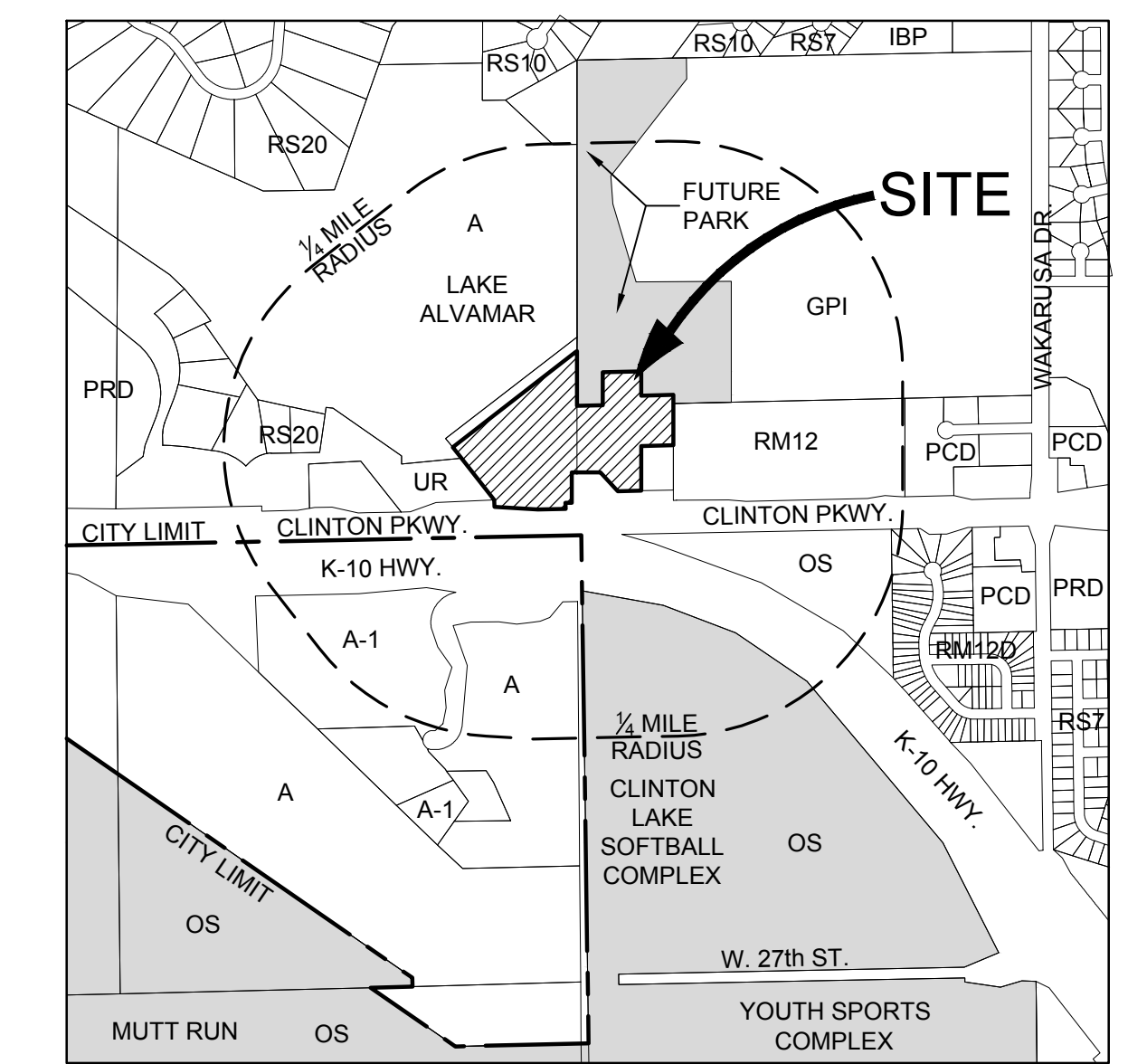
ALL OF LOT 2, YANKEE TANK VIEW ADDITION 2nd PLAT, A REPLAT OF LOT 2A AND LOT 2B OF THE LOT SPLIT OF LOT 2, THE LANDING AND LOT 1, YANKEE TANK VIEW ADDITION IN THE CITY OF LAWRENCE, DOUGLAS COUNTY, KANSAS AND LOT 1, SPORT 2 SPORT ADDITION, AN ADDITION TO THE CITY OF LAWRENCE, DOUGLAS COUNTY, KANSAS.

**SITE SURFACE SUMMARY:**

| EXIST. CONDITIONS | AREA (SF)      | PROP. CONDITIONS | AREA (SF)      |
|-------------------|----------------|------------------|----------------|
| TOTAL BUILDING    | 44,378 (7%)    | TOTAL BUILDING   | 44,378 (7%)    |
| TOTAL PAVEMENT    | 137,453 (21%)  | TOTAL PAVEMENT   | 137,453 (21%)  |
| TOTAL IMPERVIOUS  | 181,831 (28%)  | TOTAL IMPERVIOUS | 181,831 (28%)  |
| TOTAL PERVIOUS    | 461,349 (72%)  | TOTAL PERVIOUS   | 461,349 (72%)  |
| TOTAL PROPERTY    | 643,180 (100%) | TOTAL PROPERTY   | 643,180 (100%) |



**LOCATION MAP:**



**GENERAL NOTES:**

- OWNER: JAYHAWK TENNIS FACILITY, LLC AND KANSAS ATHLETICS, INC. 1651 NAISMITH DRIVE LAWRENCE, KANSAS 66045
- LAND PLANNER/ PAUL WERNER ARCHITECTS 123 W. 8th STREET LAWRENCE, KANSAS 66044
- CIVIL ENGINEER/ SURVEYOR: LANDPLAN ENGINEERING, P.A. 1310 WAKARUSA DRIVE LAWRENCE, KANSAS 66045
- TOPOGRAPHIC INFORMATION SHOWN WAS GENERATED USING 2006 DOUGLAS COUNTY LIDAR DATA.
- EXISTING ZONING: RM12, GPI, RS40
- PROPOSED ZONING: RM12
- EXISTING LAND USE: ACTIVE RECREATION
- PROPOSED LAND USE: ACTIVE RECREATION
- A PORTION OF THE SUBJECT PROPERTY LIES WITHIN A DESIGNATED "SPECIAL FLOOD HAZARD AREA" AS DEFINED BY FLOOD INSURANCE RATE MAP (FIRM); PANEL NO. 154, MAP NUMBER 200450154D, DOUGLAS COUNTY, KANSAS, BEARING AN EFFECTIVE DATE OF SEPTEMBER 2, 2015.
- THIS SITE HAS BEEN DESIGNED TO COMPLY WITH THE PROVISIONS OF THE AMERICANS WITH DISABILITIES ACT ACCESSIBILITY GUIDELINES (ADAAG) FOR BUILDINGS AND FACILITIES, APPENDIX A TO 28 CFR PART 36.

**PARKING SUMMARY:**

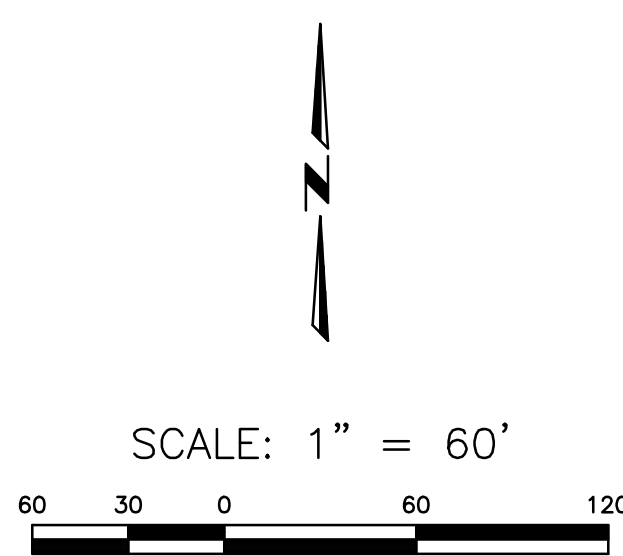
| OFF-STREET PARKING | REQUIRED:  | PROVIDED:                      |
|--------------------|--|--------------------------------|
| ACTIVE RECREATION  | 1 SPACE / 500 SF OF BUILDING + 4 SPACES / TENNIS COURT | 219 SPACES, INCL. 5 ACCESSIBLE |
| BICYCLE PARKING    | 1 SPACE / 10 AUTO SPACES                               | 10 SPACES                      |

**LANDSCAPE SUMMARY:**

| STREET TREES      | REQUIRED:                              | PROVIDED:           |
|-------------------|--|---------------------|
| ACTIVE RECREATION | 1 TREE / 40 FEET OF R.O.W. FRONTAGE    | 9 TREES             |
| LANDSCAPING       | 40 SF LANDSCAPING AREA / PARKING SPACE | 13 TREES & 5 SHRUBS |

**PLANT SCHEDULE:**

| SYMBOL          | QTY. | NAME   | SIZE      | COND. |
|-----------------|------|--|-----------|-------|
| EXISTING TREES  |      |  |           |       |
| (Tree Symbol)   | 22   | FRAXINUS AMERICANA WHITE ASH                   | 6-8" CAL. | N/A   |
| (Tree Symbol)   | 10   | PINUS SYLVESTRIS SCOTCH PINE                   | 4-6" CAL. | N/A   |
| EXISTING SHRUBS |      |  |           |       |
| (Shrub Symbol)  | 30   | EUONYMUS ALATUS BURNIGN BUSH                   | 5' HT.    | N/A   |
| (Shrub Symbol)  | 9    | JUNIPERUS SABINA 'BROADMOOR' BROADMOOR JUNIPER | 2' HT.    | N/A   |



**LANDPLAN ENGINEERING P.A.**  
 Lawrence, KS • Kansas City, MO • The Woodlands, TX  
 1310 Wakarusa Drive, Suite 100  
 Lawrence, Kansas 66049  
 785.843.7530 (p) | 785.843.2410 (f)  
 info@landplan-pa.com | www.landplan-pa.com

©Landplan Engineering, P.A. 2015. This drawing is copyrighted by Landplan Engineering, P.A. This drawing may not be photocopied, traced, or copied in any manner without the written permission of Landplan Engineering, P.A.

**5200 CLINTON PARKWAY  
 LAWRENCE, KANSAS 66047**

**KU TENNIS CENTER  
 SPECIAL USE PERMIT SITE PLAN**

| REV. | DATE | DESCRIPTION |
|------|------|-------------|
|      |      |             |

DATE: 9/14/15  
 PROJECT NO.: 20153018  
 DESIGNED BY: PWA  
 DRAWN BY: LPE  
 CHECKED BY: BS

ISSUE SHEET NO. **1**  
 OF 1 SHEETS

FILE NAME: Z:\20153018\CAD\Planning\153018C-SUP.dwg LAST SAVED BY: Brian Sturm SAVED DATE: 9/14/2015 4:57 PM PLOTTED: 9/14/2015 4:59 PM