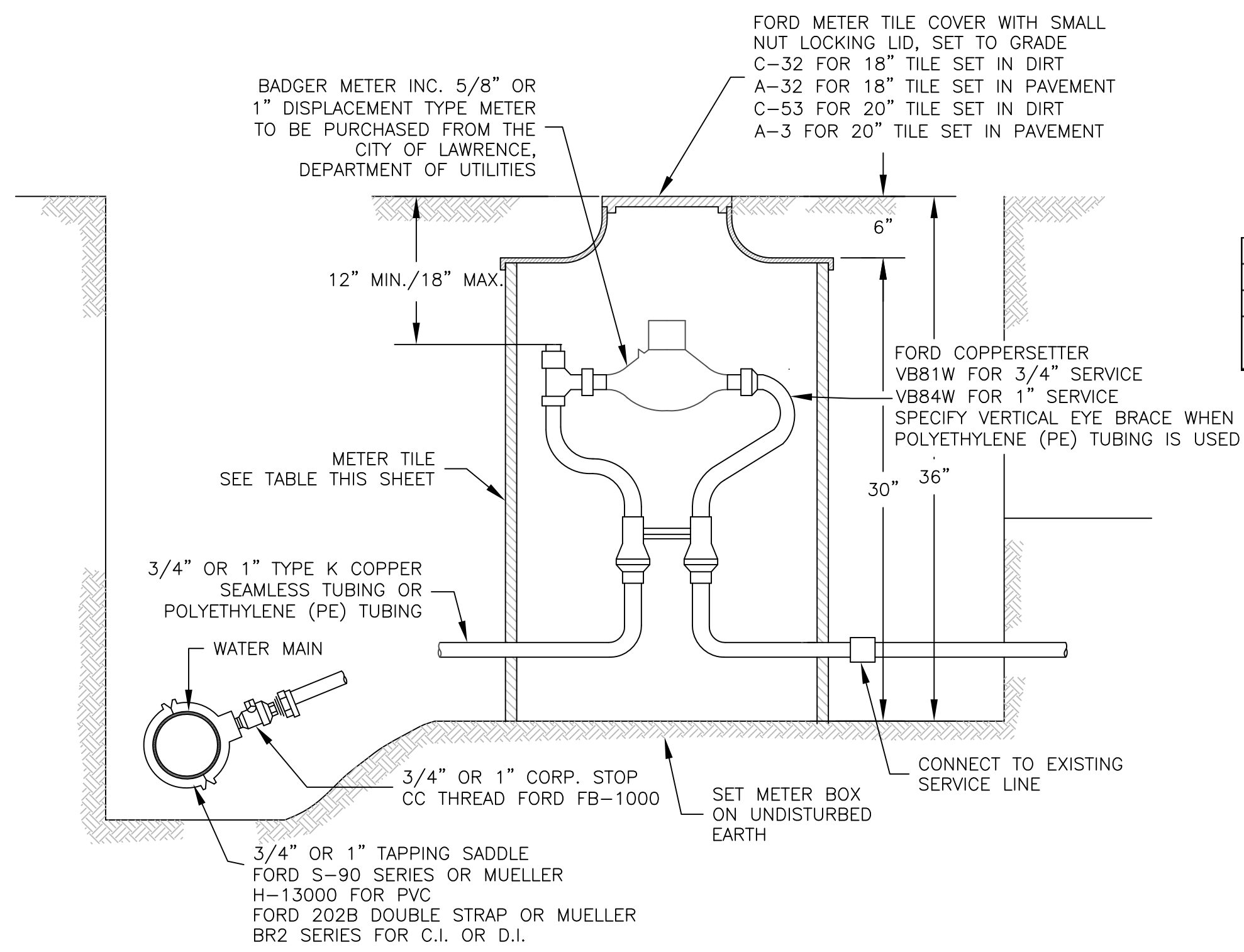


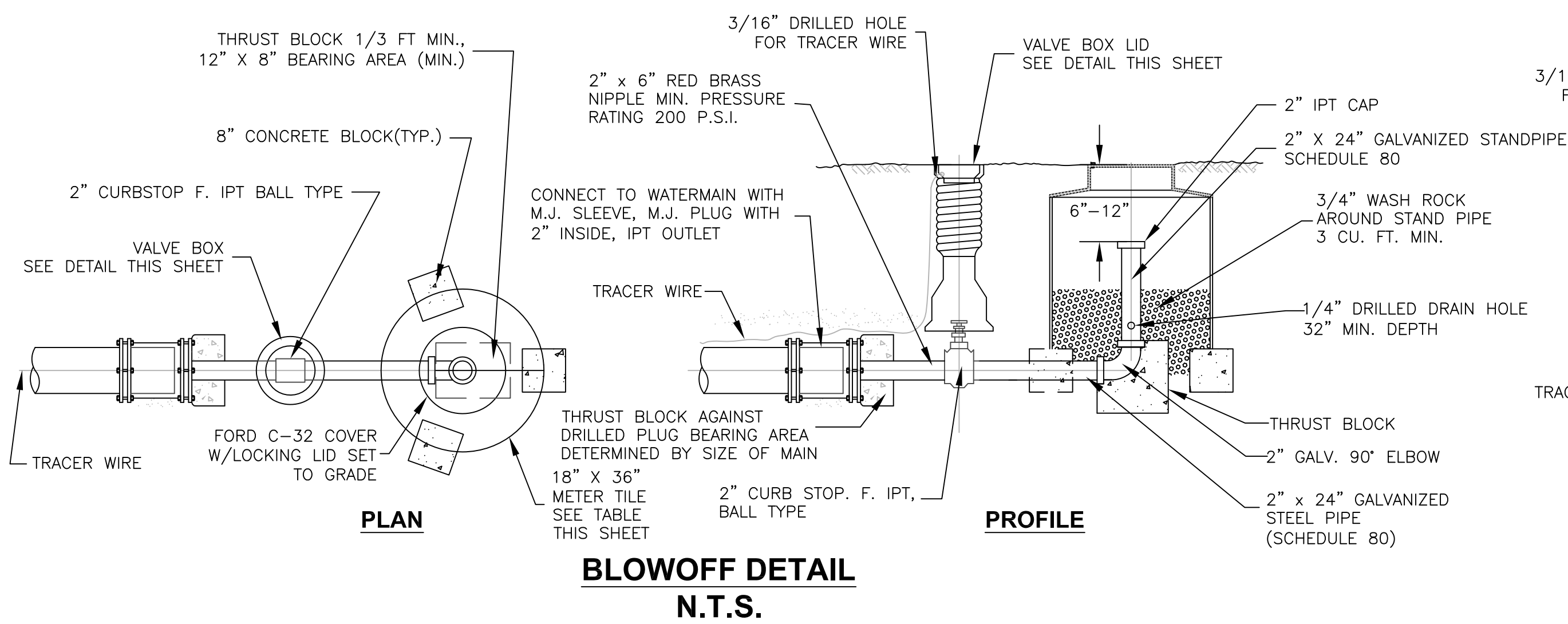
TYPICAL 1 1/2" OR 2" SERVICE CONNECTION
N.T.S.



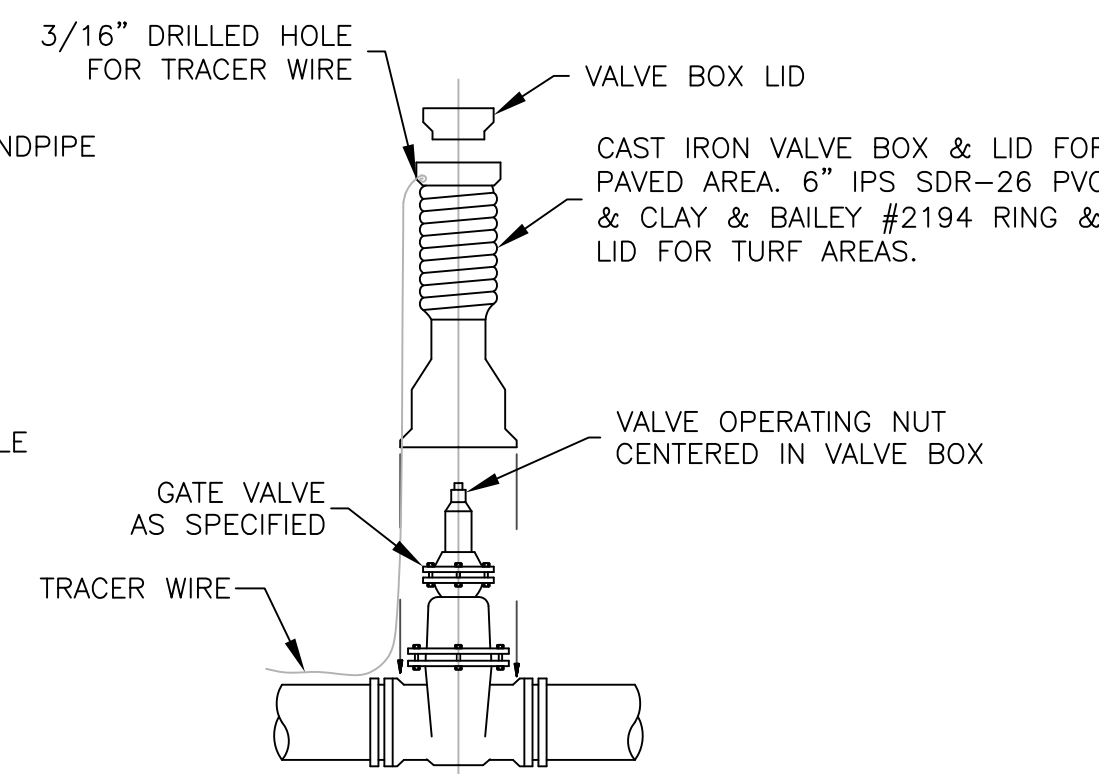
TYPICAL 3/4" & 1" SERVICE CONNECTION
N.T.S.

METER SIZE	METER TILE	ACCEPTABLE PRODUCTS
5/8"	18" DIA.	ADS 1805 AAH, 18050012H, HANCOR MP-NL1-18-002, MP-PL1-18-012
1"	20" DIA.	OLDCASTLE 00202013
1 1/2" OR 2"	36" DIA.	36" DIA. GALVANIZED STEEL PIPE, ADS OR HANCOR N-12 HDPE OR CONTECH A2000 PVC

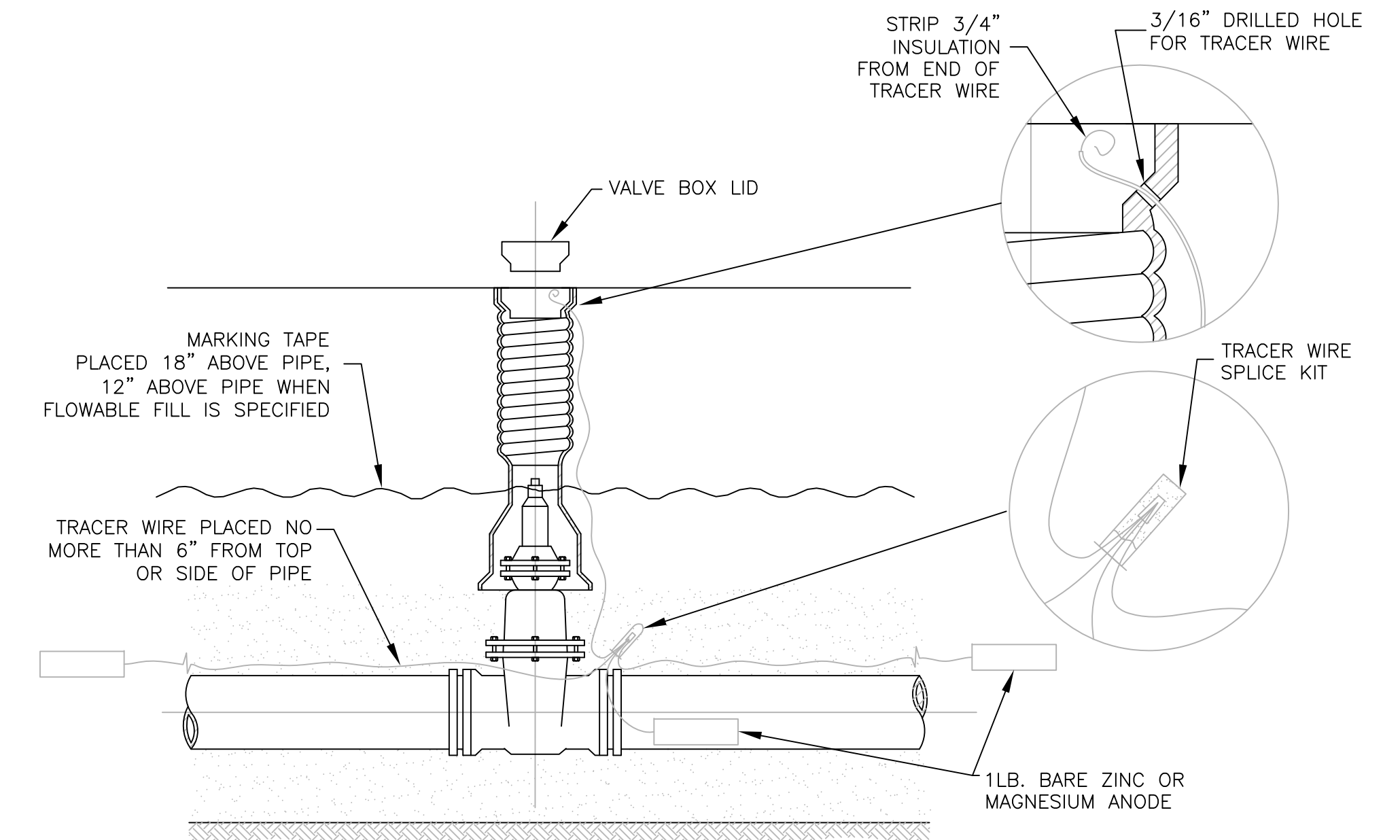
APPROVED METER TILE MATERIALS



BLOWOFF DETAIL
N.T.S.



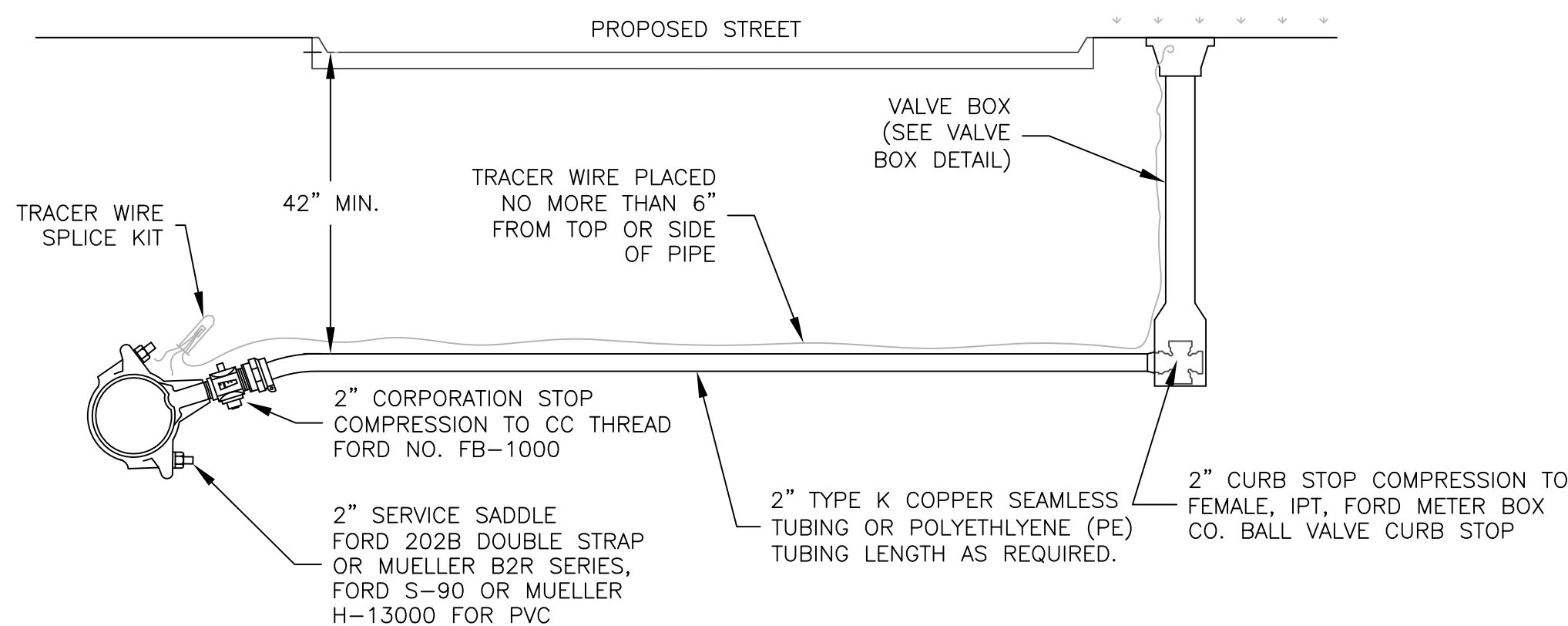
VALVE AND VALVE BOX DETAIL
N.T.S.



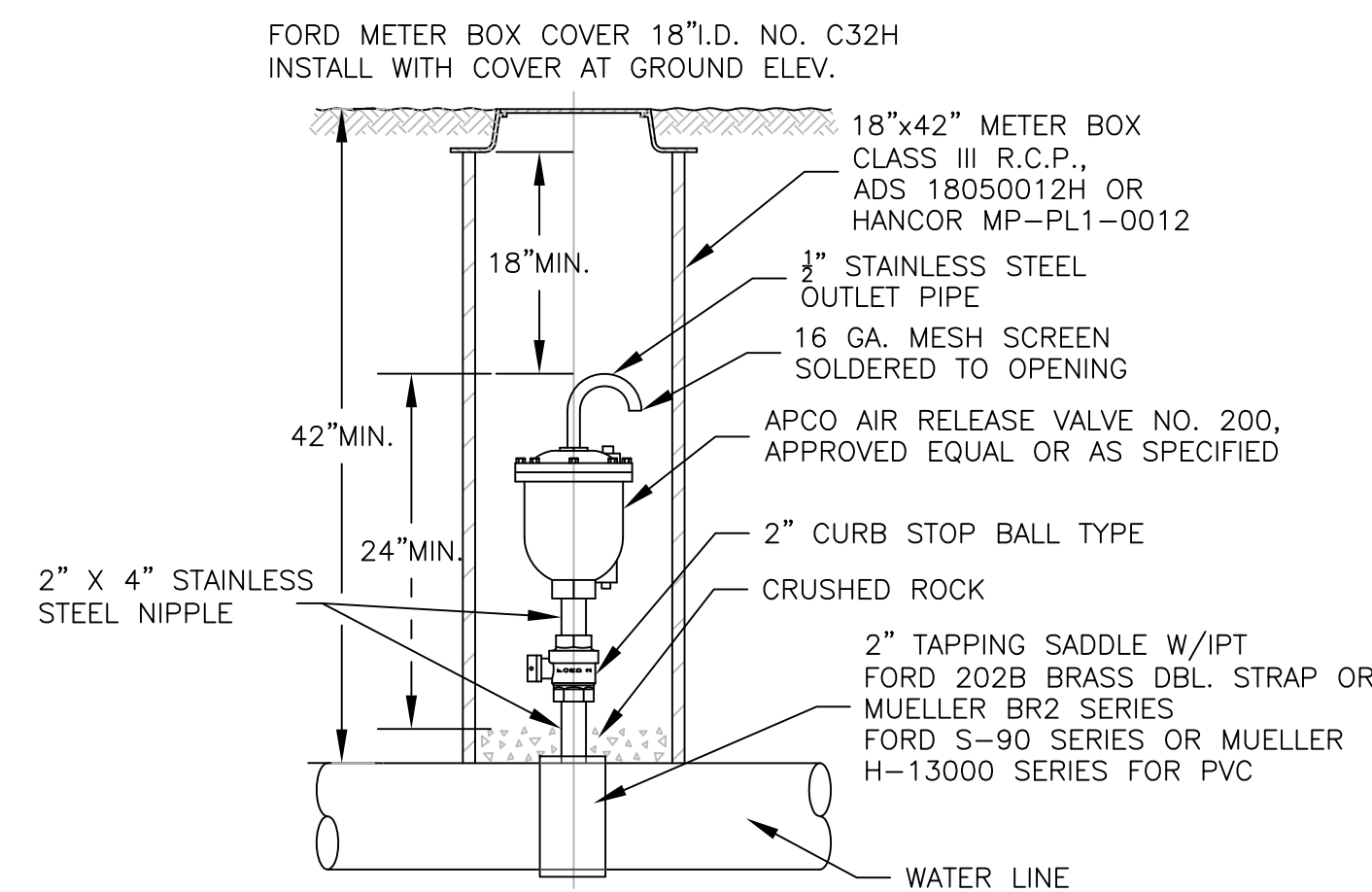
***NOTE:**

- ANODES SHALL BE ONE POUND (1 LB.) BARE ZINC OR MAGNESIUM (OR APPROVED EQUAL). PLACED AT THE BEGINNING AND THE END OF THE WATERLINE AND AT EVERY VALVE BOX TEST STATION AND/OR AT LEAST EVERY FIVE HUNDRED FEET (500') WITHIN.
- SPLICE CONNECTIONS SHALL BE COPPERHEAD INDUSTRIES LLC SNAKEBITE LOCKING WIRE CONNECTOR.
- TRACER WIRE SHALL BE NO. 12 THHN ANNEALED SOFT COPPER WIRE (SOLID) WITH BLUE THERMAL PLASTIC INSULATION FOR OPEN TRENCH INSTALLATIONS OR NO. 12 COPPER CLAD STEEL (CCS). MINIMUM BREAK LOAD OF 1150 LBS. WITH BLUE 45 MIL HDPE JACKET FOR DIRECTIONAL DRILL INSTALLATION. TRACER WIRE SHALL BE PLACED NO FURTHER THAN 6" TO THE SIDE OR ABOVE THE WATERLINE. TRACER WIRE SHALL BE ACCESSIBLE AT VALVE BOX OR TEST STATIONS AT LEAST EVERY 500'.
- MARKING TAPE SHALL BE INSTALLED 18" ABOVE PVC PIPE OR DUCTILE IRON PIPE. MARKER TAPE SHALL BE AT LEAST 3" IN WIDTH, BLUE IN COLOR WITH BLACK LETTERING STATING, "CAUTION BURIED WATERLINE BELOW."
- TRACER WIRE SHALL BE REQUIRED ON ALL POLYETHYLENE (PE) TUBING SERVICE LINES. SPLICE SERVICE LINE TRACER WIRE TO TRACER WIRE AT THE EXISTING WATERMAIN WITH APPROVED CONNECTOR. IF NO TRACER WIRE IS IN PLACE ON THE EXISTING WATERMAIN, TIE SERVICE LINE TRACER WIRE TO 1LB. ANODE AT EXISTING WATERMAIN.

TRACER WIRE / MARKER TAPE DETAIL
N.T.S.



2" STREET SERVICE CROSSING
N.T.S.



AIR RELEASE VALVE DETAIL
N.T.S.

BY	DATE	REVISION
JDS	12/2010	UPDATE SERVICE CONNECTION DETAILS TO REFLECT USE OF POLYETHYLENE (PE) TUBING
JDS	12/2011	ANNUAL UPDATE



**STANDARD WATERLINE
DETAILS**

JOHN SHUTAK UTILITIES ENGINEER DAVID L. CORLISS CITY MANAGER

