

1. PUBLIC WATER MAIN
2. TAPPING SADDLE CONFORMING TO SECTION 2902.5.6 OF THE CITY OF LAWRENCE CONSTRUCTION AND MATERIAL SPECIFICATIONS.
3. 6" RED BRASS NIPPLE SCH.40, 200 PSI MIN. CONFORMING TO ALL APPLICABLE REQUIREMENTS OF ASTM B687-88 AND ANSI/ASME B1.20.1.
4. CURB STOP:
FORD METER BOX COMPANY B41 BALL TYPE CURB STOP.
5. VALVE BOX AND COVER CONFORMING TO SECTION 2902.3.12 OF THE CITY OF LAWRENCE CONSTRUCTION AND MATERIAL SPECIFICATIONS OR METER TILE AND LID CONFORMING TO SECTION 2902.5.8 OF THE CITY OF LAWRENCE CONSTRUCTION AND MATERIAL SPECIFICATIONS. METER TILE FOR FIRELINES 1 INCH AND SMALLER ONLY.
6. FIRE LINE PIPING (CONTINUOUS), SIZING PROVIDED BY APPLICANT. PIPE MATERIAL SHALL CONFORM WITH SECTION 2902.2 OF THE CITY OF LAWRENCE CONSTRUCTION AND MATERIAL SPECIFICATIONS.
7. CURB STOP (PRIVATE) OR METER SETTER CONFORMING TO SECTION 2902.5.8 OF THE CITY OF LAWRENCE CONSTRUCTION AND MATERIAL SPECIFICATIONS. METER SETTER FOR FIRELINES 1 INCH AND SMALLER ONLY.
8. BACKFLOW PREVENTION DEVICE TO BE LOCATED WITHIN 50 FEET OF THE PUBLIC WATER MAIN. DEVICE APPROPRIATE HOUSING TO BE PROVIDED IF BACKFLOW PREVENTION DEVICE CANNOT BE LOCATED IN THE BUILDING. BACKFLOW PREVENTION DEVICE SHALL BE COMMENSURATE WITH THE HAZARD POSED TO THE PUBLIC WATER SUPPLY SYSTEM AND IS SUBJECT TO APPROVAL BY THE DEPARTMENT OF UTILITIES.

2" AND SMALLER FIRELINE CONNECTION DETAIL

SCALE: NONE

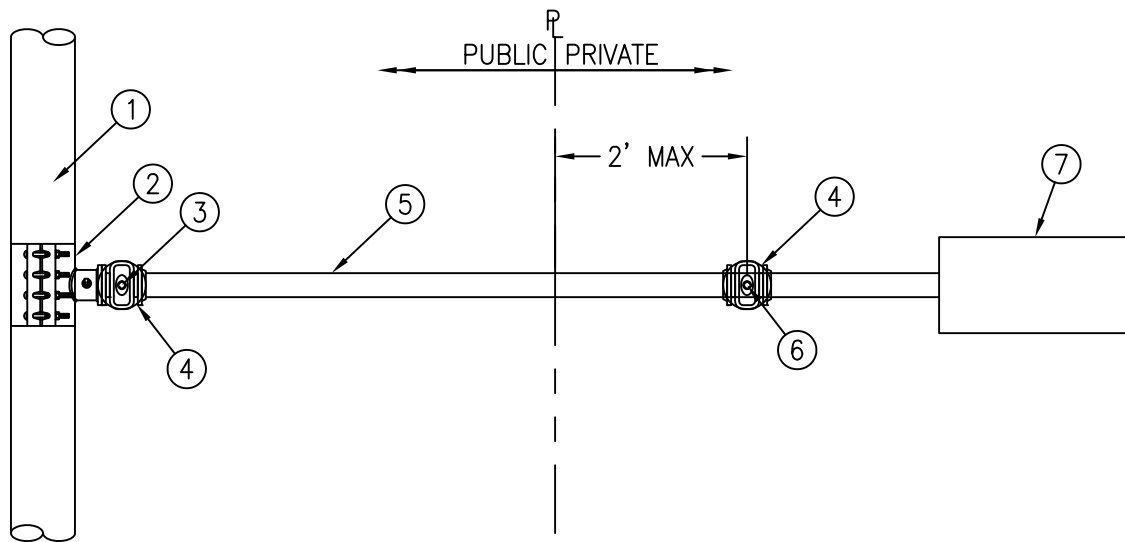
DATE: AUG. 2010 REV.: 1

DRAWN: JB

APPROVED: JDS



City of Lawrence
UTILITIES



1. PUBLIC WATER MAIN
2. TAPPING SLEEVE CONFORMING TO SECTION 2902.5.7 OF THE CITY OF LAWRENCE CONSTRUCTION AND MATERIAL SPECIFICATIONS.
3. VALVE CONFORMING TO SECTION 2902.3.1 OR SECTION 2902.3.8 OF THE CITY OF LAWRENCE CONSTRUCTION AND MATERIAL SPECIFICATIONS.
4. VALVE BOX AND COVER, 6" IPS SDR26 PVC WITH CLAY AND BAILEY #2194 OR STAR PIPE PRODUCTS VB-0045 FOR TURF AREAS, CLAY AND BAILEY #2193 OR AMETEK MAINLINE SERIES FOR PAVED AREAS. VALVE BOX AND COVER NOT APPLICABLE TO POST INDICATOR VALVES.
5. FIRE LINE PIPING, SIZING PROVIDED BY APPLICANT. PIPE MATERIAL SHALL CONFORM WITH SECTION 2902.2 OF THE CITY OF LAWRENCE CONSTRUCTION AND MATERIAL SPECIFICATIONS.
6. POST INDICATOR OR GATE VALVE (PRIVATE).
7. BACKFLOW PREVENTION DEVICE TO BE LOCATED WITHIN 50 FEET OF THE PUBLIC WATER MAIN. DEVICE APPROPRIATE HOUSING TO BE PROVIDED IF BACKFLOW PREVENTION DEVICE CANNOT BE LOCATED IN THE BUILDING. BACKFLOW PREVENTION DEVICE SHALL BE COMMENSURATE WITH THE HAZARD POSED TO THE PUBLIC WATER SUPPLY SYSTEM AND IS SUBJECT TO APPROVAL BY THE DEPARTMENT OF UTILITIES.

3" AND LARGER FIRELINE CONNECTION DETAIL

SCALE: NONE	DATE: AUG. 2010	REV.: 1
DRAWN: JB	APPROVED: JDS	



City of Lawrence
UTILITIES