



Annual Report

2008



The **T** provided **387,938** one-way trips in 2008, and the **T Lift** provided **49,733** one-way trips.

ADMINISTRATOR'S MESSAGE

2008 was an eventful chapter in Lawrence Transit System history. After a period of uncertainty, the year concluded with voters approving two sales tax initiatives, securing the future of public transit in Lawrence for the next ten years. Citizens overwhelmingly passed a 0.20% sales tax to support transit in its current form, and an additional 0.05% sales tax to provide new resources for route enhancements and vehicle improvements.

The City also made great strides toward better coordination with the University of Kansas. In August, a planning team of City and University representatives was appointed to work on issues related to coordination. A reciprocal pass program was established, allowing each system's riders to board the other system's buses for free. The City and University re-

leased two joint requests for proposal in 2008, one for a transit service provider for both systems and another for coordinated route and schedule design. The team hosted two open house events in December to gather input from the public on what the future of transit in Lawrence should look like.

We bid farewell to a team member this year when Cliff Galante left Lawrence for Las Vegas, accepting a job as manager of fixed route services for the Regional Transportation Commission of Southern Nevada. We wish Cliff well and thank him for his contributions.

We look forward to 2009 as we continue our work toward increased coordination with KU and will continue to strive to provide more efficient and more effective public transportation services.

— **Casey Toomay, Interim Public Transit Administrator**

AT A GLANCE



City employees: **3**, and contracted MV Transportation employees: **60**

Routes: **8**

Vehicles: **12** fixed route, **14** paratransit, and **5** park & ride

Average daily ridership in 2008 for the T: **1,260** and for the T Lift: **161**

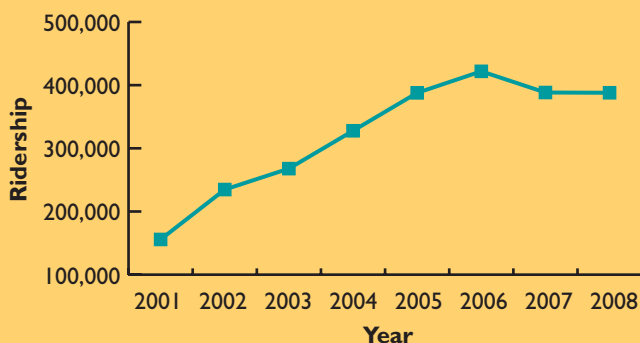
Miles traveled by T and T Lift in 2008: **825,542**

Hours operated by T and T Lift in 2008: **65,480**

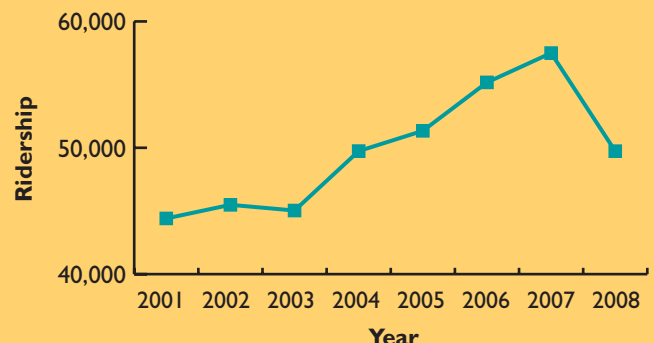
Wheelchair accessibility of bus fleet: **100%**

Hours of service: **6 a.m. to 8 p.m.**, Monday – Saturday

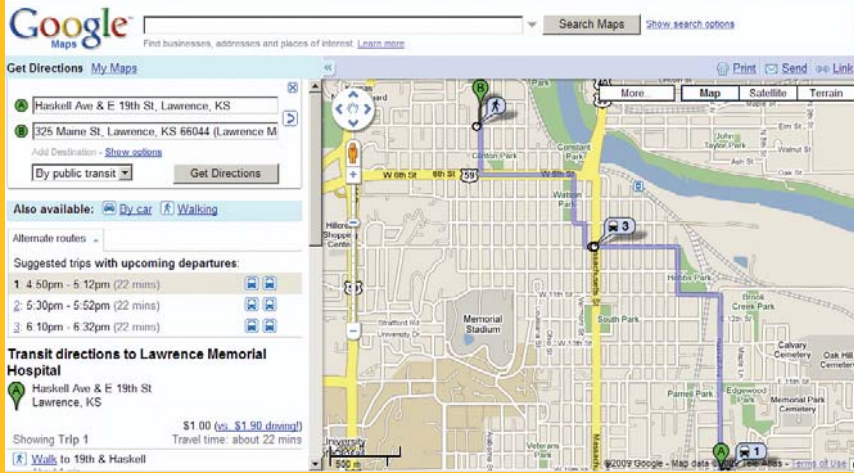
T fixed-route ridership



T Lift paratransit ridership



ACCOMPLISHMENTS



taking people to
work, school,
medical visits

vital

affordable
sustainable

SYSTEM IMPROVEMENTS

- Joined Google Transit as the first transit system in Kansas to do so, enabling users to plan trips online anytime.
- Implemented the second phase of service and fare policies to better manage the rising demand and cost for transit service.

PLANNING EFFORTS

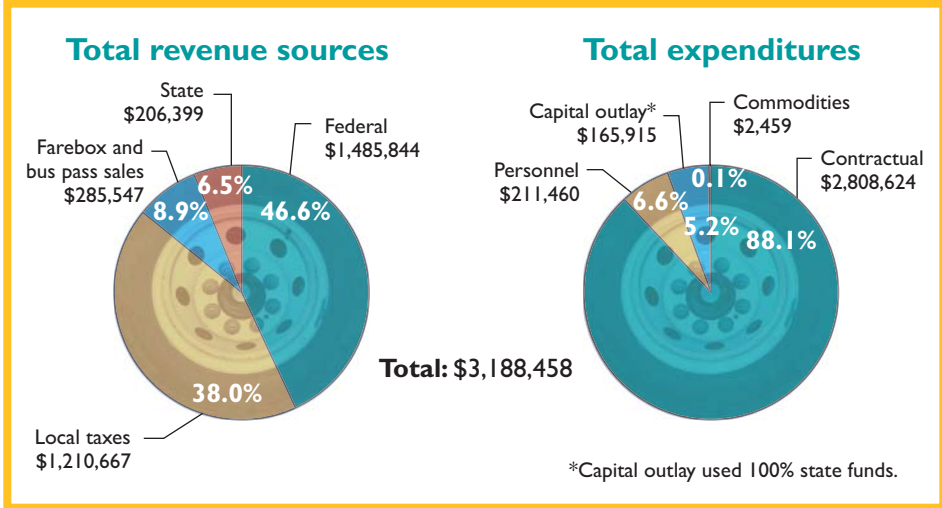
- Released results of a community-wide survey about public transportation to discover how transit is perceived and used in the community and what improvements it would take to encourage greater usage.
- Attended stakeholder meetings for the development of the KDOT sponsored 5-County Regional Transportation Study covering Douglas, Johnson, Wyandotte, Miami and Leavenworth Counties.
- Participated in regional meetings about transportation priorities with members of Governor Kathleen Sebelius' transportation task force, T-LINK (Transportation – Leveraging Investments in Kansas).

PARTNERSHIPS

Coordination of transit services with the University of Kansas

- Worked closely with the University to release two joint requests for proposal, one for a transit service provider for both systems and another for coordinated route and schedule design.
- Established a reciprocal pass program between the T and KU on Wheels, allowing each system's riders to board the other system's buses for free.

Revenues and expenditures



Get On The Bus Lawrence

University of Kansas/City of Lawrence Coordinated Transit Systems



- Launched a new collaborative web site, getonthebuslawrence.org, to keep members of the KU and Lawrence communities updated on coordination efforts.

University of Kansas Park & Ride

- Launched in August 2006, this service provides a public shuttle from a Park & Ride facility to stops on the KU campus. Buses were purchased using federal funds the City received. In 2008, a total of 375,304 trips were provided.

Carpool Connection

- Continued growth of Carpool Connection, a free online matching service for commuters interested in ride-sharing in Lawrence and the Kansas City metro area. The program was created through a partnership with the Mid-America Regional Council's Rideshare Program. In 2008, the number of people registered jumped from almost 2,000 to more than 8,000. There are 541 Lawrence residents registered on the site and 181 who work in Lawrence.



safe
for people
of all ages
maintaining
productive
lifestyles

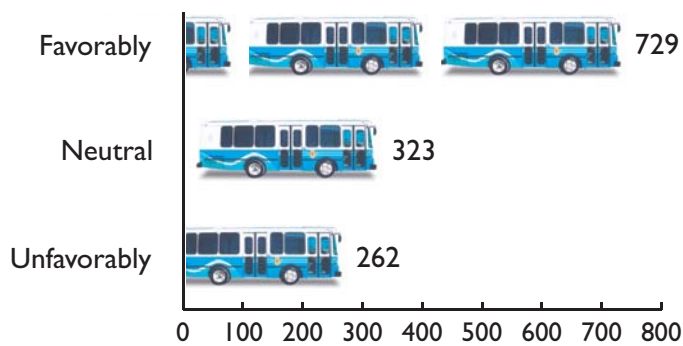
independence



COMMUNITY ACTIVITY

Transit and the community

How do you view public transportation in Lawrence?



Results from community-wide survey on public transportation, released in March 2008

AWARDS

- Received an Award of Excellence for increased ridership from the Federal Transit Administration. Presented to staff members at the annual meeting of the Kansas Public Transit Association, the award was granted for the highest percentage increase in ridership in the Kansas Urbanized Area Transit Program for 2007.



- Took first place in the American Public Transportation Association's *Ad Wheel* competition for our 2007 Annual Report design.
- Received the NAACP 2008 Business Impact Award.

PUBLIC OUTREACH

Community Events

- Participated in the **Earth Day** celebration by offering a free ridership day on the T and conducting public outreach activities.
- Joined transit agencies nationwide in promoting **Dump the Pump Day** to encourage use of public transportation.
- Offered a free ridership day for the Lawrence/Douglas County Fire Medical Department's **Helmet Fair**.

- Gave 1,987 free rides in honor of the annual **Downtown Lawrence Sidewalk Sale**.
- Partnered with KU on **Wheels** for several days of **How to Ride** outreach on campus during the start of the fall semester.
- Attended **Feria Hispana** to inform the Spanish-speaking community about available public transportation services.
- Talked with the public at the **Home Energy Conservation Fair** about public transportation, carpooling, and the sales tax proposals.
- City manager spoke with many groups about issues related to the **sales tax proposals** for public transit.
- Hosted two **open house events** with the University to gather input from the public on what the future of transit in Lawrence should look like.

Public Education

Facilitated public outreach and education for individuals and groups, including the following:

- Bert Nash
- C-Tran Program
- First Step at Lakeview
- Haskell Indian Nations University
- Kaw Valley Older Women's League
- Lawrence Public Schools and School District Staff
- Small World Program at First Presbyterian Church
- Transition Council Resource Expo
- University of Kansas



accessible
courteous
and friendly
links to
community
resources

reliable

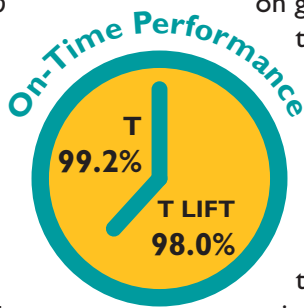
What people are saying

Many people wrote letters to the editor and spoke out on behalf of public transit in 2008. We thank them for their support and share a few of their comments here.

“Besides being important for retirees like us, the transit system is vital for the handicapped, those who cannot afford a vehicle, and those who do not want to drive in bad weather to commute, shop and to travel to their health-related appointments.”

— **Dave and Carol Kyner**

“I am a 14-year-old eighth-grader at Central Junior High. I take the bus to the skateboard park, the indoor pool and crosstown friends’ houses. There is no way I would be able to do those things without the bus because both of my parents have to work during the day. The bus is good for the environment as well. If people use the bus to travel as opposed to driving their own cars, we don’t spend as much money



on gas and we will not pollute the environment as much.”

— **Johannes Reiber**

“My life and job literally depend on public transportation. I use both paratransit and fixed-route to get to the hospital three times a week for treatment of a chronic disease. I then use fixed-route transportation five times a week to get to and from my job.”

— **Andrew Stahmer**

“When I parked my car and began riding the T seven years ago, it was all about convenience, the environment and maybe a little about saving gas money. It turned out that saving money was the most significant byproduct of using public transportation. The obvious immediate savings came from not buying gas or paying for parking. With no need for auto repairs, tires and maintenance, now you are starting to talk big numbers. I saved even more by not needing to replace the

spare car, despite my raising two teens during those seven years.”

— **Marian Hukle**

“I moved to Lawrence from New York City two years ago. The reason I love this city is because of the way people in our community care for each other. While I have never ridden the T, I support all efforts to save public transportation because it is a vital service for members of our community. Our public transportation is a public good.

Public transportation is also a key component of building a more sustainable Lawrence, not only in terms of mitigating carbon emissions, but in regards to conservation of nonrenewable resources and reduction of dependence on foreign oil. If we want to become a leader in attracting green and sustainable businesses to Lawrence, we must demonstrate that we are authentically committed to the cause.”

— **Simran Sethi**

Excerpts from the Lawrence Journal-World.

“The voters have expressed their support for public transit in our community and I look forward to following through on our commitment to improving and enhancing our transit system in the years to come.”

— **Mayor Mike Dever**

Contact Us

(785) 312-7054
www.lawrencetransit.org

Administrative Office

PO Box 708 | Lawrence, KS | 66044
(785) 832-3465