

Pavement Condition Index Map: Lawrence, KS



City of Lawrence
PUBLIC WORKS

Map Updated: 12/2/2011

Pavement Condition Index (PCI)

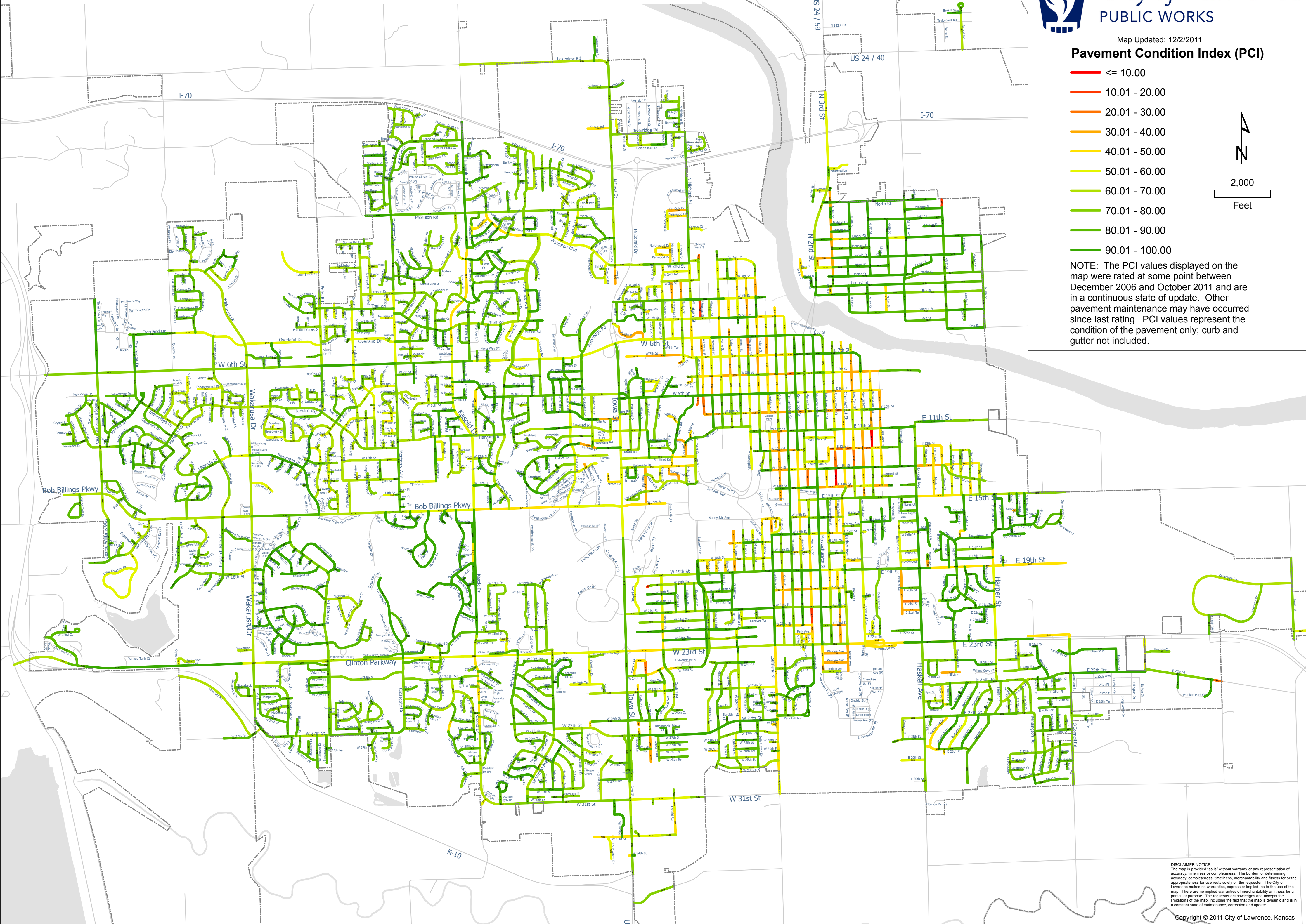
- <= 10.00
- 10.01 - 20.00
- 20.01 - 30.00
- 30.01 - 40.00
- 40.01 - 50.00
- 50.01 - 60.00
- 60.01 - 70.00
- 70.01 - 80.00
- 80.01 - 90.00
- 90.01 - 100.00



2,000

Feet

NOTE: The PCI values displayed on the map were rated at some point between December 2006 and October 2011 and are in a continuous state of update. Other pavement maintenance may have occurred since last rating. PCI values represent the condition of the pavement only; curb and gutter not included.



DISCLAIMER NOTICE:
The map is provided "as is" without warranty or any representation of accuracy, timeliness or completeness. The burden for determining accuracy, completeness, timeliness, merchantability and fitness for or the appropriateness for use rests solely on the requester. The City of Lawrence makes no warranties, express or implied, as to the use of the map. There are no implied warranties of merchantability or fitness for a particular purpose. The requester acknowledges and accepts the limitations of the map, including the fact that the map is dynamic and is in a constant state of maintenance, correction and update.