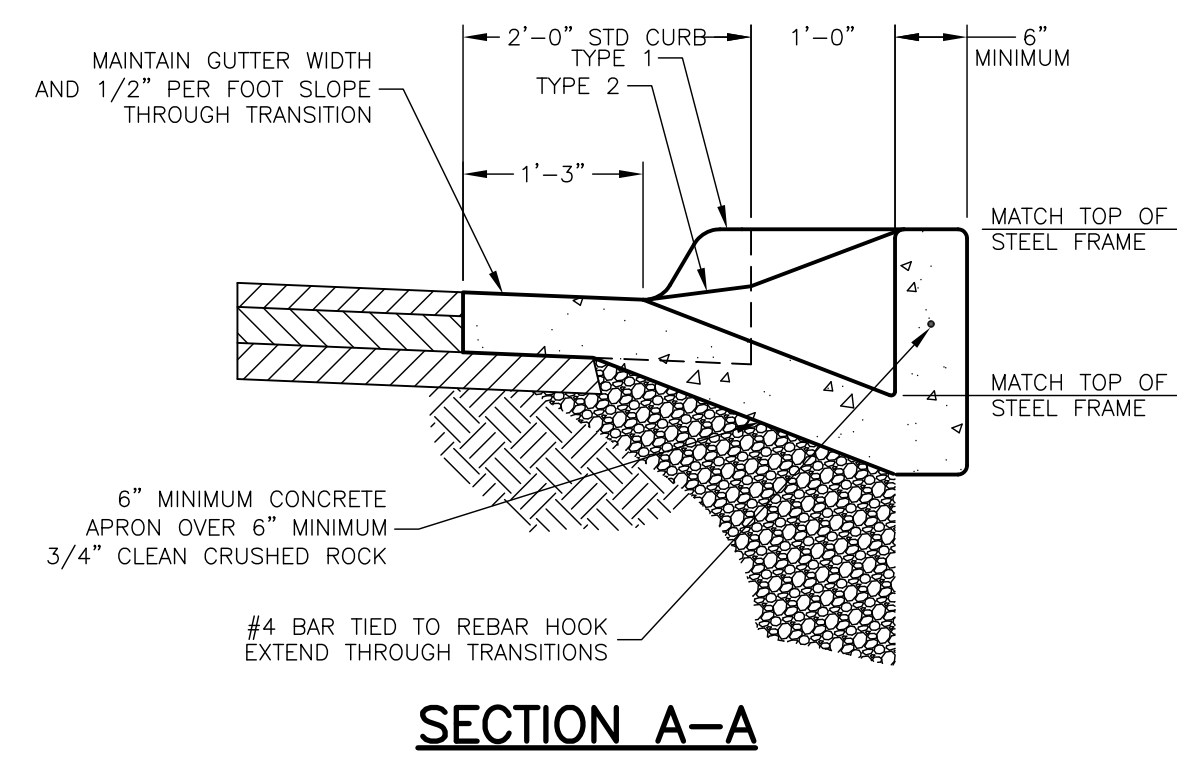
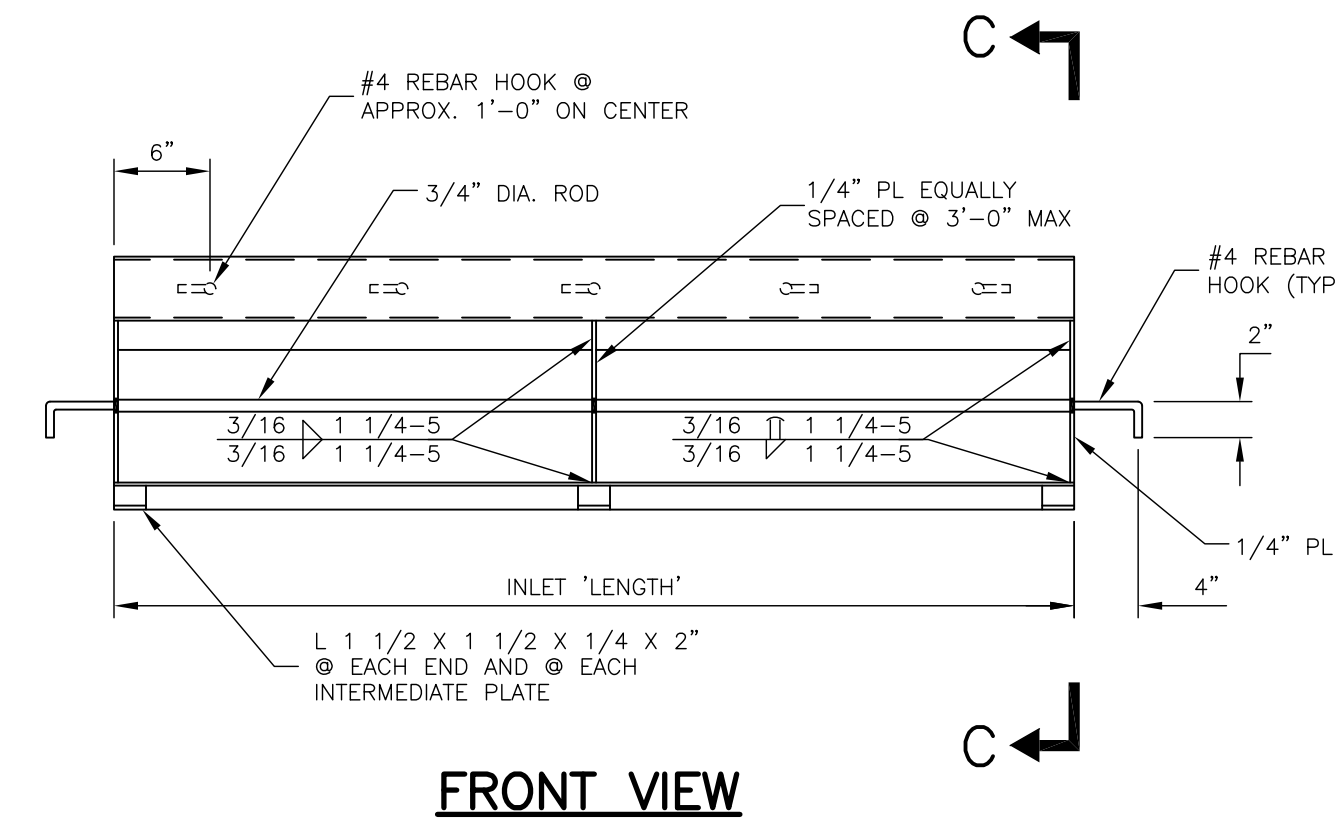


NOTES

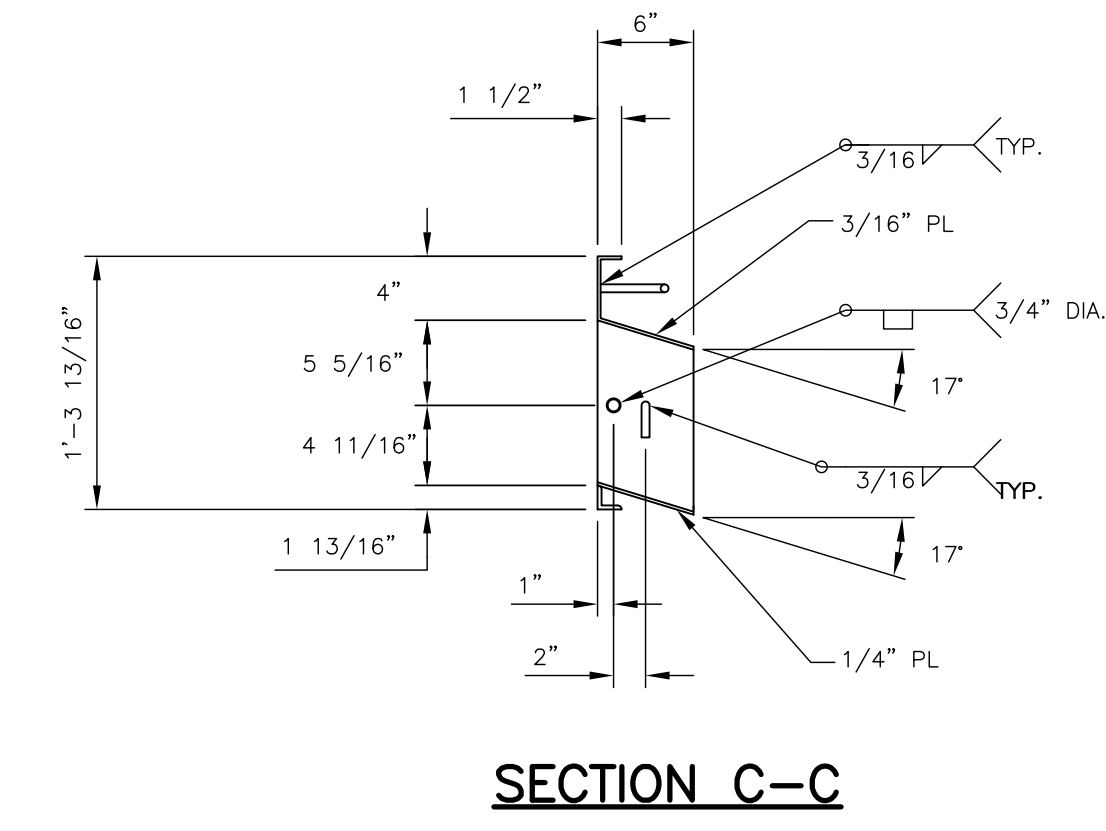
- STANDARD DRAWINGS SHALL APPLY ONLY TO STRUCTURES WITHIN THE FOLLOWING LIMITS:
 - INSIDE PLAN DIMENSIONS SHALL NOT EXCEED 40 SQUARE FEET.
 - WALL HEIGHT SHALL NOT EXCEED 10 VERTICAL FEET.
- THE MINIMUM WIDTH OF ALL STRUCTURES SHALL BE 4 FEET OR AS REQUIRED FOR PIPE CLEARANCE.
- STEPS ARE REQUIRED IN ALL STRUCTURES WITH WALL HEIGHT GREATER THAN 4 FEET.
- FRAMES, LIDS, CASTINGS, STEPS, INVERT, SUBSURFACE DRAINS, PIPE CONNECTIONS AND OTHER ITEMS SHOWN SHALL BE CONSIDERED SUBSIDIARY TO EACH STANDARD STRUCTURE.
- SUBSURFACE DRAINS ARE REQUIRED IN ALL STRUCTURES IN THE PUBLIC RIGHT-OF-WAY WITH WALL HEIGHT GREATER THAN 3 FEET. ONE DRAIN PER WALL SHALL BE INSTALLED ONLY IN WALLS WHICH ARE PERPENDICULAR TO THE STREET CENTERLINE.
- CURB INLETS WITH INSIDE PLAN DIMENSIONS EXCEEDING 25 SQUARE FEET SHALL HAVE TYPE II RING AND COVER. CURB INLETS IN PAVED AREAS SHALL HAVE TYPE II RING AND COVER.
- WHERE SIDEWALKS ADJOIN STORM SEWER STRUCTURES, #4 DOWELS SHALL BE PLACED 18" ON CENTER. DOWELS SHALL BE 18" LONG WITH 6" IN THE STRUCTURE TOP.
- CURB INLET DIMENSIONS SHALL BE STATED AS 'LENGTH' x 'WIDTH' ON ALL CONSTRUCTION NOTES.
- THE MINIMUM LENGTH OF CURB INLET OPENING SHALL BE 5 FEET.
- CURB INLET FRAME TOP CHANNEL SHALL BE FABRICATED FROM 0.15 MAX. CARBON, FORMING QUALITY, OR A36 HOT ROLLED STEEL PLATE.
- ALL FLAT PLATE AND RODS SHALL BE M1020 MERCHANT QUALITY OR A36 HOT ROLLED STEEL.
- ALL CURB INLET FRAME MATERIALS SHALL BE FREE FROM RUST AND MILL SCALE.
- ALL WELDING SHALL CONFORM TO THE PROVISIONS OF THE AWS "STRUCTURAL WELDING CODE."
- CURB INLET FRAMES SHALL BE HOT-DIP GALVANIZED AFTER FABRICATION PER ASTM A123.
- CURB INLET FRAMES SHALL BE SLOPED TO MATCH THE STREET CENTERLINE GRADE.
- STAMPING TOOLS SHALL BE APPROVED PRIOR TO USE. A FULL SIZE FABRICATION PATTERN MAY BE OBTAINED FROM THE PUBLIC WORKS DEPARTMENT. FOR CAST-IN-PLACE INLETS, A STAMPING TOOL MAY BE BORROWED FROM THE DEPARTMENT PER AN APPROVED SCHEDULE.
- ALL DIMENSIONS AND SIDE SLOPES SHOWN WITHIN THE "TYPICAL TRENCH SECTION DETAILS" ARE TYPICAL. ANY DEVIATION FROM THESE DIMENSIONS MUST BE APPROVED BY THE PROJECT ENGINEER PRIOR TO BEGINNING THE TRENCHING WORK, OR AS SOON AS PRACTICABLE.
- FLOWABLE FILL QUANTITY IS CALCULATED BASED ON A TYPICAL TRENCH SIDE SLOPE OF 1:1. A SIDE SLOPE FLATTER THAN 1:1 (IF REQUIRED TO ENSURE STABILITY AND SAFETY OF THE TRENCHES) MUST BE APPROVED BY THE PROJECT ENGINEER IN THE FIELD PRIOR TO BEGINNING EXCAVATION FOR TRENCHES, OR AS SOON AS PRACTICABLE. THE INTENT IS TO KEEP THE FLOWABLE FILL QUANTITY TO A MINIMUM.



SECTION A-A
CURB TRANSITION

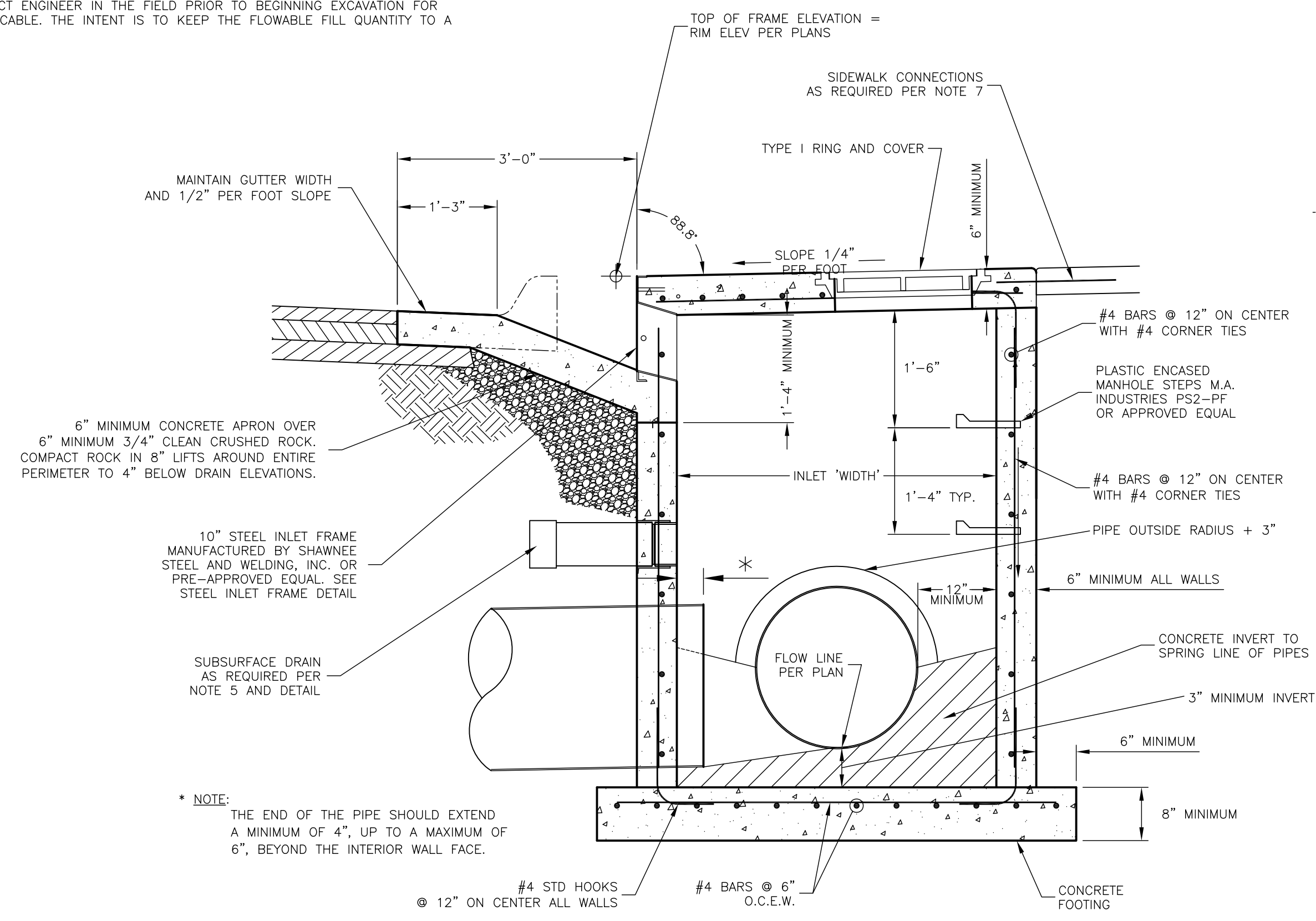


FRONT VIEW

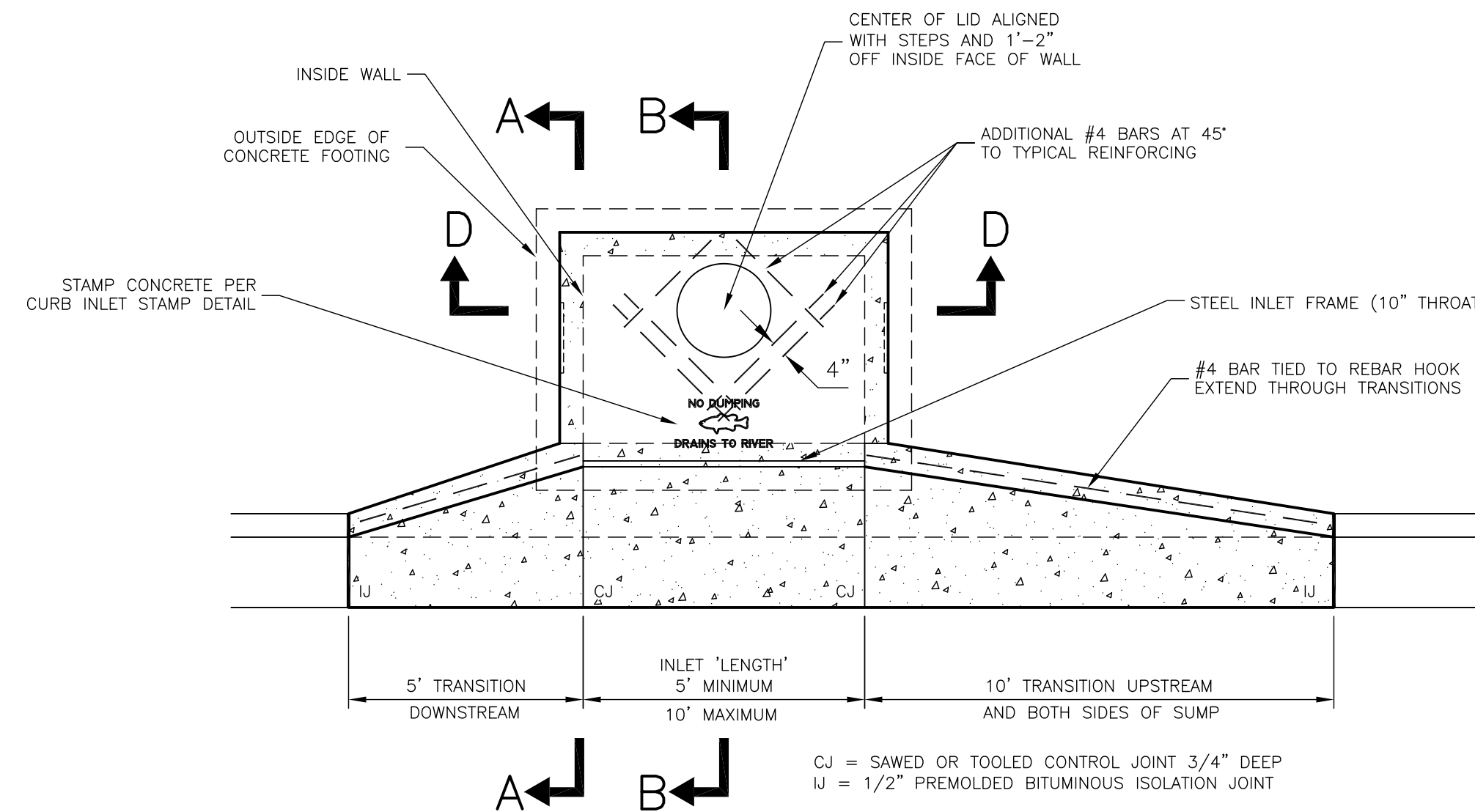


SECTION C-C

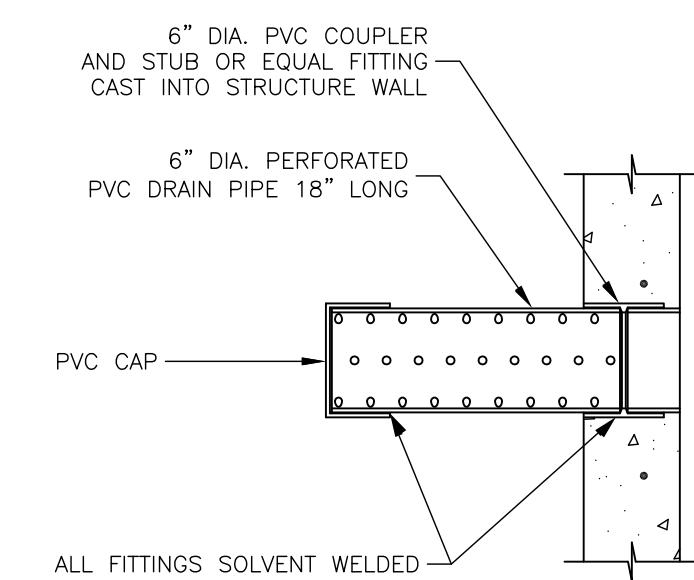
STEEL INLET FRAME



SECTION B-B

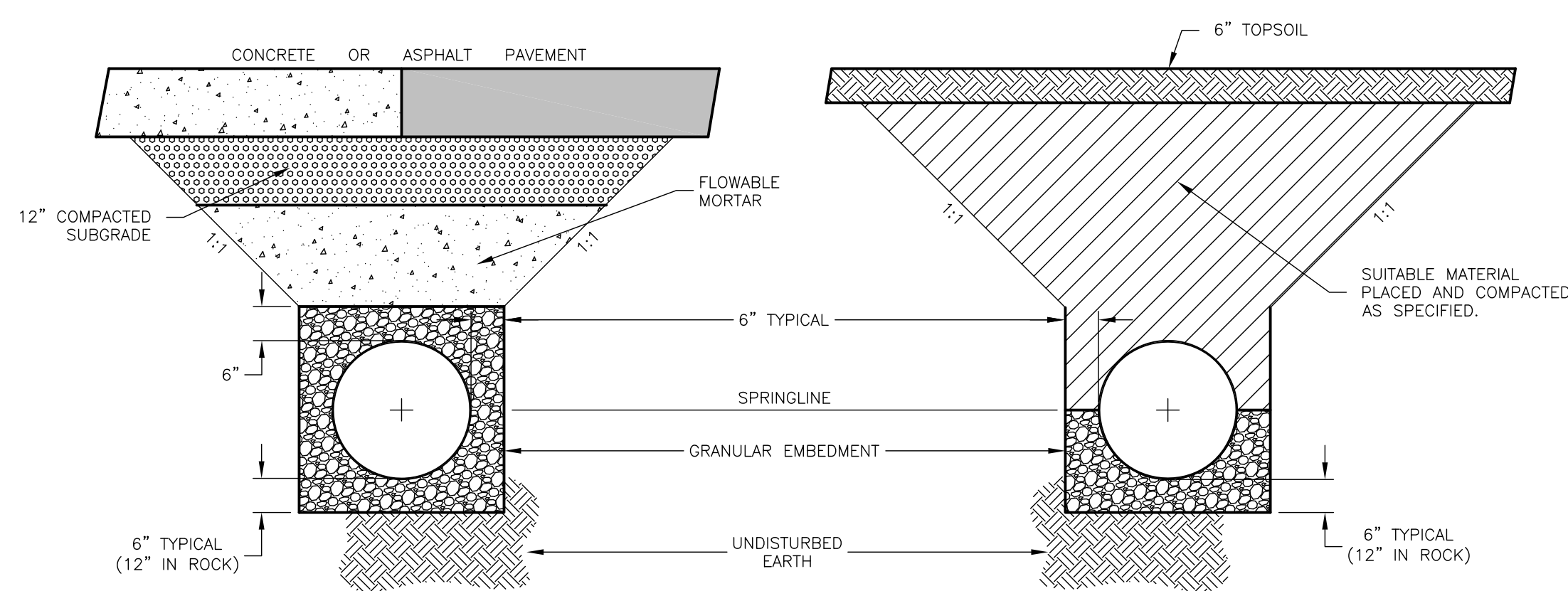


PLAN
STANDARD CURB INLET

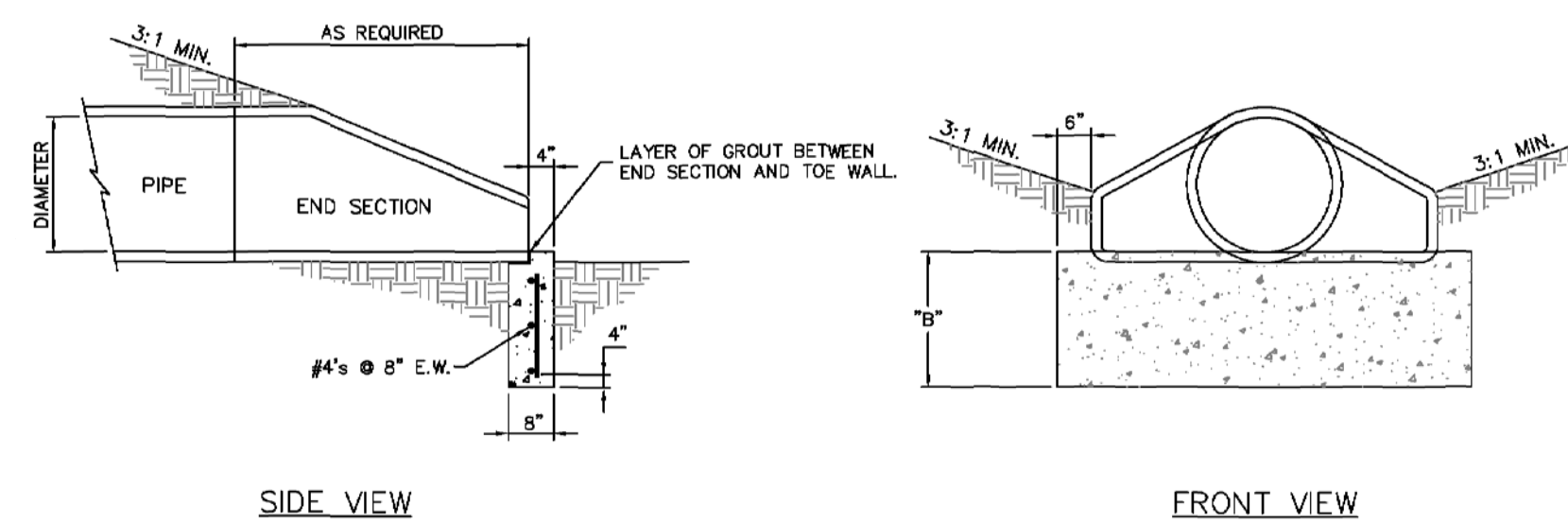


SECTION

SUBSURFACE DRAIN



UNDER AND WITHIN 2' OF STREET AND SIDEWALK PAVING
TYPICAL TRENCH SECTIONS

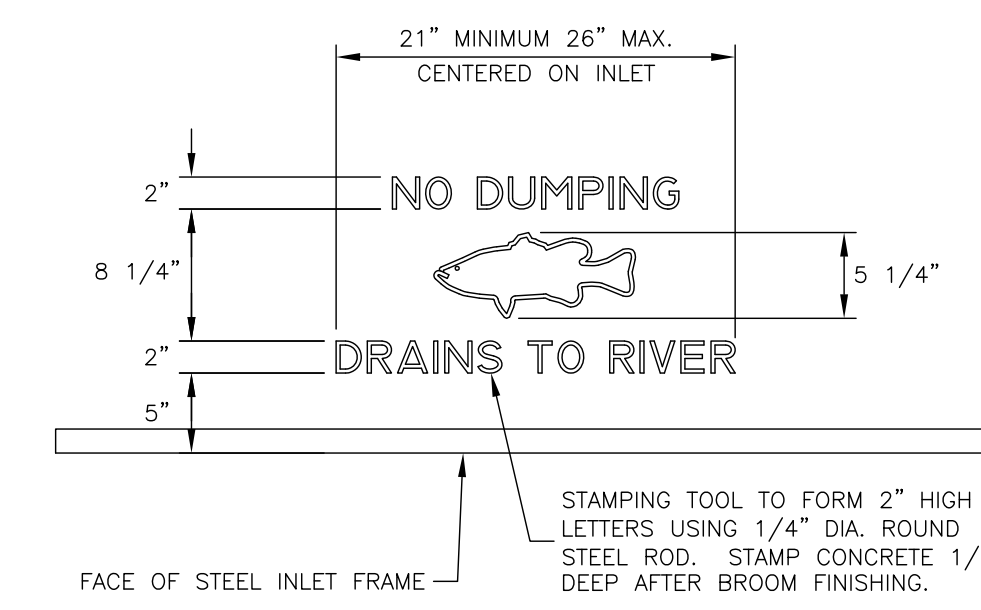


- NOTES:
- THE DEPTH OF THE TOE WALL SHALL BE PER TABLE. IF BEDROCK IS ENCOUNTERED A MINIMUM OF 12" INTO BEDROCK IS REQUIRED.
 - ALL CONCRETE SHALL BE KCMMB-4K.

TABLE

TOE WALL DEPTH	"B"
12" - 21"	18"
24" - 48"	24"
54" - 66"	36"

STANDARD END SECTION



PLAN

CURB INLET STAMP

SHEET _____ OF _____

DATE	BY	REVISION
12-16-10	LJM	TYPICAL TRENCH SECTIONS REVISED AND NOTES ADDED
09-10-09	LJM	REPLACES ALL PREVIOUS VERSIONS OF STORM SEWER DETAILS
08-12-09	LJM	TYPICAL TRENCH SECTIONS DETAIL REVISED



STANDARD DETAILS FOR
STORM SEWER CURB INLETS

SHOEB M. UDDIN CITY ENGINEER DAVID L. CORLISS CITY MANAGER