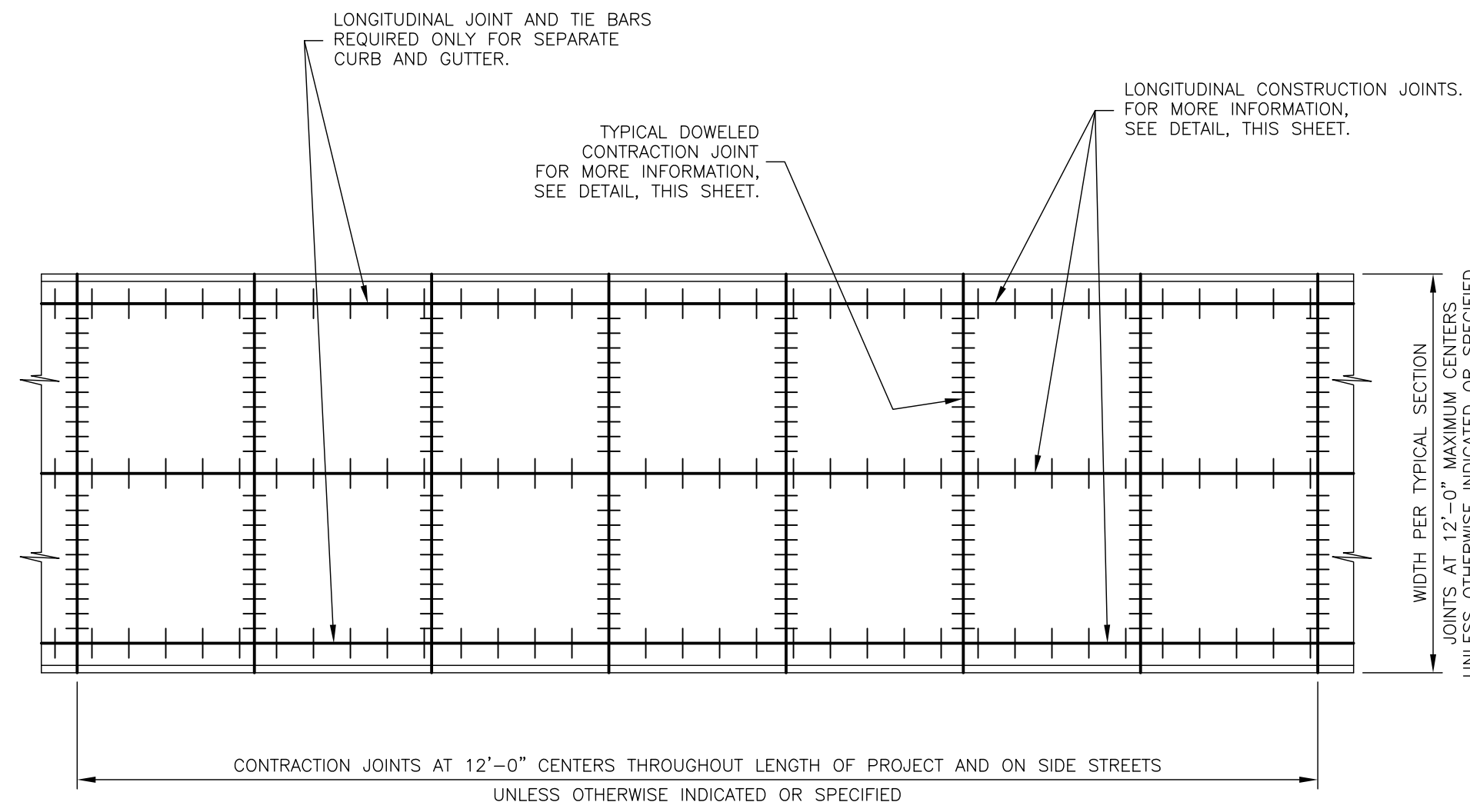
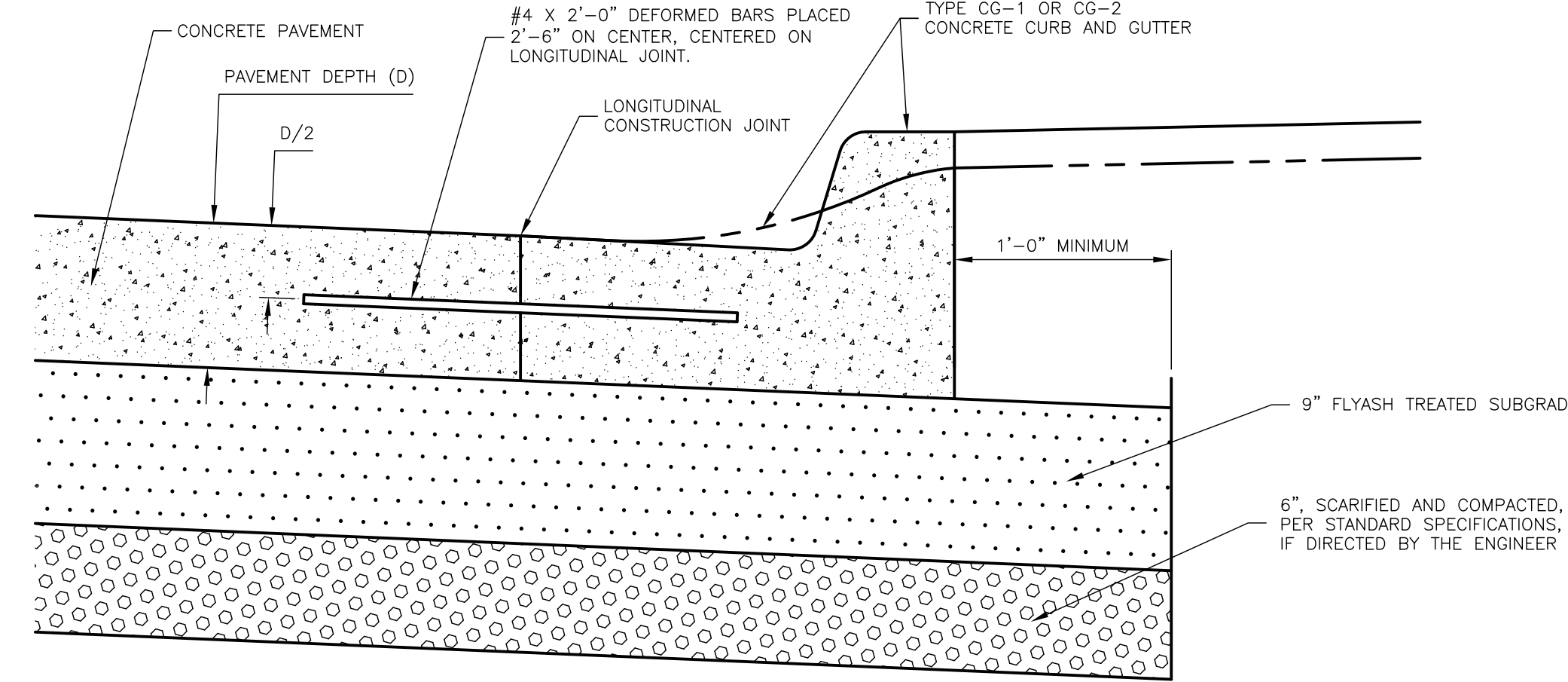


NOTES:

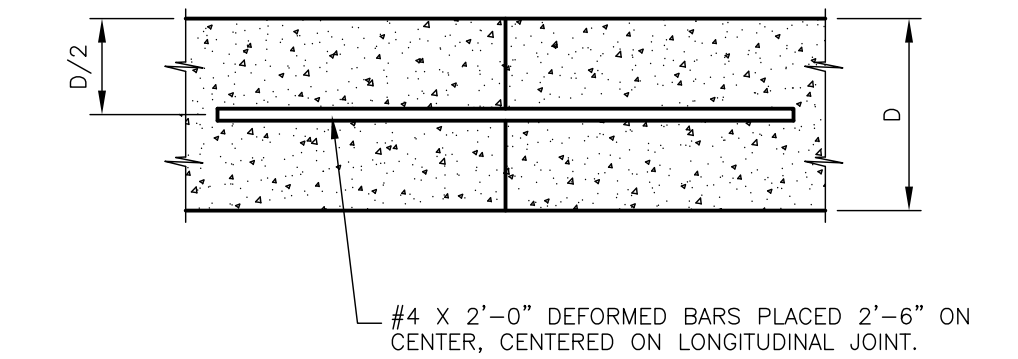
1. ALL BARS, REINFORCEMENT CHAIRS AND JOINT MATERIAL ARE SUBSIDIARY TO THE PRICE BID FOR PORTLAND CEMENT CONCRETE PAVEMENT.
2. CURB AND GUTTER ADJOINING PORTLAND CEMENT CONCRETE PAVEMENT MAY, AT THE CONTRACTOR'S OPTION, BE PLACED INTEGRAL WITH PAVEMENT OR SEPARATELY. IF PLACED SEPARATELY, SEE DETAIL, THIS SHEET.
3. PAVEMENT JOINTS SHALL BE CONTINUED THROUGH CURB AND GUTTER. JOINTS IN THE PAVEMENT AND CURB AND GUTTER SHALL BE SEALED IN ACCORDANCE WITH STANDARD SPECIFICATIONS.
4. ISOLATION JOINTS IN THE CURB AND GUTTER ARE TO BE PLACED OPPOSITE ISOLATION JOINTS IN THE PORTLAND CEMENT CONCRETE PAVEMENT.
5. ISOLATION JOINTS SHALL BE PLACED AT LOCATIONS INDICATED ON THE PROJECT PLANS OR AS DIRECTED BY THE CITY ENGINEER OR AN AUTHORIZED REPRESENTATIVE.



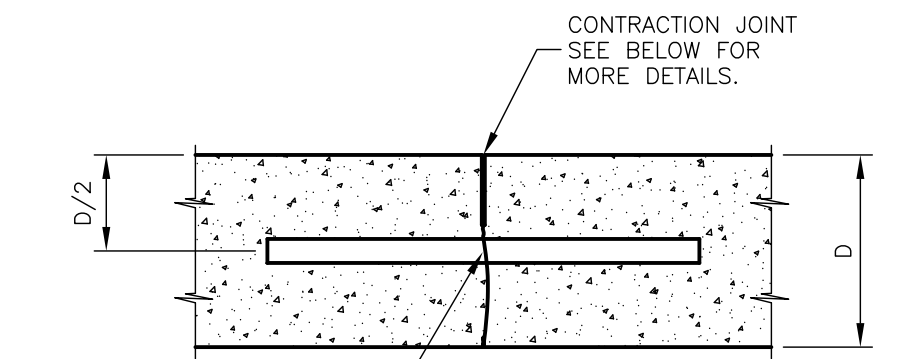
JOINT PLAN



SEPARATE CURB AND GUTTER



LONGITUDINAL CONSTRUCTION JOINT

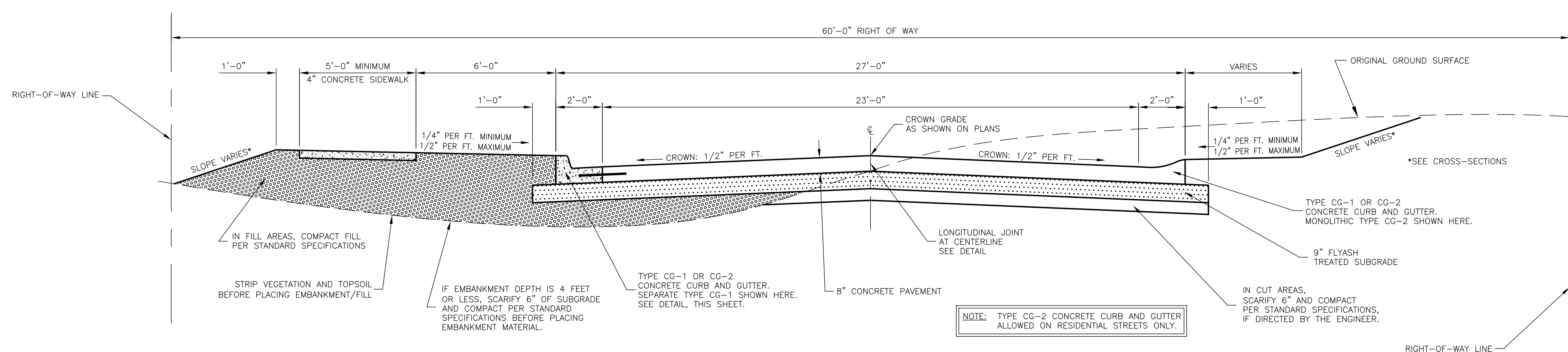


ALL DOWELS SHALL BE 18" LONG, PLACED 12" ON CENTER AND CENTERED ON CONTRACTION JOINT. SEE CHART AT LEFT FOR APPROPRIATE DOWEL DIAMETERS.

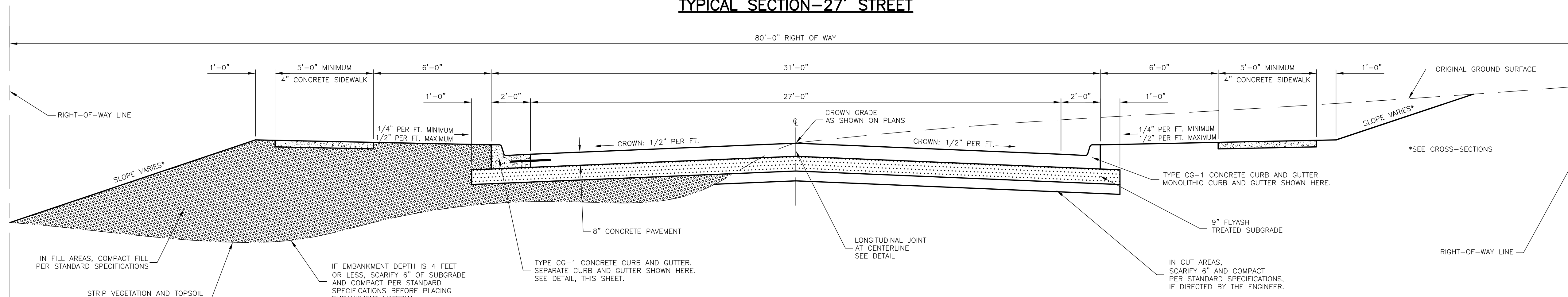
DOWEL SIZING CHART

BAR DIAMETER	PAVEMENT DEPTH (D)
1"	8"
1 1/4"	10"
1 1/2"	12"

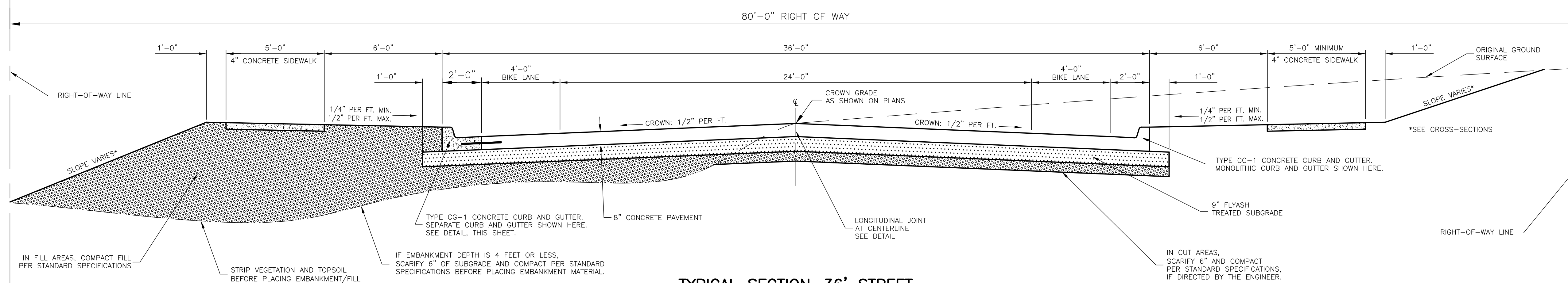
DOWELED CONTRACTION JOINT



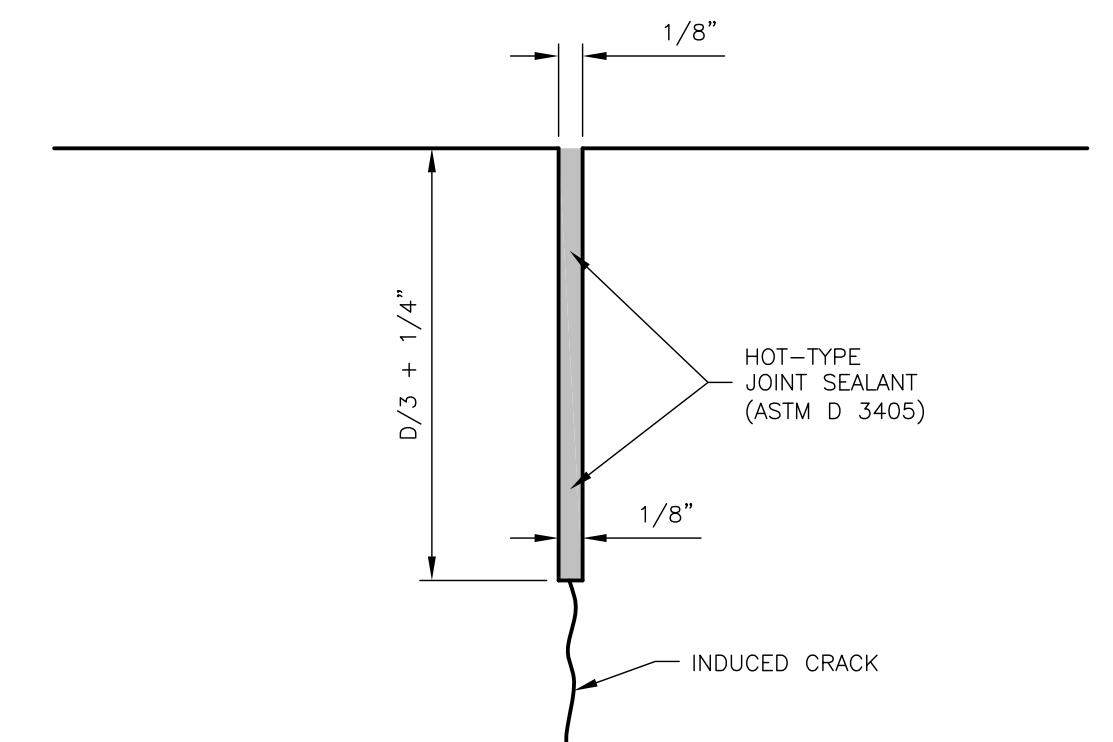
TYPICAL SECTION-27' STREET



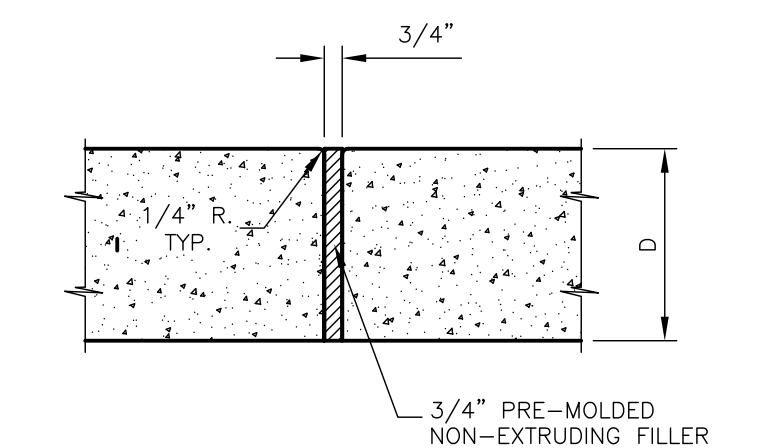
TYPICAL SECTION-31' STREET



TYPICAL SECTION-36' STREET



ENLARGED VIEW OF CONTRACTION JOINT



ISOLATION JOINT

DATE	BY	REVISION
09-10-09	LJM	REPLACES ALL PREVIOUS VERSIONS OF PORTLAND CEMENT CONCRETE STREET DETAILS
07-22-09	LJM	REPLACES ALL PREVIOUS VERSIONS OF PORTLAND CEMENT CONCRETE STREET DETAILS
04-03-09	LJM	REPLACES ALL PREVIOUS VERSIONS OF PORTLAND CEMENT CONCRETE STREET DETAILS
04-15-08	LJM	REPLACES ALL PREVIOUS VERSIONS OF PORTLAND CEMENT CONCRETE STREET DETAILS



STANDARD DETAILS FOR PORTLAND CEMENT CONCRETE STREETS

SHOEB M. UDDIN CITY ENGINEER DAVID L. CORLISS CITY MANAGER