

TABLE OF CONTENTS

STATEMENT OF INTEREST	COVER LETTER
PROJECT TEAM	TEAM DIAGRAMS
FIRM PROFILES & RESUMES	FIRM AND PERSONNEL INFORMATION
PROJECT APPROACH	PHASE I DESIGN, PHASE II IMPLEMENTATION
RELEVANT PROJECTS	TEAM EXPERIENCE
URBAN DESIGN AND STREETSCAPING	GREATER DOWNTOWN AREA PLAN 20TH STREETSCAPE DOWNTOWN LAWRENCE BEAUTIFICATION NICOLLET MALL WEST PENNWAY STREETSCAPE LINEAR PARK AND TRAIL MINNEAPOLIS CENTRAL LIBRARY BALTIMORE WYANDOTTE STREETSCAPE MOVEMENT ON MAIN BOWMONT PARK
PUBLIC ART COLLABORATIONS	WATERSHED+ FIRE HYDRANT DRINKING FOUNTAINS TROOST BRIDGE ART PRAIRIE LOGIC LIMELIGHT TRANSIT OASIS PUBLIC ORCHARD PROMENADE PEDESTRIAN STRANDS LANDSCAPED EDGE LIFT STATION CULTIVATED WILDERNESS FRONT STREET MARKERS
PUBLIC ART ADMINISTRATION	WATERSHED+ RESIDENCY JOHNSON COUNTY PUBLIC ART MASTER PLAN AMERICA: NOW AND HERE MOVING IN MOVING OUT FREIGHTHOUSE ART
IN-HOUSE ART FABRICATIONS	PULSE OAK GARAGE SIGNAGE A.L.E./BOTWIN BUILDING CAUSE + EFFECT BROADWAY BRIDGE
WORKING WITH NON-PROFIT AND ARTS CULTURE ORGANIZATIONS	LA ESQUINA SOCIETY FOR CONTEMPORARY PHOTOGRAPHY BEMIS GARDEN HARDESTY RENAISSANCE MASTER PLAN HABITAT FOR HUMANITY PROTOTYPE HOUSING NEIGHBORWORKS LAWRENCE ARTS CENTER
REFERENCES	LISTED BY PROJECT CATEGORY

1 October, 2014

Diane Stoddard, Assistant City Manager
City of Lawrence
6 East 6th Street
P.O. Box 708
Lawrence, KS 66044

Ms. Stoddard:

Thank you for the opportunity to submit qualifications for the 9th Street Corridor Project. The project represents a pivotal urban design opportunity for the City of Lawrence and its recently established Cultural District to strengthen the connections between Massachusetts Street, the East Lawrence Neighborhood, and a newly established Warehouse Arts District to the east. Through a network of dynamic stakeholder groups, including a national grant partnership with Artplace America, this project has the potential to become truly visionary. Placing artists and a Creative Team in a collaborative role with civil engineers and city planners, the City of Lawrence will become a national leader in how infrastructural improvements can serve to culturally reinforce an authentic sense of place within our urban communities.

Urban fabric, including the environs surrounding the 9th Street Corridor, is sensitive in nature. The Downtown Lawrence Neighborhood, the west “bookend” of the project site, has always thrived as Lawrence’s established central business district and offers a density of layered, mixed-use development. The East Lawrence Neighborhood, on the other hand, has historically been a working class and creative community and, today, operates largely at a grass roots level. Alongside shared excitement for the creative redevelopment of 9th Street and multi-modal pedestrian access to downtown, concerns surrounding gentrification have been expressed by some within the East Lawrence community.

Striking a balance between the excitement surrounding the project’s artistic aspirations and the considerations of the East Lawrence Neighborhood is key to the project’s success. In fact, developing a project approach that integrates both national cultural leadership and hyper-local sensitivity as a singular gesture should be the overarching goal for the project. This can only be achieved by engaging multiple stakeholder groups through a creative process that values inclusivity, creativity, and a respect for diversity.

As a principal of el dorado inc, a firm recognized nationally for urban design and public art implementation, and as an urban design instructor at the Kansas University School of Architecture, Design and Planning, I bring a focused perspective to this project. Through recent art/ urban design collaborations with artists Sans façon, Janet Zweig and Theaster Gates, our practice has been privileged to work on some of the most progressive public art and Creative Placemaking projects in the country. On a regional level, through compelling, multi-disciplinary teams, we have been commissioned to lead the most innovative streetscaping projects in Kansas City’s Urban core.

Perhaps more importantly, I feel uniquely qualified for this project as a two-time Lawrence resident. In 1999 I bought my first house at 2216 New Hampshire Street. During my strolls and bike rides to Massachusetts street, I explored the streets and alleys of East Lawrence exhaustively. After a stint in Kansas City, I returned to Lawrence again, this time at 2146 New Hampshire Street with a family of four! In short time, my kids grew to love East Lawrence as much as I did. East Lawrence has shaped my love and passion for urban neighborhoods. The perceived excitement and trepidation for the 9th Street Corridor project is tangible for me.

So, it is with great enthusiasm and sensitivity that I respond to this RFP as the Urban Design Lead for this project. el dorado has assembled a cross-disciplinary team that combines national cultural leadership with local creative thinkers. As Lead Artist, Sans façon will join us from Calgary, leading a Creative Team with unmatched leadership in Creative Placemaking, artist/ engineering collaborations and innovative community engagement strategies. As an Urban Landscape Consultant, Coen+Partners will join us from Minneapolis and introduce landscape strategies that catalyze civic engagement and shared environmental responsibility. Bartlett and West will bring expertise in landscape and civil engineering, and an intimate understanding of best practices and procedures in Lawrence, Kansas. Local historian Dennis Domer will help us understand the nuanced history of East Lawrence and local plant botanist Kelley Kindscher will bring his knowledge of indigenous landscaping strategies and community garden outreach to the project. Collectively, our team will approach the 9th Street Corridor as a platform for civic engagement, a cultural destination for visitors and a local neighborhood asset alike.

Our team will work closely with the Lawrence Arts Center and Project Stakeholders to meet the artistic goals of the Artplace America grant while simultaneously working closely with the City of Lawrence to ensure technical compliance for the 9th Street Corridor redesigned as an environmentally sustainable Complete Street . The resulting project will serve as a new streetscaping model for all cities to aspire towards: a network of civic infrastructure that, through local and national cross-disciplinary artist collaboration, proactively serves the needs of the street and its urban community.

Of course, our team is incomplete without the input from the City of Lawrence and its diverse set of stakeholders for this project. Speaking on behalf of the entire project team, we truly look forward to the opportunity to realize this project for you and with you.

Please don't hesitate to contact me with any questions or concerns.

Thanks again,



Josh Shelton, AIA
principal, el dorado inc
josh@eldo.us
816.674.8481

PROJECT TEAM:



..... **URBAN DESIGN: el dorado inc**

- Provide overall project coordination and management for entire project team and serve as communication and contractual point of contact with client group and primary stakeholders
- Provide comprehensive design leadership for the design of the 9th Street Corridor from Massachusetts Street to Delaware Street
- Lead Project Programming Phase, including input meetings with client group, primary stakeholders, and local/ regional arts community. Collaborate with Lead Artist to execute Artist Selection Process, including the development of RFQ for artist commissions related to permanent installations for the project site
- Lead Schematic Design Process including initial design directions for landscaping, streetscaping, infrastructural improvements, and art integration. Continue coordination of stakeholder meetings and client group communication. Coordinate and/ or provide PR materials for client group.
- Lead Design Development Process including further design development of design directions for landscaping, streetscaping, infrastructural improvements, and art integration. Continue coordination of stakeholder meetings and client group communication. Initiate Cost Estimating process with City of Lawrence and Civil Engineer. Coordinate and/or provide PR materials for client group.
- Lead Construction Document phase of project with Civil Engineer, selectively soliciting input/review from project consultants. Continue coordination of stakeholder meetings and client group communication.
- Coordinate all project stakeholder outreach in collaboration with the City of Lawrence.



..... **LEAD ARTIST: Sans Façon**

- Serve as primary point of contact to Urban Designer for all project art-integration matters.
- With input from Creative Team serve as primary collaborative partner for the conceptual design of the 9th Street Corridor (primarily during the Programming, Schematic Design and Design Development Phases)
- Coordinate communication and collaboration of identified Creative Team
 - a. Luke Dubois, technical support for mixed media art infrastructure
 - b. Dennis Domer, Lawrence historian
 - c. Local and regional artists to be engaged during the project process
- Attend selected stakeholder meetings and client group meetings, report on art-related issues.
- Assist Urban Designer with Artist Selection Process, including the development of RFQ for artist commissions related to permanent installations for the project site,
- Lead Creative Team to serve as a collaborator with Urban Designer and other consultants towards the design of the 9th Street Corridor from Massachusetts Street to Delaware Street.
- With input from Creative Team, provide curatorial/ site integration input/ advisement for selected artists commissions



..... **CIVIL ENGINEER/ ELECTRICAL ENGINEER/ TECHNICAL LANDSCAPE DESIGN: Bartlett & West**

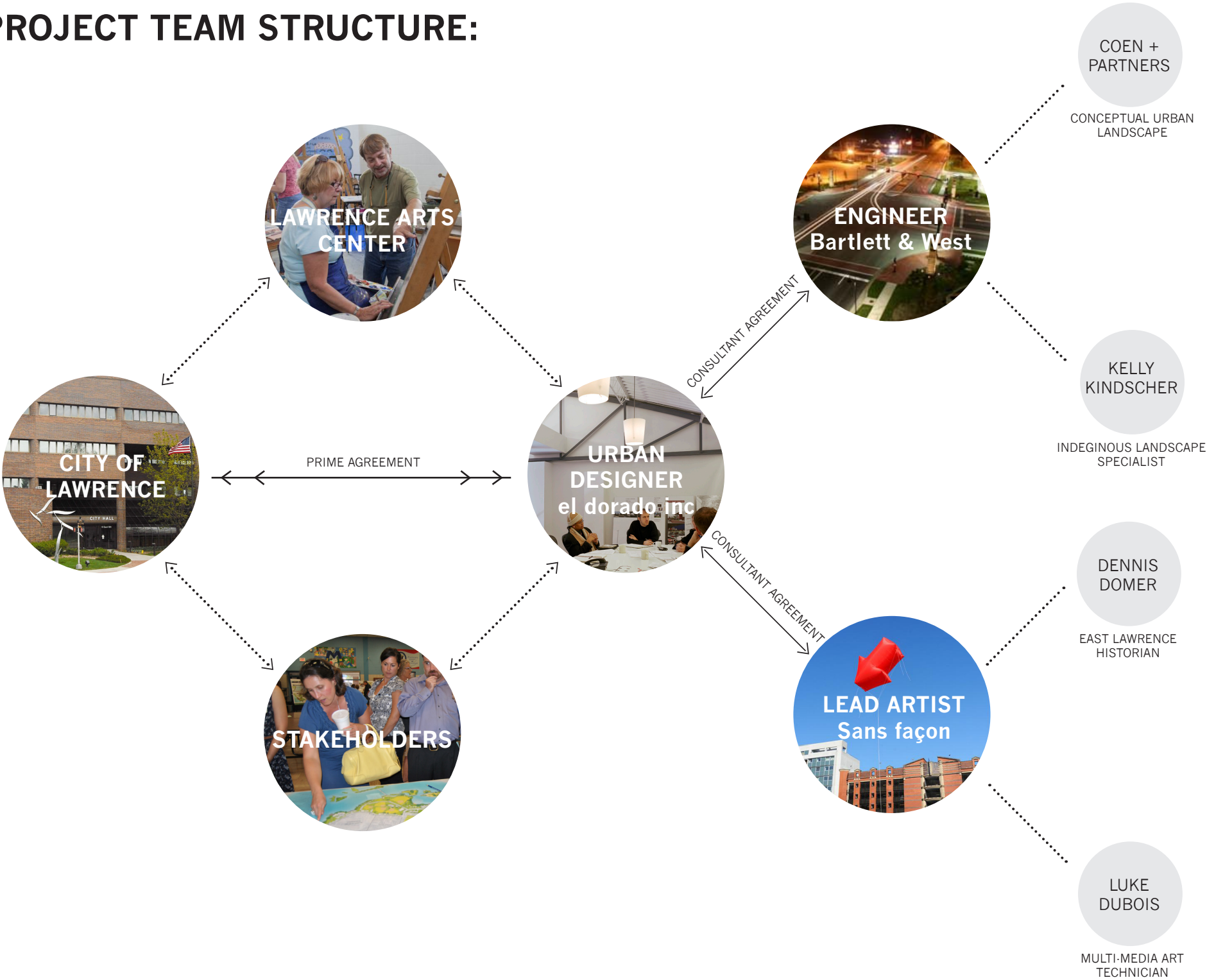
- Serve as primary point of contact to Urban Designer for all Civil/Electrical/Technical Landscape design/engineering matters.
- Serve as primary collaborator for design of the 9th Street Corridor (during all Phases)
- Attend selected stakeholder meetings and client group meetings, report on landscape design issues.
- Serve as licensed professional of record for all final landscaping, electrical, and civil drawings for streetscape design and art integration design

LANDSCAPE ARCHITECT, CONCEPTUAL DESIGN: Coen + Partners

- Serve as primary point of contact to Urban Designer for all landscaping design matters.
- Serve as primary collaborator for conceptual design of the 9th Street Corridor (primarily during the Programming, Schematic Design and Design Development Phases)
- Attend selected stakeholder meetings and client group meetings, report on landscape design issues.
- Remain available during Construction Documentation Phase and Construction Phase for questions from Civil Engineer/Client Group/Primary Stakeholders
- Coordinate input from other Landscape Design Advisors during Conceptual Design
 - a. Kelley Kindscher, native plant specialist
 - b. Bartlett & West, Civil Engineer



PROJECT TEAM STRUCTURE:





510 Avenida Cesar E. Chavez
Kansas City, MO 64108
816.474.3838
www.eldo.us

el dorado inc is cross-disciplinary design firm, specializing in Architecture, Public Art, Urban Planning, and Infrastructural Enhancements. The practice is comprised of architects, artists, and industrial designers and leverages a “hands-on” approach to projects through an in-house fabrication shop that is responsible for multiple large-scale public art projects in the public realm. At the core of el dorado’s collective sensibility is a collaborative approach that effectively engages clients, municipalities, artists, stakeholders, professional consultants, and builders.

El dorado’s work has been recognized with more than 30 AIA regional design awards and has been published nationally and internationally. The firm is a recognized leader in public art collaborations and public art facilitation and have lectured internationally on the vital role Creative Placemaking plays within city planning and urban design. El dorado’s office recently contributed to the development of Johnson County’s Public Art Masterplan and is currently working with the City of Austin to maximize the impact of public art on municipal planning efforts and the design of city infrastructure.



Sans façon

1015 17th Ave SE
Calgary, AB T2G 1J6 Canada
++(0)403.268.4752
www.sansfacon.co.uk

Artist and architect duo Sans façon, (Tristan Surtees and Charles Blanc), explore, through their art, the relationship between people and places. They work internationally on projects ranging from ephemeral performances and permanent pieces in public spaces, to developing and implementing strategies involving artists in the rethinking and re-qualification of specific places.

The majority of their work renews awareness and tempts interaction with the surroundings and is developed in close collaboration with communities, organisations and individuals including City councils, theatre companies, architects and composers.

Their current project Watershed+ originated from the desire to strengthen the connection between the public and their watershed – natural and constructed. Unique throughout North America, Watershed+ establishes a standard by which to work where shared perspectives, creative and professional, find common ground. Hosted by the Water Services within Utilities and Environment Protection (UEP) department of the City of Calgary, Watershed+ represents a major step in implementing new working methods and processes by embedding artists and, more specifically, their creative process within City work from the conception stage of projects.



Doing what we do best at Bartlett & West means building strong, lasting relationships with our clients and our employees. Each of these relationships starts with a common level of trust and we build from there by being accessible and responsive, making sure we understand employee and client needs, being proactive in our communications, and showing integrity in all that we do.

Bartlett & West site specialists support developers, architects, businesses, and institutions in navigating planning, zoning, permitting, drainage, paving, and building considerations of a particular location. Drawing from broad experience of site types and intimate knowledge of local requirements, they help clients meet their building needs. Our stormwater professionals work with the natural environment to reduce erosion and maintain water quality. Their expertise helps control flooding, reduce pollution, and preserve the environment.



COEN+PARTNERS

400 N 1st Ave #210
Minneapolis, MN 55401
612.341.8070
www.coenpartners.com

Coen+Partners is a multi-disciplinary landscape architecture and urban design practice based in Minneapolis. Through a process of collaboration, experimentation and questioning, our work embraces the complexities of each site with clarity and ecological integrity. We seek not to recreate nature in our work, but rather to redefine natural frameworks and transform them into innovative solutions for comprehensively designed environments that reverberate from a specific urban, architectural, and ecological context.

Throughout our firm's history, Coen+Partners has pushed the boundaries of the Landscape Architectural profession. Coen+Partners has garnered praise for work ranging in scale from master planned communities to church courtyards, built, planned, and conceptual. The team's built work has been recognized nationally by the AIA, ASLA, and the Architecture League of New York and has been exhibited at Walker Art Center and the Carnegie Museum of Art.





JOSH SHELTON AIA

principal - el dorado inc, project lead

Josh has practiced architecture in San Antonio, Texas and in Lawrence, Kansas with Dan Rockhill and Associates. Josh joined el dorado inc in 1999 and became a principal in 2002. He served as the firm's president from 2004-2011. He currently serves as the Director of Operations and manages a wide variety of projects, both in scale and typology.

Josh's projects have been published nationally and internationally and have been recognized by local, regional, and national design awards programs. Josh holds a faculty position with the University of Kansas School of Architecture Design and Planning and teaches an award winning Urban Design Studio with a regional reputation for engaging non profit organizations specializing in community development. He also serves as a public art commissioner for the Johnson County Public Art Commission and as president of the Arts Council of Johnson County.

EDUCATION:

1995 University of Tennessee, Knoxville, TN: BArch
1994 Royal Melbourne Institute of Technology,
Melbourne, Australia

RELEVANT URBAN DESIGN/PUBLIC ART EXPERIENCE:

- Hardesty Renaissance Master Plan: Kansas City, Missouri—master plan of 18.5 acre former Federal Complex
- West Pennway Streetscape. Kansas City, MO—complete street design
- Pulse: Kansas City, Missouri—public art collaboration and installation in downtown parking garage
- Moving In Moving Out: Topeka, Kansas—art facilitation for multi-artist exhibition showcasing site-specific art
- Front Street Markers: Kansas City, Missouri—public art collaboration and fabrication in the Northeast Industrial District
- Freighthouse Art Project: Kansas City, Missouri—public art facilitation and installation in the Crossroads Art District
- La Esquina: Kansas City, Missouri—Charlotte Street Foundation mixed media exhibition space
- Limelight Saturday Night: Kansas City, Missouri—public art installation



DAVID DOWELL AIA

quality control manager - el dorado inc

David joined el dorado inc as a partner in 1998. Before that he spent 2 years at BNIM and 3 years in Europe traveling, teaching and working on a range of public building competitions. His primary focus is on public space, adaptive re-use and community-sensitive projects.

David is active in academia, forging a productive link between critical practice and the study of architecture. He most recently co-founded a graduate design/build studio at Kansas State University. He has also taught at University of Kansas, Washington University in St. Louis, Lawrence Institute of Technology and the Technical University in Dresden, Germany. He has been a GSA National Peer Reviewer since 2011.

David can often be found roaming the last remaining intact tallgrass prairie ecosystem, the Flint Hills of Kansas. There, he is working on 4 projects (2 in design, 2 in construction) seeking harmony between tradition, landscape and contemporary life.

RELEVANT URBAN DESIGN/PUBLIC ART EXPERIENCE:

- America: Now and Here. Kansas City, MO.—public art facilitation for travelling exhibit
- Cause and Effect. Kansas City, MO—public art installation
- Pedestrian Strands. Kansas City, MO—public art enhancements to pedestrian bridge
- Landscaped Edge. Kansas City, MO—public art enhancements to pedestrian bridge
- Troost Bridge. Kansas City, MO—public art enhancements to pedestrian bridge
- 20th Street Streetscape. Kansas City, MO—complete street design
- 17th Street Streetscape. Kansas City, MO—complete street design
- Baltimore/Wyandotte Streetscape. Kansas City, MO.—complete street design
- Kansas City Art Institute Fiber Department. Kansas City, MO. 2012.



CHRIS BURK

project manager - el dorado inc

In 1999, Chris' joined el dorado and industrial design and fabrication. This started as simple fabrication work, creating small accent features such as light fixtures and chairs, and grew into a developed ability to generate entire furnishing systems. Chris now functions as manager of our fabrication studio in addition to serving as a project designer. He applies his learned materials knowledge gained through the production and installation process, and extends it towards architecture specialty design. Because of his understanding of the close relationship between design and construction, he is able to interpret initial schematic designs into practical yet innovative solutions for projects of all scales, from building renovations to art projects and furniture pieces.

EDUCATION:

2000 Kansas City Art Institute, Kansas City, MO: BFA in Industrial Design

Sole recipient of the 2000 Industrial Designers Society of America Honor Award from the Kansas City Art Institute

RELEVANT URBAN DESIGN/PUBLIC ART EXPERIENCE:

- Prairie Logic: Kansas City, Missouri—public art collaboration for downtown rooftop performance venue
- Pedestrian Strands (I-670 Bridges): Kansas City, Missouri—public art design and fabrication
- Landscaped Edge (Wyandotte Street Bridge): Kansas City, Missouri—public art design and fabrication
- Troost Bridge Art: Kansas City, Missouri—public art design and fabrication
- Art in the Loop: Kansas City, Missouri—public art fabrication
- Broadway Overpass: Kansas City, Missouri—bridge and pedestrian experience enhancements
- Main Street Bridge: Kansas City, Missouri—bridge and pedestrian experience enhancements



KARA SCHIPPERS

designer - el dorado inc

Kara joined el dorado after graduating from the University of Kansas in 2013. She has participated in all stages of design for a variety of large scale projects ranging from University expansions to city master planning exercises. Kara is currently engaged in the Warehouse Arts District master plan in Lawrence as well as the design of new single-family residences in East Lawrence.

EDUCATION:

2013 University of Kansas, Lawrence, KS: MArch

RELEVANT URBAN DESIGN/PUBLIC ART EXPERIENCE:

- Hardesty Renaissance Master Plan: Kansas City, Missouri—master plan of 18.5 acre former Federal Complex
- South Central Waterfront District: Austin, Texas—redevelopment master plan of 97 acres along Lady Bird Lake
- Warehouse Arts District Master Plan: Lawrence, Kansas—four block master plan for mixed-use development
- The LUX: Wichita, Kansas—mixed use commercial / residential building renovation, streetscape, tenant finish and F/F/E
- University of Arkansas Art and Design District: Fayetteville, Arkansas—adaptive reuse, expanded studios, teaching labs, shop spaces, and critique and installation spaces
- Salvation Army Renaissance Center: Omaha, Nebraska—at-risk housing, daycare center, food pantry, office space*
- Rehabilitation Center of Chicago: Chicago, Illinois—new research hospital*
- Focal Point: Chicago, Illinois—1 million SF complex with hospital, retail, education, arts, and recreation components*
- Aksarben Village Zone 6: Omaha, Nebraska—mixed use office and retail space*

*while at other firms



TRISTAN SURTEES

lead artist - Sans façon

Sans façon began as an investigation between French architect Charles Blanc and British artist Tristan Surtees, and has developed into an ongoing collaboration through an art practice. The pair undertake diverse projects, both temporary and permanent.

EDUCATION:

BA Hon's, Glasgow School of Art, Scotland

RELEVANT EXPERIENCE:

- WATERSHED+, Lead artist for Pilot Period, long term plan to place creativity at the heart of the City's watershed related projects within the City corporation, Calgary, Canada; ongoing
- Limelight: Saturday night, international installation and video work - installed in 15 cities across the world, most recently in Calgary, Canada and in Hamm, Germany; ongoing
- City Orchard, design of a Public Orchard as a shared public space, for Worcester University; under construction
- 6 Acres, design of a gathering place for a renovated housing estate in collaboration with landscape architect, London; 2014
- You are here, temporary installation for the Commonwealth Games, Glasgow; 2014
- Cacher pour mieux montrer, temporary artwork developed for Saskatoon's Public Art program, Saskatoon, Canada; 2013
- American for the Arts Public Art Network Award for 2014 Year in Review, 3 awards for the 2014 Year in Review, only multiple awards for the year
- Morecambe House, setting out the future of public art in the West end of the city, artist consultant, Lancashire; 2009



CHARLES BLANC

lead artist - Sans façon

Sans façon began as an investigation between French architect Charles Blanc and British artist Tristan Surtees, and has developed into an ongoing collaboration through an art practice. The pair undertake diverse projects, both temporary and permanent.

EDUCATION:

MArch, Advanced Architectural Design, Strathclyde University, Glasgow, Scotland; DPLG, Ecole d'Architecture de St Etienne, France

RELEVANT URBAN DESIGN/PUBLIC ART EXPERIENCE:

- WATERSHED+, Lead artist for Pilot Period, long term plan to place creativity at the heart of the City's watershed related projects within the City corporation, Calgary, Canada; ongoing
- Limelight: Saturday night, international installation and video work - installed in 15 cities across the world, most recently in Calgary, Canada and in Hamm, Germany; ongoing
- City Orchard, design of a Public Orchard as a shared public space, for Worcester University; under construction
- 6 Acres, design of a gathering place for a renovated housing estate in collaboration with landscape architect, London; 2014
- You are here, temporary installation for the Commonwealth Games, Glasgow; 2014
- Cacher pour mieux montrer, temporary artwork developed for Saskatoon's Public Art program, Saskatoon, Canada; 2013
- American for the Arts Public Art Network Award for 2014 Year in Review, 3 awards for the 2014 Year in Review, only multiple awards for the year
- Morecambe House, setting out the future of public art in the West end of the city, artist consultant, Lancashire; 2009



LUKE DUBOIS

technical artist support

Luke DuBois is a composer, artist, and performer who explores the temporal, verbal, and visual structures of cultural and personal ephemera. He holds a doctorate in music composition from Columbia University, and has lectured and taught worldwide on interactive sound and video performance. He has collaborated on interactive performance, installation, and music production work with many internationally-known artists and organizations. His work and writing has appeared in print and online in the New York Times, National Geographic, and Esquire Magazine. (lukedubois.com)

EDUCATION:

Doctor of Musical Arts, Music Composition; Columbia University, New York, NY, 2003

RELEVANT EXPERIENCE:

- R. Luke DuBois: NOW. Ringling Museum of Art. Sarasota, FL. January - May, 2014.
- The Public Private. Parsons School of Design. New York, NY. February - April, 2013.
- Hindsight Is Always 20/20. Lawrence Arts Center. Lawrence, KS. October - November, 2012.
- Presentation of Projects. Residency Unlimited. Brooklyn, NY. October, 2012.
- Hindsight Is Always 20/20. DUMBO Arts Festival. Fulton Ferry State Park, Brooklyn, NY. September - October, 2012.
- RIOT GRRRL & R. LUKE DUBOIS. International Arts & Artists' Hillyer Art Space. Washington, DC. September, 2012.
- The Marigny Parade. PROSPECT: New Orleans. New Orleans, LA. October, 2011 - January, 2012.
- Sweet Stream Loves River. DUMBO Arts Festival. Brooklyn, NY. September, 2011.
- A More Perfect Union, bitforms gallery, New York, NY. January-February, 2011.
- Billboard, Dub Shop, Kleio Projects, New York, NY. March, 2010.



DENNIS DOMER PHD

artist advisor, East Lawrence Historian

Dennis Domer spent 45 years in academia before moving on in June 2014. He held numerous teaching and administrative positions during those years, including Registrar at Baker University; Acting Dean, Associate Dean, Acting Chair of Architecture, Acting Chair of Urban Planning in the School of Architecture, Design, and Planning at the University of Kansas; and Clay Lancaster Distinguished Professor and Chair of the Historic Preservation department at the University of Kentucky. He authored dozens of scholarly articles during that period and three books, one of which was *Embattled Lawrence: Conflict and Community*. Domer spent three years studying East Lawrence after he retired in 2006 from Kentucky and will be converting a long manuscript on East Lawrence into a book called *Living in Lawrence*. Currently, he is the executive director of New Cities (www.newcities.ku.edu) and coordinator of the I-70 Corridor Aging Network (www.aging.net).

EDUCATION:

B.A. in French and German, Baker University, 1966
M.A. in Germanic Languages and Literatures, University of Kansas, 1969
M. A. in American Civilization, George Washington University, 1990
Ph.D. in Education, University of Kansas, 1980

SELECTED ARTICLES AND CHAPTERS:

- *Embattled Lawrence: Conflict and Community*. Edited by Dennis Domer and Barbara Watkins. Lawrence: The University of Kansas, Continuing Education, 2001.
- *Making Urban and Rural Landscapes on the Prairie Plains*. With Michael Swann. *Vernacular Architecture Forum*, 1996.
- *Water in Willow Springs Township*, *Kansas History*. Vol. 19, No. 1 (Spring 1996), 64-80.



DARRON AMMANN RLA, LEED AP

senior project manager - Bartlett & West

Darron's passion for landscape architectural design and land development is both innovative and visionary. He approaches a site plan development, land use master plan, trail, university, commercial or park design with an imaginative flair and an eye to detail. As a senior project manager, clients value his wide range of knowledge on all things landscape architectural related.

EDUCATION:

B.S. in Landscape Architecture, North Dakota State University, 1998

B.S. in Environmental Design, North Dakota State University, 1997

RELEVANT EXPERIENCE:

- Downtown Beautification Master Planning, Lawrence, KS
- Downtown Streetscape, Atchison, KS
- 63rd & Blue Ridge Cutoff Intersection Streetscape, Raytown, MO
- Raytown Road & Gregory Boulevard Intersection Streetscape, Raytown, MO
- College Hill Residential/Commercial Redevelopment, Topeka, KS
- Beta Theta Pi Memorial Pavilion, Lawrence, KS
Downtown Revitalization, Dexter, IA
- Greenway Corridor Study for Frog Hollow, Jefferson City, MO
- 43rd Avenue Park Master Plan, Hutchinson, KS
- Citywide Parks & Trails Master Plan, Baldwin City, KS
- Citywide Parks & Trails Master Plan, Russell, KS
- Downtown Beautification Master Planning, Lawrence, KS
- Deerfield Park Master Planning, Lawrence, KS
- PMH Forsyth Parks & Trails Master Plan, Fort Riley, KS
- Burroughs Creek Corridor Linear Park and Trail, Lawrence, KS
- Kaw River State Park Master Planning (KDWP), Topeka, KS
- Prairie Spirit Trail Phase 3 (KDWP), Welda, KS to Iola, KS



BILL NAEGER PE, LEED AP BD+C

senior project manager - Bartlett & West

Bill focuses on communication, scheduling, budget, attention to detail and quality of service to meet his clients' needs. His vast experience in mechanical, electrical and plumbing engineering make him a valuable asset to every project team. His talents have been focused on utility, telecommunications, institutional, correctional, educational, theatrical, office and multiple residence facility challenges.

EDUCATION:

B.S. in Architectural Engineering, Kansas State University, 1984

RELEVANT EXPERIENCE:

- Facility Conservation & Improvement Services, Performance Contract, Washburn University: Topeka, KS—Project Manager on project involving an energy audit of all the facilities on campus and the implementation of selected energy conservation measures.
- On-Call Mep Engineering Services, Division Of Facilities Management: Topeka, KS—Projects involved documentation of construction, evaluation of existing mechanical and electrical systems, and design of replacement systems.
- On-Call Mep Engineering Services, Kansas State University: Manhattan, KS—Project manager and lead engineer for multiple projects.
- Towers Complex Renovation, Emporia State University: Emporia, KS—Project manager and design engineer for mechanical, plumbing and electrical systems in existing university dormitory buildings.
- MEP Improvements, West Hall, Kansas State University, Manhattan, KS- Project manager for MEP improvements to 74,000 square feet, six floor dormitory.



BRIAN AUSTIN PE, PTOE

project engineer - Bartlett & West

Brian is certified as a Professional Traffic Operations Engineer and has primarily worked on municipal street projects since joining the firm. He focuses on the engineering principles that improve traffic safety, increase the operating capacity of the roadways, and reduce vehicle delay while maintaining safe and efficient access to residences and businesses. Brian's passion centers on the design of bicycle infrastructure and the benefits it can bring to communities.

EDUCATION:

M.S. in Civil Engineering, Kansas State University, 2012
Graduate Certificate in Transportation Engineering,
Kansas State University, 2012
B.S. in Civil Engineering, Kansas State University, 2002

RELEVANT EXPERIENCE:

- Topeka Bikeways Phase 1: Topeka, KS—Project Manager on design and creation of the City's Bikeways Plan which identifies both short term and ultimate design configurations of bikeways throughout the city.
- Venturepark Development: Lawrence, KS—Project Manager. Performed a Traffic Impact Study for the proposed industrial park at the former Farmland industrial site along K-10 in east Lawrence.
- US-59 (Iowa Street) Reconstruction Project: Lawrence, KS—Senior Project Engineer. Designed US-59 reconstruction project from the Irving Hill overpass to Harvard Rd.
- 17th Street & Urish Road Roundabout: Topeka, KS—Senior Project Engineer. Performed Traffic Impact Study for the 17th Street connection of Wanamaker Road to Urish Road as part of the Menard's development. Designed 17th Street connection and roundabout at the 17th & Urish intersection.
- SE 45th & Croco Road Roundabout: Shawnee County, KS—Project Engineer. Designed a single lane roundabout at 45th & Croco along with the Croco Road reconstruction from US-40 (6th St) to 45th St.



SHANE COEN FASLA

principal - Coen + Partners

Shane Coen, FASLA, is the founder of Coen + Partners, a Minneapolis-based landscape architecture studio. Over the past twenty years, Coen + Partners' work has been recognized as both progressive and timeless, receiving over thirty awards for landscape architecture, planning, and urban design. Shane's studio has been acknowledged by AIA, ASLA, and the Committee on Urban Environment as well as by the editorial staff of such influential publications as The New York Times, Metropolis, Dwell, and Architectural Record. Shane has lectured extensively, including for the Mayors' Institute on City Design and has taught at Harvard University's Graduate School of Design. Shane focuses on building collaborative relationships with influential contemporary architects, designers, and artists throughout the world.

EDUCATION:

University of Massachusetts, Amherst

RELEVANT EXPERIENCE:

- Minneapolis Central Library: Minneapolis, MN — Plaza and streetscape design, public artist collaboration, seating and lighting design
- Westminster Presbyterian: Minneapolis, MN — Courtyard, streetscape, and art wall design
- Nicollet Mall Renovation (with James Corner Field Operations): Minneapolis, MN — Urban streetscape design and activation, public engagement
- Movement on Main: Syracuse, NY — Master Plan and streetscape design, open space activation and place-making
- Pompano Beach Civic Campus: Pompano Beach, FL — Master Plan, plaza and streetscape design, open space activation
- Washington Square Park: Kansas City, MO — Master Plan, public engagement, open space activation
- Lavin Bernick Student Center: Tulane University, New Orleans, LA — Public plaza design and place-making



KELLY KINDSCHER PHD

native plant specialist

Kelly Kindscher is a Professor in the Environmental Studies Program and Senior Scientist at the Kansas Biological Survey at the University of Kansas. Dr. Kindscher is a plant community ecologist and ethnobotanist with over 25 years of experience. He has extensive fieldwork experience, led many field projects, been involved in numerous landscaping and restoration projects with native plants, and has published over 100 papers from topics ranging from plant community ecology and native prairie plants to prairie and wetland ecology and restoration. Currently he is focusing much of his attention on collecting medicinal plants and looking for natural products and anti-cancer compounds throughout the Great Plains and Southwest that help support the use of native plants for the KU Native Medicine Plant Research Program.

EDUCATION:

Ph.D. in Systematics and Ecology, University of Kansas.
Dissertation title: "Prairie Plant Guilds: An Ordination of Prairie Plant Species Based on Ecological and Morphological Traits," 1991.

M.S. in Systematics and Ecology, University of Kansas.
Thesis title: "Medicinal Prairie Plants," 1988.

B.A. in Environmental Studies with Honors and Distinction,
University of Kansas, 1979

RELEVANT EXPERIENCE:

- Pharmacy Garden at the KU School of Pharmacy.
B. Timmermann and K. Kindscher. Heartland Plant Innovations. \$20,000. August 2010—July 2013.
- Botwin Building rooftop: Kansas City, MO. Native little bluestem roof garden (with el dorado inc)
- Innovation Center for Advanced Plant Design: Plants for the Heartland, Year 1. B. Timmermann and K. Kindscher. Heartland Plant Innovations (Kansas BioScience Authority). \$828,811. July 2009—July 2010.

PROJECT APPROACH:

Our approach centers upon exploring innovative Complete Street design concepts that enhance the identity and cultural vitality of the 9th Street Corridor through East Lawrence and Lawrence's recently established Cultural District, specifically by addressing the goals of the Artplace America grant that imagines the street as a dynamic and revolving public art platform, engaging residents and visitors in a rich and meaningful social exchange. Just as important is our desire to ensure that the community stakeholders, nearby property owners, and the city are excited about this project and that an inspired, catalytic project be implemented. The scale and ambition of this project will make it one of, if not the most significant Complete Street Project and Public Art Initiative happening in the United States. That said, the success of the project hinges on an Urban Design team whose sensibilities and community engagement strategies artfully embrace the sensitivity of the local urban fabric and the rich history of the neighborhoods surrounding the project site.

Per the requests outlined in the RFQ we have organized the project in two phases. The first phase generally outlines the Design Phase, the second phase outlines the Implementation Phase.

Phase I STAKEHOLDER ENGAGEMENT, ARTIST PARTICIPATION, STREETScape DESIGN

1A> Create a Work Plan. To organize and manage the design process to maximum potential we will establish a framework and schedule for this project. In responding thoughtfully to the Approach section of your RFQ, this task has already begun. We will work closely with City staff and other Stakeholders to ensure that expectations are clearly articulated and that an effective plan to meet these expectations is established.

During this phase of work we will perform the following tasks:

- **Citizen Participation Model.** This is one of the most exciting and important parts of this project for our team. We will work closely with the City of Lawrence and the Lawrence Arts Center to determine Stakeholder Groups that the project will engage. Through our experiences working in a number of urban neighborhoods we know that each community has its own ways of communicating. Fortunately, through el dorado's collaborations with the Lawrence Arts Center, our teaching position at KU, and my own personal experience as a resident in East Lawrence, we have a strong foothold in the community dynamics surrounding the project site. We look forward to a vigorous dialogue about this critically important part of the project and some of the ideas presented in Task 1B below.
- **Artist Participation Model.** As outlined by the Artplace America grant application completed by the Lawrence Arts Center, we have assembled a team that is unmatched in public art collaborations wherein artists are situated at the forefront of urban design initiatives. We are well versed in public art administration and implementation, and during the early phases of the project plan to enlist regional and/ or local artists to join the Creative Team to help with the design and realization of the 9th Street Corridor. In collaboration with the Lawrence Arts Center and Artplace America, we will issue a Call to Artists during this phase, and ultimately integrate a diverse artist team into the design phases of the project. Anchored by our in-house art fabrication shop, and with technical assistance from nationally acclaimed mixed-media artist Luke Dubois, el dorado will provide technical leadership for artist participation, ensuring that art concepts of all mediums are seamlessly integrated into the design of the Complete Street infrastructure.
- **Data Needs.** With the help of City staff we will assemble relevant data related to critical technical components of this project. This includes but is not limited to adjacent infrastructure improvements both implemented and planned, traffic studies, planning studies, transportation plans, etc. and is expanded upon further in Task 1C below. With help of the newly appointed Director of Arts and Culture, we will also assemble all data pertaining to the Cultural District of Downtown Lawrence. Dennis Domer, our project team historian, will contribute culturally impactful historical data for consideration as well.

- **Comprehensive Overview of Planning Process.** Working with the City staff and Stakeholders we will create a written, graphically illustrated guide outlining the steps involved in this design process. Included in this guide will be a series of clearly articulated, commonly agreed upon set of goals and constraints that will guide the process.
- **Process Calendar with Milestones.** We will create a process calendar with identified milestones.

1B> Define Participation Opportunities. The creation of a citizen-based planning process is essential for this project, working in concert with leveraging the tremendous civic and corporate support shown thus far for this project. It is also essential to build upon and effectively utilize the resources available to us in the form of City Staff and existing technical and planning documents that impact the project area.

During this phase of work we will perform the following tasks:

- **Develop and engage a Citizen Steering Committee (CSC).** We will facilitate meetings and regular communication with the CSC representing the various stakeholders of the project area.
- **Develop and engage Technical Steering Committee (TSC).** We will facilitate meetings and regular communication with the TSC appointed by the City and led by the Parks and Recreation Department.
- **Design Charettes / Workshops.** We will work with both the CSC and TSC to establish a targeted design charette methodology to create an interactive design process. Three areas in particular we propose focusing on are 1) the role of public art and Creative Placemaking within the project (led by el dorado inc and Sans façon); 2) defining the meaning of a Complete Street, including a discussion of the desired degree of “completeness” and how to anticipate maintenance needs (led by el dorado inc, Coen + Partners and Bartlett & West); and 3) the cultural impact of the project site’s history within its urban context (led by el dorado inc, Sans façon, and Dennis Domer).
- **Focused Public Gatherings.** We will work with the City and Stakeholders to define the number and occurrence of public meetings. We will establish a multi-tiered approach to public meetings, including meetings devoted strictly to this project but also participation opportunities in regularly schedule meetings in each of the benefitting neighborhoods.
- **Casual Public Gatherings.** We offer el dorado inc’s fifteen year tradition of casual street parties as a potential community-specific engagement strategy. There are many established “gathering” traditions in East Lawrence and Downtown Lawrence. We see these (both Focused and Casual Public Gatherings) as opportunities to test various prototypes and concepts during the design process.
- **Website/Blog/Basecamp.** Face-to-face meetings are not for everybody. We will work with the City and Stakeholders to explore and establish online and social media communication platforms to round out our public outreach strategy. In addition to considering project-specific online media (a project website, for example) we will consider linking to known online media such as City and various community and business association websites.
- **Leverage Media Relations.** We have good working relationships with a variety of local and national media, many of which will be interested in this project and process. A project of this magnitude will garner significant media interest, locally and nationally, which can then be helpful in attracting subsequent funding. With a proven, discretionary track record regarding when to pique public interest we offer the opportunity to leverage our media relationships to further the goal of raising public awareness of and involvement in this project.
- **Non-Traditional Communication.** A wide array of non-traditional communication platforms exist – billboards, temporary installations, night projections, etc. – that might be well received along the 9th Street Corridor. While taking seriously the need for public safety and professionalism we propose exploring some of these ideas as potentially useful to the goal of creating an engaging citizen-based planning and design process.

1C> Data Collection. A tremendous amount of information relevant to this project has been assembled over the years, and our engineering consultant Bartlett & West is well versed in much of it. From planning overlays to Cultural District maps, much is already known about the physical aspects and the role the 9th Street Corridor plays as a critical street in Lawrence, Kansas. The success of any design concept, no matter how banal or innovative, depends on awareness of this information and a clear, shared understanding of what is useful. We will create a Planning Workbook that will house data collection and analysis plus work product generated during the design process.

During this phase of work we will perform the following tasks:

- **Mapping Materials.** We will need accurate data conveying topography, infrastructure, building, easements and public-rights-of-way boundaries for the project area. We will also analyze bus routes, existing bike and trail systems, established urban districts and other various urban connections related to the site. We will work with City Staff to determine what, if any, additional information needed for this project.
- **Existing Conditions Inventory.** We will create a graphic (drawing and photography) and verbal inventory of the public right of way and private property conditions (anything impacting the scope of work) along the 9th Street Corridor. We will document existing infrastructure and outline potential upgrades required to meet the goals and aspirations of the Artplace America grant application.
- **Review and Analysis of the Street Engineering Standards.** In collaboration with the City of Lawrence, we will review current engineering standards as they pertain to street and sidewalk improvements.
- **Streetscape Plan Precedents.** Depending on the results of initial meetings with City Staff and Stakeholders in defining the goals and constraints for this project, we will identify, summarize and present useful project precedents and references. To the degree applicable, we will leverage the diverse experience of our team in referencing built Complete Streets and projects in various stages of design. First hand experience is invaluable.
- **Public Right-of Way Issue Summary.** We will work with the City, public utility providers and government agencies to identify issues and design constraints related to the right-of-way.
- **Multi-modal Transportations Analysis.** We all understand and appreciate the importance of improved walkability and multi-modal movement in the current and future development of Downtown Lawrence and the East Lawrence neighborhoods. We will document the current and future transportation plans for the corridor, ensuring all multi-modal transportations goals are met through the design of the project.
- **Well-Documented Design Process.** We love to tell stories about design and the process that results in well-executed projects. We will diligently document and collect materials related to the various alternatives and ideas explored during the design process.

1D> Create a 9th Street Corridor Complete Street Plan Document. This process will result in an adoptable Complete Street document that incorporates citizen participation, key findings of the planning process, and public art integration for the 9th Street Corridor.

During this phase of work we will perform the following tasks:

- **Inventory Existing Streetscape Conditions.** See Task 1C above for more details.
- **Identify Potential Streetscape Elements and Approaches.** Streetscapes contain a wide variety of possible elements and approaches. Our team possesses a broad range of expertise to ensure we can consider the fullest extend of what is possible. For this project we feel it will be of utmost importance to explore a range of ideas that will undoubtedly focus on artistic, ecological, historic and cultural dimensions. In other words, how, through artist collaboration and stakeholder involvement, can we continue to vitalize the various neighborhood and business assets along the 9th Street Corridor.
- **Illustrate Transit Integration.** Not only will we illustrate the corridor's relationship to the Lawrence Transit System, but we will also illustrate the corridor's approach to walkability and other important multi-modal means of transportation (including but not limited to bicycles, scooters and other low impact forms of vehicular transit).

- **Provide Visual Information Illustrating Recommendations.** We will provide maps, graphs, graphics, 3D illustrations and animations to illustrate the design concepts being developed. Of particular importance will be illustrating the corridor in different conditions – during the day, at night, in different seasons, in various stages of evolution – to ensure that the full impact of decisions are understood. If necessary we can also provide material prototypes and situational installations such as custom elements, façade or other illumination strategies.
- **Provide Context Maps.** We understand that the design of the corridor needs to tie into the fabric of the distinct neighborhoods and districts benefitting from this project. Recognizing this we will provide site / context maps that illustrate the connective and possibly expansive nature of the project, especially as it relates to the Cultural District of Downtown Lawrence.
- **Recommend a Phased Implementation Plan.** As necessary we will develop a phased implementation plan for the entire corridor. This will be structured around available funding and public/private fundraising strategies.
- **Provide Cost Estimates.** We will provide cost estimates for the design and construction of the various phases of work. We will also work with City staff and the Stakeholders to establish maintenance budgets.
- **Identify Potential Funding Sources.** We will work with City staff and the Lawrence Arts Center to identify continued potential funding sources for all phases of the project. This project presents a unique public/private/ institutional partnership opportunity, one where available funds can be leveraged to secure additional potential funding from multiple sources.
- **Present Plan Document as Required.** We will present the plan at required meetings and assist City staff with presentations during the plan’s design and adoption process.

1E> Design Development Documentation. We will prepare Design Development – level Documentation for a representative block identified during the design process. These documents will describe the scope and intent of the selected streetscape concept.

During this phase of work we will perform the following tasks:

- **Thoroughly Evaluate the Physical Elements.** We will conduct a thorough and detailed evaluation and analysis of the physical elements in the selected area.
- **Prepare Design Documentation.** We will prepare site plans, plans, sections, elevations, special and typical construction details and prototypes mock-ups that refine the design concept and establish the scope, relationships, forms, size and appearance of the streetscape improvements.
- **Identification of Integrated Art Opportunities.** We will work with selected artists to integrate art concepts into the Design Development Documents of the project. Any special construction methods and/ or schedule impact required by art concepts will be identified at this time
- **Project Renderings.** We provide the City of Lawrence, the Lawrence Art Center and the Project Stakeholders 3-5 perspective renderings of the Complete Street plan, identifying multiple strategies of neighborhood outreach and civic engagement along the corridor.
- **Prepare Outline Specifications.** We will prepare an outline of technical specifications that will be required for the selected block.
- **Prepare an Itemized Estimate of Probable Cost.** We will prepare an itemized estimate of probable cost for the scope of work defined in the Design Documents and Outline Specifications.

Deliverables for tasks in Phase I include but are not limited to:

- Planning Workbook
- Existing Conditions Survey
- Articulated Project Goals
- Traffic Study
- Overall Complete Street Concept Plan with Integrated Art Strategies
- Implementation Phasing Plan
- Design Development Documentation of Approved Concept Plan
- Itemized Estimate of Probably Cost

Phase II FINAL DESIGN/ BIDDING DOCUMENTS/ CONSTRUCTION

2A> Streetscape Construction Drawings. We will prepare a final set of Construction Documents for the project including but not limited to:

- Cover sheet
- Complete Survey and Benchmarks
- Project layout and details
- Surface Drainage Design including Drainage Area Maps, pavement spread calculations, inlet and other structural design calculations, and hydraulic calculations
- Plan and profile sheets
- Driveway and intersection plans and details
- Landscaping plans and details
- Integrated artworks and details
- Lighting plans in accordance to Public Works standards
- Site furnishing plan
- Traffic Control and Phasing Plan
- Engineer's Cost Estimate

2B> Final Design Stakeholder Meeting. In collaboration with the City of Lawrence, our team will prepare for and help facilitate a meeting that brings Project Stakeholders up to speed with all aspects of the Final Design.

2C> Bidding Phase. Our team understands that the advertisement for bid for this project will be issued by the City of Lawrence, Kansas.

We will provide the following services for this phase:

- Assist City in providing responses to questions from potential bidders. Assist City in preparation of addenda. Provide any necessary documents, including clarifications to technical specifications, drawings, or details that may be needed for addenda.
- Assist City in providing responses to questions from potential bidders. Assist City in preparation of addenda. Provide any necessary documents, including clarifications to technical specifications, drawings, or details that may be needed for addenda.
- Attend pre-bid conference. Assist in preparation of pre-bid conference minutes.
- Assist City in evaluating bids received and in making a recommendation for the award of the construction contract.
- Assist City with any analyzing any specialty bids and/ or unique project delivery methods relating to public art commissions.

2D> Construction Administration and Quality Control. Our team will remain available during the Construction Phase.

Specifically, we will offer the following services:

- Attend a pre-construction conference with City representatives, the successful bidder, and utility companies.
- Attend periodic site meetings and perform site observations to review progress, quality of work, adherence to project's design intent and specifications, and generally endeavor to guard City against defective work.
- Provide written responses or clarifications (including supplementary drawings or sketches) to Requests for Interpretation issued by the City's construction contractor.
- Provide review of shop drawings, sample submittals, and mock-ups.

- Provide technical assistance for fabrication and installation, including potential in-house fabrication services, for artists commissioned to complete integrated artworks along the 9th Street Corridor
- Assist selected artists with detailed City-approved Maintenance Plans for their completed artworks
- Provide review of Applications for Payment received by Contractor.
- Review any change order requests or requests for change to contract times. Assist in evaluating any changes to contract that affect contract price.
- Attend progress meetings as required by the City's project manager.
- Conduct an inspection at Substantial Completion and prepare a Substantial Completion Punch List.
- Prepare record drawings documenting the following:
 - Change Orders
 - Design changes
 - Changes made in the field by City or as noted in Contractor's red-line drawings
 - Submit updated CAD drawings and .PDF files.
- Continued facilitated Project Stakeholder meetings throughout the construction process

2E> Quality Assurance Plan. We believe that an effective Quality Assurance (QA) Plan starts with a foundation of consistent and open communication between all parties involved. With that in mind, we are committed to using our proposed team members throughout the duration of this project. Some of our key team members are well known to both the City and potential Stakeholder Groups involved in this project. Furthermore our team has worked together on other projects and we communicate well with one another. Our Quality Assurance Plan is designed to ensure that there are systems in place throughout the duration of the project to allow for consistent review and corrective action if necessary.

Our QA Plan contains the following measures:

- **Neighborhood Sensitivity.** el dorado inc understands that the success of the project and its qualitative outcome hinges largely on a process that is inclusive to Neighborhood Stakeholder Groups. From an over-arching perspective, our team will get the project right the first time through pro-active neighborhood engagement and thorough documentation of Stakeholder feedback.
- **Consistent Consultant Team.** The team we are proposing (and would interview with if short-listed) is the same team that we would use throughout the project.
- **Ongoing In-house Document Review.** Part of our Quality Assurance Plan includes in in-house review of all documents by a designated Quality Control Manager not involved with the project on a daily basis.
- **Ongoing Meeting Documentation.** We are firm believers in the power of meeting notes. Every team meeting we have during the design process results in meeting notes that are distributed to all parties involved or posted on the project website. These are extremely helpful in reminding all what their responsibilities are, as well as being helpful in generating the next meeting agenda.
- **Develop a “Completeness” Matrix.** It is important to have a clear sense of what a “complete” street is and what level of completeness is both desired and attainable. We will leverage the experience and thought leadership of Kevin Robert Perry to develop a matrix to assist everyone's understanding.
- **Preliminary Meetings with City Councilmembers.** Working with City staff and Community stakeholders we propose identifying potential City Councilmembers to support this project early in the design process. Given the strong showing of support on all levels of City Government for this project in preliminary meetings, this should be a fairly straightforward task.
- **Cost Estimates.** The final conceptual design package of drawings and specifications will undergo a thorough review by and el dorado inc Quality Control Manager for consistency and clarity. We will establish a comprehensive cost/benefit analysis to ensure that the financial, aesthetic and environmental impact is well understood.

9TH STREET CORRIDOR: MAP OF EXISTING CONDITIONS

home (now destroyed) of Mary and James Reed, where Langston and his grandmother were sometimes lodgers

1892 William Crowdy Black Israelite open air preaching

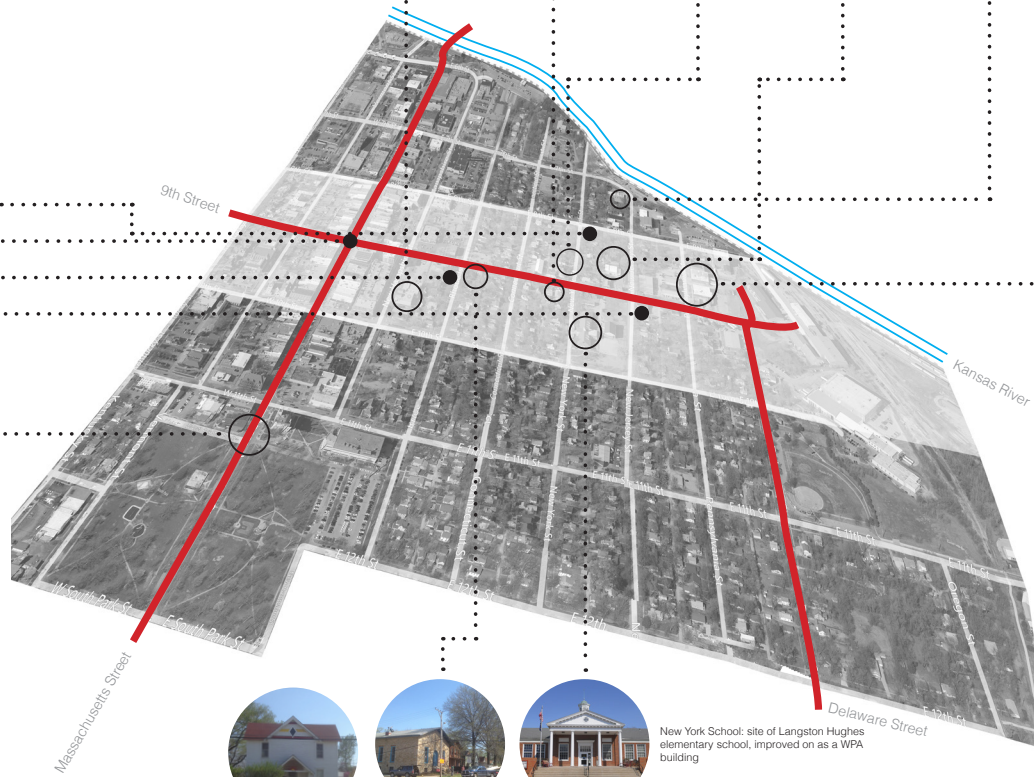
Social Service League

Kansas Key Press: printer of 1960s and 1970s social protest materials



Massachusetts Street -
Downtown Lawrence

DOWNTOWN LAWRENCE NEIGHBORHOOD



Lawrence
Arts Center



St. Luke's African Methodist Episcopal
Church: attended by Langston Hughes



current Lawrence Arts Center Artist in
Residence housing



Lawrence Creates Makerspace
Center for Innovation



Van Go, Inc. - an arts-based social service
agency that provides job-training programs
to high-needs and under-served youth



New York School: site of Langston Hughes
elementary school, improved on as a WPA
building



Turntable: 19th-century
German immigrant beer hall
and gymnasium



New York School's open lot



WAREHOUSE ARTS DISTRICT

EAST LAWRENCE NEIGHBORHOOD

RELEVANT PROJECT CATEGORIES

Our team has organized our past experience by categorizing each project into one main category listed in the RFQ and additional sub-categories where applicable. The categories are denoted by the icons below.

URBAN DESIGN AND STREETSCLAPING

Our team has a deep experience in urban design, urban landscaping, Complete Street design and innovative trail system design. We believe that our streets becomes complete when they reflect our shared cultural values and environmental responsibilities.



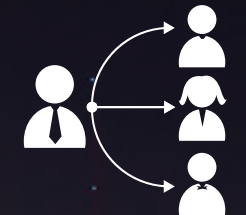
PUBLIC ART & CIVIC INFRASTRUCTURE

Our team has unmatched experience in public art that is fully integrated into the urban infrastructure that surrounds us. Ranging from performative installations to artful hardscape, our public art and civic infrastructure installations ask the public to engage the city in new ways



PUBLIC ART ADMINISTRATION

Because we work as artists in the public realm, our team intimately understands public art administration, often from the perspective of the artist. Ranging from public art master plans to selection processes and artist residencies, el dorado and Sans façon offer comprehensive public art administration services.



IN-HOUSE ART FABRICATIONS

As urban design lead, el dorado has the unique qualification of in-house art fabrication. Whether working as public artist or collaborating with other artists and stakeholder groups, our shop has contributed to dozens of urban scale public art projects throughout the region. Our shop has positioned el dorado to mentor some of the top emerging artists in Lawrence and Kansas City.



WORKING WITH NON-PROFIT & ARTS CULTURE ORGANIZATIONS

Since its conception, el dorado has provided architectural services for a wide variety of nonprofit organizations. Over the years we have developed a special knack for meeting the needs of arts-related nonprofits and community building nonprofits.



URBAN DESIGN AND STREETSCAPING

Our team has a deep experience in urban design, urban landscaping, complete street design and innovative trail system design. We believe that our streets becomes complete when they reflect our shared cultural values and environmental responsibilities.

GREATER DOWNTOWN AREA PLAN

20TH STREETSCAPE

DOWNTOWN LAWRENCE BEAUTIFICATION

NICOLLET MALL

WEST PENNWAY STREETSCAPE

LINEAR PARK AND TRAIL

MINNEAPOLIS CENTRAL LIBRARY

BALTIMORE WYANDOTTE STREETSCAPE

MOVEMENT ON MAIN

BOWMONT PARK

8TH AND PENNSYLVANIA

WESTMINSTER PRESBYTERIAN



Southwest Blvd
7th Street



GREATER DOWNTOWN AREA PLAN

Kansas City, MO

el dorado INC

CLIENT: City of Kansas City, Missouri

COMPLETION: 2009

el dorado collaborated on a multi-disciplinary team of engineers, planners and designers to help shape the planning and development policy of Downtown. The Greater Downtown Area Plan included coordination of the Kansas City Missouri Planning Department along with public input. The vicinity focused on encompassed eleven separate neighborhoods and special efforts were made to take neighborhood identity into consideration. This plan considered the recommendations of past city plans (FOCUS, Sasaki and others) and updated them in response to changes that have occurred in the urban landscape since their adoption. The plan explored numerous sustainability concepts, including improved storm water management and multi-modal transportation recommendations.

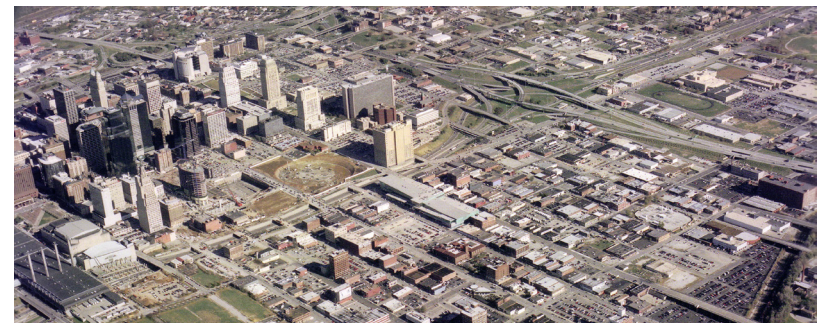
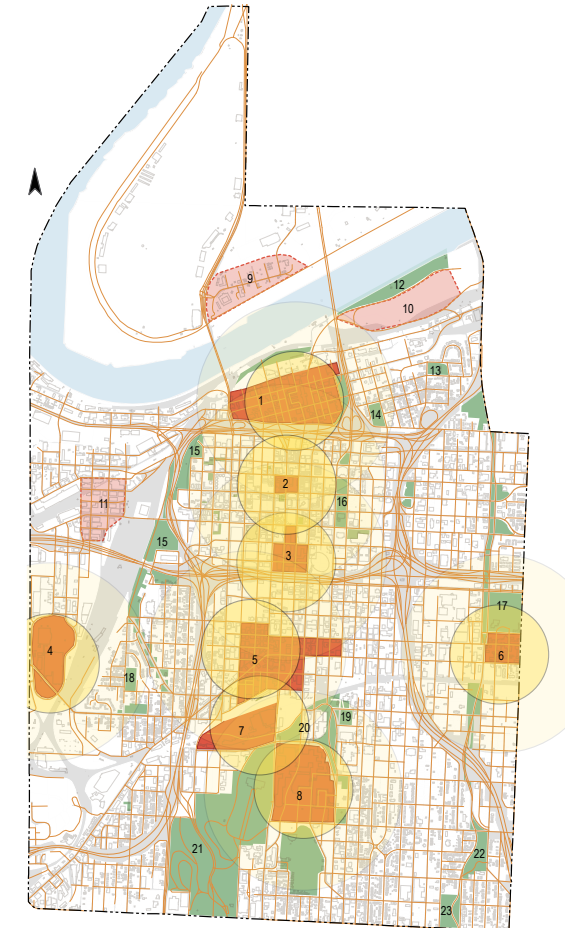
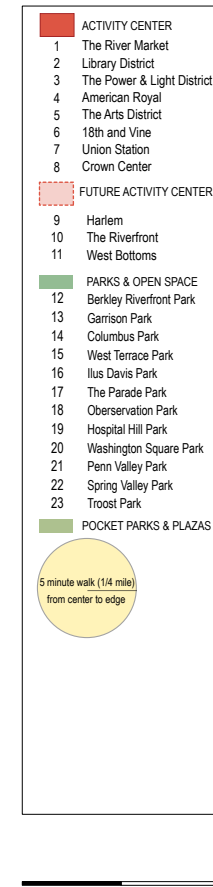
STAKEHOLDER ENGAGEMENT:

Crossroads Community Association; Westside Neighborhood Association; Downtown Neighborhood Association; Historic Northeast Neighborhood Associations; Ivanhoe Neighborhood Association; Downtown Council of Kansas City; Crown Center; Childrens Mercy Hospital; UMKC; KC ATA;

SCHEDULE/BUDGET:

The master plan was completed on time and within the proposed fee budget.

Activity Centers & Parks





20TH STREETSCAPE

Kansas City, MO

CLIENT: City of Kansas City, Missouri

SIZE: 6 blocks x 100' ROW

el dorado INC

COMPLETION: 2015

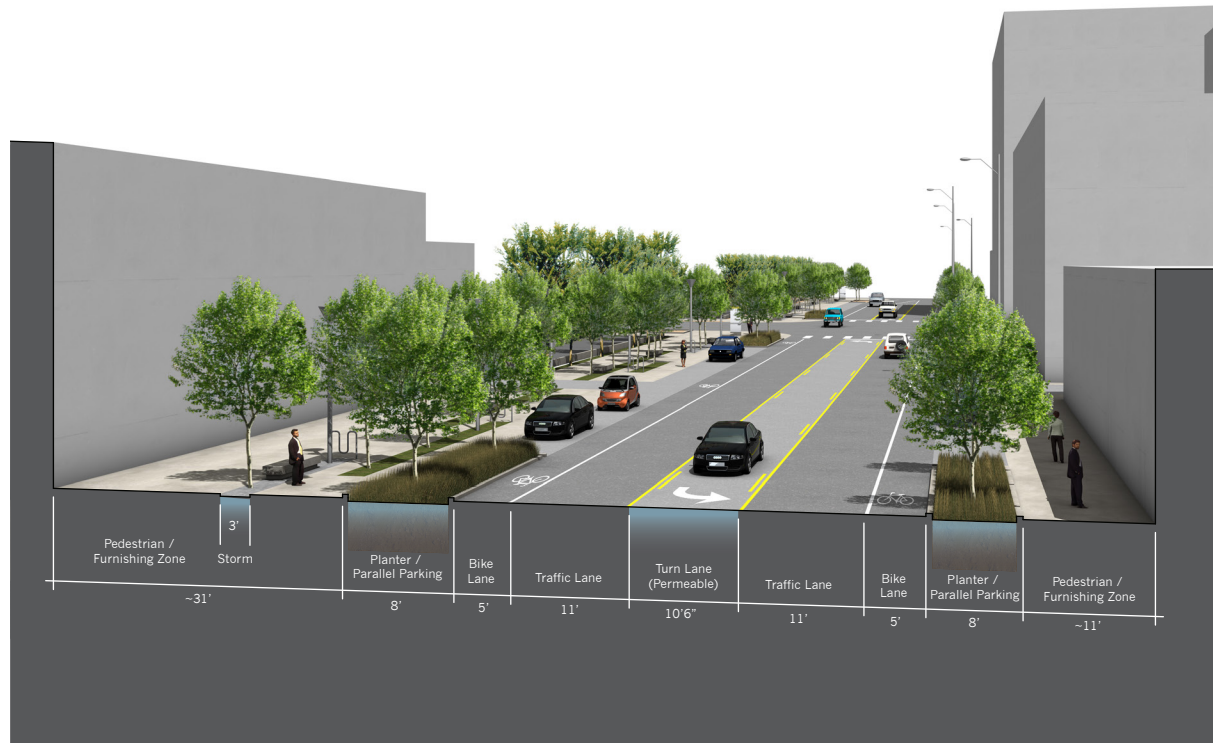
el dorado was selected by the City of Kansas City, Missouri to lead a design team responsible for planning six blocks of 20th Street, an important residential, commercial, and artistic corridor in the Crossroads Neighborhood. The design addresses multiple modes of transportation in the hopes of creating a street that is equally accessible to pedestrians, cars, cyclists, and buses. Public green space, street trees and plantings, and safe and efficient parking improve the street for residents, visitors, and businesses in the neighborhood. The streetscape design focuses on the five primary goals of the Greater Downtown Area Plan: Create a walkable downtown, double the population downtown, increase employment downtown, retain and promote safe, authentic neighborhoods, and promote sustainability.

STAKEHOLDER ENGAGEMENT:

Crossroads Community Association; Westside Neighborhood Association; Adjacent Property Owners; KCPL; KC Streetcar Authority; Crown Center; The City of Kansas City, Missouri

SCHEDULE/BUDGET:

The design phases have been completed on time and within the proposed fee budget.



Pedestrian / Furnishing Zone	Storm	Planter / Parallel Parking	Bike Lane	Traffic Lane	Turn Lane (Permeable)	Traffic Lane	Bike Lane	Planter / Parallel Parking	Pedestrian / Furnishing Zone
~31'	3'	8'	5'	11'	10'6"	11'	5'	8'	~11'



dining

Seventh St



DOWNTOWN LAWRENCE BEAUTIFICATION

Lawrence, KS

BARTLETT & WEST

CLIENT: City of Lawrence

SIZE: 6 blocks

COMPLETION: ongoing

Bartlett & West provided framework and guidance for current and future development and beautification enhancements in the Downtown Lawrence area. The main goals were directed toward increased landscaping, amenities and overall ideas for aesthetics and beautification, but also investigated other big picture ideas for consideration. Bartlett & West worked directly with city management staff, the Lawrence Parks and Recreation Department and downtown business owners to complete an overall study. The final product included recommendations for increased landscaping and maintenance as well as addressing specific city budget concerns and planning for the future.

STAKEHOLDER ENGAGEMENT:

East Lawrence Neighborhood Association, open community meetings, Downtown Lawrence Inc.

SCHEDULE/BUDGET:

All phases have been completed on time and on budget.





NICOLLET MALL

Minneapolis, MN

CLIENT: City of Minneapolis

SIZE: 485,000 sf

COST: \$45,000,000

COEN+PARTNERS

(with James Corner Field Operations)

COMPLETION: 2016

In turning Nicollet into a “Mall” in the 1960’s, the emphasis shifted to a pedestrian and bus oriented corridor. Today, it is in need of a physical retrofit as part of a larger vision ensure the growing vitality of downtown Minneapolis as a place that attracts investment and also where people want to live, work and play. The new vision for the street prioritizes the space for pedestrians while focusing activity in key areas including the ‘Woods’ to the north and South, and the ‘Island’ in the center at 7th and Nicollet. This design responds to both underground and above ground conditions and is crafted to allow for flexibility and adaptability from block to block based on light quality, utility locations, and varying building frontage conditions. At the same time, the design will maintain a bold visual identity of native planting and cohesive paving, furnishings, and lighting, setting the stage for activation and public art engagement.

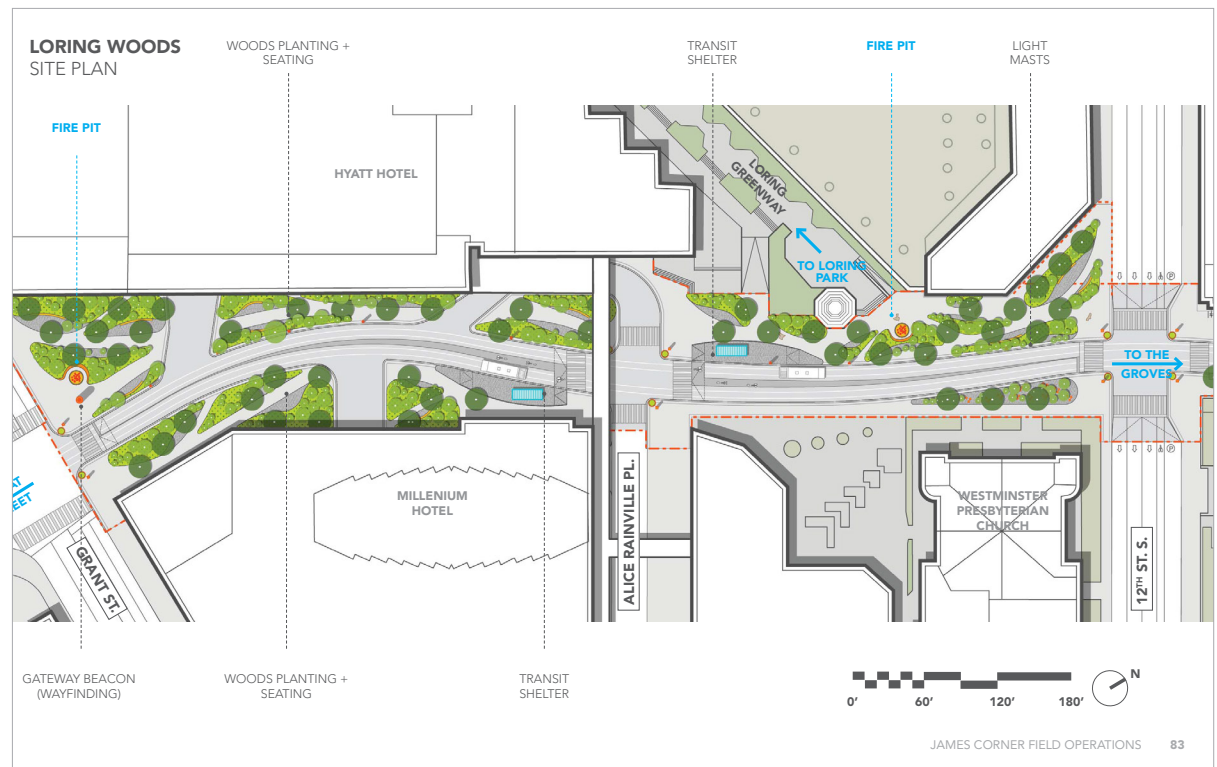
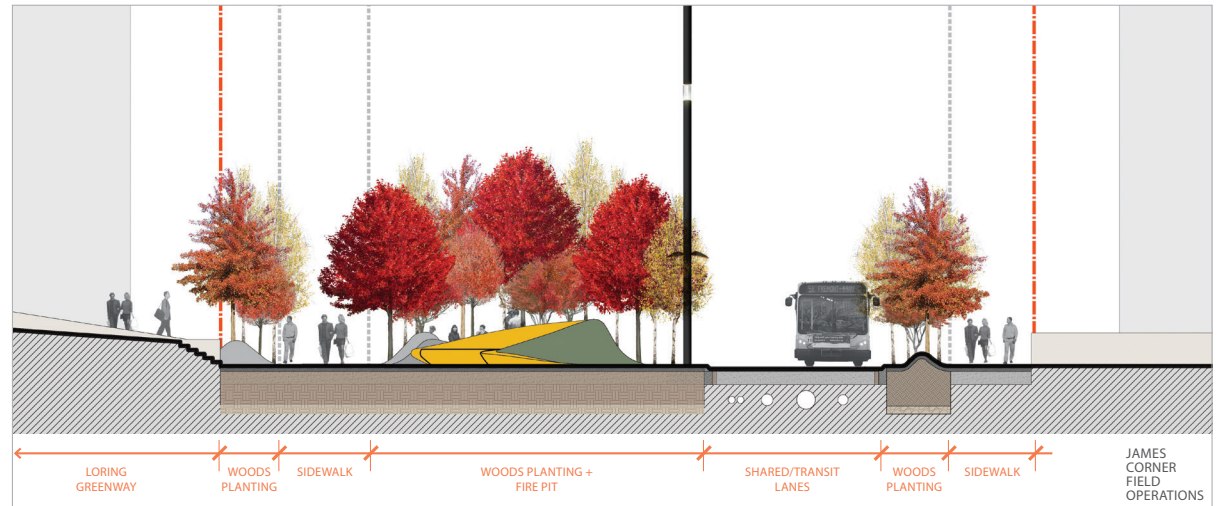
Coen+Partners is leading the technical exploration of planting and hardscape strategies, soil conditions and constructibility. In collaboration with James Corner Field Operations, Coen+Partners has been involved in extensive public outreach, management of multiple complex stakeholders, and will administer construction throughout the project.

STAKEHOLDER ENGAGEMENT:

*public presentations and programming workshops;
online surveys; block-by-block meetings with
landowners and tenants/users*

SCHEDULE/BUDGET:

*Through Schematic Design: On schedule and 5% under
budget.*





WEST PENNWAY STREETScape

Kansas City, MO

el dorado INC

CLIENT: City of Kansas City, Missouri

SIZE: 3 blocks x 50' - 75' ROW

COMPLETION: 2016

A multi-disciplinary design team, led by el dorado inc, was commissioned by KCMO's Parks and Recreation Department to re-design a three block segment of an original Kessler designed Parkway. Of special importance was the design of the intersections at 17th and 21st Streets, improved park and trail connections, better utilization of adjacent park property and the addition of stormwater BMP's along the West Pennway corridor.

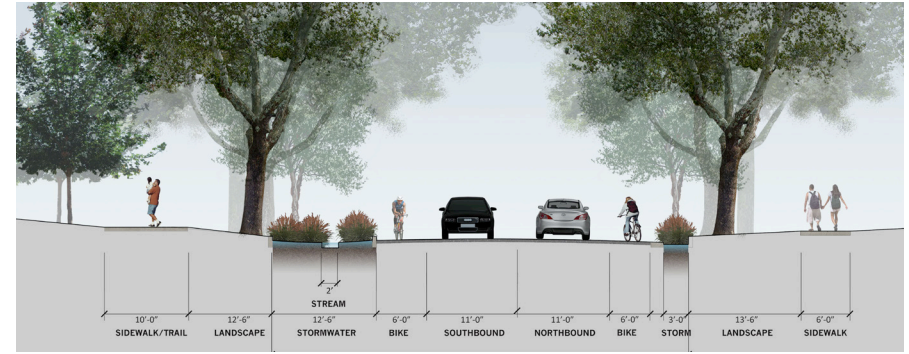
The project involved extensive, innovative public outreach techniques including walkabouts, formal and informal public meetings, door-to-door visits, a dedicated project blog and cooperative web-based information and schedule sharing through stakeholder institutions.

STAKEHOLDER ENGAGEMENT:

Westside Neighborhood Association; Westside Housing Organization, Westside Community Action Network, The City of Kansas City, Missouri

SCHEDULE/BUDGET:

The design phases have been completed on time and within the proposed fee budget.





NO MOTOR VEHICLES



BURROUGHS CREEK TRAIL

Lawrence, KS



CLIENT: City of Lawrence

SIZE: 12 blocks

COMPLETION: 2007- ongoing

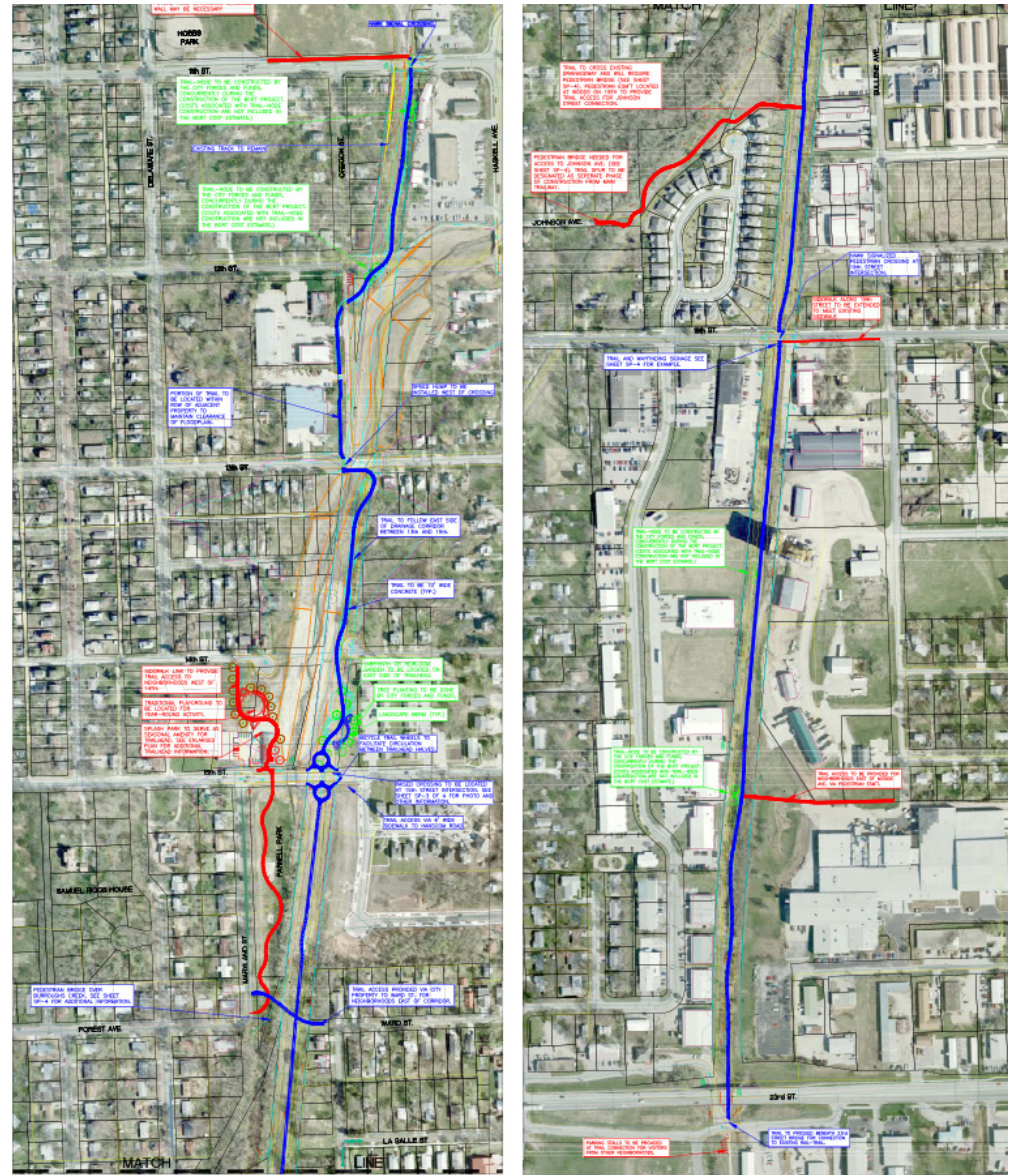
Bartlett & West provided professional services for the Lawrence Parks & Recreation Department to complete surveying, planning, and design services for a linear park and trail in Lawrence, Kansas. The project included the preparation of master plan documents for a bike and pedestrian trail with linear park elements located in East Lawrence between 11th Street and 23rd Street. As part of the project, Bartlett & West conducted two public meetings with stakeholders and community members interested in the successful completion of the project and provided a briefing of the completed design to the Lawrence City Commission at a designated meeting. The design provides linear park and trail linkage as one piece of an overall river-to-river master plan trail concept for the City of Lawrence.

STAKEHOLDER ENGAGEMENT:

East Lawrence Neighborhood Association, open community meetings

SCHEDULE/BUDGET:

All design and construction phases have been completed on time and on budget.



Burroughs Creek Rail Trail

LEGEND

- PROPOSED 2009 BCRTP PROJECT
- FUTURE TRAIL CONNECTIONS
- FUTURE LANDSCAPING AND TRAIL NODES





MINNEAPOLIS CENTRAL LIBRARY

Minneapolis, MN

COEN+PARTNERS

CLIENT: Hennepin County and City of Minneapolis

SIZE: 1 city block

COST: \$1,500,000

COMPLETION: 2006

Coen + Partners design strategy for the Minneapolis Central Library is to claim a zone around the building that connects and attracts people to the function of the place while celebrating the role of the Library within the downtown heart of Minneapolis. The site solution responds to the scale, geometry and action of the architecture by use of uncomplicated materials in inventive arrangements.

Coen + Partners extended the internal column grid of the structure into the landscape by means of a forest-like grid of custom light columns. The lighting scheme expands the luminous character of building into landscape and provides a consistent wash of light at both overhead and pedestrian scales. Additionally, a layered stone garden wraps the building to the north, mitigating the varied elevation change between the finish floor elevation and the surrounding site. Birch trees are planted only several feet apart, mimicking the natural position of the tree in a thicket or forest in rural Minnesota. The close arrangement of the trees forces a vertical growth habit, providing dapple screening for the interior reading rooms. The garden is periodically edged with wide concrete benches for quiet reading outdoors, adjacent to the interior reading rooms.

STAKEHOLDER ENGAGEMENT:

public programming workshops; public opinion polls and presentations

SCHEDULE/BUDGET:

The project was completed on time and on budget.





since the beginning
LEEDY-VOULKOS Art Center

LEEDY-VOULKOS
ART CENTER

OPIE
BRUSH
CO



BALTIMORE / WYANDOTTE STREETSCAPE

Kansas City, MO

el dorado
INC

CLIENT: City of Kansas City, Missouri **SIZE:** 3 blocks x 50' ROW

COMPLETION: 2016

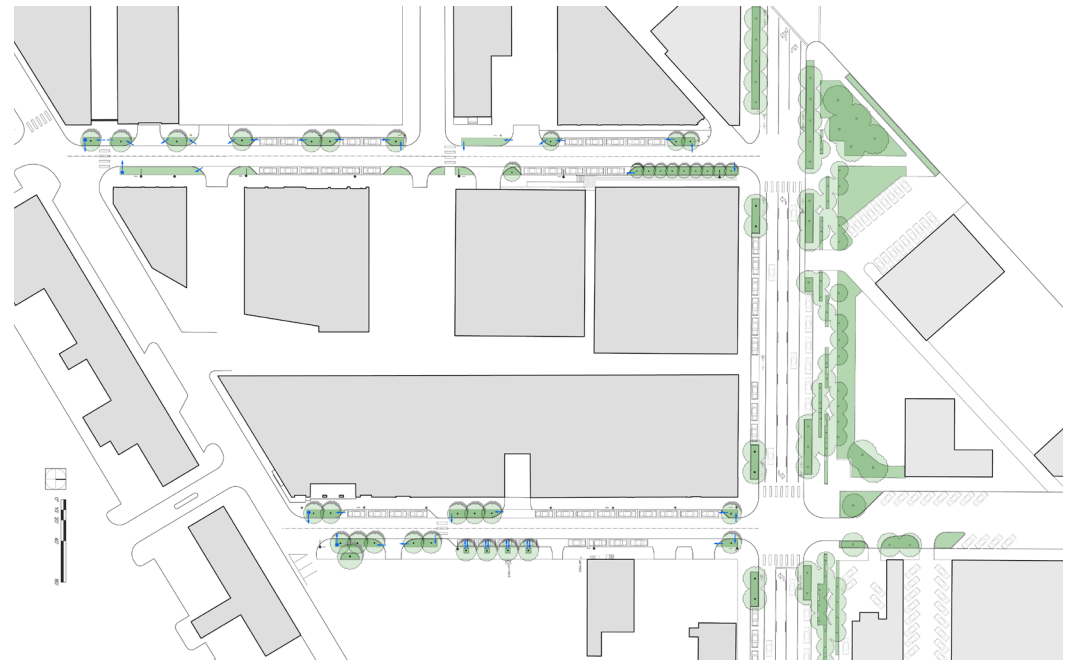
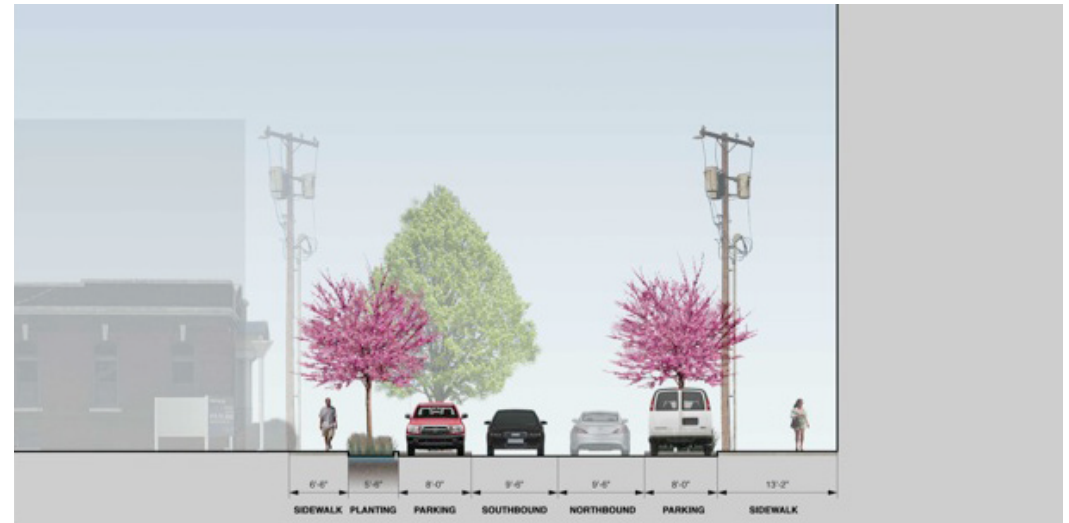
El dorado inc was hired as project-lead by KCMO Public Works to design a three block, EPA-funded pilot project featuring a range of innovative on site stormwater management designs. Elements include a variety of site specific curb extension, rain gardens, pervious paving, public art and a novel grated park lane system, coined a Grated Green Gutter. An intensely collaborative design process with City staff and adjacent property owners resulted in a streetscape project tailored to the specific physical and usage context of both streets.

STAKEHOLDER ENGAGEMENT:

Crossroads Community; Adjacent Property Owners; Environmental Protection Agency; The City of Kansas City, Missouri

SCHEDULE/BUDGET:

The design phases have been completed on time and within the proposed fee budget.





MOVEMENT ON MAIN

Syracuse, NY

COEN+PARTNERS

CLIENT: Community Organization

SIZE: 2,250 ft streetscape

COST: \$3,500,000

COMPLETION: ongoing

Coen + Partners' concept for the Movement on Main competition is organized by three guiding, interrelated objectives that promote healthy living for all who live and work within the neighborhood. The three objectives – 'Meditate', 'Move', and 'Collaborate' – define the design program and physically organize the site in a linear method, from east to west.

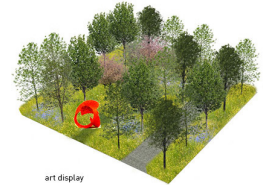
Establishing a significant green space, Wyoming Street benefits not only residents of the neighborhood, but the entire city. This bold gesture, combined with site-wide ecological interventions, inspires the kind of stewardship that is necessary to transform an intervention into a movement – an ecovillage that radiates community pride and is a model for similar neighborhoods throughout the city and region. The vision encourages year-round passive and active gatherings of four to four-hundred within a flexible framework to be populated by diverse programs and events. The plan centers on sustaining and improving the neighborhood iconography and built fabric; highlighting artistic gestures that come from the community and providing the infrastructure needed to establish timeless, functional, and democratic civic space. These new spaces -- the Green Arena, the Co-op, the Art Lab, and the Exchange -- are designed to be built cost-efficiently and maintained in perpetuity without becoming a burden to future generations.

STAKEHOLDER ENGAGEMENT:

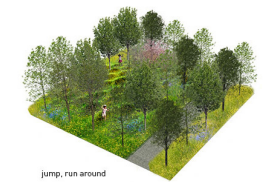
kick-off workshop on-site with key stakeholders and community leaders

SCHEDULE/BUDGET:

Through Schematic Design: On schedule and on budget.



art display



jump, run around



fall leaf collecting



winter sliding



BOWMONT PARK

Calgary, Alberta

Sans façon

CLIENT: City of Calgary

COMPLETION: ongoing

COST: \$18,500,000

Bowmont East Gate Park is a public park designed on a formal gravel pit on the edge of the Calgary city centre, incorporating a new stormwater treatment as a driving element for the landscape. Currently a major stormwater trunk pipe goes through the site, carrying one tenth of the city's untreated stormwater directly to the river. The opportunity for this project was to expand the possibilities of the connection and understanding of the stormwater treatment system as part of the park design. Often these 2 elements are considered separately, designing a functioning treatment system, and camouflaging (integrating it) as a natural pond within the surrounding park. Through this project Sans façon set about initiating a new design process for City projects, bringing together design consultants to work together from the outset. Sans façon facilitated a multidisciplinary team from the beginning to truly make the most of each participant's expertise. The project was designed in collaboration with O2 Planning+Design.



**Mayor's Urban Design Award 2013, Conceptual/Theoretical Urban Design Projects Honorable mention*

STAKEHOLDER ENGAGEMENT:

citizens of West Calgary, significant consultation and stakeholder collaboration throughout

SCHEDULE/BUDGET:

The project is under construction and on schedule.



8TH AND PENNSYLVANIA

Lawrence, KS

CLIENT: City of Lawrence

SIZE: 1 block

BARTLETT & WEST

COMPLETION: 2013

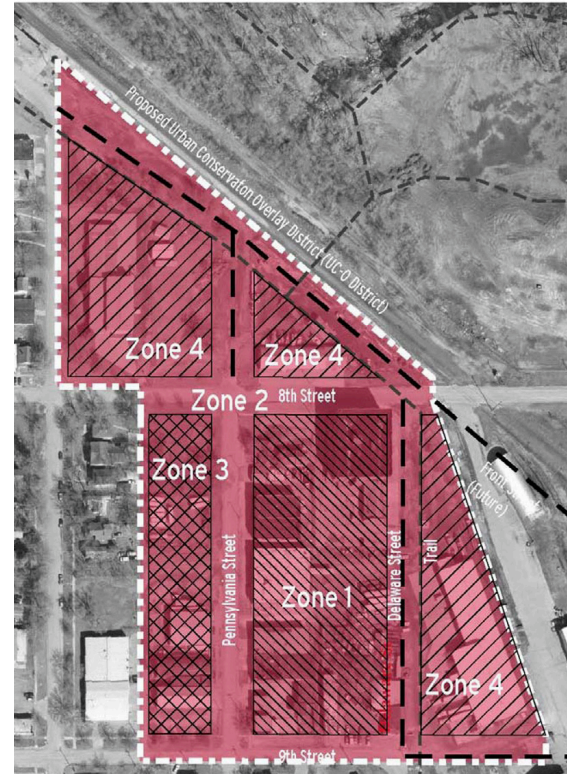
The 8th and Penn Neighborhood Redevelopment District is located in the historic East Lawrence manufacturing and railroad freight area. Bartlett & West worked with members of the design team to create a unique mixed-use neighborhood focused on preserving vital historic elements within the City of Lawrence, Kansas. The project is comprised of various infrastructure improvements, porous paving in some parking lots, existing brick buildings, and new multi-story residential buildings to provide a live, work, and play environment. Historic resources located in the 8th & Penn Neighborhood Redevelopment District are eligible for listing in the National Register of Historic Places as well as the Register of Historic Kansas Places. As a unique part of this project, specific design guidelines were created and incorporated into an Urban Conservation Overlay District to ensure compliance with all local, state, and federal preservation laws. To keep the public informed about what was going on in their neighborhood, various public meetings were held in the area to keep the local community involved throughout the design process. The residents of East Lawrence will have an additional destination point of choice within the community once completed.

STAKEHOLDER ENGAGEMENT:

East Lawrence Neighborhood Association, open community meetings

SCHEDULE/BUDGET:

All design and construction phases have been completed on time and on budget.





WESTMINSTER PRESBYTERIAN

Minneapolis, MN

CLIENT: Westminster Presbyterian Church

SIZE: 25,000 sf

COST: \$2,500,000

COMPLETION: 2008

COEN+PARTNERS

Westminster Presbyterian Church is a prominent institution in downtown Minneapolis with far-reaching community service and social justice programs. The Church enlisted Coen + Partners to complete a new design for the landscape surrounding the 110-year-old building; the firm was challenged to create a new presence for Westminster along both 12th Street and Nicollet Mall, a meaningful courtyard for receptions and ceremonies, and a new memorial columbarium containing nearly 2,000 companion niches. Views of the reception and columbarium spaces are obscured from the street by a patinaed metal screen, custom-designed with patterns abstracted from those in Westminster's original stained glass windows. A stone wall along 12th Street contrasts and complements the materiality of the church itself, while groundcover gardens are interspersed throughout the landscape spaces, providing color and texture. The columbarium is accessed by a subtly sloping procession from the street level. The reception and ceremony area consists of stone paving, a birch garden, and a series of vine-covered screens. A narrow water rill parallels 12th Street, reflecting the linear form of the columbarium wall in the adjacent space.

STAKEHOLDER ENGAGEMENT:

Westminster Presbyterian churchgoers

SCHEDULE/BUDGET:

The project was completed on time and within the proposed fee budget.



PUBLIC ART & CIVIC INFRASTRUCTURE

Our team has unmatched experience in public art that is fully integrated into the urban infrastructure that surrounds us. Ranging from performative installations to artful hardscape, our public art and civic infrastructure installations ask the public to engage the city in new ways

WATERSHED+

FIRE HYDRANT DRINKING FOUNTAINS

TROOST BRIDGE ART

PRAIRIE LOGIC

LIMELIGHT

TRANSIT OASIS

PUBLIC ORCHARD

PROMENADE

PEDESTRIAN STRANDS

LANDSCAPED EDGE

LIFT STATION

CULTIVATED WILDERNESS

FRONT STREET MARKERS



STATION 4

STATION 5



WATERSHED+

Calgary, Alberta

CLIENT: City of Calgary

COMPLETION: 2008-ongoing

Sans façon

COST: \$5,000,000

WATERSHED+ is a unique international art program hosted by City of Calgary's department of Utilities and Environment Protection which creatively renews the relationship between Calgarians and their watershed. Working in discussion and collaboration with engineers and the other practices within UEP, WATERSHED+ presents an innovative approach to public art and a distinct way of working within City departments, the public, and other stakeholders. Artists and artistic practices are embedded within UEP core activities, participating as members on infrastructure design teams, contributing to project design, development of events, community education and communication to generate an emotional connection between Calgarians and their watershed.

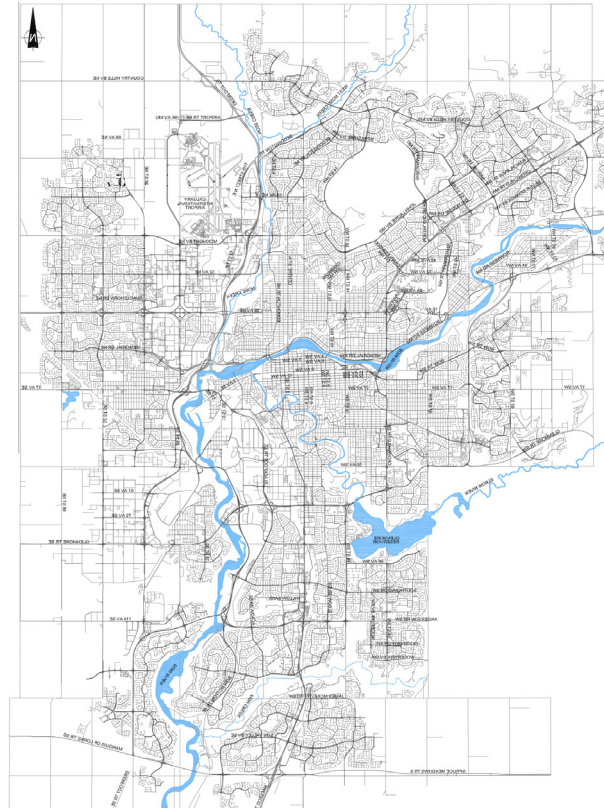
This program was devised by Sans façon leading a multi-disciplinary team composed of an artist, a graphic designer, an architect, a human geographer, and a water engineer. Sans façon are the first Lead artists (2011 - 2015) for Watershed+.

STAKEHOLDER ENGAGEMENT:

City of Calgary staff across five units, individual, project-specific community engagement with each initiative

SCHEDULE/BUDGET:

under construction - on schedule and budget





FIRE HYDRANT DRINKING FOUNTAINS

Calgary, Alberta

Sans façon

CLIENT: City of Calgary

COMPLETION: 2012-ongoing

COST: \$60,000

The Fire Hydrant Drinking Fountains are an alternative design to provide drinking water for festivals and temporary events in Calgary. They are an exploration of the social role of public fountains as gathering spaces and their connection to the invisible systems underground. The three designs - "Strangers", "Family" and "Group" - invite different formations of gathering playfully around water. Often limited to a functional set up and/or as a billboard for messaging, these unique hydrant fountains with their workings visible make the direct connection to the city water system understandable, creating intrigue and questioning for the users and inviting us to enjoy the quality of Calgary tap water. These fountains are one of the initiatives being realized by Sans façon through Watershed+.

STAKEHOLDER ENGAGEMENT:

City of Calgary fleet services fabrication team and education resources. The fire hydrant fountains are themselves the point of discourse and engagement around water for the citizens of Calgary - in place around the city over the last three years, they continue to provide a function and participation.

SCHEDULE/BUDGET:

All design and fabrication phases have been completed on time and on budget.





TROOST BRIDGE ART

Kansas City, MO

CLIENT: City of Kansas City, Missouri

COMPLETION: 2012

SIZE: 90' x 20' x 6'

COST: \$710,000



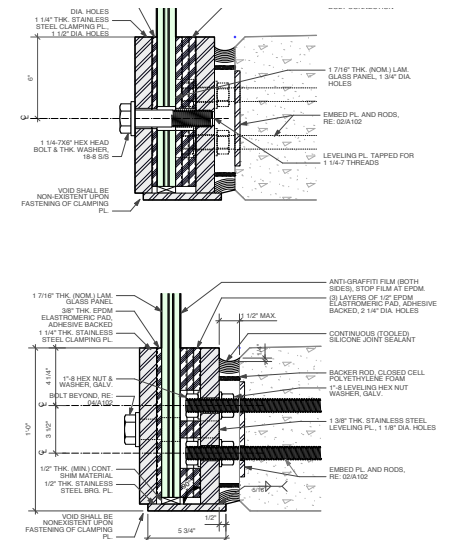
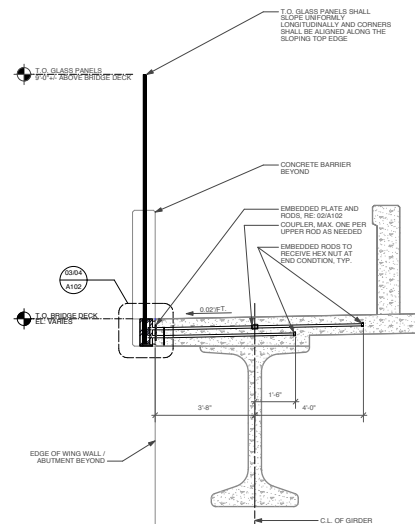
Troost Bridge is located at 48th Street, the point where Troost Avenue crosses over Brush Creek. el dorado was hired to develop a unique pedestrian experience for the new bridge—one embedded in the bridge construction itself. 10' tall glass panels run the length of the bridge, serving as the guardrail system. By night the panels are illuminated by LED lighting concealed in the concrete barrier. The barrier separates pedestrians from vehicular traffic and also holds a series of stainless steel panels that fold and billow, catching and reflecting both artificial and natural light.

STAKEHOLDER ENGAGEMENT:

Brush Creek Community Partners; 49/63 Neighborhood Association; UMKC; Stowers Institute; KC ATA; The City of Kansas City, Missouri

SCHEDULE/BUDGET:

The project was completed on time and on within the allocated budget.





LOCAL
EXPRESS

PA. B. KEELY
OHIO A. WOODARD
ILLINOIS M. HENSON
MICHIGAN J. ARBELL
MINN. C. BRESER
CALIF. L. CORDES
BRIG. MAJOR D. WEN

IOWA L. ANDERSON
S. DAKOTA P. H. LILLY
WISCONSIN M. JOHNSON
TEXAS J. PRESS
ARIZONA T. H. TAYLOR
MISSOURI W. MOORE
ILL. B. LESTER
VERMONT



PRAIRIE LOGIC

Kansas City, MO

CLIENT: City of Kansas City, Missouri

COMPLETION: 2012

COST: \$350,000

GENERAL CONTRACTOR: el dorado inc

el dorado
INC

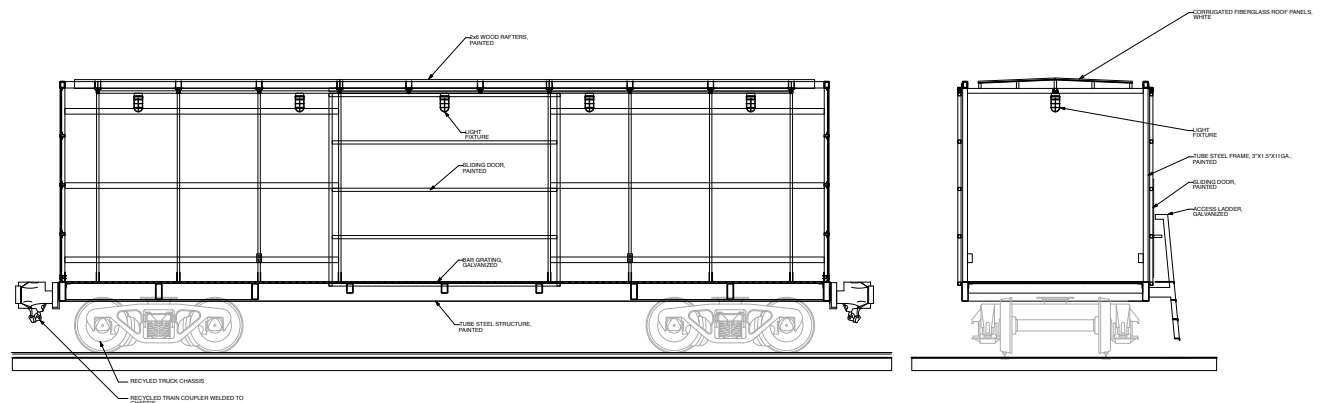
Prairie Logic is a collaboration between Brooklyn-based artist Janet Zweig and el dorado. Comprised of a full scale perforated aluminum boxcar in a 25,000 square foot sea of native prairie grass, it was commissioned by the City of Kansas City, Missouri as part of their 1% for Art program. The work is situated on a half-acre planted roof 4 stories above Main Street in Downtown Kansas City. It is meant to be experienced at three different scales: viewed from the neighboring skyscrapers looking down; viewed in the distance from the green roof; and experienced close up as both a place of solitary contemplation and as a programmed community performance space.

STAKEHOLDER ENGAGEMENT:

*Downtown Neighborhood Association,
KCMO 1% for the Arts Program, Adjacent
Property Owners*

SCHEDULE/BUDGET:

*The project was completed on time and on
within the allocated budget.*





LIMELIGHT

Touring, temporary installation

CLIENT: variable

COMPLETION: ongoing

COST: \$150,000 (15 cities-including Kansas City, MO and Lawrence, KS)

Sans façon

As part of Radiance, Glasgow first festival of light, Sans façon proposed another approach to the city's street lighting. Sans façon switched off the street lights on one street and replaced two of the lights with theatre follow spots, letting passers-by transform the street into a stage. A simple intervention creates a witty, inter-active moment, somewhere between spectacle and surveillance.

Limelight is now touring internationally since 2010. To date it has been installed in 13 cities (Glasgow, Newcastle, Inverness, London, Arlington Virginia, Kansas City Missouri, Frankfurt, Gaborone, Miami, Toronto, Manchester, Calgary, Vancouver) with 2 more venues this year. Footage of previous cities can be seen at www.limelightontour.blogspot.com. Limelight on tour was commissioned for the first 10 cities by Artisphere, the new cultural centre in Arlington, Virginia.

"Like a scene from a David Lynch film, as you stood in the circle of light you were instantly transformed into performer and participant. Such a simple gesture seems almost furtive in its ability to resist yet contain spectacle. This subtle yet dramatic intervention was one of the highlights of Radiance." Kathy Battista, in her review of Radiance for Art and Architecture Journal, number 65.

**Limelight Kansas City and was facilitated by el dorado inc.*

STAKEHOLDER ENGAGEMENT:

Crossroads Community Association; Adjacent Property Owners; City of Kansas City, Missouri

SCHEDULE/BUDGET:

The project was completed on time and on within the allocated budget.





TRANSIT OASIS

Kansas City, MO

el dorado
INC

CLIENT: Kansas City River Trails, Inc.

COMPLETION: 2004

COST: \$40,000

GENERAL CONTRACTOR: el dorado inc and Sarai Construction

In 2003, el dorado was commissioned by the Kansas City River Trails Inc. to create a “Transit Oasis” for transit riders, bicyclists, pedestrians and the residents of Kansas City’s Westside neighborhood. The project includes a custom transit shelter; a shaded, circular seating area; benches; bike racks and a community information board, all housed in a landscaped pocket park. The transit shelter, a distinctive galvanized steel structure, serves as an outdoor gallery for a permanent mural that forms its three sides. The children at a local community center created the drawings that were incorporated into the design of the shelter’s glass panels.



STAKEHOLDER ENGAGEMENT:

*Westside Neighborhood Association;
Mattie Rhodes Foundation; KC ATA; City
of Kansas City, Missouri*

SCHEDULE/BUDGET:

*The project was completed on time and
on within the allocated budget.*





PUBLIC ORCHARD

Worcester, England

CLIENT: University of Worcester

COMPLETION: 2011-ongoing

Sans façon

COST: \$2,000,000

The space at the Worcester University City Campus site is of significant size in a prominent location, making it an important space within the heart of the city. The opportunity was to create a site-specific work both visually bold and, as importantly, expanding the role of this space in the city. The idea of Public Orchard is to transform the expectation of a University campus by creating a shareable and usable public space between the University and the rest of the city, creating a productive and social landscape contextually unique to Worcester and to the campus.

Worcester's surrounding orchards have suffered greatly over the decades, and are in serious decline.

The concept for Public Orchard is to create the first purpose built public orchard in the UK, taking these 3.58 acres of the City Campus and turning them into a dedicated productive land in the middle of the city. The work takes the scale of the territory and uses landscaping as a medium to explore, challenge and expand traditional definition of public spaces.

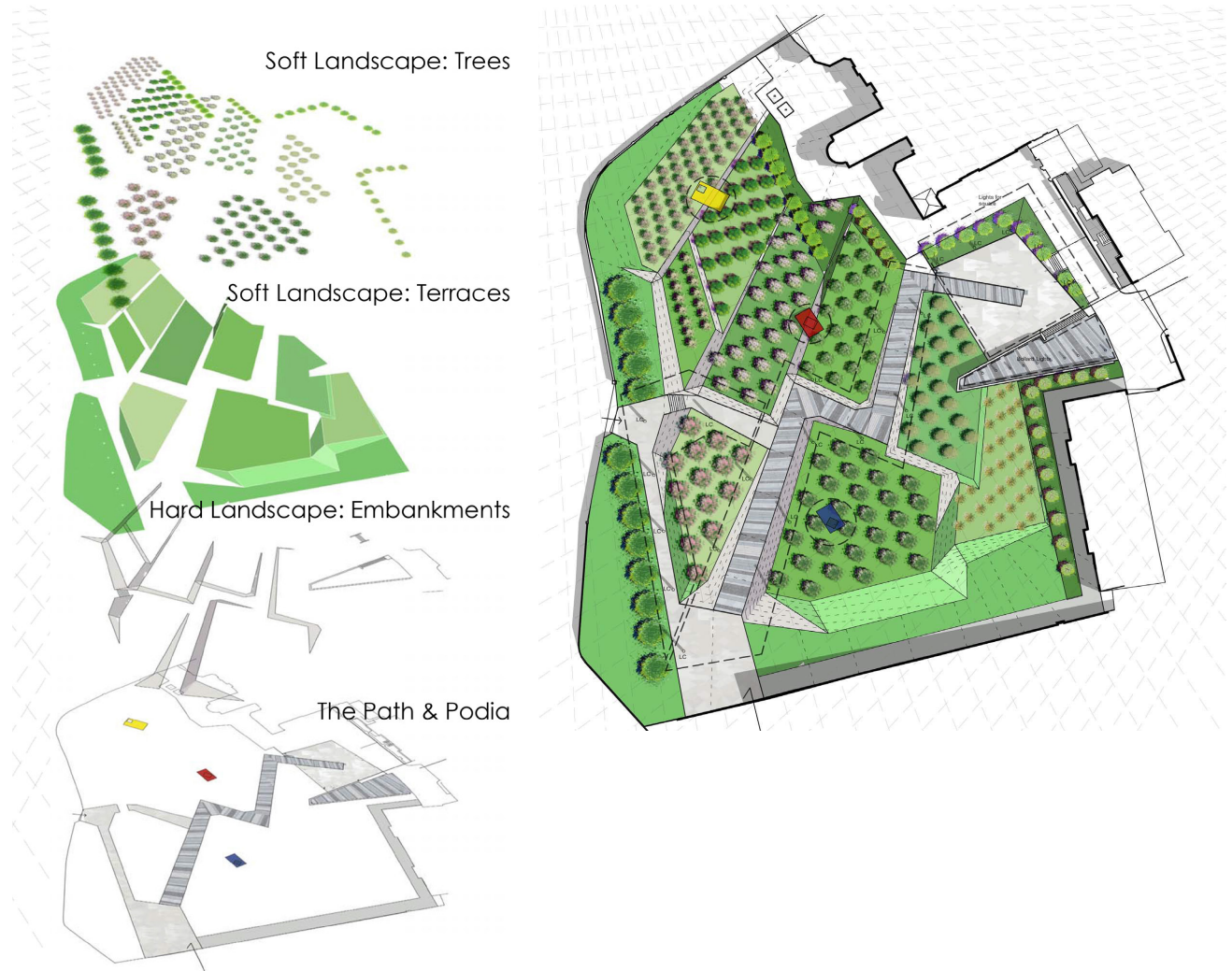
Public Orchard is designed by Sans façon in collaboration with Becky Sobell and BCA Landscape.

STAKEHOLDER ENGAGEMENT:

University of Worcester and Worcester citizens

SCHEDULE/BUDGET:

The project is under construction - on time and within budget.





PROMENADE

Bristol, England

CLIENT: Crest Nicholson Developers

COMPLETION: 2014

Sans façon

COST: \$1,500,000

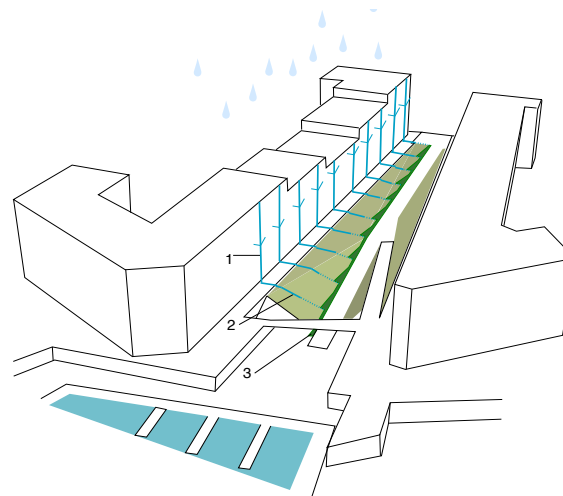
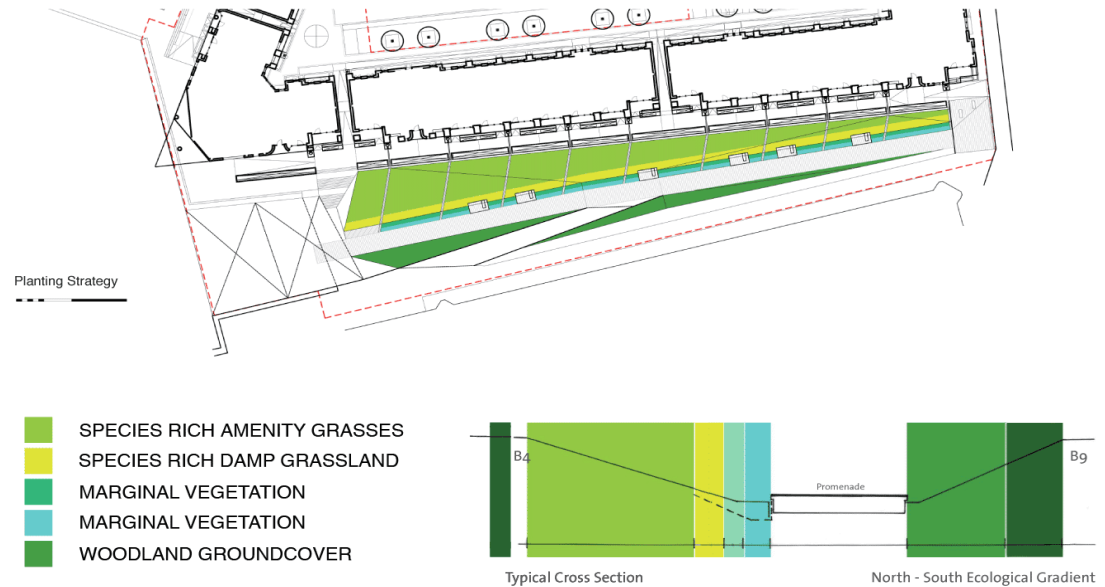
The main drive behind the design of the Promenade was to create a bold, simple space at the end of the Brunel Mile that complements the other mainly mineral spaces along it. A space with a clear identity, pleasant to walk through back and forth and stop alongside whilst not being a destination in itself, in dialogue with the harbourside, presenting the view to the SS Great Britain, working with and expressing the slipway aspect of the site. The Millennium Promenade is very similar to gully spaces in a 'natural' landscape. We directly used and presented the environment generated by the built form to create a landscape using the runoff rain water. The different growing conditions of the man-made gully space are highlighted with the use of a variety of biodiversity and habitats and the experience of the harbourside (ruderal plants, riparian habitat) is drawn up through the Promenade. The land formation has been shaped to enhance the gully character, a simple concave volume descending on both sides towards the middle of the space. Passing through the centre is a board walk, a direct route with side jetties allowing points of rest. Access to the meadow is open but not intended as a main thoroughfare, rather as a slower space of tall grasses you may wish to sit in or observe from the jetties when there is a breeze.

STAKEHOLDER ENGAGEMENT:

City of Bristol, Crest Nicholson Developers, arts and culture department

SCHEDULE/BUDGET:

The project is under construction - on time and within budget.





BERLAU
PAPER



PEDESTRIAN STRANDS

Kansas City, MO

el dorado INC

CLIENT: City of Kansas City **COMPLETION:** 2008 **COST:** \$825,000 **GENERAL CONTRACTOR:** el dorado inc, Collins & Herman, Westhues Electric

Pedestrian Strands is the latest collaboration between el dorado inc and artist James Woodfill. Sited on four highway bridges that connect the Downtown Loop with the Crossroads, the installation is considered a reparation of an interrupted pedestrian experience caused by the creation of the federal interstate in the 1960's. Utilizing abstracted photographs of important, place-defining adjacent buildings embedded in illuminated glass panels, Pedestrian Strands embraces a strategy that all components of the installation comprise the artwork – the glass, the mesh guardrail and custom end panels with laser cut identifying street names.

STAKEHOLDER ENGAGEMENT:

Charlotte Street Foundation; Crossroads Community Association; Westside Neighborhood Association; MODOT; KC Downtown Council; The City of Kansas City, Missouri

SCHEDULE/BUDGET:

The project was completed on time and on within the allocated budget.





LANDSCAPED EDGE

Kansas City, MO

el dorado INC

CLIENT: City of Kansas City, Missouri **COMPLETION:** 2007 **COST:** \$225,000 **GENERAL CONTRACTOR:** el dorado inc & Continental Steel

In 2006, el dorado teamed up with local motion graphics firm MK12 to win a competition to design the new guardrail system for the Wyandotte Bridge in downtown Kansas City. The design is the result of an intensive collaboration and integrates a novel (and MODOT code-compliant) structural design that serves to house an integral and easily-maintained lighting element. The graphics for the system suggest a rich diversity of natural landscaping which is a direct contrast to the expansive interstate system below. The “landscaping” will glow at night, providing a safe pedestrian path across the bridge in addition to an interesting visual element for the cars passing below on I-670.

STAKEHOLDER ENGAGEMENT:

Crossroads Community Association; MODOT; KC Downtown Council; The City of Kansas City, Missouri

SCHEDULE/BUDGET:

The project was completed on time and on within the allocated budget.





LIFT STATION

Calgary, Alberta

Sans façon

CLIENT: City of Calgary

COMPLETION: 2012-ongoing

COST: \$338,000 +\$2,200,000 for the building

As technical structures in our city lift stations are constructed to serve a purpose, a need, in as cost effective and as functional way as possible. They form part of the fabric of our communities, but they are often camouflaged, dismissed or ignored (as best they can) by the public.

Their place in the much larger network of city infrastructure is rarely given a second thought and yet they hold the capacity to connect us to our environment, Although a wastewater lift station is perhaps not the natural place to intrigue and fascinate the public, the Forest Lawn lift station prominence makes it an ideal situation to consider its utility as more than purely functional, as a place to talk about the wider system of water infrastructure throughout the city, to enrich our understanding and pleasure in the hidden world of urban water.

As a hint to the usual approach of trying to hide such structures, the envelop of the lift station is simplified and toned down, using camouflage methods to lower the impact of a structure. Through the perforated panels of the side facade, the minimized building becomes the canvas to present the exact map and flow of the wastewater infrastructure leading to the lift station, changing colour in accordance to the flow of the invisible system.

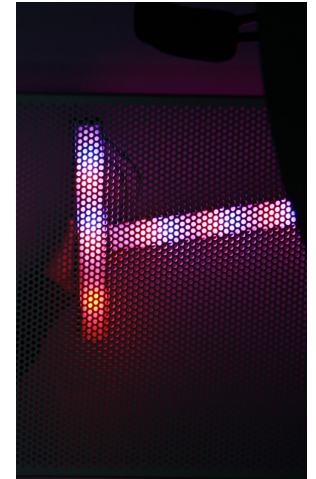
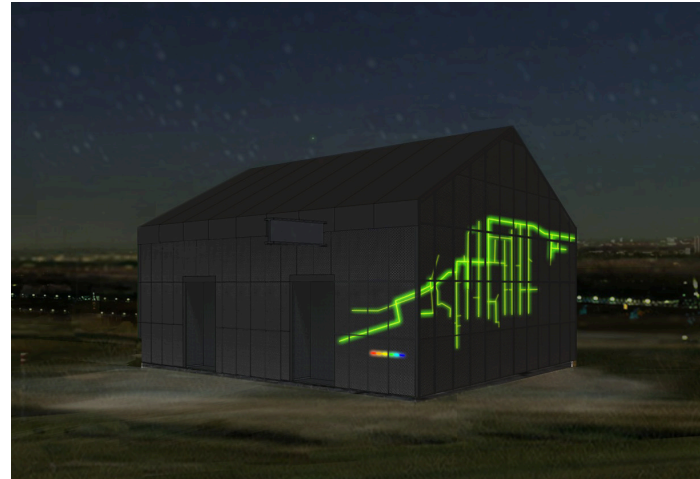
The lift station becomes an example of the capacity of technical and factual information to communicate, engage and intrigue citizens about the hidden infrastructures at work in our cities.

STAKEHOLDER ENGAGEMENT:

City of Calgary, UEP

SCHEDULE/BUDGET:

Project completed on budget and delivered ahead of schedule.





CULTIVATED WILDERNESS

Glasgow, Scotland

Sans façon

CLIENT: Gorbals Housing Association

COMPLETION: 2004

COST: \$300,000

In reaction to the planned destruction of one of the last remaining traces in an area weakened by 3 tabula rasa, Sans façon proposed to reconsider the fence planned by the developer. Sited between a public park and a new development, the existing wall was too low to act as a barrier. The project transforms the notion of a limit that excludes into a place that attracts. Set between two trellis, vegetal barrier weaves back and forth across the existing wall, revealing it as a relic covered by vegetation, and creating a series of spaces and benches. The barrier acts of a love-seat between the private and the public. As the wall evolves with time, the indigenous plants, will invade the steel trellis, transforming the preconception of a finished and manicured garden.

In collaboration with Matt Baker
Landscape architect: Loci Design

STAKEHOLDER ENGAGEMENT:

local community, Gorbals Housing Association

SCHEDULE/BUDGET:

Project completed on budget and as scheduled.





FRONT STREET MARKERS

Kansas City, MO

el dorado INC

CLIENT: City of Kansas City, Missouri COMPLETION: 2013 COST: \$350,000 GENERAL CONTRACTOR: el dorado inc

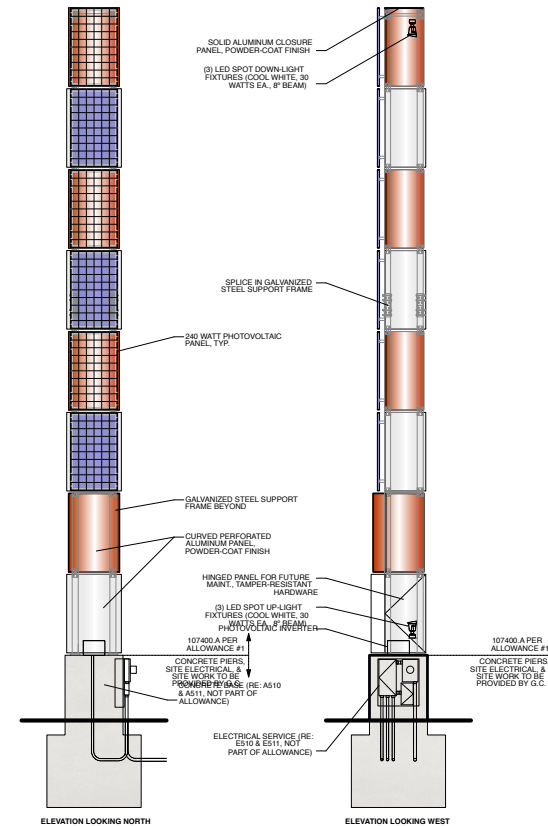
The City of Kansas City, MO hired el dorado to create a roadside marker to celebrate the important but largely unknown Northeast Industrial District. The Front Street Markers occupy the traffic island at the intersection of Front Street and Universal. A coal-fired power plant looms large on the horizon, the smokestack banded in red and white. Our basic idea was to link the form of this iconic red and white striped tower to sustainable energy capturing techniques. There are three markers in all, thin spires of rolled aluminum panels, perforated and powder-coated in alternating colors. A triangular steel structure supports the panels and holds a series of LED light fixtures. At the top, a number of the south facing aluminum segments are replaced by photovoltaic panels. The Front Street Markers call attention to a bustling group of businesses, and represent an idea of a place. They're an example of sustainable, resource-efficient ideas working on an industrial scale.

STAKEHOLDER ENGAGEMENT:

Northeast Industrial Association; The City of Kansas City, Missouri

SCHEDULE/BUDGET:

The project was completed on time and on within the allocated budget.



PUBLIC ART ADMINISTRATION

Because we work as artists in the public realm, our team intimately understands public art administration, often from the perspective of the artist. Ranging from public art master plans to selection processes and artist residencies, el dorado and Sans façon offer comprehensive public art administration services.

WATERSHED+ RESIDENCY

JOHNSON COUNTY PUBLIC ART MASTER PLAN

AMERICA: NOW AND HERE

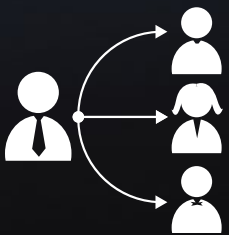
MOVING IN MOVING OUT

FREIGHTHOUSE ART



WATERSHED+ RESIDENCIES

at Ralph Klein Park



WATERSHED+ RESIDENCY

Calgary, Alberta

CLIENT: City of Calgary

Sans façon

COMPLETION: ongoing

Through its residency program, WATERSHED+ proposes a long term plan which represents a major step in taking creative practice further into the day-to-day activities of UEP and implementing new working methods and processes. Its guiding motive is to embed artists and, more specifically, their creative process within UEP core activities and the Calgary watershed. This program presents an innovative approach to public art and a distinct way of working with the public and other partners. Its ultimate ambition is to build an emotional connection between people and the watershed. As founding Lead Artist, Sans façon has been instrumental in setting up the WATERSHED+ residency program as a 25-year program to continuously engage new artists and meet the overarching goals of the initiative.

At any one time Watershed+ is delivering approximately 20 projects ranging from artists residencies, temporary events to permanent projects from the Micro to the Macro.

SUMMARY

The WATERSHED+ Artist Residency intends to support, promote and facilitate innovative and collaborative contemporary art practice.

The selected artists will broadly explore issues relevant to Calgary's watershed, water management and the Ralph Klein Park (RKP) environment. The residency will provide artists with research, equipment and produce new work in relation to these issues, with time, space and resources in a unique context.

In turn, the residencies will offer City of Calgary staff, the artist community and the public, the opportunity to engage with new work of national and international significance and enrich our understanding, appreciation and emotional connection to our environment.

The WATERSHED+ Artist Residency Program at RKP is a partnership between The City of Calgary's Public Art Program, UEP's and Environmental Protection Department, and Parks Environment & Education Initiatives.

The Residency program will offer two streams of continuing residency opportunities - a short term residency of up to four weeks in length and a long term residency for a minimum of three months in length (which does not have to be consecutive). The first residency will begin October, 2012. Artists of local, national and international prominence are encouraged to apply.

WATERSHED+ RESIDENCY - RKP Request for Qualifications

BACKGROUND

RALPH KLEIN PARK

RKP is Calgary's newest major park and is located within the Sheppard Stormwater Diversion Project - a 150-hectare (380-acre) man-made wetland that functions as both a stormwater storage facility and a treatment wetland that naturally filters stormwater. It is the largest constructed stormwater treatment wetland in Canada and provides a route for stormwater from the east side of the city to the Bow River. The wetlands also protect critical wildlife habitat through the natural wetland system which improves the quality of storm water entering the Bow River.

Historically, the Sheppard area is a part of a regionally significant wetland complex, which is an important migratory and breeding habitat for waterfowl. As part of this larger wetland complex, Sheppard provided connectivity for birds and other forms of wildlife that depend on wetland habitat for survival. This larger system includes the Hains Creek watershed in the north of Calgary and Frank Lake - directly east of High River - to the south.

Within the constructed wetlands, a 75-acre Park incorporates a range of facilities and activities including the Environmental Education Centre (EEEC), learning gardens, wetland viewing areas, interpretive trails and dog-walking areas. This Park is the first of three major park initiatives to provide park and open space amenities in future growth areas of Calgary.

The forms and influences on the Park design are inspired by the forms of the Canadian prairie - both natural and human influenced. The Park is a low-maintenance landscape intended to encourage exploration and discovery.

<http://www.calgary.ca/CSPP/Parks/Pages/Locations/EEC-park/RKLP-Ralph-Klein-Park.aspx>

<http://www.calgary.ca/UEP/Water/Pages/Construction-projects/Stormwater-quality-rehabilitation-projects/Sheppard-stormwater-diversion-project/Sheppard-Stormwater-Diversion-Project.aspx>

WATERSHED+ RESIDENCY - RKP Request for Qualifications

BACKGROUND

LEAD ARTISTS

The WATERSHED+ program was developed by artist team Sans façon through the CSPP Public Art Plan. Sans façon has been awarded the Lead Artist for the pilot period to establish and implement the initiative of WATERSHED+.

Sans façon began an investigation between British artist Tristan Soriano and French architect Claude Eliezer and has developed into an ongoing, collaborative art practice. Their work explores the complex relationship between people and place.

Over the past two years they have worked internationally on diverse projects of both a temporary, permanent and strategic nature.

<http://www.sansfacon.com>

WATERSHED+ RESIDENCY - RKP Request for Qualifications

RESIDENCIES

As part of WATERSHED+ program an artist studio space has been developed at Ralph Klein Park (RKP) for an ongoing artist residency program. The residency offers artists a unique opportunity to explore, experiment and engage in thoughts and conversations around Calgary's watershed, water management and the Park environment, resulting in an enriched understanding of contemporary artistic practice and the environment - for artists, the public and the City of Calgary staff.

During their residency, artists will be expected to engage with the RKP staff to promote collaboration and connections between contemporary art practice and natural and man-made processes on site, and potentially more broadly in the city.

The residency will provide artists the opportunity to research and develop their ideas through the production of new works in response to their time in RKP and the processes present on site (water treatment, natural environment, history and geology, urban watersheds, etc). Artists are encouraged to establish a collaborative relationship with Parks and water-related specialists. An aspect of this residency is expected to be publicly accessible and artists will have the opportunity to define how they intend to interact with a wider public.

The artist will have the support and work closely with members of the WATERSHED+ team throughout their term in residence.

A purpose built individual artist studio space will be provided at RKP, positioned on the top floor of the EEC building overlooking the natural wetlands, with access to workshop with a selection of basic hand and power tools. Access to special equipment requirements may be negotiated.

The artist in residence will be responsible for their own hours of work. It is anticipated however that the studio will be used as the main place of work, and artist in residence artists are required to dedicate the majority of their time to this residency.

For the long term residency the artist will be provided with accommodation options within the accommodation allowance. Artists are not required to accept the accommodation if they wish to make alternative arrangements.

WATERSHED+ RESIDENCY - RKP Request for Qualifications

SUBMISSION REQUIREMENTS

The deadline for application is **Monday, July 16, 2012**. We do not accept postmark submissions. Submissions must be received by Monday, July 16, 2012.

This opportunity is open to local, national and international artists of all disciplines. Artists applying for the WATERSHED+ Residency Program at Ralph Klein Park must submit the following information:

1. Letter of Interest (max 1 page)

Submit a signed Letter of Interest outlining an overview of your approach to this self-directed residency. Include your background, qualifications and relevant past experience. Include details on your experience working with art budgets and schedules. If possible, give insight into your experience collaborating with multidisciplinary teams and your knowledge of working within a public process (not a prerequisite).

NB: We would like to understand your interest at this stage. We do not want a proposal.

2. Curriculum Vitae (max. 2 pages)

Include current contact information

3. References

Provide a minimum of two professional references and include their name, address, e-mail and telephone.

4. Images (max. 10)

Images must be presented in a PDF slide show and be compatible with P.C. Please include an annotated image list.

The application requirements are the same for Long and Short-Term residencies.

WATERSHED+ RESIDENCY - RKP Request for Qualifications

SELECTION PROCESS

The WATERSHED+ Artist Residency Program is a two-stage application process. Submissions are jury reviewed and a short list of applicants will be produced from the initial application review.

Short-listed artists will be given two weeks to submit a detailed proposal for how they intend to use their time at the Residency, ideas that will be explored, what they will be working on, how they intend to engage with the wider public, resources they may need, etc. A telephone interview will be conducted with those short-listed following submission of proposals. There will be between 1 to 5 artist residencies awarded at this time.

Short-listed artists can expect to hear back within three weeks of the close of the call.

The selected artist will be required to sign the City's artist master agreement, and provide proof of appropriate insurance prior to being awarded a residency.

ARTIST MASTER AGREEMENT
The Artist Master Agreement is a bilateral agreement, necessary for up to five years, and is not contract specific. To view the referenced document at The City website, www.calgary.ca/uep and click on "Public Management Terms and Conditions" - Artists should review prior to submitting an application.

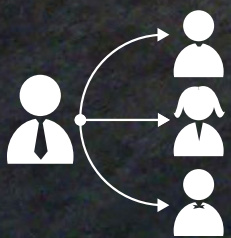
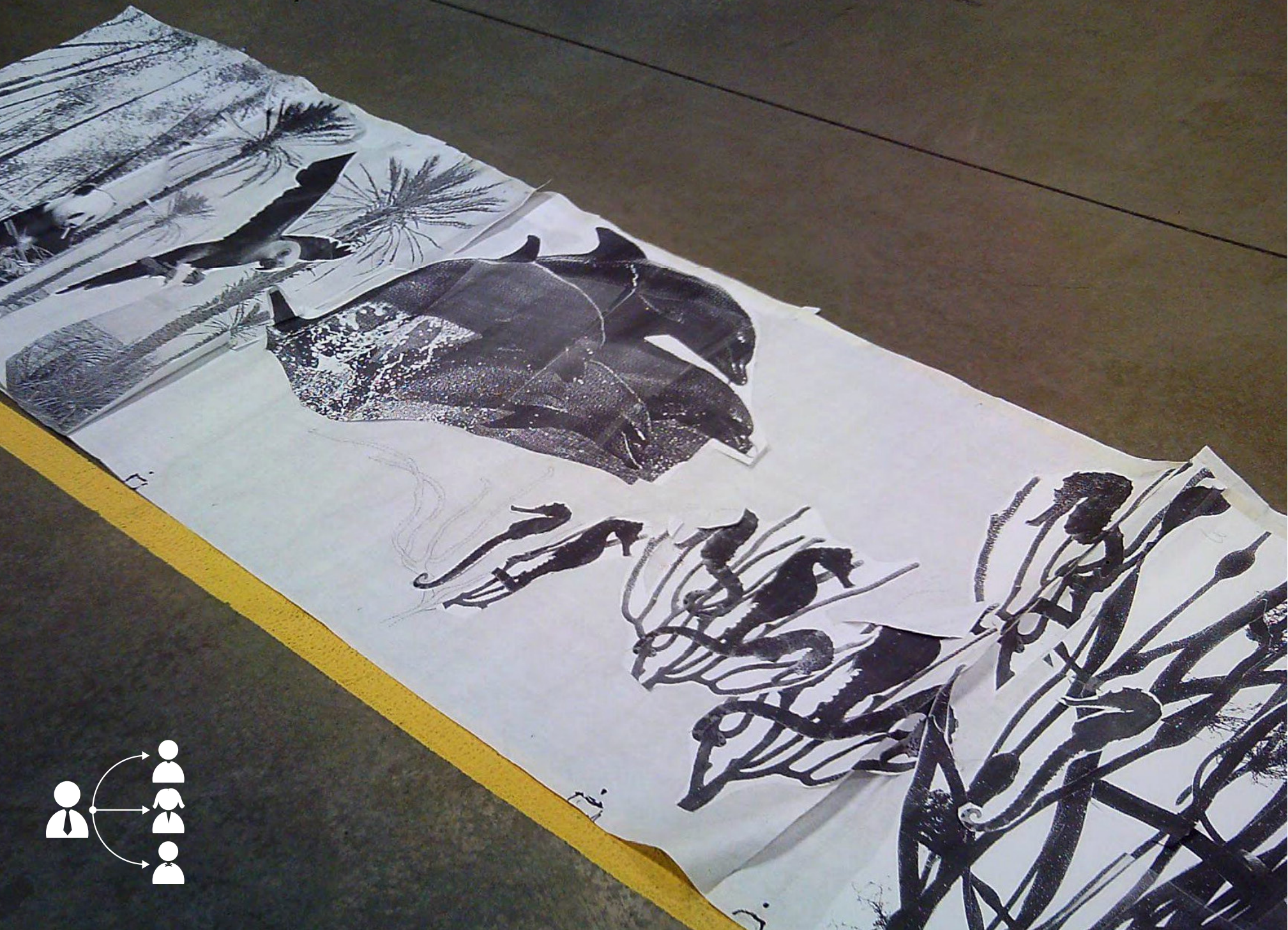
INSURANCE REQUIREMENTS
As per Clause 7 of the artist Master Agreement, proof of insurance will be considered a condition of participation with the City. Please review prior to submitting for this opportunity - www.calgary.ca/uep

Please submit applications to: **WATERSHED+ Residency** randy.neseman@calgary.ca

or **WATERSHED+ Residency**
Attn: Randy Neseman
City of Calgary
Water Centre
625-25 Avenue SE
Calgary, AB T2G 4K8

For more information or questions please contact Randy Neseman, WATERSHED+ Project Development: randy.neseman@calgary.ca

WATERSHED+ RESIDENCY - RKP Request for Qualifications



JOHNSON COUNTY PUBLIC ART MASTER PLAN

Johnson County, KS

el dorado INC


COMPLETION: ongoing

CLIENT: Johnson County Public Art Commission

As a Public Art Commissioner, el dorado's Josh Shelton has been enlisted to collaborate with Hesse Mcgraw, the Public Art Commission and Johnson County Facilities in the preparation and implementation of a Master Plan for public art in Johnson County. Through this Master Plan, the Public Art Commission (PAC) has prioritized artistic activity that seeks to benefit the public life of Johnson County. This strategy not only holds clear benefit for the citizens of the County, but is unique in its ability to make a strong connection between the community's values and individual citizens and visitors. We recognize that Johnson County has the opportunity to let public art provide a service to the County, and that service is to reflect the community's values, to engage its citizens, to educate and illustrate, to drive activity, to inform, and to inspire.


What can highly integrated public artworks do for Johnson County?

Public Art Commission Master Plan



Eddie Estate #8, Fritz Haeg

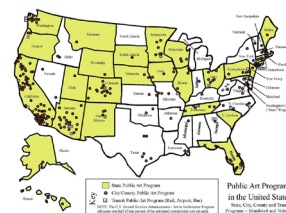
This garden landscape is located on a rare patch of open, south-facing land in the middle of Manhattan. The residents of Eddie-Children House, members of the Hudson Guild community, visiting students, and the general public become more aware of organic growing cycles as they watch the garden evolve through the seasons and years.



Water pipes were filled with water from the Bow River with the quantity of water chosen in each pipe model approximating the amount of water present in various plants and animals commonly found in the watershed. For mammals and birds, this consisted of about 80% of their total weight, while for trees about 80% and for the alpine larch, 50%. The species selected ranged in size from a five-toothed Alberta rose (the smallest tree chosen) to a young female grizzly bear (the largest piece of ice).

San Facion, Watershed - The City of Calgary has imbedded artists from San Facion in their water works...

NATIONAL PUBLIC ART PROGRAMS



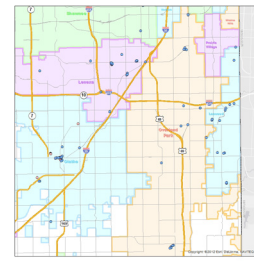
Public Programs in the United States

COMPARATIVE ART PROGRAMS

Select U.S. Municipal Art Agencies, Public Art Programs / Sorted by Population Growth 2010 to 2012

Agency	Agency Name	Agency Type	Population	Year
1	Atlanta	City	420,000	2012
2	Atlanta GA	City	420,000	2012
3	Atlanta	City	420,000	2012
4	Atlanta	City	420,000	2012
5	Atlanta	City	420,000	2012
6	Atlanta	City	420,000	2012
7	Atlanta	City	420,000	2012
8	Atlanta	City	420,000	2012
9	Atlanta	City	420,000	2012
10	Atlanta	City	420,000	2012
11	Atlanta	City	420,000	2012
12	Atlanta	City	420,000	2012
13	Atlanta	City	420,000	2012
14	Atlanta	City	420,000	2012
15	Atlanta	City	420,000	2012
16	Atlanta	City	420,000	2012
17	Atlanta	City	420,000	2012
18	Atlanta	City	420,000	2012
19	Atlanta	City	420,000	2012
20	Atlanta	City	420,000	2012
21	Atlanta	City	420,000	2012
22	Atlanta	City	420,000	2012
23	Atlanta	City	420,000	2012
24	Atlanta	City	420,000	2012
25	Atlanta	City	420,000	2012
26	Atlanta	City	420,000	2012
27	Atlanta	City	420,000	2012
28	Atlanta	City	420,000	2012
29	Atlanta	City	420,000	2012
30	Atlanta	City	420,000	2012
31	Atlanta	City	420,000	2012
32	Atlanta	City	420,000	2012
33	Atlanta	City	420,000	2012
34	Atlanta	City	420,000	2012
35	Atlanta	City	420,000	2012
36	Atlanta	City	420,000	2012
37	Atlanta	City	420,000	2012
38	Atlanta	City	420,000	2012
39	Atlanta	City	420,000	2012
40	Atlanta	City	420,000	2012
41	Atlanta	City	420,000	2012
42	Atlanta	City	420,000	2012
43	Atlanta	City	420,000	2012
44	Atlanta	City	420,000	2012
45	Atlanta	City	420,000	2012
46	Atlanta	City	420,000	2012
47	Atlanta	City	420,000	2012
48	Atlanta	City	420,000	2012
49	Atlanta	City	420,000	2012
50	Atlanta	City	420,000	2012

EXISTING ASSETS - Johnson County



Active Johnson County PACs
Active City PACs

Johnson County Goals

Johnson County 2030: Living Our Vision

Recommended Actions

Support Increased Access to Parks and Recreation

Develop Broad-based, Sustainable Support for the Arts

- Encourage arts and humanities organizations to work collaboratively in building broad-based sustainable support for the arts and arts-related initiatives in Johnson County.


Promote innovation in the delivery of library services

Identify new ways to engage all sectors of the community

- Coordinate with organizations and groups that engage volunteers and promote community service, philanthropy, and positive change to develop a central clearinghouse for information about volunteer opportunities and to identify new ways to involve the community's youth, under-represented populations, and others in community service activities.


Support programs and services that are inclusive and accessible

- Support programs and services that promote acceptance, inclusion, and respect for cultural and ethnic diversity. Ensure programs and services are accessible to residents of all abilities and means.



Theater Gates, Dorchester Projects, Chicago, Illinois

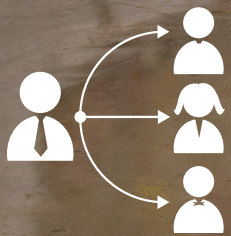
Acquisition of an Abandoned 2 story property for reuse as a Library, Slide Archive and Small Food Kitchen. Dorchester Projects encompasses a cluster of formerly abandoned buildings on Chicago's South Side that Theater Gates renovated from sites of neglect into a vibrant cultural locus. After making his home in a former storefront on South Dorchester Avenue, Gates purchased the neighboring two-story vacant house and initiated a design project to restore and reconfigure the home as a site of community interaction and uplift. The success of this project led to the acquisition of a third building across the street, which with the support of grants will be redeveloped as a space for film programming and artist residencies.



Project Row Houses, Houston, Texas

Project Row Houses (PRH) is a neighborhood-based nonprofit art and cultural organization in Houston's Northern Third Ward, one of the city's oldest African-American communities. PRH began in 1993 as a result of discussions among African-American artists who wanted to establish a positive, creative presence in their own community. Artist and community activist Rick Lowe spearheaded the pursuit of this vision when he discovered the abandoned 1 1/2 block site of twenty-five shotgun-style houses in Houston's Third Ward.

The shotgun houses became the perfect opportunity to pursue the creation of a new form of art. They had two key elements: 1) a beautiful form recognized by the renowned Houston artist Dr. John Biggers to be filled with architectural, spiritual, and social significances, and 2) a need for social cohesion among the community to bring the project to life.



AMERICA: NOW AND HERE

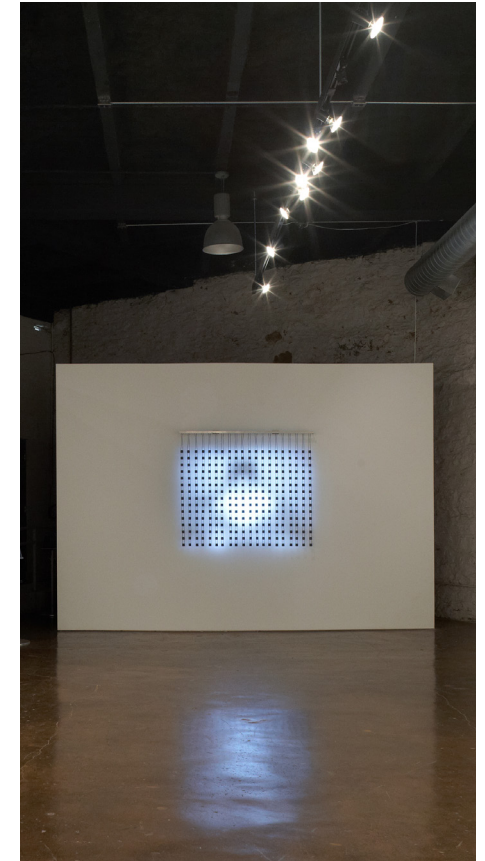
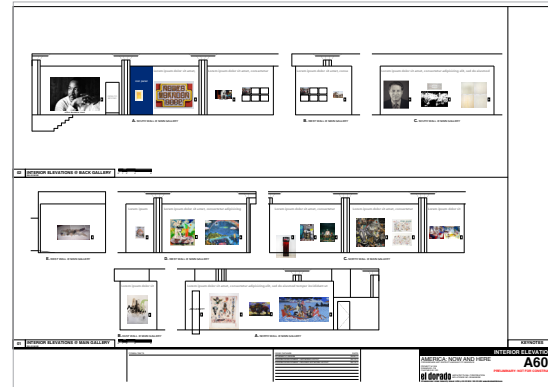
Kansas City, MO

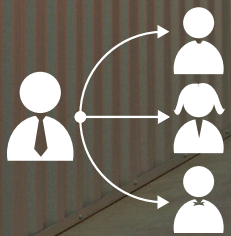
CLIENT: Lee H. Skolnick Architecture + Design

el dorado INC

COMPLETION: 2011

el dorado worked with “America: Now and Here” and the Lee H. Skolnick Architecture + Design Partnership to transform the Leedy-Voulikos Art Center into five galleries and a retail store tailored specifically for the opening of the traveling installation. “America: Now and Here” was created by painter Eric Fischl to start a conversation about what it means to be an American today. It features over 150 works of art about America, all created after 9/11, from a wide range of disciplines. Painters, photographers, poets, playwrights, musicians, sculptors, and filmmakers, both local and national, are all represented in the show. Kansas City was chosen as the first venue for the event, which then packed up into six eighteen wheelers to travel around the country, stopping in small towns and big cities alike for exhibition, performances, and above all, conversation.





MOVING IN MOVING OUT

Topeka, KS

CLIENT: Botwin Family Partners LP

SIZE: 24,000 sf

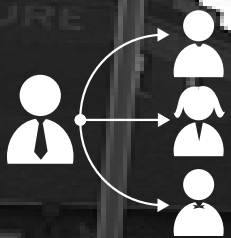
COMPLETION: 2004

COST: \$10,000

el dorado INC

This unique art exhibition began with the development of the FLEX project, an el dorado designed self storage facility in Topeka, Kansas. Elwood (the public art collaborative of James Woodfill and el dorado) and Hesse McGraw (a San Francisco based arts professional) worked closely in its creation. A collaborative, non-hierarchical structure was established that amplified the potential of site specific art. Within this structure, the roles of artists, curators, architects and the developer were remarkably integrated. This allowed the artists the opportunity to more fully develop a specific artistic response to the site. Featured artists included Jordan Nickel, Mike Sinclair, Marcie Miller Gross, and Miles Neidinger.





FREIGHTHOUSE ART

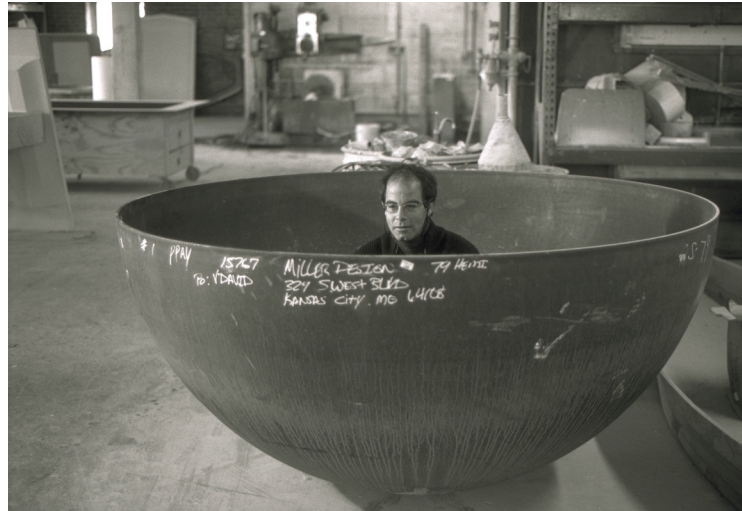
Kansas City, MO

CLIENT: Freight House LLC

COMPLETION: 2000

el dorado
INC
GENERAL CONTRACTOR: el dorado inc

After working on the Crossroads site development and lighting, el dorado inc received a commission from the developer to coordinate the commission and installation of public art work on his property. In developing the project site, the Owner desired that all components of the program--from parking lot and landscaping design to site lighting, signage and public art--reflect the rustic yet urbane nature of the burgeoning Crossroads area. Kinetic sculpture from D.F. Miller, Karen McCoy and James Woodfill was developed, fabricated and installed with coordination by el dorado inc.



IN HOUSE ART FABRICATION

As urban design lead, el dorado has the unique qualification of in-house art fabrication. Whether working as public artist or collaborating with other artists and stakeholder groups, our shop has contributed to dozens of urban scale public art projects throughout the region. Our shop has positioned el dorado to mentor some of the top emerging artists in Lawrence and Kansas City.

PULSE

OAK GARAGE SIGNAGE

A.L.E./BOTWIN BUILDING

CAUSE + EFFECT

BROADWAY BRIDGE



PULSE

Kansas City, MO

el dorado INC

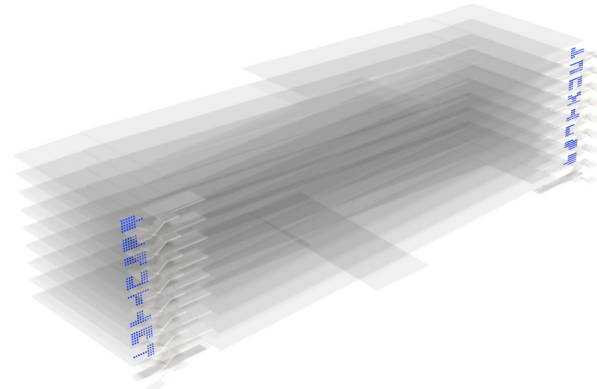
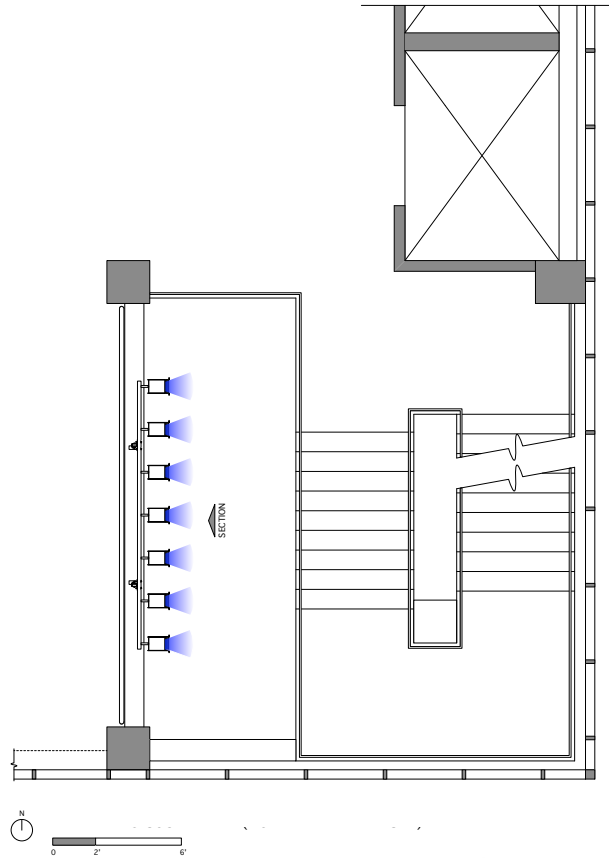
CLIENT: City of Kansas City, Missouri

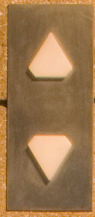
COMPLETION: 2003

COST: \$225,000

GENERAL CONTRACTOR: JE Dunn

el dorado collaborated with the artist James Woodfill in the design of this permanent installation in the Wolf Parking Facility in downtown Kansas City. Located in the stairwells of the building, PULSE is inspired by the existing patterns and rhythms naturally occurring within the structure and the site. Through PULSE, participants are invited to reconsider their understanding of urban interaction by allowing them the opportunity to experience the complex layering of space and activity in the parking facility. Through the use of light and sound “tools” developed specifically for the project, PULSE registers participation in the building and broadcasts a summary of the experience to the area surrounding the parking facility.





ZIHNA



In Case Of Fire
Elevators Are Out Of Service



Use Exit

UP

DN

2



OAK GARAGE SIGNAGE

Kansas City, MO

el dorado INC

CLIENT: Eric Bosch, AIA

COMPLETION: 2008

COST: \$798,000

GENERAL CONTRACTOR: Star Signs, LLC

Since it opened in 2003, users of the Oak Garage across from City Hall have had a hard time navigating the facility due to a complex double helix crossover parking design. el dorado was called upon to develop a comprehensive signage and wayfinding system to help garage users remember where they parked. In collaboration with Willoughby Design Group, a wayfinding system was developed whereby each level can be identified through the use of “face and name” recognition. Elevator areas on the north half of the garage are identified by male faces and names, with each ascending level associated with gradually increasing ages. The south half uses female individuals to similar effect. The signage design was the result of careful research and analysis process that included studies in human perception, pattern recognition and mnemonics.





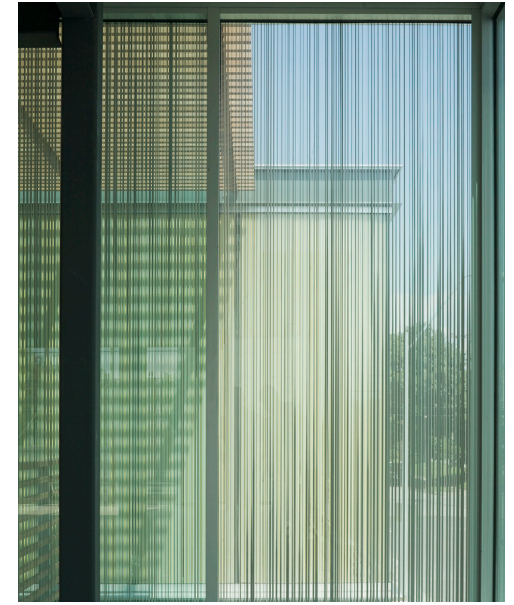
A.L.E./BOTWIN BUILDING

Kansas City, MO

el dorado
INC

CLIENT: Botwin Family Partners, LP **COMPLETION:** 2008 **COST:** \$2,400,000 **GENERAL CONTRACTOR:** Hoffman Cortes

The owner of the site of the recently burned Waldo Theater commissioned el dorado to design a new mixed-use center which could continue to accommodate small local businesses while introducing accessible and sustainable approaches for development at a neighborhood scale. The design for the new building includes complete ADA accessibility egress, natural ventilation, a planted roof and Anne Lindberg's art installation "Slips and Shifts" which doubles as a sun screening device for the upper level glazing system. This project follows up a previous collaboration with Anne Lindberg in which we fabricated the "Articulating Lindberg Extender" upon which Anne drafts her series of parallel line drawings. The same parallel lines found in her graphite Parallels series enhance the upper panels of glass in the form of dual layer ceramic frit printed on 52 panels.





CAUSE + EFFECT

Kansas City, MO

CLIENT: Port Authority of Kansas City, Missouri

COMPLETION: 2010

COST: \$40,000

GENERAL CONTRACTOR: el dorado inc

el dorado INC

Sited close to a major electrical substation located on the edge of downtown Kansas City, Missouri, the Missouri River and a popular recreational trail, Cause + Effect is an invitation for the public to consider where power comes from, how it is generated and how it is conveyed. Rather than passing judgment on power-generation methods, our interest in the project was in using the requisite generative elements – PV panels, wind turbines and a battery cabinet – as compositional elements working in tandem with other non-conventional artist media – ubiquitous galvanized steel and plastic barrels. The installation is 100% off the grid.





BROADWAY BRIDGE

Kansas City, MO

el dorado
INC

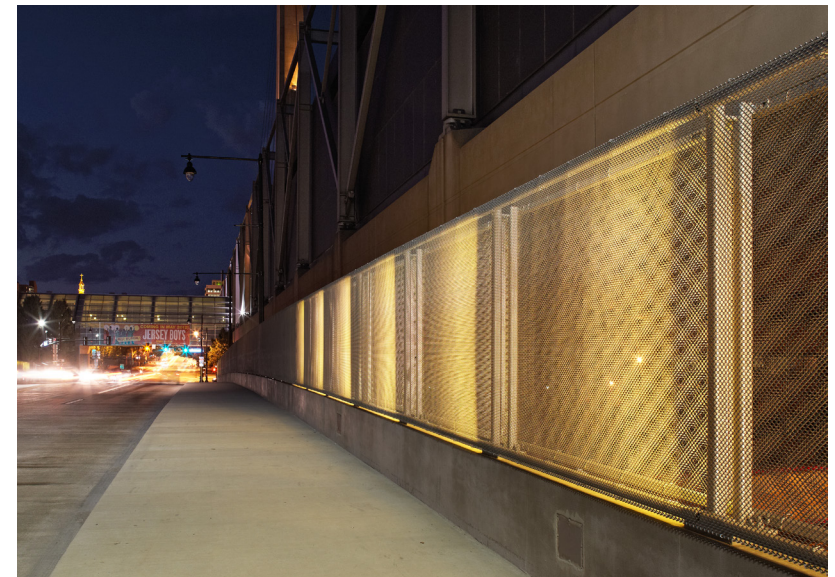
CLIENT: City of Kansas City, Missouri

COMPLETION: 2011

COST: \$350,000

GENERAL CONTRACTOR: el dorado inc and GBA

The Broadway Overpass was the final project in a series of bridge enhancements linking the urban core of downtown Kansas City to the Crossroads Arts District, across the buried interstate highway that divides it. LED strip lights are mounted to the steel posts of the railing, illuminating the alternating interior layers of colored acrylic acoustic panels and yellow PVC-coated mesh. These varying layers filter light and create moiré patterns that change intensity when perceived at different speeds and angles, by car and foot. Sound attenuation, widened sidewalks, and lighting create a safer and more welcoming environment for pedestrians.



WORKING WITH NON-PROFIT AND ARTS CULTURE ORGANIZATIONS

Since its conception, el dorado has provided architectural services for a wide variety of nonprofit organizations. Over the years we have developed a special knack for meeting the needs of arts-related nonprofits and community building nonprofits.

LA ESQUINA

SOCIETY FOR CONTEMPORARY PHOTOGRAPHY

BEMIS GARDEN

HARDESTY RENAISSANCE MASTER PLAN

HABITAT FOR HUMANITY PROTOTYPE HOUSING

NEIGHBORWORKS

LAWRENCE ARTS CENTER



LA ESQUINA

Kansas City, MO

CLIENT: Charlotte Street Foundation

COMPLETION: 2007

SIZE: 2000 sf

GENERAL CONTRACTOR: C & G Construction

el dorado INC

La Esquina, a new contemporary art and performance space located in a Hispanic neighborhood in Kansas City, is the result of a creative design partnership between el dorado and Charlotte Street Foundation, a grass-roots non profit arts organization. Since its completion, La Esquina has served as a neighborhood cultural anchor as well as a leading regional voice for contemporary art within the Midwest.





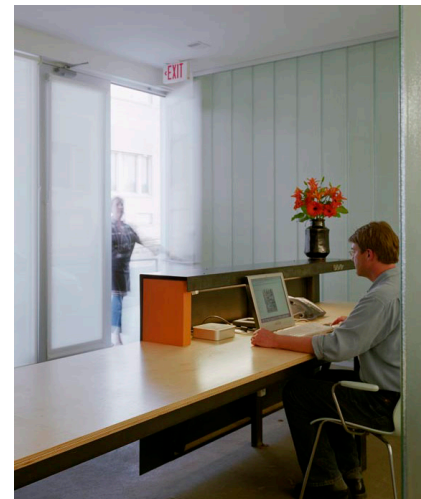
SOCIETY FOR CONTEMPORARY PHOTOGRAPHY

Kansas City, MO

el dorado INC

CLIENT: Paragon Partners LLC **COMPLETION:** 2006 **GENERAL CONTRACTOR:** C & G Construction

The Society for Contemporary Photography, a Kansas City based not for profit organization, desired a new facility to house their exhibition, administration, assembly and storage needs. Operating under tight budgetary and spatial constraints, el dorado worked diligently to maximize the the functional and spatial impact of the project. The resulting architectural and lighting design is elegant and spare without being cold. It allows the director of the facility to easily manipulate the volume in order to create compelling contemporary environments that reinforce the themes of the different shows. A neutral color palette and careful consideration of the ceiling and floor plans further amplifies the primacy of the walls--an important consideration in the design of successful exhibition space.





Dennis Center

Dennis Center



BEMIS GARDEN

Omaha, NE

CLIENT: Bemis Center for Contemporary Arts

el dorado
INC

COMPLETION: ongoing

For thirty years, the Bemis Center for Contemporary Arts has been a hotbed of artistic experimentation, a contemporary gallery space that's as much about creation as it is exhibition. Bemis chief curator Hesse McGraw recently invited us to participate in one of the Bemis Garden Design Charrettes, an open-ended conversation involving a number of students, artists, and design professionals. The ultimate goal of the charrette was to arrive at a design solution for the Bemis Gardens, which is part of a large concrete loading dock that's also the main entrance to the facility. In collaboration with Jim Woodfill, Jeff Day, and a group of University of Nebraska students, we proposed a new entry stair, a two-level garden space, and a steel canopy over the entry door. Thin cables extend up from three planter boxes and across the existing steel canopy for vines to climb and shade the open dock space.





HARDESTY RENAISSANCE MASTER PLAN

Kansas City, MO

CLIENT: Asian Americans For Equality

SIZE: 18.5 acres

el dorado
INC

COMPLETION: ongoing

Asian Americans For Equality, a non-profit organization, is partnering with el dorado inc to complete a long-term economic development of a former Federal complex. The future program of the site will meet community needs, create jobs, and establish AAFE's presence in northeastern Kansas City. Phased renovation of the site and its six buildings, totaling 572,000 s.f., will link people, organizations and resources to create a complex for local food, business, transportation, micro lending and housing. The Hardesty Renaissance project involves a comprehensive team approach that includes community outreach, master planning, project phasing analysis, sustainable design charrettes, multi-disciplinary problem solving, municipal engagement, and effective communication models.





HABITAT FOR HUMANITY PROTOTYPE

Kansas City, MO

CLIENT: Heartland Habitat for Humanity

SIZE: 1,300 sf

COMPLETION: 2014

COST: \$125,000

el dorado
INC.

Public Architecture's 1% for Habitat Initiative matched el dorado inc with Heartland Habitat for Humanity to design and build a home that surpasses the organization's already strict design and sustainability standards. Our prototype features three bedrooms and two baths, in a flexible layout that can be modified to accommodate both front-loaded and rear-loaded sites. A slab-on-grade foundation allows for full ADA accessibility. We used simple shading, orientation and ventilation principles to maximize the dwelling's responsiveness to the environment, and we positioned the garage and living space to create usable outdoor space. A garden and water collection system encourage families to spend more time outdoors, reducing energy consumption and introducing them to sustainable practices. The program aligns with Heartland Habitat's mission to build simple, decent homes and communities for people in need.





NEIGHBORWORKS

Kansas City, MO

CLIENT: NeighborWorks America

SIZE: 12,850 sf

COMPLETION: 2010

COST: \$826,000

el dorado INC

NeighborWorks America is a non-profit organization that works to provide affordable housing for lower-income people in safe, sustainable neighborhoods. Their Kansas City office, located on the 7th floor of One Main Plaza, has a simple, logical floor plan. We pulled the work spaces away from the windows, making room for a shared space with open seating that gives everyone in the office access to views and daylight. The individual offices are divided by panels of frosted glass, allowing light to enter all workspaces while still providing privacy. We pushed the conference rooms and services to the center of the floor plate, and bookended the offices with walls of tongue-in-groove maple. The design prompted NeighborWorks to switch over completely to laptops, allowing people to meet and work in the light-filled common spaces. el dorado fabricated a number of custom pieces of furniture for the office, including a handicapped-accessible, multi-level conference table and casework lining the exterior walls.





Lawrence Arts Center

PARADE SPONSORS

- 1. [Sponsor Name]
- 2. [Sponsor Name]
- 3. [Sponsor Name]
- 4. [Sponsor Name]
- 5. [Sponsor Name]
- 6. [Sponsor Name]
- 7. [Sponsor Name]
- 8. [Sponsor Name]
- 9. [Sponsor Name]
- 10. [Sponsor Name]
- 11. [Sponsor Name]
- 12. [Sponsor Name]
- 13. [Sponsor Name]
- 14. [Sponsor Name]
- 15. [Sponsor Name]
- 16. [Sponsor Name]
- 17. [Sponsor Name]
- 18. [Sponsor Name]
- 19. [Sponsor Name]
- 20. [Sponsor Name]
- 21. [Sponsor Name]
- 22. [Sponsor Name]
- 23. [Sponsor Name]
- 24. [Sponsor Name]
- 25. [Sponsor Name]
- 26. [Sponsor Name]
- 27. [Sponsor Name]
- 28. [Sponsor Name]
- 29. [Sponsor Name]
- 30. [Sponsor Name]
- 31. [Sponsor Name]
- 32. [Sponsor Name]
- 33. [Sponsor Name]
- 34. [Sponsor Name]
- 35. [Sponsor Name]
- 36. [Sponsor Name]
- 37. [Sponsor Name]
- 38. [Sponsor Name]
- 39. [Sponsor Name]
- 40. [Sponsor Name]
- 41. [Sponsor Name]
- 42. [Sponsor Name]
- 43. [Sponsor Name]
- 44. [Sponsor Name]
- 45. [Sponsor Name]
- 46. [Sponsor Name]
- 47. [Sponsor Name]
- 48. [Sponsor Name]
- 49. [Sponsor Name]
- 50. [Sponsor Name]



LAWRENCE ARTS CENTER

Lawrence, KS

CLIENT: Lawrence Arts Center

el dorado^{INC}

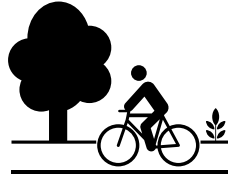
COMPLETION: ongoing

For the past three years, el dorado has served as a pro-bono design and public art advisor to the Lawrence Arts Center. el dorado has assisted with grant writing, facility modifications, new public art initiatives and site master planning in effort to help the Lawrence Arts Center anticipate the expanding needs of its creative community. Through this partnership, el dorado has become familiar with many stakeholder groups that comprise the creative community of Lawrence, KS.



REFERENCES:

URBAN DESIGN AND STREETSCAPING



el dorado inc: Rick Usher, Assistant City Manager; City of Kansas City, Missouri
Richard.Usher@kcmo.org, 816.513.6559

Coen + Partners: Peter Brown, Consultant to the City, Project Manager for the Nicollet Mall renovation
peter@peterhendeebrown.com

Bartlett & West: Crystal Miles, Landscape Supervisor; City of Lawrence, Kansas
785.832.7970

Bartlett & West Lynne Braddock Zollner, Historic Resources Administrator; City of Lawrence
785-832-3151

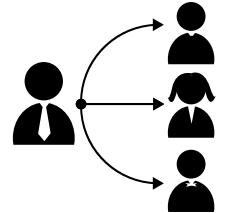
PUBLIC ART & CIVIC INFRASTRUCTURE



el dorado inc: Porter Arneil, Director of 1% for the Arts Program; City of Kansas City, Missouri
Porter_Arneill@kcmo.org, 816.513.2538

Sans façon: Paul Fesko, Manager of Strategic Services for the City of Calgary's Water Resources Department
paul.fesko@calgary.ca

PUBLIC ART ADMINISTRATION



el dorado inc: Hesse McGraw, Vice President for Exhibitions and Public Programs; San Francisco Art Institute
hmcgraw@sfai.edu, 816.695.7734

Sans façon:
Heather Aitken, Program Coordinator of Public Art Program; City of Calgary
Heather.Aitken@calgary.ca, 403.476.4326

IN-HOUSE ART FABRICATIONS



el dorado inc: Anne Lindberg, Artist
anne@annelindberg.com, 816.210.2633;

el dorado inc: Janet Zweig, Artist
janetzweig@gmail.com, 718.625.2376

WORKING WITH NON-PROFIT & ARTS CULTURE ORGANIZATIONS



Coen + Partners: Peter Farstad, Chief Operations Office, LifeSource Inc
pfarstad@life-source.org, 651.603.7841

Coen + Partners: Abbie Loosen, Project for Pride in Living
612.455.5220

el dorado inc: Kate Hackman, Charlotte Street Foundation
katehackman@gmail.com, 816.522.6024

el dorado inc: Ron Johnston, Neighborworks America
RJohnston@nw.org, 913.522.1256

el dorado inc: Dana Gibson, Westside Housing Organization
gib@kcloft.com