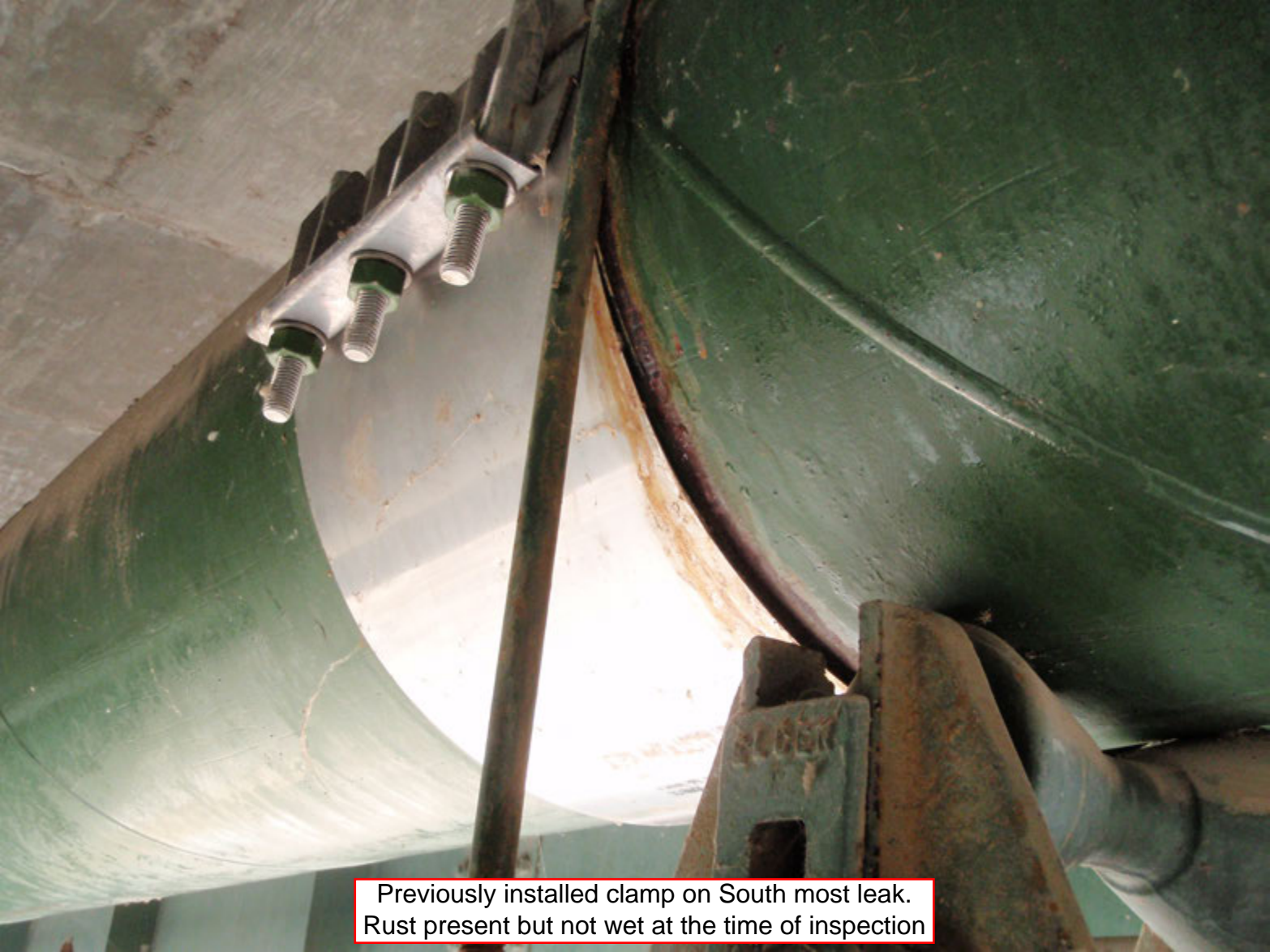




Looking South from far North end. Note lack of access to the top of pipe and the debris deposited limiting inspection above the spring line.



Weeping rust spot midline of the pipe between the two previous leaks. This area to have a repair clamp installed as a preventative measure.



Previously installed clamp on South most leak.  
Rust present but not wet at the time of inspection



Coupling offset since coating. No evidence of leakage. Only one seen like it.



Coating failure and surface corrosion



Failed coating and surface rust



Dragging damage, failed coating and surface rust



Imperfection in the rolled steel  
with resulting rust





Imperfection in the rolled steel bottom of pipe in the same area as the previous with resulting rust



Failed coating and surface rust



General area of failing coating and surface rust includes the area on previous slide



Paint failure



Paint failure



Typical coupling condition



Coupling with atypical coating failure and rust



Same coupling with atypical coating failure and rust





Unique View of the  
River and Bridges