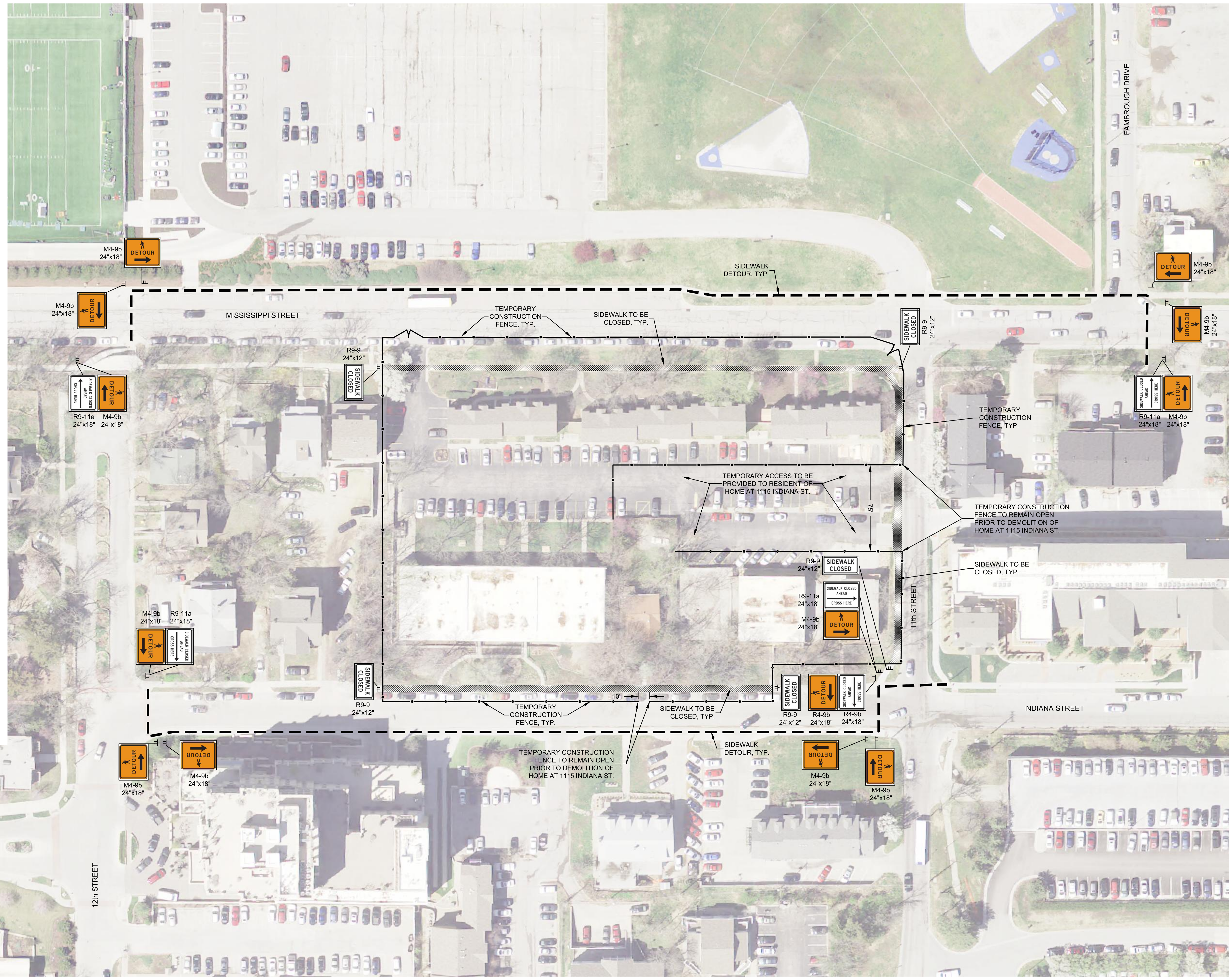
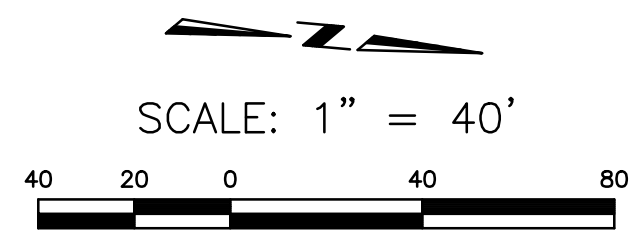


NOTES:

1. THE RESIDENT OF THE HOME AT 1115 INDIANA STREET IS TO BE PROVIDED SAFE VEHICULAR ACCESS BETWEEN THE HOME AND 11th STREET UNTIL MOVE-OUT, AS SHOWN.
2. THE RESIDENT OF THE HOME AT 1115 INDIANA STREET IS TO BE PROVIDED PEDESTRIAN ACCESS BETWEEN THE HOME AND INDIANA STREET UNTIL MOVE-OUT, AS SHOWN.
3. EXISTING UTILITY SERVICES AND MAIL DELIVERY TO THE HOME AT 1115 INDIANA STREET SHALL BE MAINTAINED UNTIL MOVE-OUT.
4. TRAFFIC CONTROL SIGNAGE SHOWN HEREUPON PERTAINS ONLY TO THE CLOSURE OF PUBLIC SIDEWALKS AND DOES NOT CONTEMPLATE CONSTRUCTION ACTIVITY IN THE TRAVEL LANES OF MISSISSIPPI, INDIANA AND 11th STREETS; REFER TO PUBLIC IMPROVEMENT PLANS (PW1417) FOR PHASED TRAFFIC CONTROL PLAN ASSOCIATED WITH STREET AND UTILITY IMPROVEMENTS.
5. BUS STOP LOCATED AT THE SW CORNER OF 11th AND INDIANA STREETS TO REMAIN OPEN DURING THE ENTIRETY OF THE PROJECT



© Landplan Engineering, P.A. 2014. This drawing is copyrighted by Landplan Engineering, P.A. This drawing may not be photographed, traced, or copied in any manner without the written permission of Landplan Engineering, P.A.

**1101 INDIANA STREET
 LAWRENCE, KANSAS 66044
 HERE @ KANSAS
 PEDESTRIAN DETOUR PLAN**

REV	DATE	DESCRIPTION
1	12/30/14	PER CITY COMMENTS

FOR COORDINATION PURPOSES ONLY

NOT FOR CONSTRUCTION

DATE: 12/19/14
 PROJECT NO.: 20132015
 DESIGNED BY: LPE
 DRAWN BY: BS
 CHECKED BY: CMS