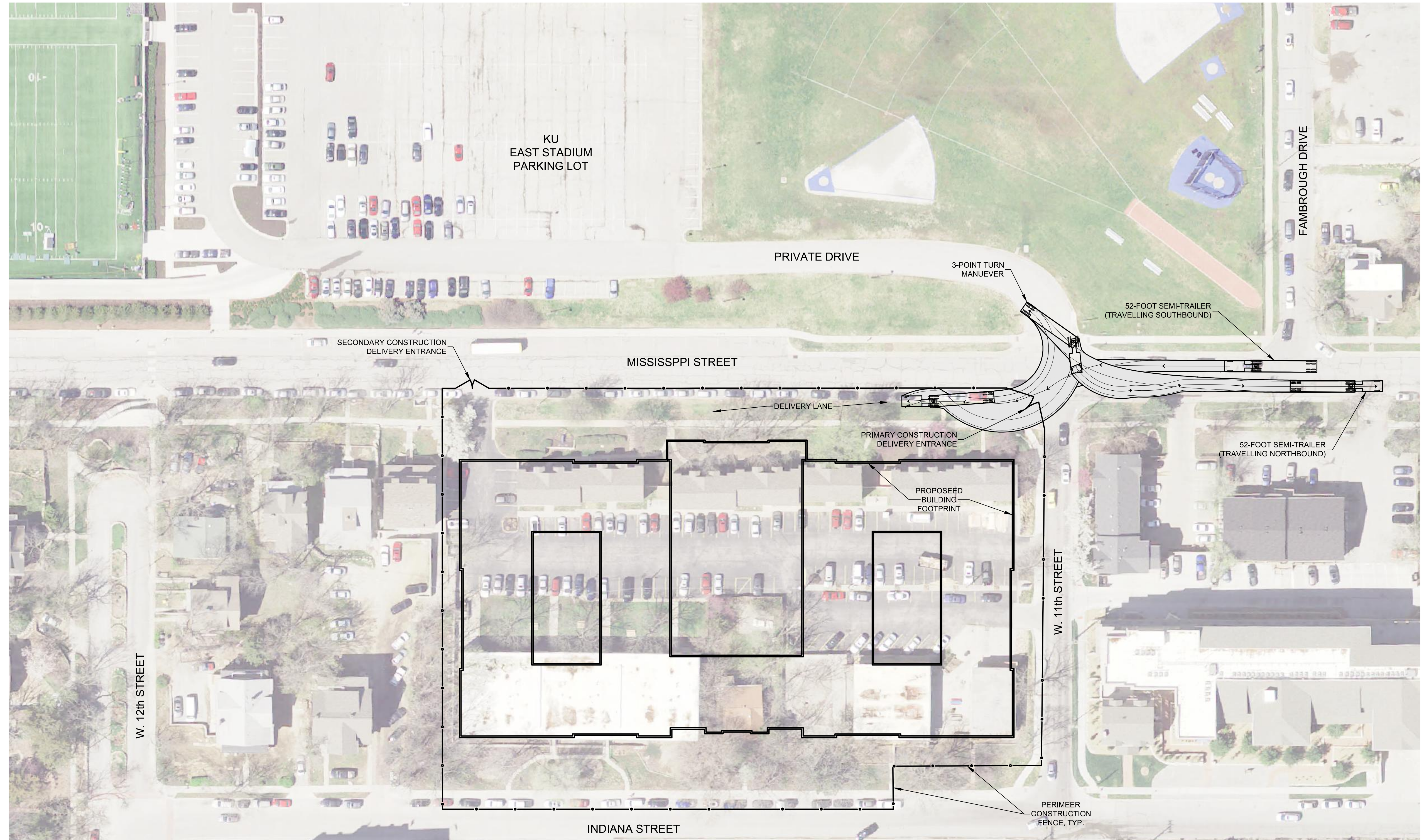
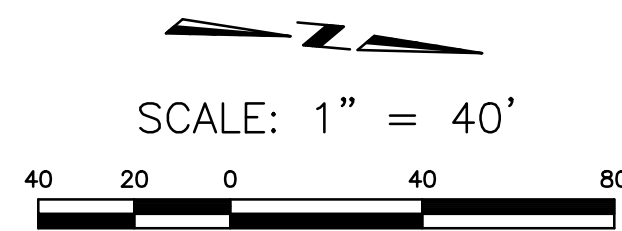


FILE NAME: R:\2013\2015\CAD\Concept-Exhibits\CONST LAYDOWN PLAN.dwg LAST SAVED BY: Brian Sturm SAVED DATE: 12/30/2014 2:51 PM PLOTTED: 12/30/2014 3:26 PM

NOTES:

1. ALL HEAVY CONSTRUCTION VEHICLES AND EQUIPMENT SHALL APPROACH AND LEAVE THE PROJECT SITE VIA MISSISSIPPI STREET.
2. NO HEAVY CONSTRUCTION VEHICLES AND EQUIPMENT SHALL TRAVEL ON MISSISSIPPI STREET SOUTH OF THE PROJECT SITE.



LANDPLAN ENGINEERING P.A.
 Lawrence, KS • Kansas City, MO • The Woodlands, TX
 1310 Wakarusa Drive, Suite 100
 Lawrence, Kansas 66049
 785.843.7530(p) | 785.843.2410(f)
 info@landplan-pa.com | www.landplan-pa.com

©Landplan Engineering, P.A. 2014. This drawing is copyrighted by Landplan Engineering, P.A. This drawing may not be photocopied, traced, or copied in any manner without the written permission of Landplan Engineering, P.A.

**1111 INDIANA STREET
 LAWRENCE, KANSAS 66044
 HERE @ KANSAS
 AUTO TURN ANALYSIS**

REV	DATE	DESCRIPTION

**FOR
 COORDINATION
 PURPOSES ONLY**

**NOT FOR
 CONSTRUCTION**

DATE: 12/30/14
 PROJECT NO.: 20132015
 DESIGNED BY: LPE/SC
 DRAWN BY: BS
 CHECKED BY: BS

ISSUE SHEET NO.
2
 OF 2 SHEETS