

3 GENERAL NOTES

- 9'-0" 2x6 HALLS TYPICAL ON FIRST LEVEL
 - 8'-0" 2x6 HALLS SECOND LEVEL
 - CONTINUOUS 1/8" OSB WALL SHEATHING
 - FLOOR JOISTS, 18" T.I.L., JOISTS @ 16" O.C.
 - HOUSE WRAP
 - FLASH ABOVE WINDOWS AND DOORS
 - HOLD FIRST LEVEL WINDOWS 18" FROM CEILING
 - BLOCK OUT WALL BEHIND UPSTAIRS STOOLS
 - 30" W x 36" H - 12" DOWN FROM CEILING FOR LINEN CAB.
 - BLOCK OUT 14 1/2" x 24" FLD. CAB. ADJ. TO BATH VANITY
 - FIRST FLOOR SOFFIT 16" DOWN
 - 12" STAIR TREADS, TYP. 1/4" NOSINGS
- ALL EXTERIOR WALLS SHEATHED W/ CONTINUOUS 1/8" OSB SHEATHING PROVIDES BRACED HALL LINES PER R602.10.4, CONTINUOUS SHEATHING CONNECTION PER TABLE R602.10.4.1, W/ 6d COTTON NAILS AT 6" SPACING (PANEL EDGES) AND AT 12" SPACING (INTERMEDIATE SUPPORTS) OR 16ga x 1-3/4" STAPLES AT 3" SPACING (PANEL EDGES) AND 6" SPACING (INTERMEDIATE SUPPORTS). FULL-HEIGHT BRACED HALL PANELS PROVIDED AT EACH END OF BRACED HALL LINES EXCEED REQUIRED LENGTH PER TABLE R602.10.4.2.

920 MISSOURI STREET
LAWRENCE, KS

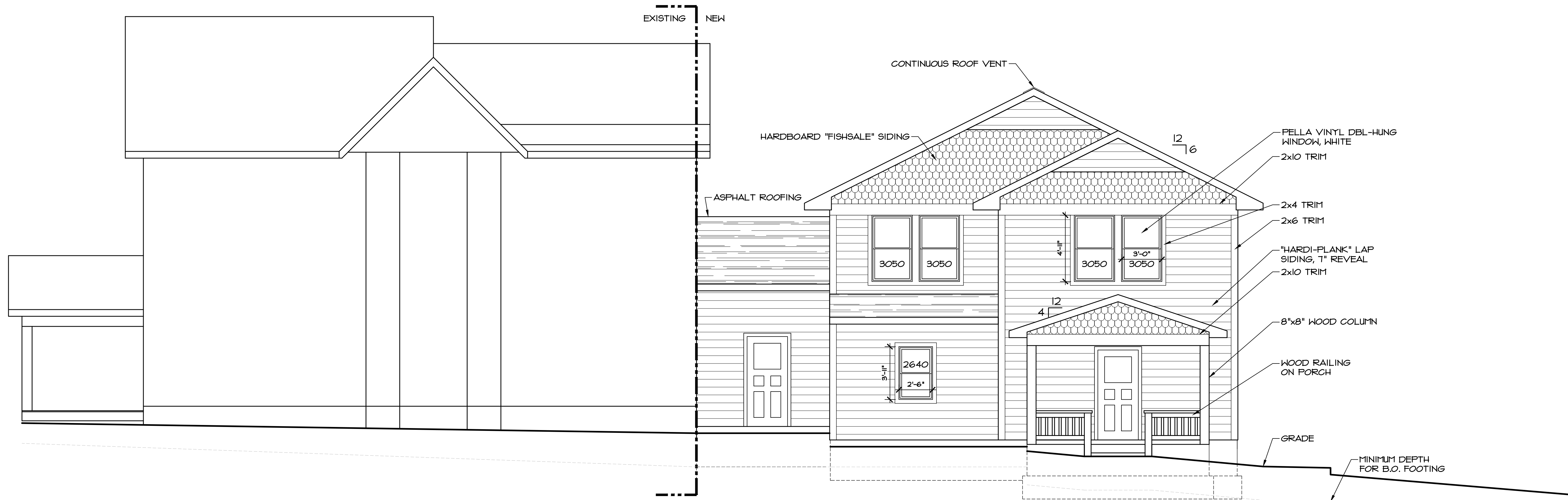
Hernly ASSOCIATES

920 Massachusetts
Lawrence, Kansas
66044
785 - 749 - 5806
FAX 785 - 749 - 1515

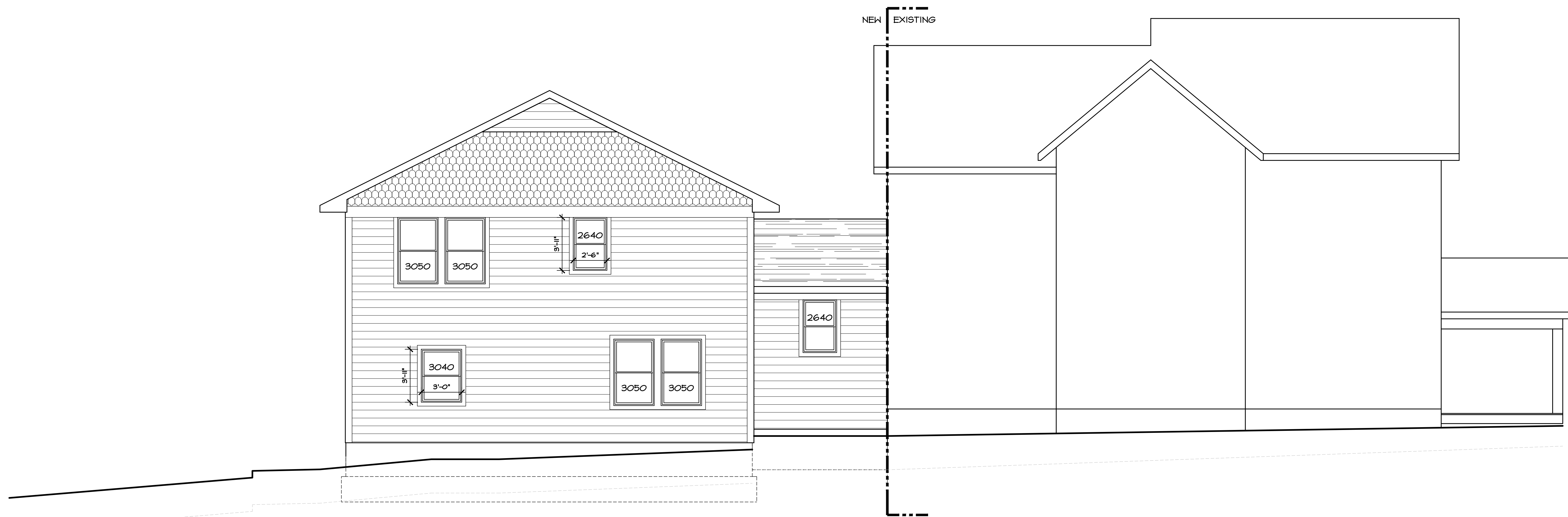
FLOOR PLANS
GARAGE ELEVATIONS

Date: 11/21/14
Drawn by: JRUBIO
Checked by: SHERNLY
Revisions:

A1.0



1 SOUTH ELEVATION
1/4" = 1'



2 NORTH ELEVATION
1/4" = 1'

920 MISSOURI STREET
LAWRENCE, KS

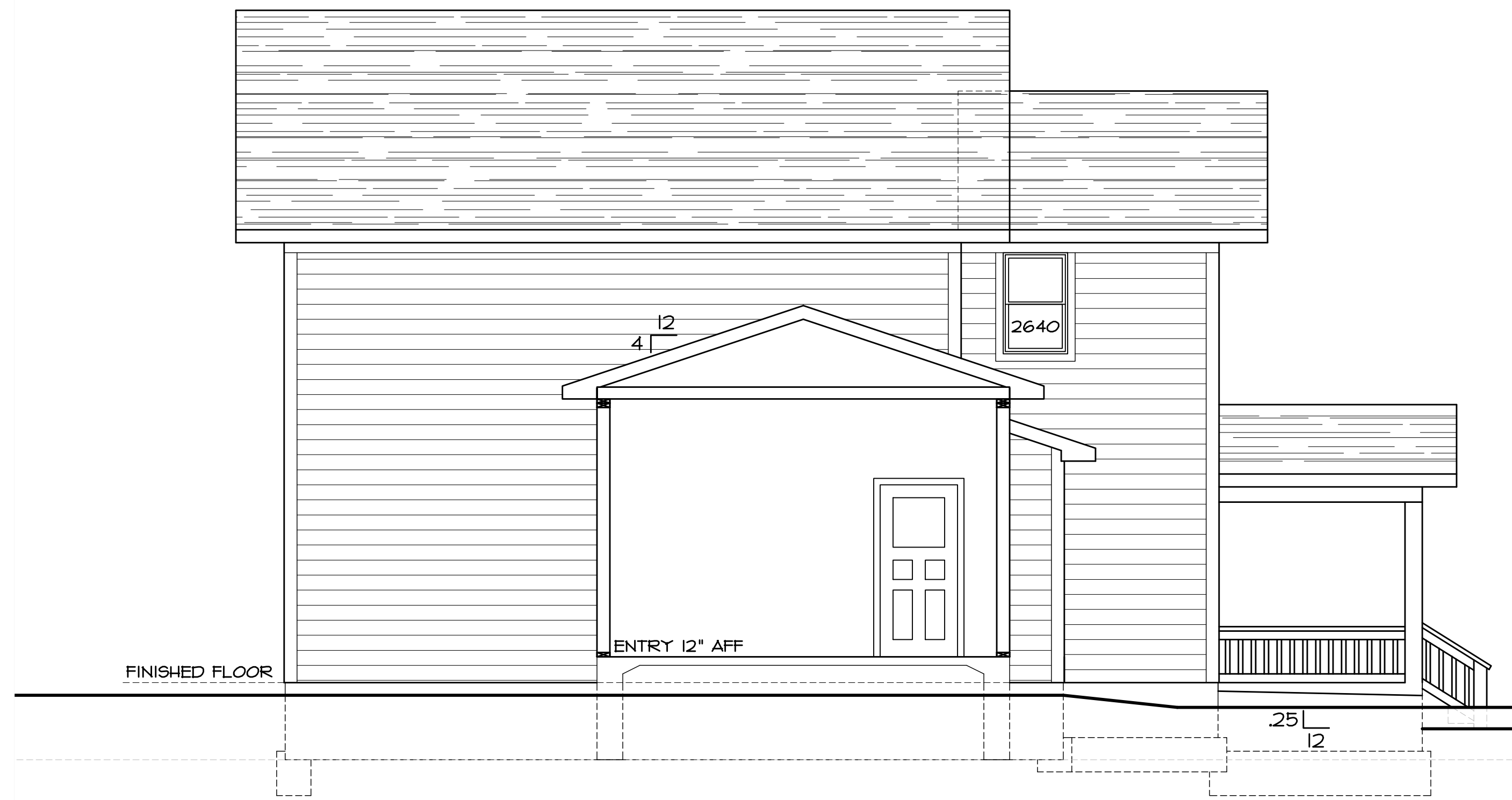
Hernly
ASSOCIATES

920 Massachusetts
Lawrence, Kansas
66044
785 - 749 - 5806
FAX 785 - 749 - 1515

ELEVATIONS

Date: 11/21/14
Drawn by: JRUBIO
Checked by: SHERNLY
Revisions:

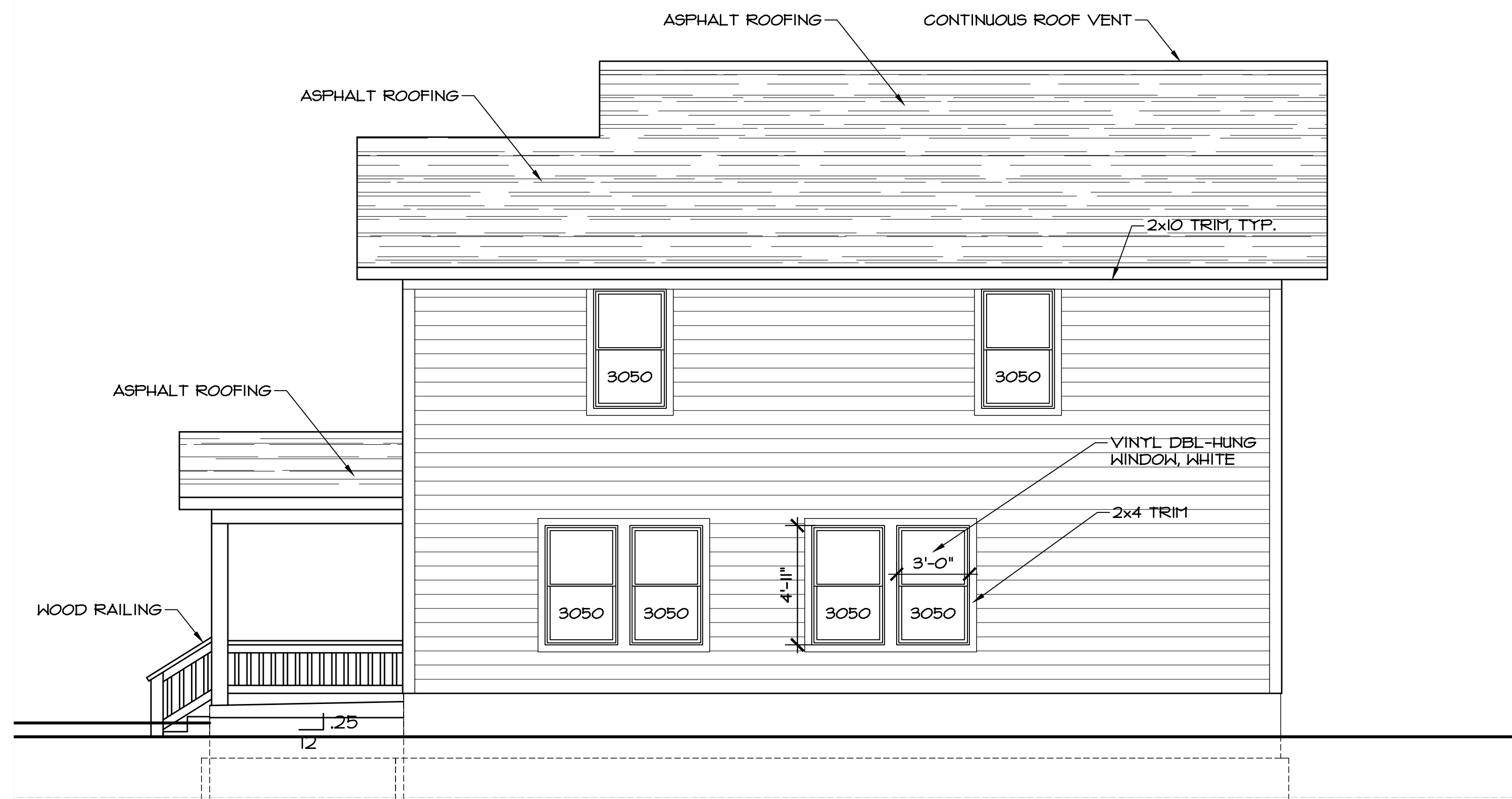
A2.0



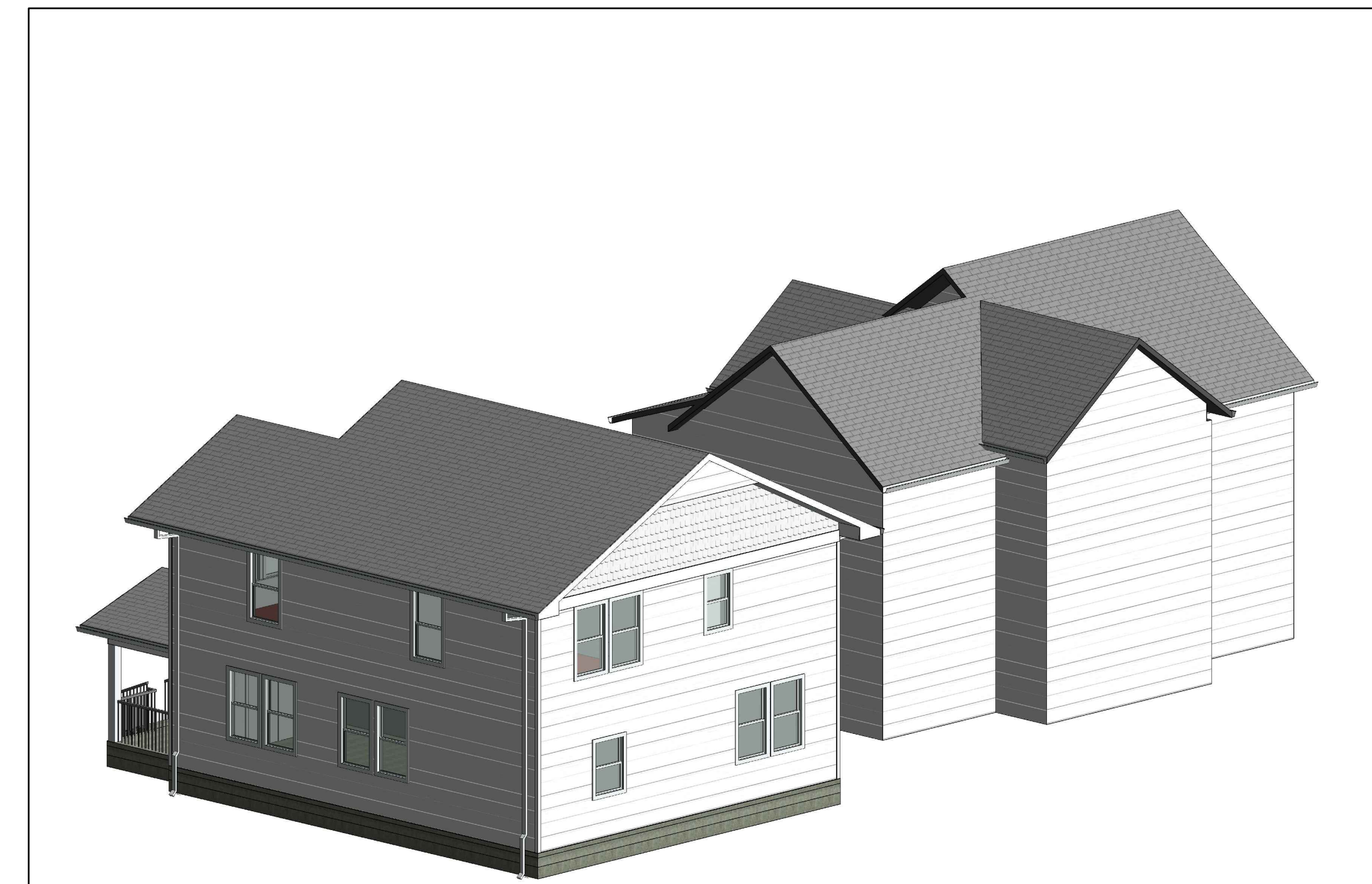
1 WEST ELEVATION
1/4" = 1'



2 FRONT VIEW



3 EAST ELEVATION
1/4" = 1'



4 REAR VIEW

920 MISSOURI STREET
LAWRENCE, KS

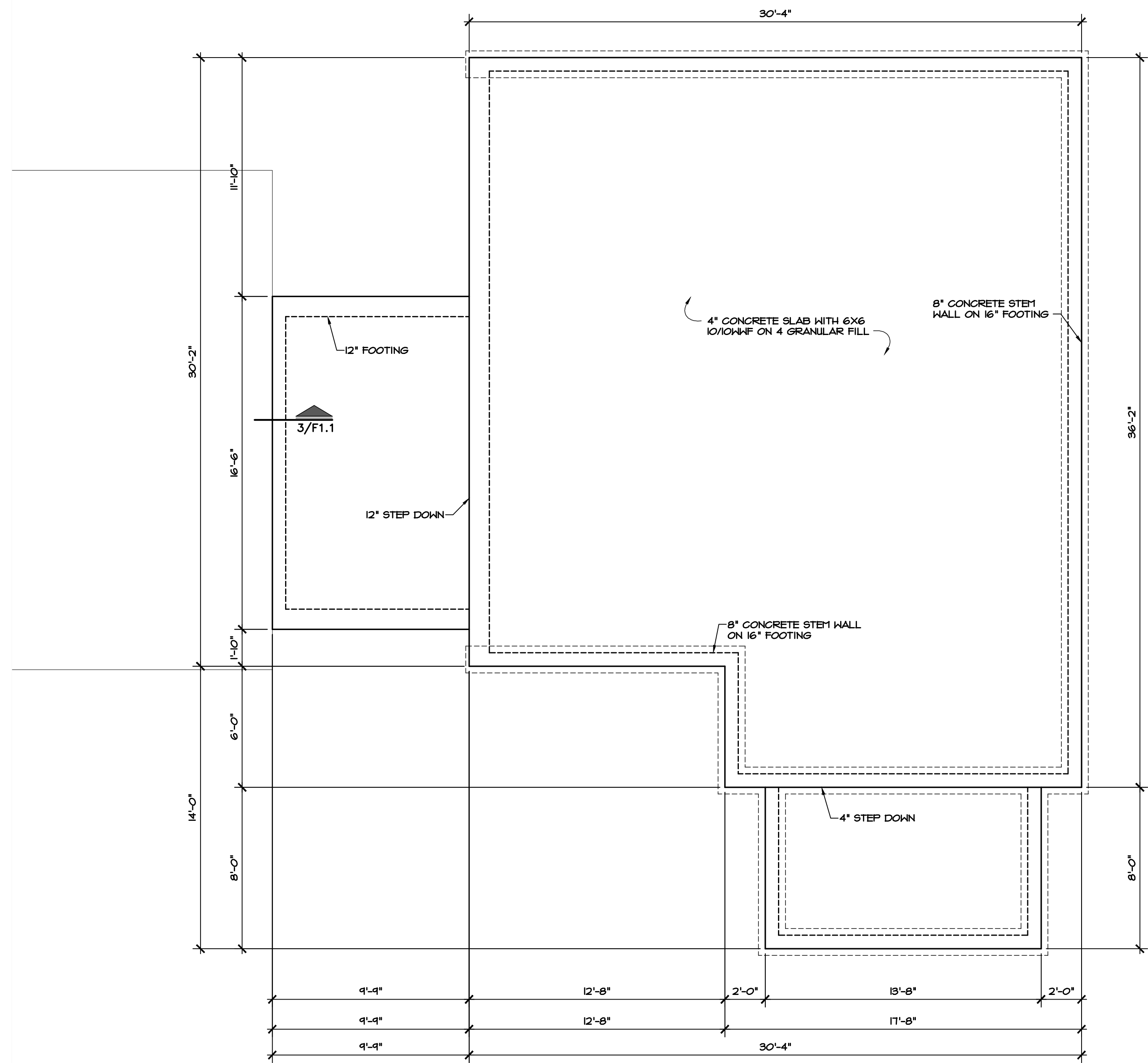
Hernly
ASSOCIATES

920 Massachusetts
Lawrence, Kansas
66044
785 - 749 - 5806
FAX 785 - 749 - 1515

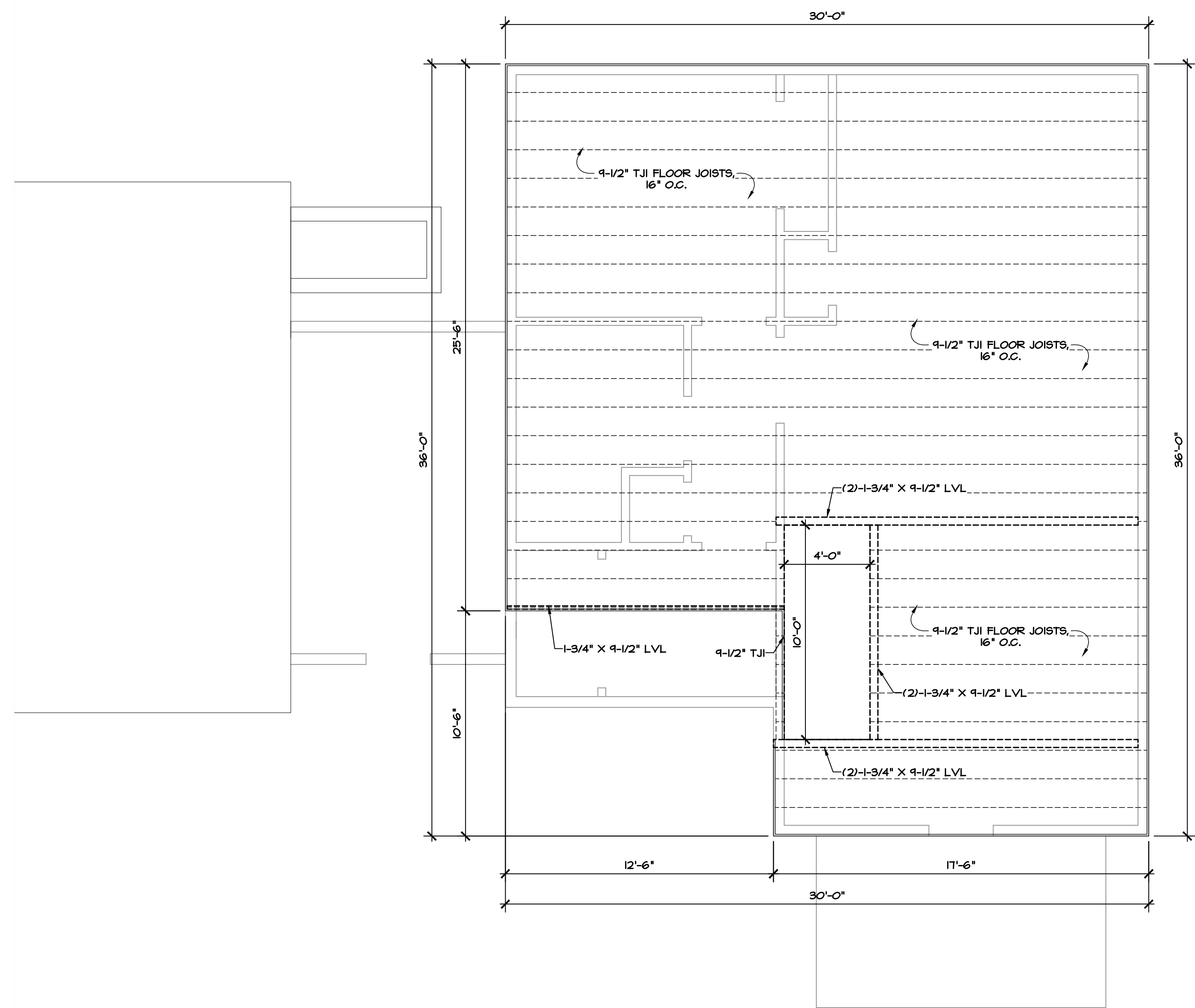
ELEVATIONS

Date: 11/21/14
Drawn by: JRUBIO
Checked by: SHERNLY
Revisions:

A2.1



1 FOUNDATION PLAN
1/4" = 1'



2 SECOND FLOOR STRUCTURAL PLAN
1/4" = 1'

920 MISSOURI STREET
LAWRENCE, KS

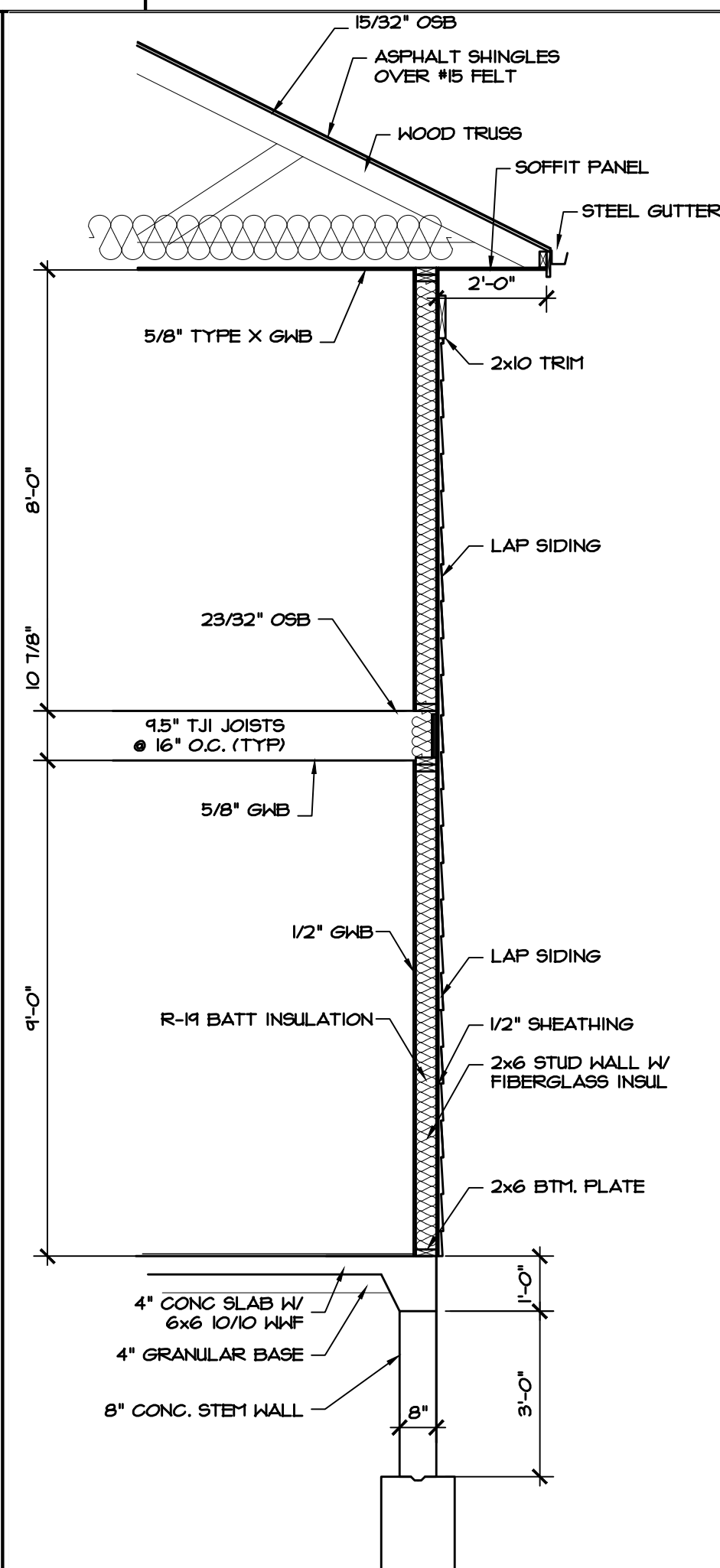
Hernly
ASSOCIATES

920 Massachusetts
Lawrence, Kansas
66044
785 - 749 - 5806
FAX 785 - 749 - 1515

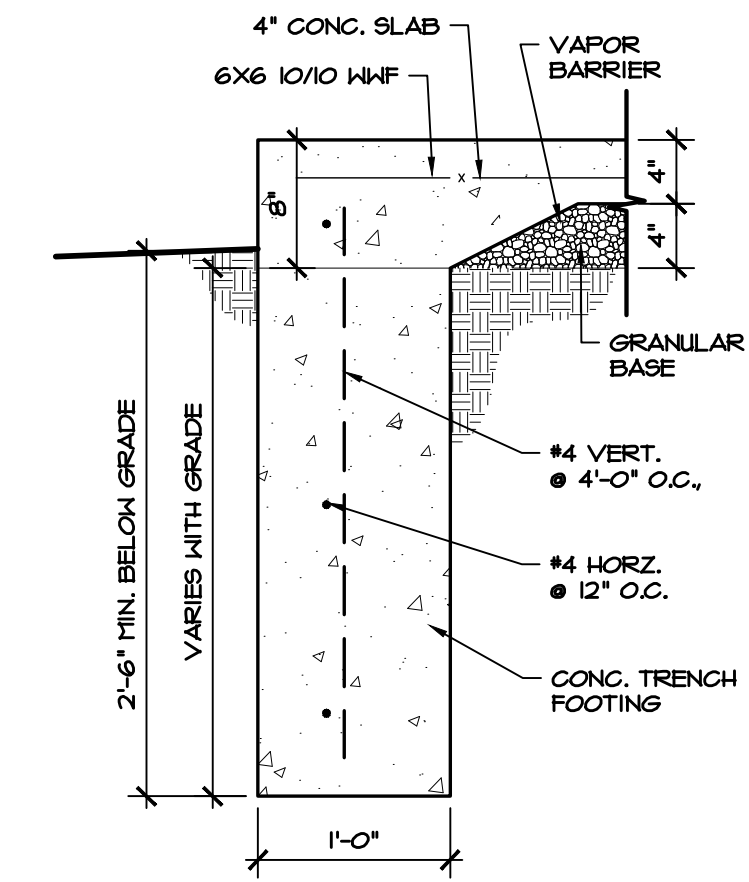
FOUNDATION PLAN
DETAILS
STRUCTURAL PLAN

Date: 11/21/14
Drawn by: JRUBIO
Checked by: SHERNLY
Revisions:

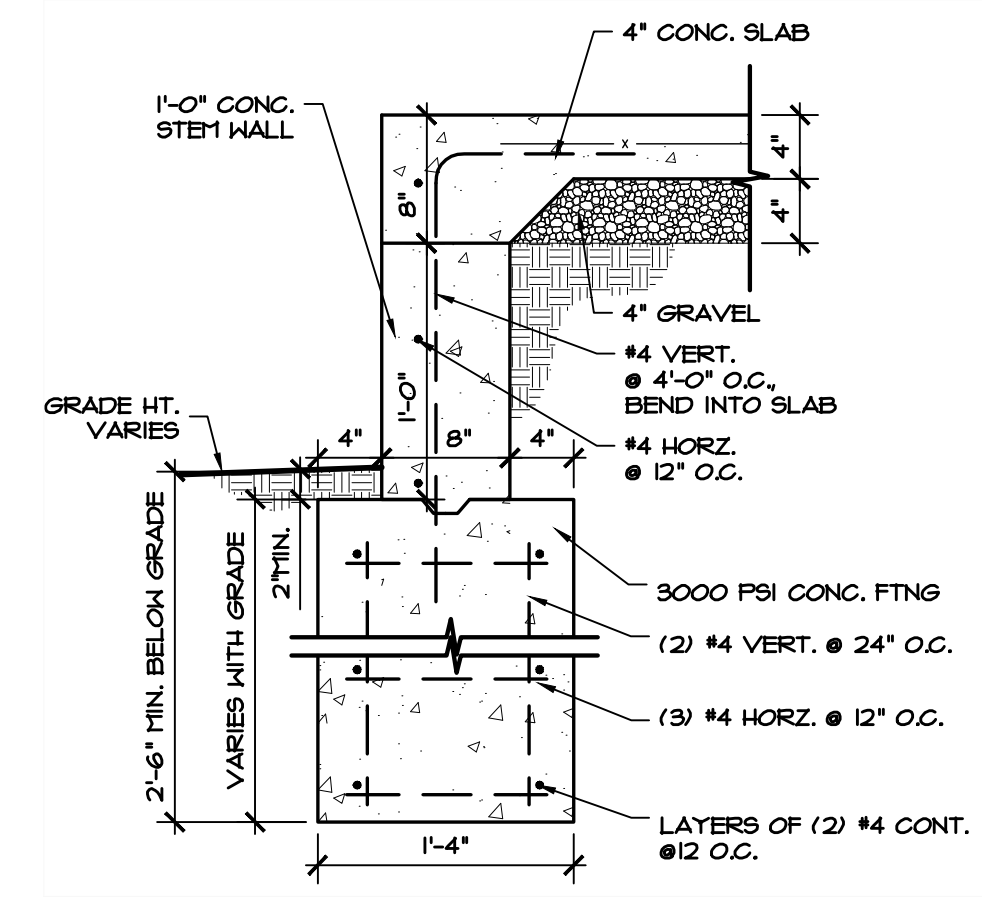
F1.0



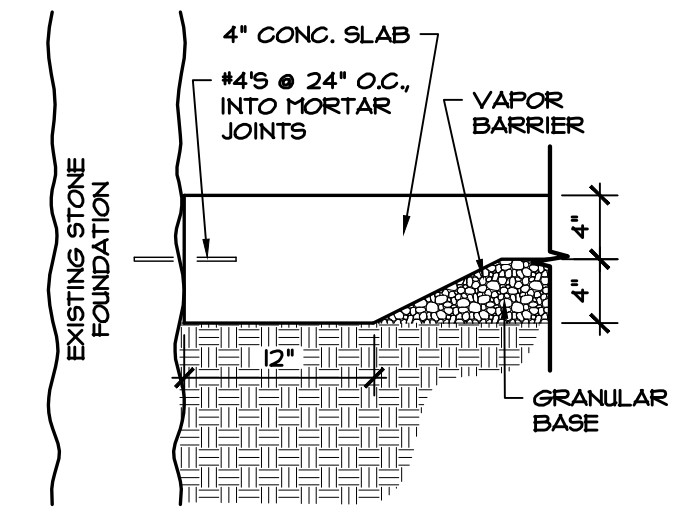
1 WALL SECTION
3/8" = 1'



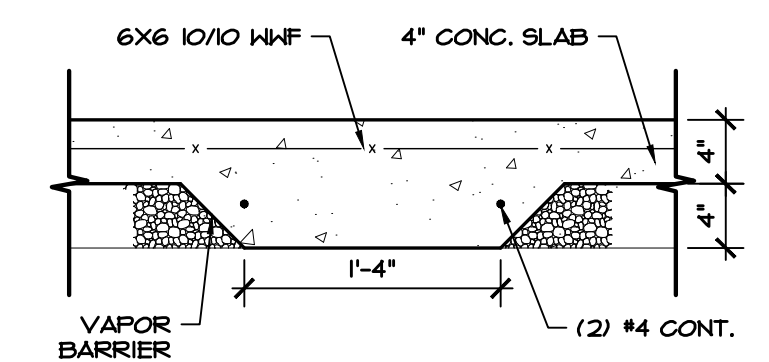
2 FND DETAIL
1" = 1'



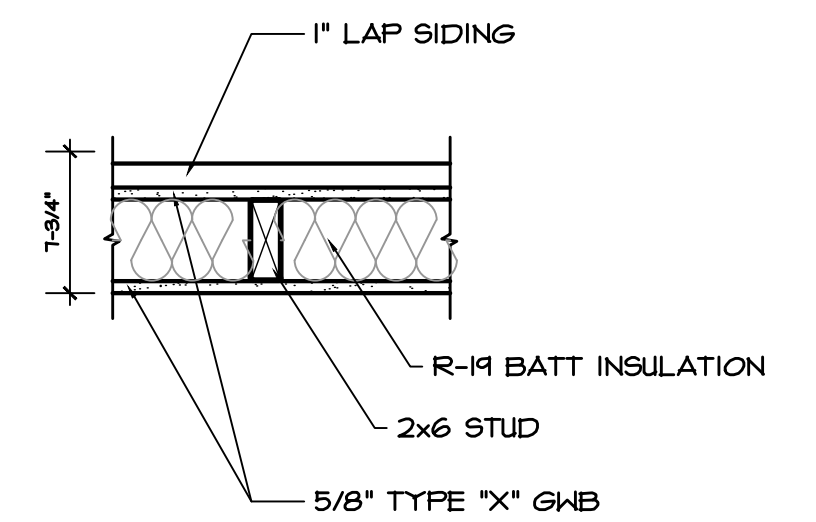
4 FND DETAIL
1" = 1'



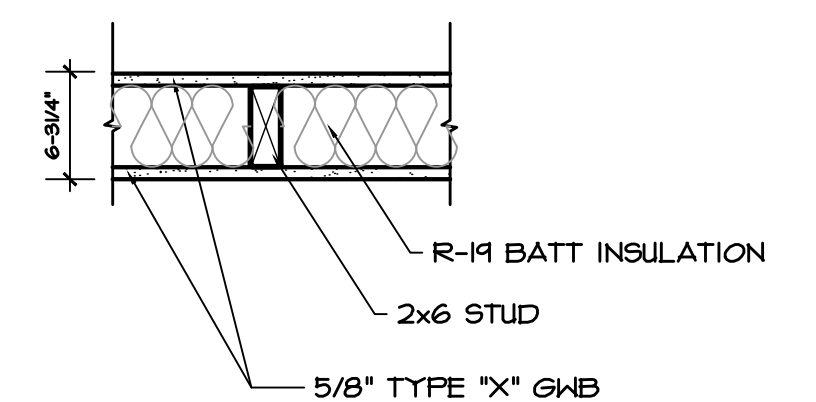
3 FND DETAIL
1" = 1'



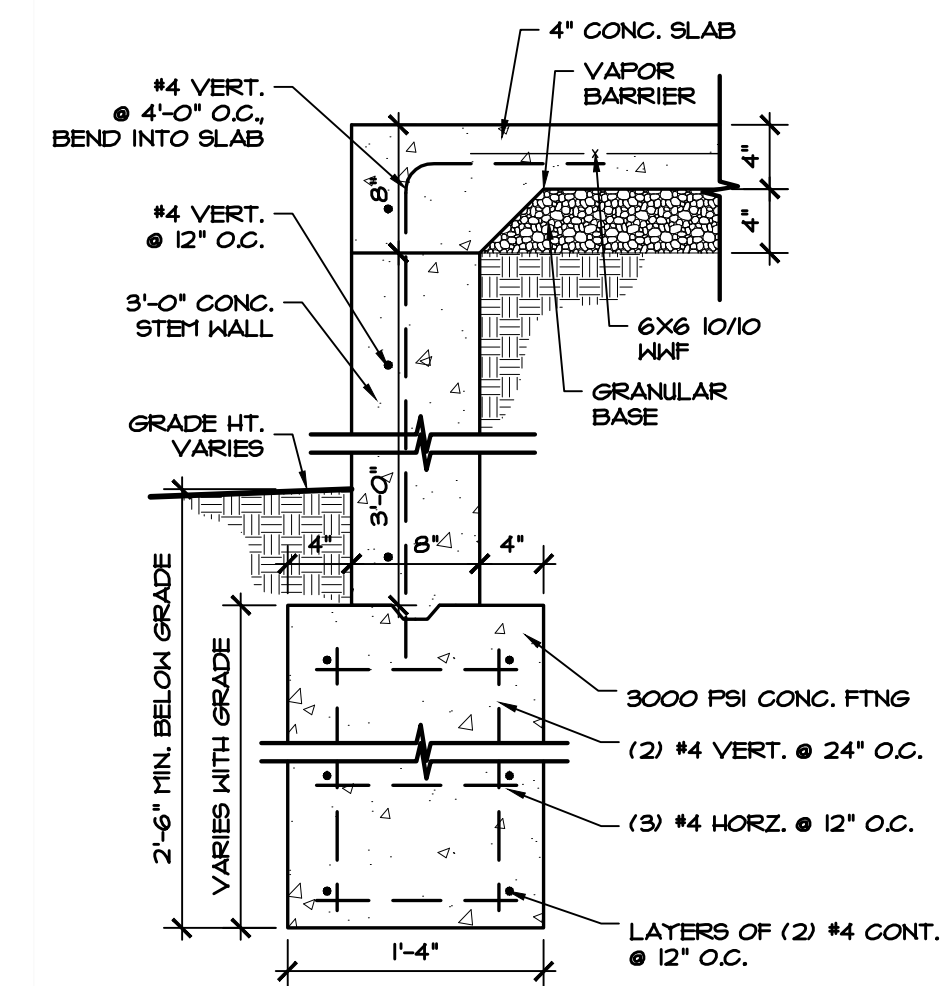
5 FND DETAIL
1" = 1'



EXTERIOR WALL



INTERIOR ENTRY WALL



6 FND DETAIL
1" = 1'

GA FILE NO. WP 3510
CONSTRUCTION TYPE:
GYPSUM WALLBOARD, WOOD STUDS
ONE LAYER 5/8" TYPE X GYPSUM WALLBOARD
APPLIED PARALLEL WITH OR AT RIGHT ANGLES TO
EACH SIDE OF 2x6 WOOD STUDS SPACED 16" O.C.
WITH 6d COATED NAILS 1-7/8" LONG, 0.0915"
SHANK, 1/4" HEADS, 1" O.C.
WALLBOARD NAILED TO TOP AND BOTTOM PLATES
@ 1" O.C. STAGGER JOINTS EA. SIDE.

7 1HR RATED FIRE

920 MISSOURI STREET
LAWRENCE, KS

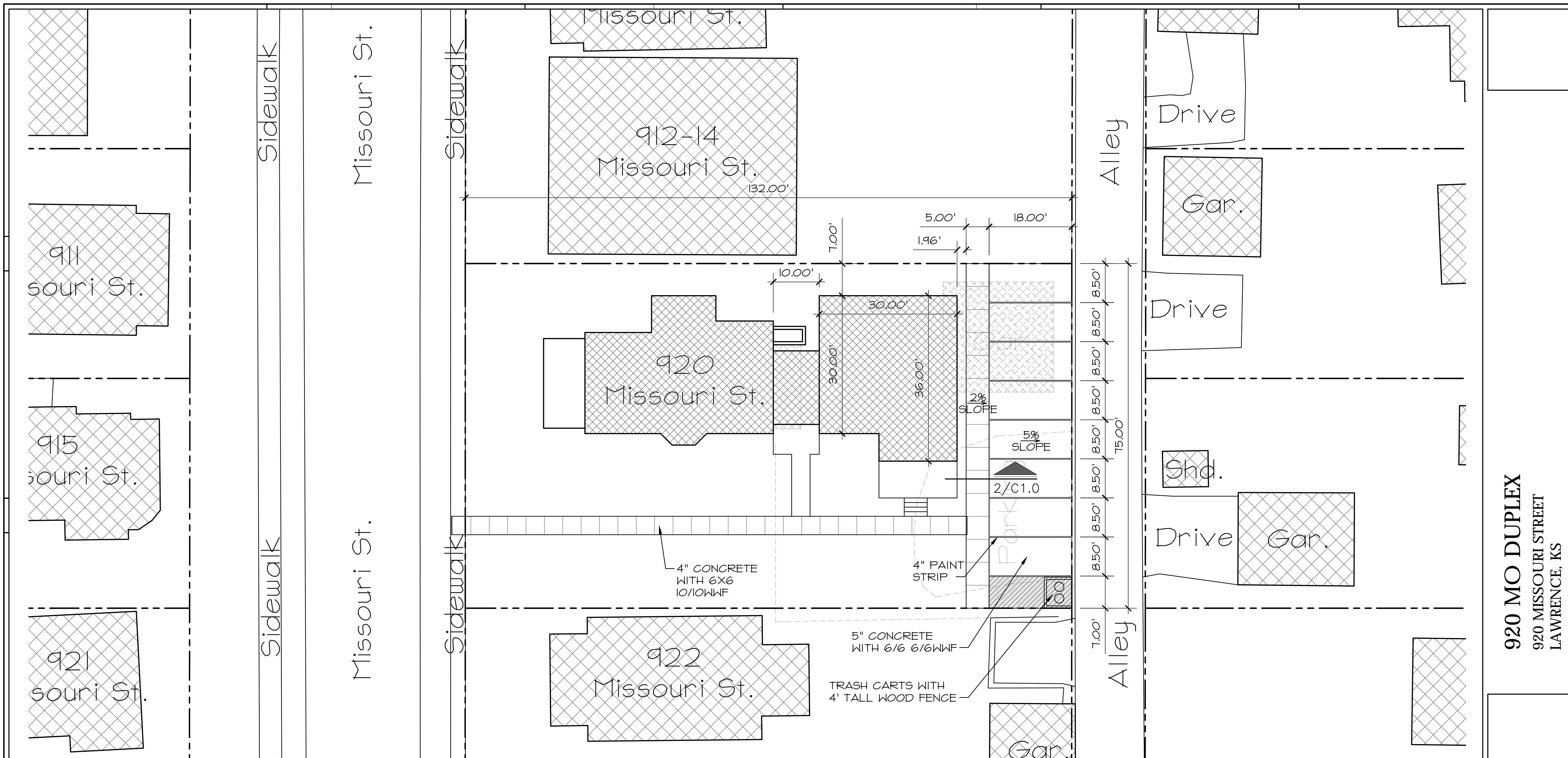
Hernly
ASSOCIATES

920 Massachusetts
Lawrence, Kansas
66044
785 - 749 - 5806
FAX 785 - 749 - 1515

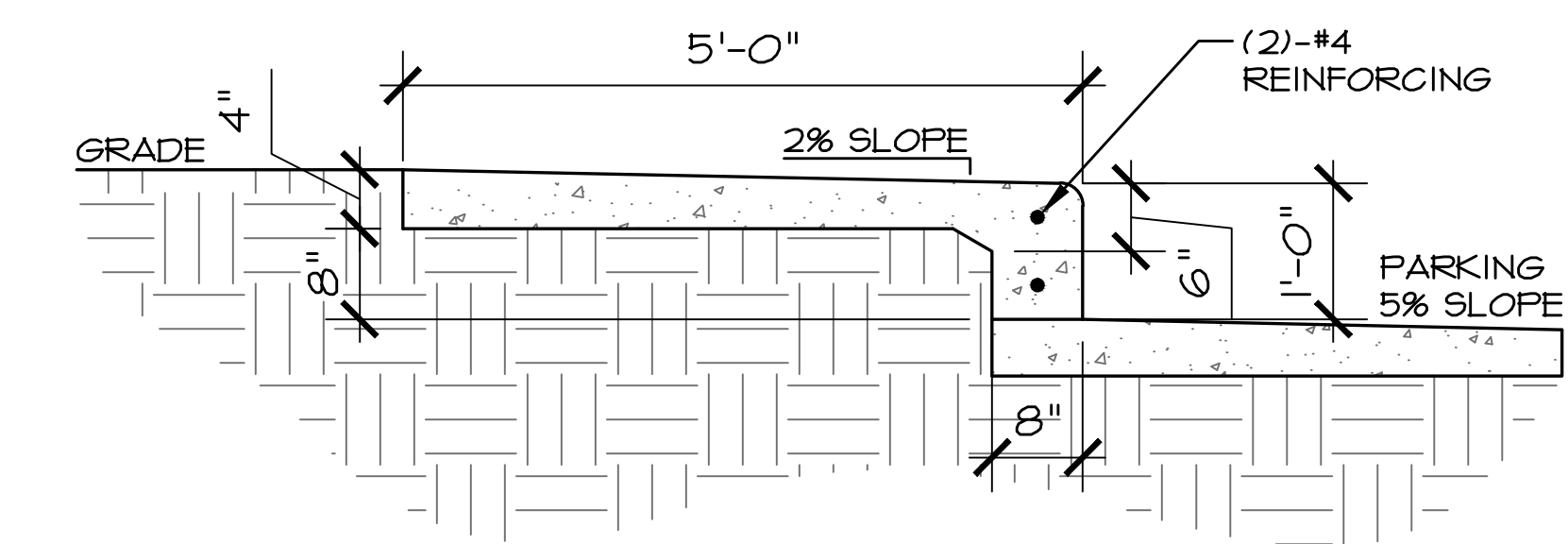
FOUNDATION PLAN
DETAILS
STRUCTURAL PLAN

Date: 11/21/14
Drawn by: JRUBIO
Checked by: SHERNLY
Revisions:

F1.1



1 SITE PLAN
1" = 10'-0"



2 SIDEWALK AT CURB SECTION
3/4" = 1'-0"

920 MO DUPLEX
920 MISSOURI STREET
LAWRENCE, KS

Hernly ASSOCIATES

920 Massachusetts
Lawrence, Kansas
66044
785 - 749 - 5806
FAX 785 - 749 - 1515

DRAWINGS

Date: _____ DATE
Drawn by: _____
Checked by: _____
Revisions: _____

C1.0