

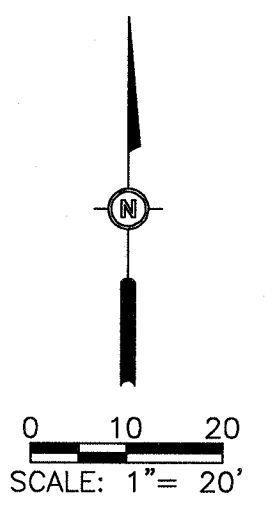
LAYOUT NOTES:

1. ALL UTILITY INFORMATION SHOWN HEREIN IS BASED ON THE INFORMATION AVAILABLE TO THE DESIGN PROFESSIONAL AT THE TIME OF DESIGN. THE CONTRACTOR SHALL BE RESPONSIBLE FOR VERIFYING ALL UTILITY DEPTHS AND LOCATIONS PRIOR TO CONSTRUCTION. ANY DAMAGE TO UTILITIES AND INCIDENTAL DAMAGE CAUSED BY THE CONTRACTOR'S CONSTRUCTION OPERATIONS SHALL BE REPAIRED AT THE CONTRACTOR'S EXPENSE.
2. THE CONTRACTOR SHALL FIELD VERIFY ALL DIMENSIONS AND QUANTITIES AND RECORD "AS-BUILT" DIMENSIONS OR LOCATIONS OF ANY APPURTENANCES IF THEY DIFFER FROM THE PLANS.
3. ALL HANDICAPPED SITE FEATURES SHALL BE CONSTRUCTED TO MEET ALL STATE, LOCAL, AND ADA SPECIFICATIONS AS CURRENTLY IN EFFECT.
4. CONTACT AFFECTED OWNER(S) A MINIMUM OF 24 HOURS PRIOR TO HALTING OF UTILITY SERVICES. UNDER NO CIRCUMSTANCE SHALL ANY UTILITY SERVICE BE DISCONTINUED FOR MORE THAN ONE (1) 12-HOUR PERIOD.
5. ALL DISTURBED OFFSITE CONDITIONS SHALL BE REPLACED TO THEIR PREVIOUS CONDITION(S). ANY DAMAGE TO OR REMOVAL OF EXISTING CONDITIONS OCCURRING UPON ADJACENT PROPERTY DURING CONSTRUCTION SHALL BE REPAIRED OR REPLACED TO THEIR PREVIOUS CONDITION(S).
6. CARE SHALL BE EXERCISED BY THE CONTRACTOR TO PRESERVE AND/OR PROTECT ANY EXISTING VEGETATION OUTSIDE OF AREAS TO BE GRADED. THE PERSON(S) WHO DAMAGES ANY OF THESE AREAS SHALL BE HELD RESPONSIBLE FOR ALL COSTS OF REPLACEMENT MATERIALS AND LABOR.
7. CONTRACTOR SHALL MAINTAIN POSITIVE DRAINAGE DURING CONSTRUCTION.
8. CONNECT WATER LINES WITH APPROPRIATE TEE JOINTS & VALVE BOXES PER CITY OF LAWRENCE STANDARDS. CONTACT THE CITY OF LAWRENCE WATER DEPARTMENT REPRESENTATIVE PRIOR TO ANY WATER LINE INSTALLATION.
9. ALL ROUTING AND INSTALLATION OF PROPOSED UTILITIES (TELEPHONE, GAS, WATER, ETC.) SHALL BE COORDINATED BETWEEN THE GENERAL CONTRACTOR AND THE APPROPRIATE UTILITY PROVIDER. ALL UTILITY ROUTING SHALL BE APPROVED BY THE OWNER/ARCHITECT AND THE APPROPRIATE UTILITY PROVIDER PRIOR TO INSTALLATION. ANY PROPOSED UTILITY ROUTING DESIGNATED ON THESE DOCUMENTS ARE FOR GENERAL GUIDELINES ONLY UNLESS OTHERWISE SPECIFIED. BARTLETT & WEST INC. ASSUMES NO LIABILITY FOR IMPROPER ROUTING OR CONNECTIONS TO EXISTING UTILITIES.
10. ALL METHODS AND MEANS OF CONSTRUCTION PERFORMED ON THIS PROJECT SHALL CONFORM TO THE DESIGN CRITERIA FOR THE CITY OF LAWRENCE, KS.
11. REFER TO ELECTRICAL ENGINEER'S PLANS FOR ALL LOCATIONS, TYPE, DESIGN AND DETAILS OF SITE LIGHTING AND ALL ELECTRICAL ROUTING USED THROUGHOUT THE PROJECT.

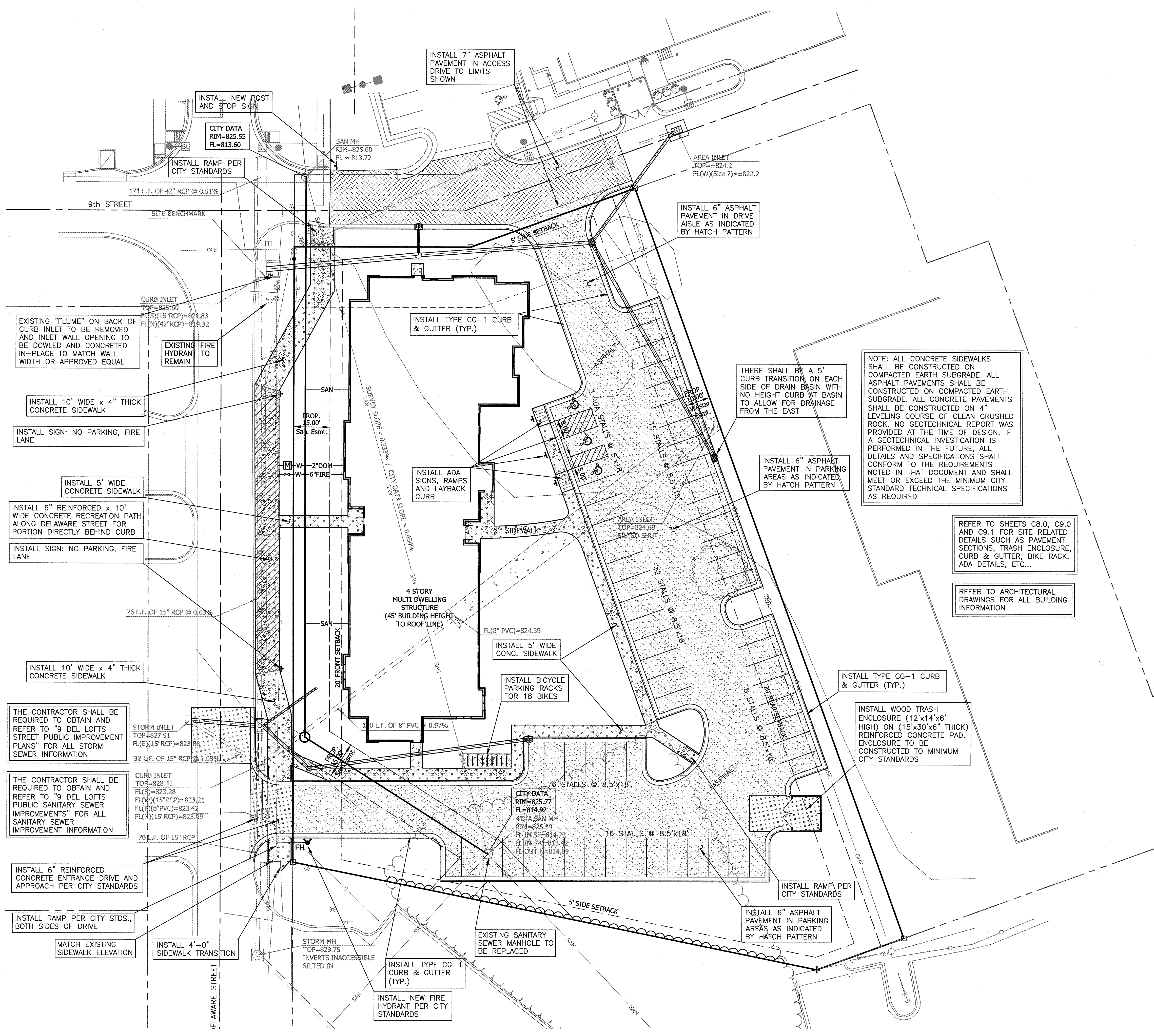
PAVEMENT SCHEDULE

	6" ASPHALT PAVEMENT
	7" ASPHALT PAVEMENT
	6" REINFORCED CONCRETE PAVEMENT
	4" CONCRETE SIDEWALK
	6" REINFORCED CONCRETE SIDEWALK

NOTE: NO GEOTECHNICAL REPORT WAS AVAILABLE TO THE DESIGN PROFESSIONAL AT THE TIME OF DESIGN AND PRIOR TO COMPLETION OF THESE DOCUMENTS. BARTLETT & WEST, INC. ASSUMES NO RESPONSIBILITY OR LIABILITY FOR ANY ITEMS ASSOCIATED WITH PAVEMENT THICKNESS, SUBGRADES, ETC. THAT HAVE NOT BEEN VERIFIED WITH A GEOTECHNICAL PROFESSIONAL OR APPROVED BY THE OWNER PRIOR TO INSTALLATION. IF A GEOTECHNICAL REPORT BECOMES AVAILABLE IN THE FUTURE, IT IS THE CONTRACTORS RESPONSIBILITY TO OBTAIN A COPY AND REVIEW/VERIFY/MODIFY THE INFORMATION NOTED AS REQUIRED.



LAYOUT PLAN



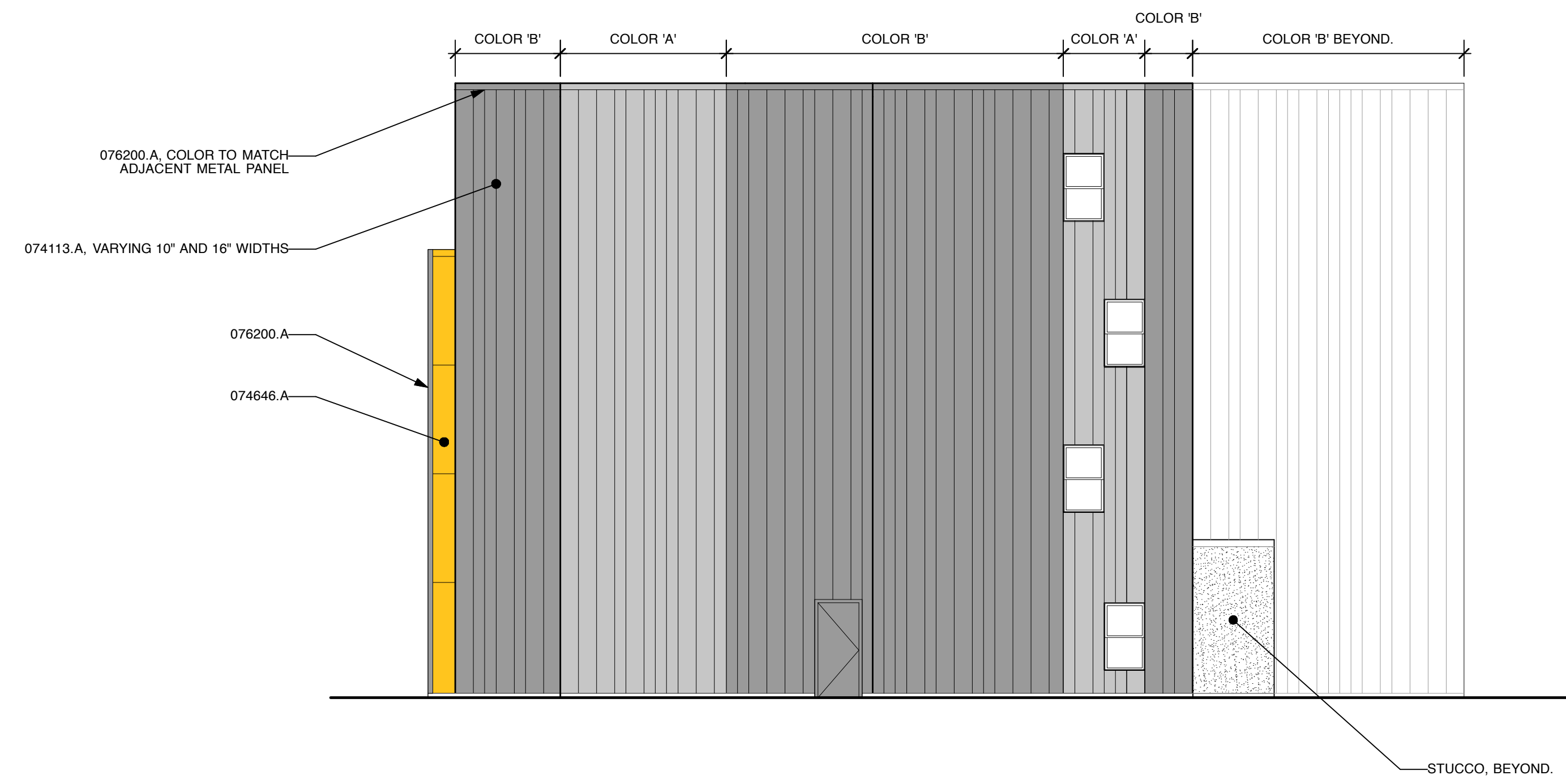
BARTLETT & WEST
 844 COLUMBIA DRIVE, LAWRENCE, KANSAS 66044
 PHONE 781.748.9591
 WWW.BARTLETTWEST.COM

CONSTRUCTION DOCUMENTS
9 DEL LOFTS
 900 DELAWARE STREET, CITY OF LAWRENCE
 DOUGLAS COUNTY, KANSAS

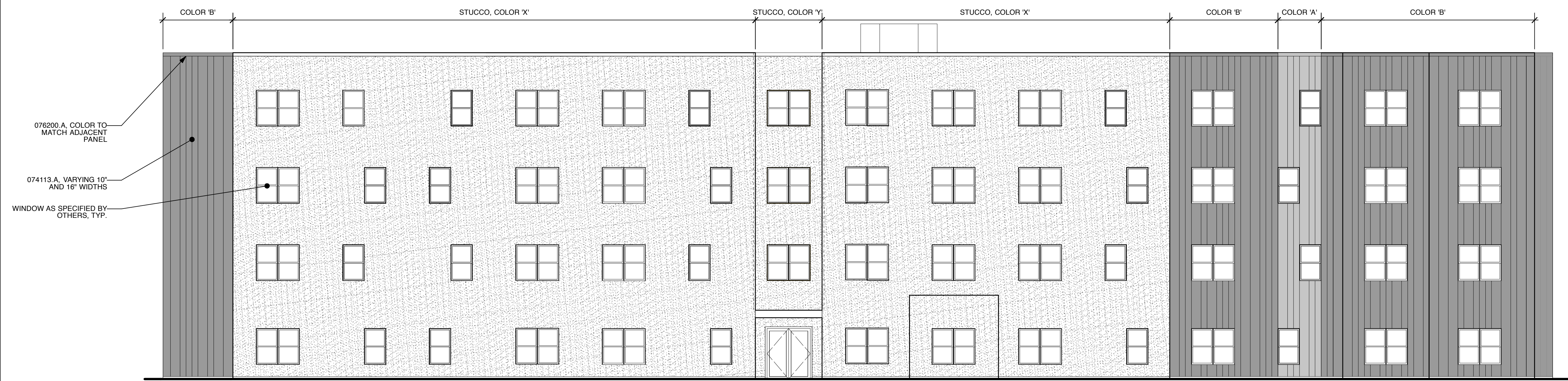
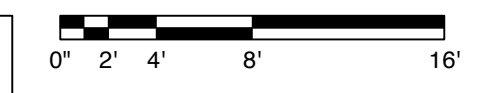
DESIGNED BY:	DRA
DRAWN BY:	RLW
APPROVED BY:	DRA
DESIGN PROJ:	
CONST PROJ:	14518.011
SCALE:	AS NOTED
DATE:	JANUARY 2014
DRAWING NO:	C3.0
SHEET NO:	3 of 12

Drawing Name: W:\Proj\14518.011\4518.011\AutoCAD\CD- 9 Del Lofts\4518.011 CD C3.0 Layout Plan.dwg Layout Name: Layout1 Printed By: RLW0576 Printed on: 1/10/2014 10:23:16 AM
 Last edit on: 01/07/10

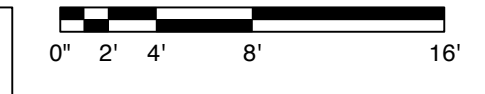
- NOTE:
SCOPES NOTE KEYNOTED IN THESE DRAWINGS ARE SPECIFIED BY OTHERS AND ARE SHOWN FOR COORDINATION PURPOSES ONLY.
- 055000 A STEEL SHAPE
 - 055000 B FASTENER
 - 071326 A SELF-ADHERING SHEET WATER PROOFING
 - 072500 A WEATHER BARRIER
 - 074113 A STANDING SEAM METAL PANEL
 - 074646 A FIBER CEMENT SIDING
 - 076200 A SHEET METAL FLASHING / TRIM
 - 079200 A JOINT SEALANTS
 - 079200 B BACKERROD
 - 265600 A EXTERIOR LIGHT FIXTURE



02 SOUTH ELEVATION
RE:



01 EAST ELEVATION
RE:



KEYNOTES

EXTERIOR ELEVATIONS

CONSULTANTS:

ISSUE PACKAGE: _____ DATE: _____
 PROGRESS SET / PRICING PACKAGE _____ 05.02.14

NAME _____
 ARCHITECT _____
 LICENSE NO. A-XXXX

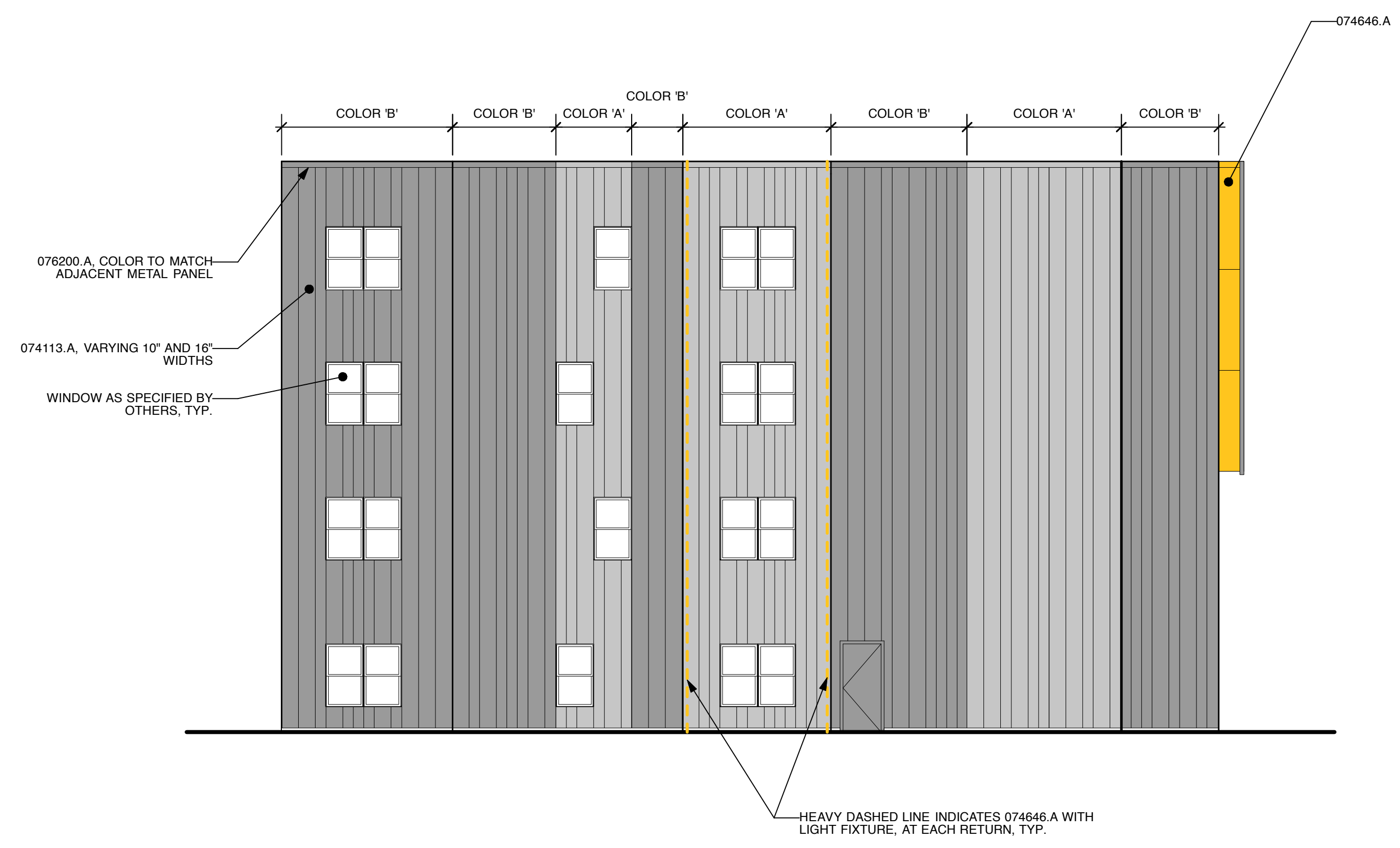
9 DEL HOUSING
 9TH AND DELAWARE, LAWRENCE, KANSAS
 PROJECT #1410
 DRAWN BY: SSL / BF
 CHECKED BY: JS



310 avenida cesar e chavez kansas city missouri 64108 p 816 474 3838 f 816 474 0836 www.eldoradoarchitects.com

A201
 PRELIMINARY: NOT FOR CONSTRUCTION

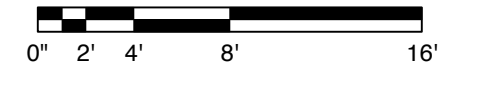
- NOTE:
SCOPES NOTE KEYNOTED IN THESE DRAWINGS ARE SPECIFIED BY OTHERS, AND ARE SHOWN FOR COORDINATION PURPOSES ONLY.
- 055000 A STEEL SHAPE
 - 055000 B FASTENER
 - 071326 A SELF-ADHERING SHEET WATER PROOFING
 - 072500 A WEATHER BARRIER
 - 074113 A STANDING SEAM METAL PANEL
 - 074646 A FIBER CEMENT SIDING
 - 076200 A SHEET METAL FLASHING / TRIM
 - 079200 A JOINT SEALANTS
 - 079200 B BACKERROD
 - 265600 A EXTERIOR LIGHT FIXTURE



02 NORTH ELEVATION
RE: ??/A???



01 WEST ELEVATION
RE: ??/A???



KEYNOTES

EXTERIOR ELEVATIONS

CONSULTANTS:

ISSUE PACKAGE: _____ DATE: _____
 PROGRESS SET / PRICING PACKAGE _____ 05.02.14

NAME _____
 ARCHITECT _____
 LICENSE NO. A-XXXX

9 DEL HOUSING
 9TH AND DELAWARE, LAWRENCE, KANSAS
 PROJECT #1410
 DRAWN BY: SSL / BF
 CHECKED BY: JS



510 avenida cesar e chavez, kansas city, missouri 64108 p 816 474 3838 f 816 474 0836 www.eldoradoarchitects.com

A200
 PRELIMINARY: NOT FOR CONSTRUCTION



