

**WESTAR ENERGY
FAIRGROUNDS SUBSTATION**

O'Connell Road

Venture Park Drive

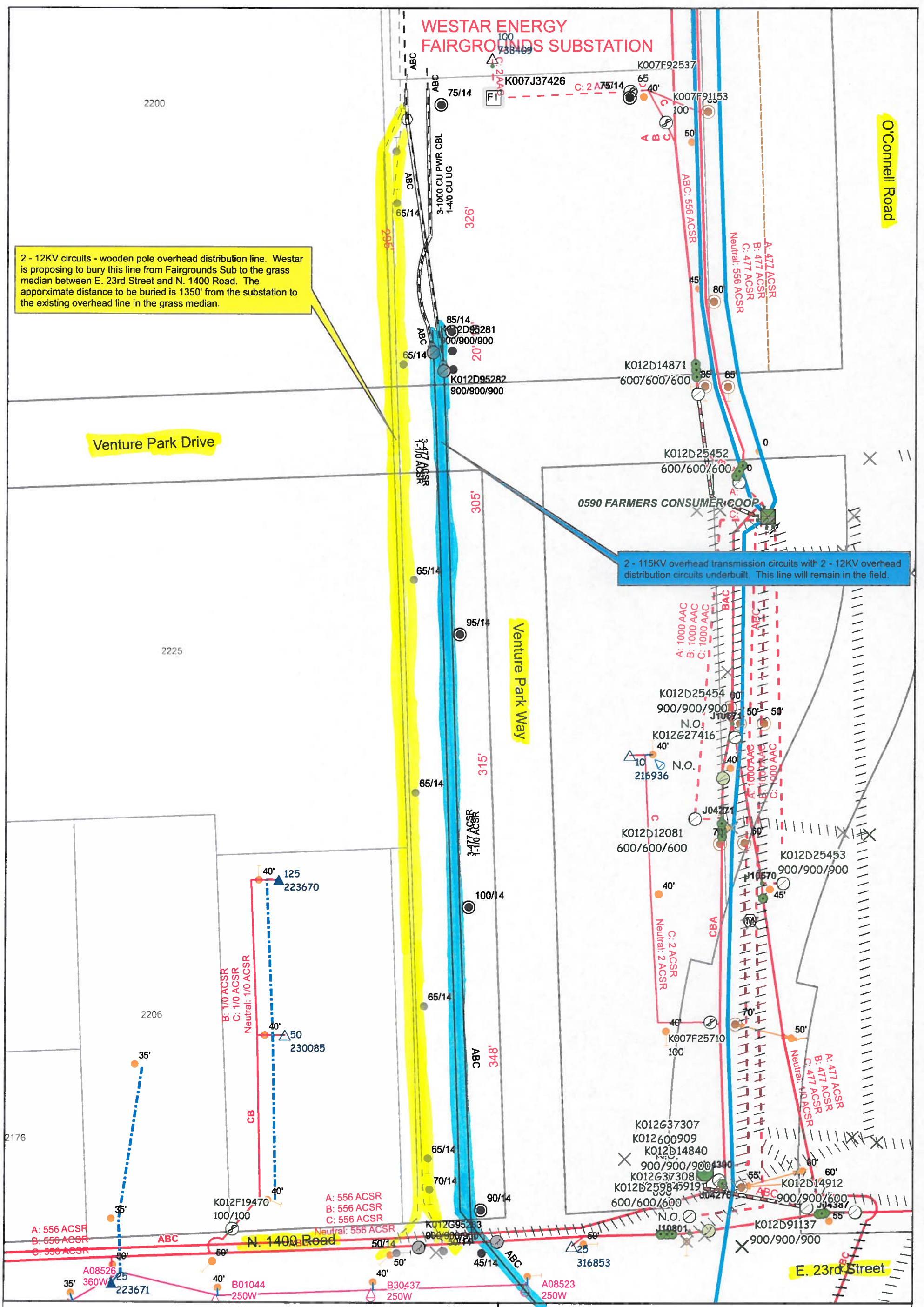
Venture Park Way

E. 23rd Street

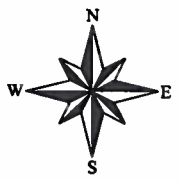
0590 FARMERS CONSUMER COOP

2 - 12KV circuits - wooden pole overhead distribution line. Westar is proposing to bury this line from Fairgrounds Sub to the grass median between E. 23rd Street and N. 1400 Road. The approximate distance to be buried is 1350' from the substation to the existing overhead line in the grass median.

2 - 115KV overhead transmission circuits with 2 - 12KV overhead distribution circuits underbuilt. This line will remain in the field.



Exist	New
—○—	—●—
—○—	—●—
—○—	—●—
Line Direction	



**Think
Safety**

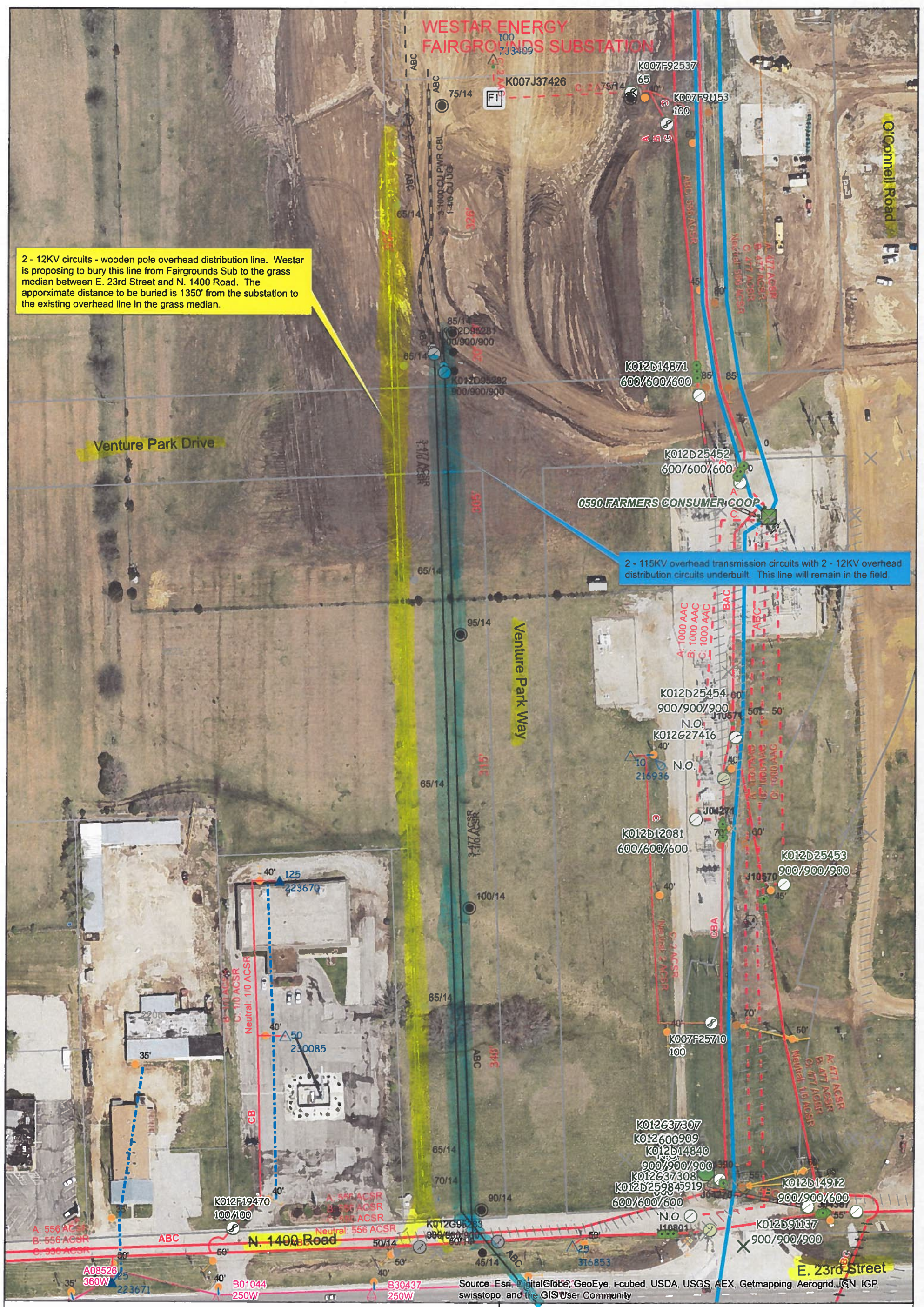


Title Fairgrounds Sub 12KV circuits to south (feeds west along 23rd St.)		
By Peter Trembly 785-220-1028	WR # 001405	Crew HQ 5823
Date 8/4/2014	Scale 1 inch = 100 feet	Sheet Page 1 of 1
Sub/Ckt FAIG 12-04 FAIG 12-14	Upstream Device FAIG Sub Breakers	

**WESTAR ENERGY
FAIRGROUNDS SUBSTATION**

2 - 12KV circuits - wooden pole overhead distribution line. Westar is proposing to bury this line from Fairgrounds Sub to the grass median between E. 23rd Street and N. 1400 Road. The approximate distance to be buried is 1350' from the substation to the existing overhead line in the grass median.

2 - 115KV overhead transmission circuits with 2 - 12KV overhead distribution circuits underbuilt. This line will remain in the field



Source: Esri, DigitalGlobe, GeoEye, i-cubed, USDA, USGS, AEX, Getmapping, Aerogrid, IGN, IGP, swisstopo, and the GIS User Community

Exist	New
—	—
—	—
—	—
—	—
Line Direction	



**Think
Safety**



Title Fairgrounds Sub 12KV circuits to south (feeds west along 23rd St.)		
By Peter Tremblay 785-220-1028	WR # 001405	Crew HQ 5823
Date 8/4/2014	Scale 1 inch = 100 feet	Sheet Page 1 of 1
Sub/Ckt FAIG 12-04 FAIG 12-14	Upstream Device FAIG Sub Breakers	