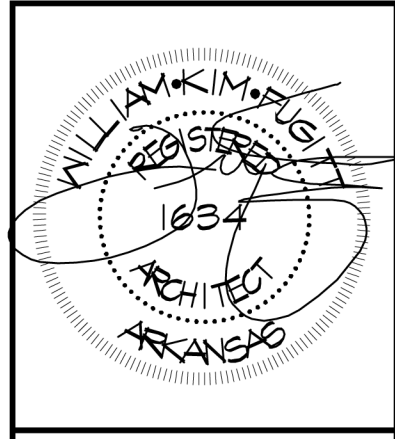


REV	DATE	DESCRIPTION
1		
2		
3		
4		
5		
6		
7		
8		
9		
10		



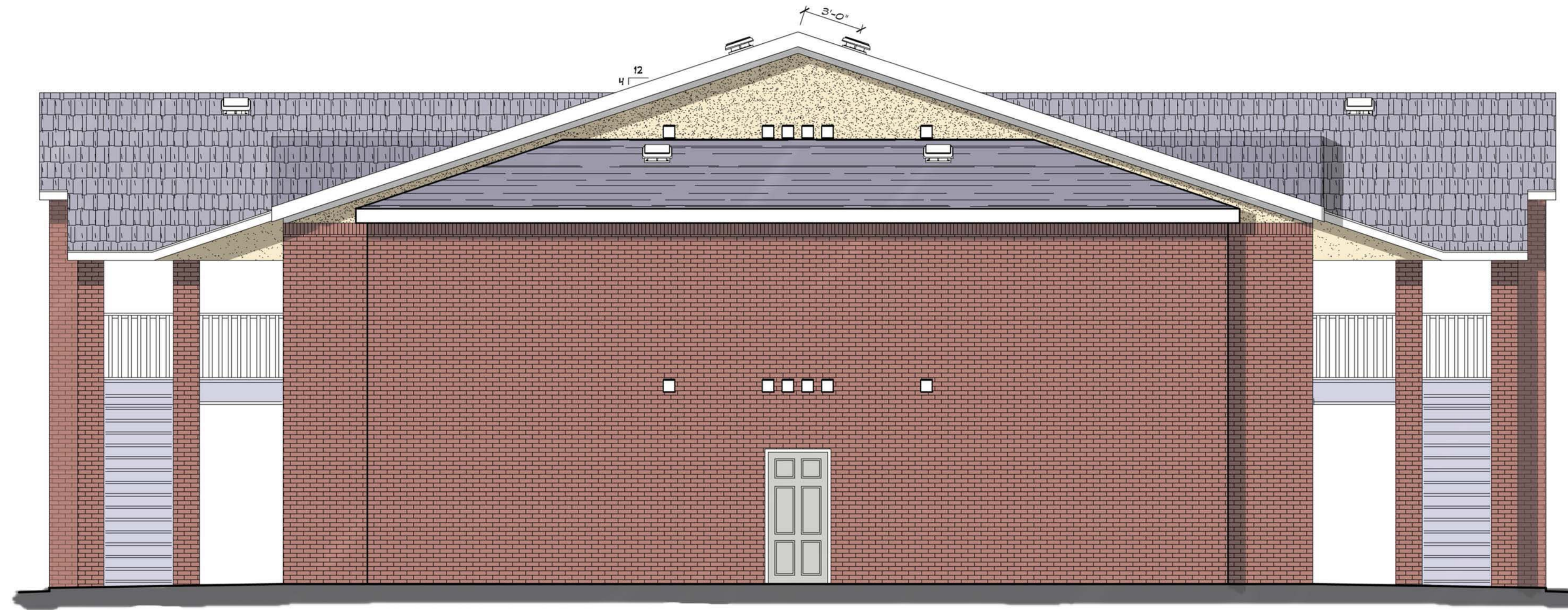
FUGITT AND ASSOCIATES ARCHITECT
 WILLIAM KIM FUGITT AIA
 1200 E. JOYCE BLVD.
 FAYETTEVILLE, AR 72703
 479.521.6686
 KIM.FUGITT@FUGITFAC.COM



FRONT AND REAR ELEVATION
 Scale : 1/4" = 1'-0"

CLASSIC DELUXE IV (3 STORY)

Description:
Location:
Sheet Content:
Sheet:
Document Date:



B
A-3 **RIGHT AND LEFT SIDE ELEVATION**
SCALE : 1/4" = 1'-0"



A
A-3 **FRONT AND REAR ELEVATION**
SCALE : 1/4" = 1'-0"

REF	DATE	DESCRIPTION	ISSUED	DRAWN
A				
A				
A				
A				
A				
A				
A				

ARCH D - 24 X 36 IN.
(PORTRAIT)

FUGITT AND ASSOCIATES ARCHITECT
WILLIAM KIM FUGITT AIA

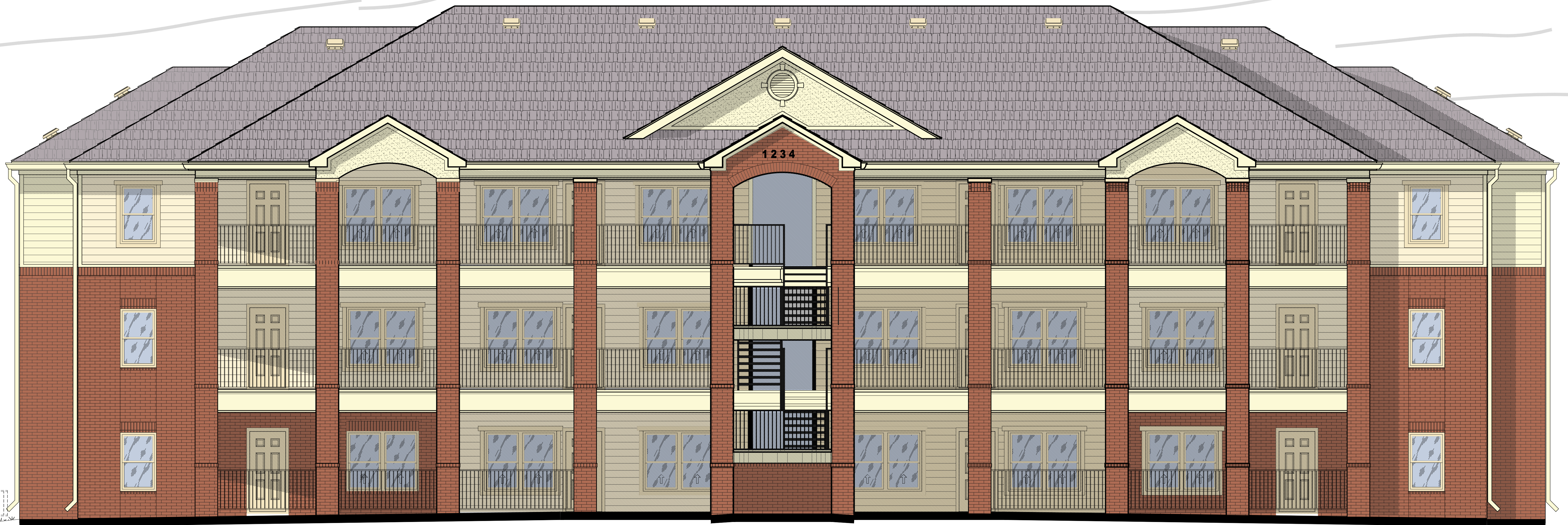
1200 E. JOYCE BLVD.
FAYETTEVILLE AR 72705
479.521.6686
KIM.FUGITT@FUGITTARC.COM

CLASSIC DELUXE II APARTMENT

DESCRIPTION:
CUSTOM DELUXE III (3 Story)
LOCATION:
SHEET CONTENT:
Front Elevation
SHEET:



David M. Olson ©2005



A FRONT AND REAR ELEVATION
BB Scale : 1/4" = 1'-0"

REF	DATE	DESCRIPTION	ISSUED	DRAWN
1				
2				
3				
4				
5				
6				
7				
8				
9				
10				

ARCH D - 24 X 36 IN.
(PORTRAIT)

FUGITT AND ASSOCIATES
ARCHITECT
 WILLIAM KIM FUGITT AIA

1200 E. JOYCE BLVD.
 FAYETTEVILLE, AR 72703
 479.521.6686
 KIM.FUGITT@FUGITTARC.COM

CUSTOM DELUXE III + (BB 3 STORY)

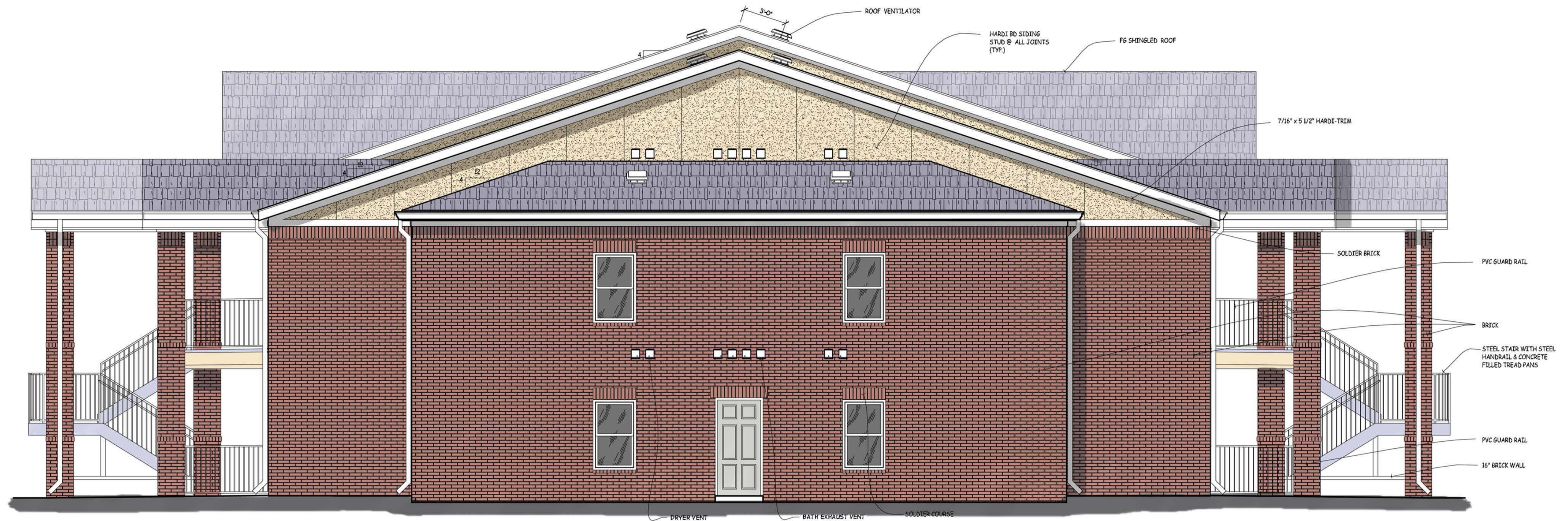
DESCRIPTION:
 CUSTOM DELUXE III + (BB 3 Story)
 LOCATION:

SHEET CONTENT:
 Front and Rear Elevation
 Window Details

SHEET:
BB

DOCUMENT DATE:
 July 3, 2014

LAST EDITED BY: MITCH
 FA_JOBFELEVZ.RENDERINGS\CUSTOM BB3BOY.DWG



B
A-3 **RIGHT AND LEFT SIDE ELEVATION**
Scale: 1/4" = 1'-0"



A
A-3 **FRONT AND REAR ELEVATION**
Scale: 1/4" = 1'-0"

REF	DATE	DESCRIPTION	ISSUED	DESIGN
A				
B				
C				
D				
E				
F				
G				
H				
I				
J				
K				
L				
M				
N				
O				
P				
Q				
R				
S				
T				
U				
V				
W				
X				
Y				
Z				

ARCH D - 24 X 36 IN.
PORTRAIT

FUGITT AND ASSOCIATES ARCHITECT
WILLIAM KIM FUGITT AIA

1200 E. JOYCE BLVD.
FAYETTEVILLE, AR 72703
479.521.6686
KIM.FUGITT@FUGITTARC.COM

CUSTOM DELUXE III

DESCRIPTION:	CUSTOM DELUXE III (3 Story)
LOCATION:	
SHEET CONTENT:	Front Elevation
SHEET:	A-4
DOCUMENT DATE:	February 6, 2013

REV	DATE	DESCRIPTION
1		
2		
3		
4		
5		
6		
7		
8		
9		
10		

ISSUED: _____
DRAWN: _____

William Kim Fugitt, a.i.a.
 1165 Joyce Blvd. Fayetteville, AR. 72703
 phone: 479-521-6686 e-mail: kim.fugitt@fugittarc.com

CUSTOM DELUXE III (3 STORY)

CUSTOM DELUXE III (3 Story)
 FRONT ELEVATIONS
 SHEET

November 10, 2011



A FRONT AND REAR ELEVATION
 Scale: 1/4" = 1'-0"