



THE UNIVERSITY OF KANSAS
CITY OF LAWRENCE

Proposed Lawrence Transit Center

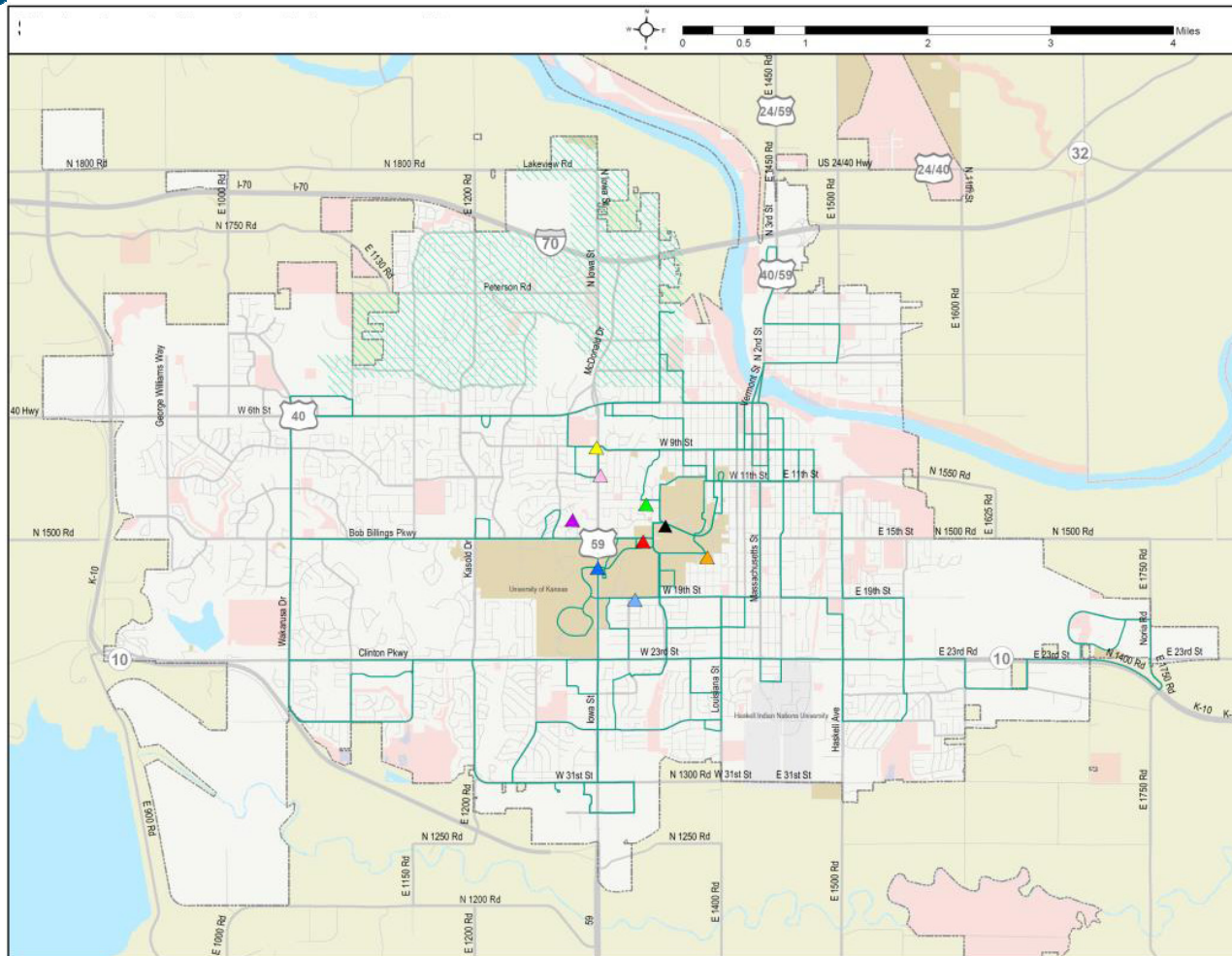
Neighborhood Meeting

Fire Station 5

April 21, 2014



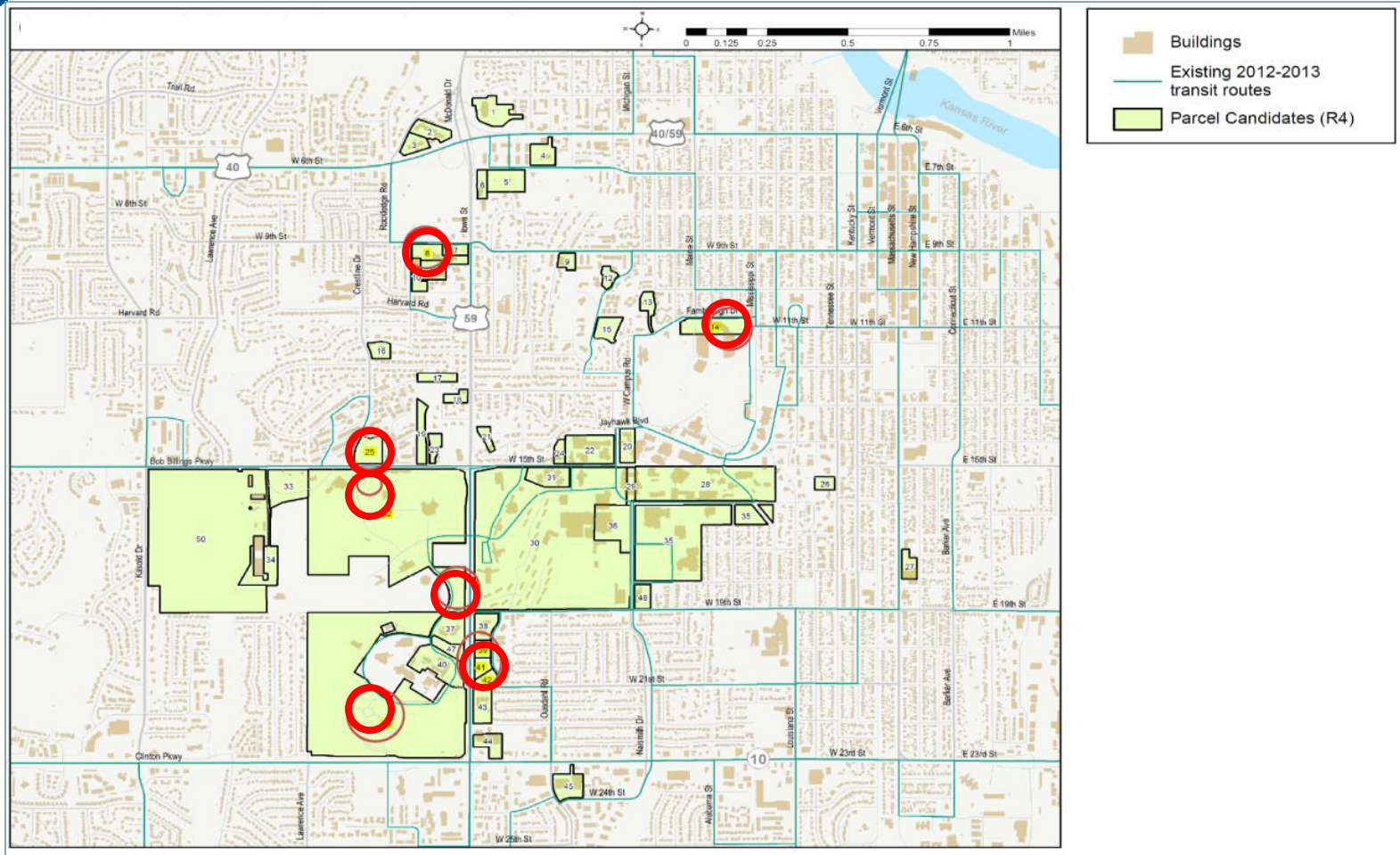
Mean Center Locations



- ▲ Mean Center of Urban Growth Area
- ▲ Mean Center of Lawrence destinations
- ▲ Mean Center of street intersections
- ▲ Center of the minimum boundary of existing City routes including flex zone
- ▲ Center of the minimum boundary of existing KU routes
- ▲ Mean center of Lawrence employers weighted by number employed
- ▲ Center of Lawrence city limits including islands
- ▲ Mean center of Lawrence block groups with low to moderate income over 50% weighted by population
- ▲ Mean center of Lawrence census block groups weighted by population
- Existing 2012-2013 transit routes
- ▨ Flex zone 2012-2013
- Parcels owned by KU or KU Endowment
- Parcels owned by City of Lawrence
- Universities



Candidate Sites Locations





THE UNIVERSITY OF KANSAS
CITY OF LAWRENCE

Candidate Sites



925 Iowa



1101 Fambrough



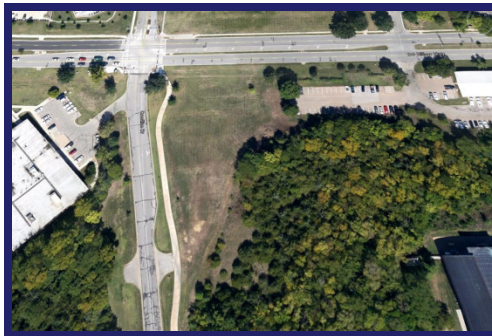
NE Corner Crestline and Bob Billings



19th and Iowa



2021 Stewart



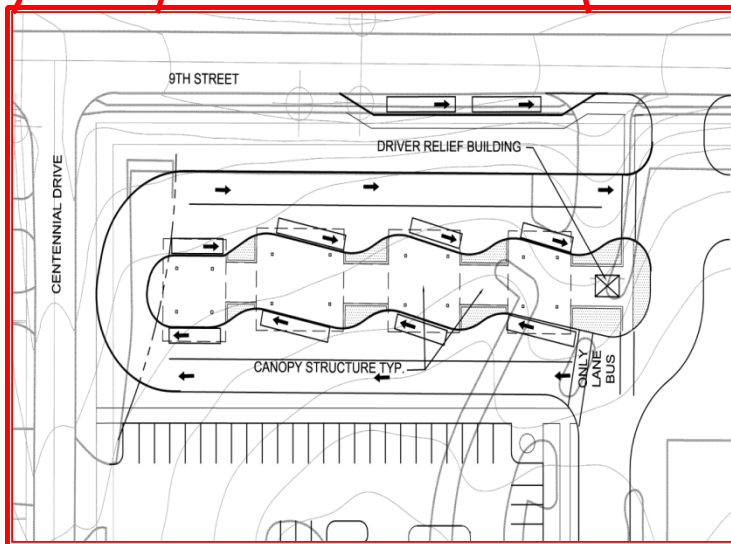
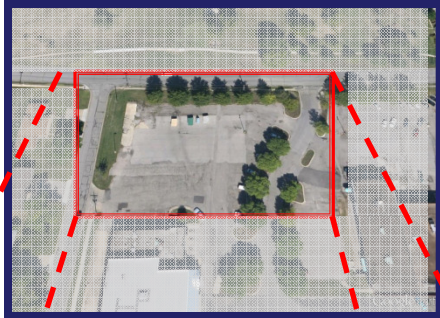
SE Corner Crestline and Bob Billings



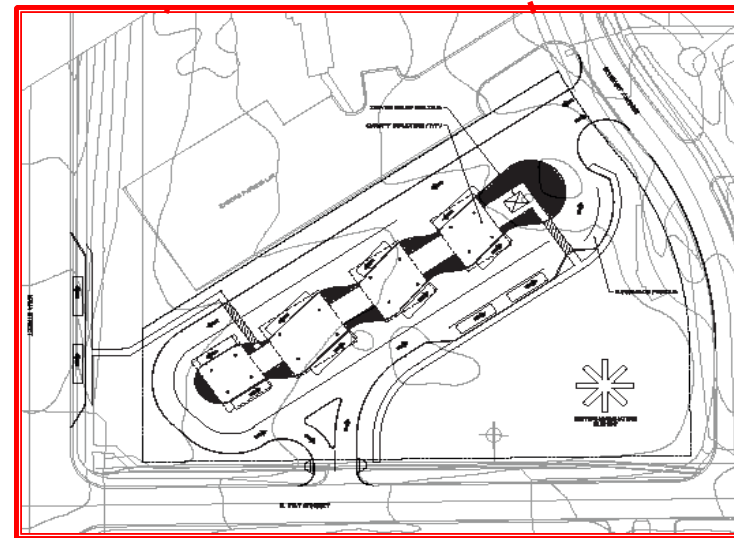
2029 Becker



Candidate Sites



925 Iowa



2021 Stewart



THE UNIVERSITY OF KANSAS
CITY OF LAWRENCE

Comments and Concerns

- Site
- Traffic
- Process



THE UNIVERSITY OF KANSAS
CITY OF LAWRENCE

Comments and Concerns (Site Related)

- What would be included at the site?
- Will there be parking?
- Will there be security?
- How will you maintain the cleanliness of the site?
- Are there plans for the parcels just north of the site?
- Will there be fueling?
- How many buses will use the site?
- How long will people have to wait at the site before catching a bus?
- Are the buses environmentally friendly?
- How will you control noise?
- What are the comparative costs of the two sites?



Cost Comparison of Sites

	925 Iowa	2021 Stewart Avenue	
Capital	Direct Site Costs*	\$ 1,840,150	\$ 1,879,657
	Adjacent Costs	\$ 296,200	\$ 132,650
	Roadway Improvements	\$ 1,376,412	\$ 861,751
	Contingency	\$ 771,373	\$ 600,902
	<i>Sub-total site costs</i>	<i>\$ 4,284,135</i>	<i>\$ 3,474,960</i>
	Additional Vehicle Costs	\$ 310,000	\$ 620,000
	Rts that added 1 vehicle	Rt 1	Rt 1, Rt 6
Total Capital Costs	\$ 4,594,135	\$ 4,094,960	
Annual	Route Renetworking	\$ 366,061	\$ 487,769
	Maintenance	\$ 30,000	\$ 30,000
	Water, sewer, electric	\$ 14,500	\$ 14,500
	Vandalism Repair	\$ 3,000	\$ 3,000
	Total Annual Costs	\$ 413,561	\$ 535,269

**These costs do not include land acquisition costs.*



THE UNIVERSITY OF KANSAS
CITY OF LAWRENCE

Site Plan

2021 Stewart Avenue





THE UNIVERSITY OF KANSAS
CITY OF LAWRENCE

Elevations 2021 Stewart Avenue

Disclaimer:

Elevation drawings are based on conceptual site plan created for costing and conceptualization purpose only. Eventual design details and elements may differ.



ELEVATION CUT at 21ST STREET LOOKING NORTH



ELEVATION FROM 21st STREET & STEWART AVE. LOOKING NORTHWEST





Comments and Concerns (Traffic Related)

- How many buses currently operate on Ousdahl at 21st?
- Will “big” buses conflict with children going to and from the elementary school?
- Will bus traffic conflict with the fire response?
- Will this site cause problems for bicyclists?
- Will there be a traffic study to show the impact of a new signal?
 - Is a traffic signal warranted at 21st and Iowa?
 - Will a new signal at 21st and Iowa increase traffic in the neighborhood?
 - Will a new signal at 21st and Iowa make it more difficult for businesses around 23rd Street?
 - What can be done to lessen the impacts of a new signal at 21st and Iowa?



Related Roadway Improvement Costs

925 Iowa - Related Roadway Improvement Costs

9th Street Repaving	\$	1,376,412
Repave north leg of Rockledge		
	Contingency	\$ 344,153
	Opinion of Probable Cost	\$ 1,720,515

2021 Stewart - Related Roadway Improvement Costs

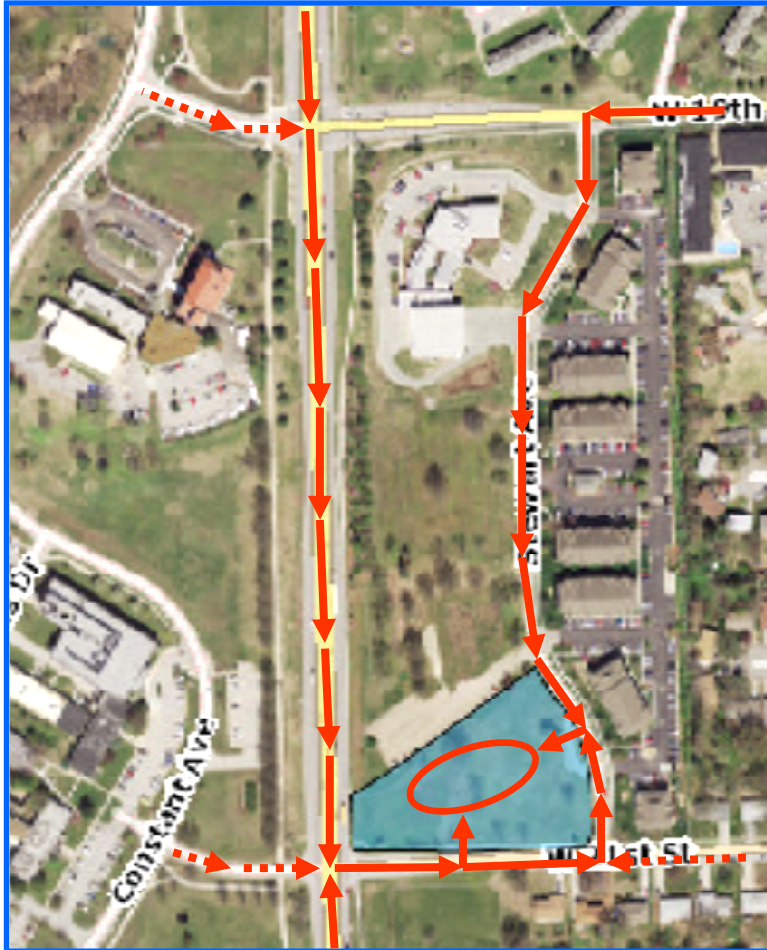
Extend Westbound Left turn lane from 50' to 150' plus taper*	\$	39,993
Add Left Turn Lane to the West Leg of 21st & Iowa	\$	82,076
Add NB Right Turn Lane to 21st & Iowa	\$	92,377
Repave W. 21st St. and Stewart St from Iowa to Transit Center Entrance	\$	521,798
Install Traffic Signal at 21st St. & Iowa, northbound 150' Left-Turn Lane	\$	165,000
	Contingency	\$ 198,440
	Opinion of Probable Cost	\$ 1,060,191

*Would be included in repaving. Is not included in contingency or total.

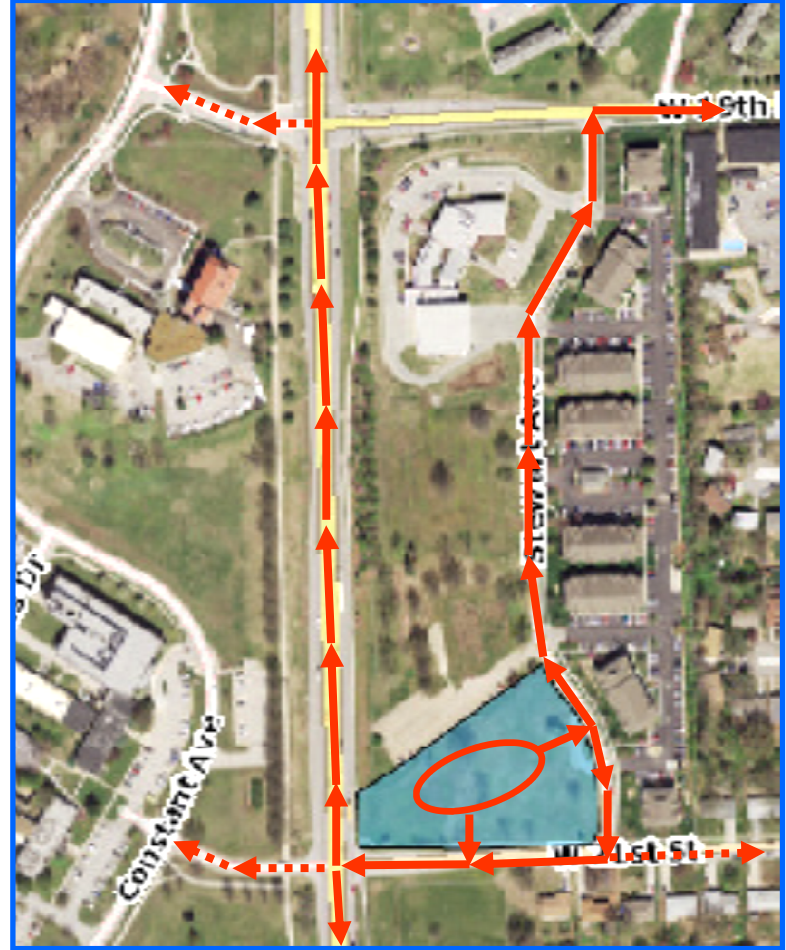


Proposed Bus Movement

Inbound



Outbound





THE UNIVERSITY OF KANSAS
CITY OF LAWRENCE

Potential Traffic Calming Approaches





THE UNIVERSITY OF KANSAS
CITY OF LAWRENCE

Potential Traffic Calming Approaches (cont.)





Potential Traffic Calming Approaches (cont.)





THE UNIVERSITY OF KANSAS
CITY OF LAWRENCE

Potential Traffic Calming Approaches (cont.)





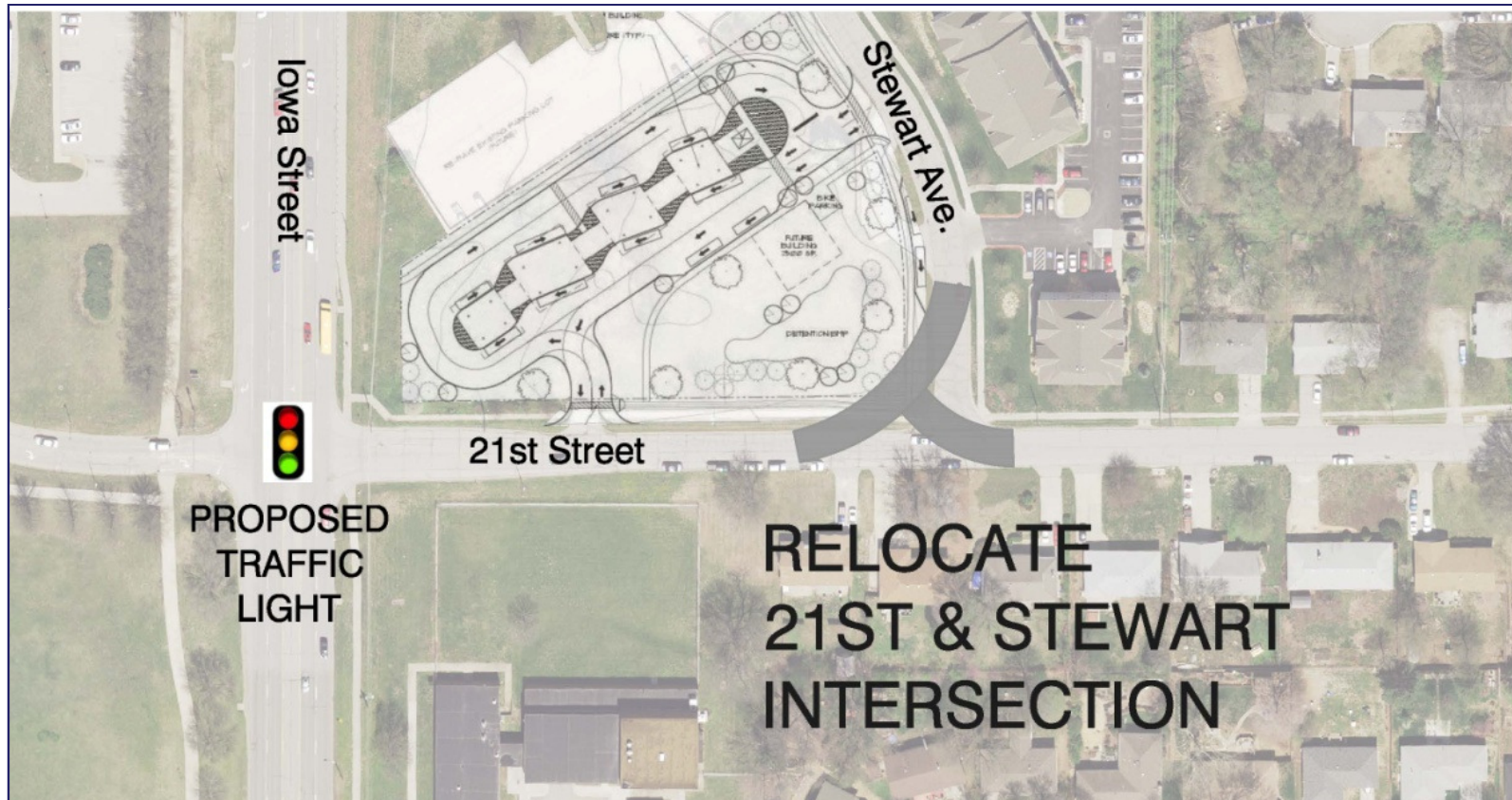
THE UNIVERSITY OF KANSAS
CITY OF LAWRENCE

Potential Traffic Calming Approaches (cont.)





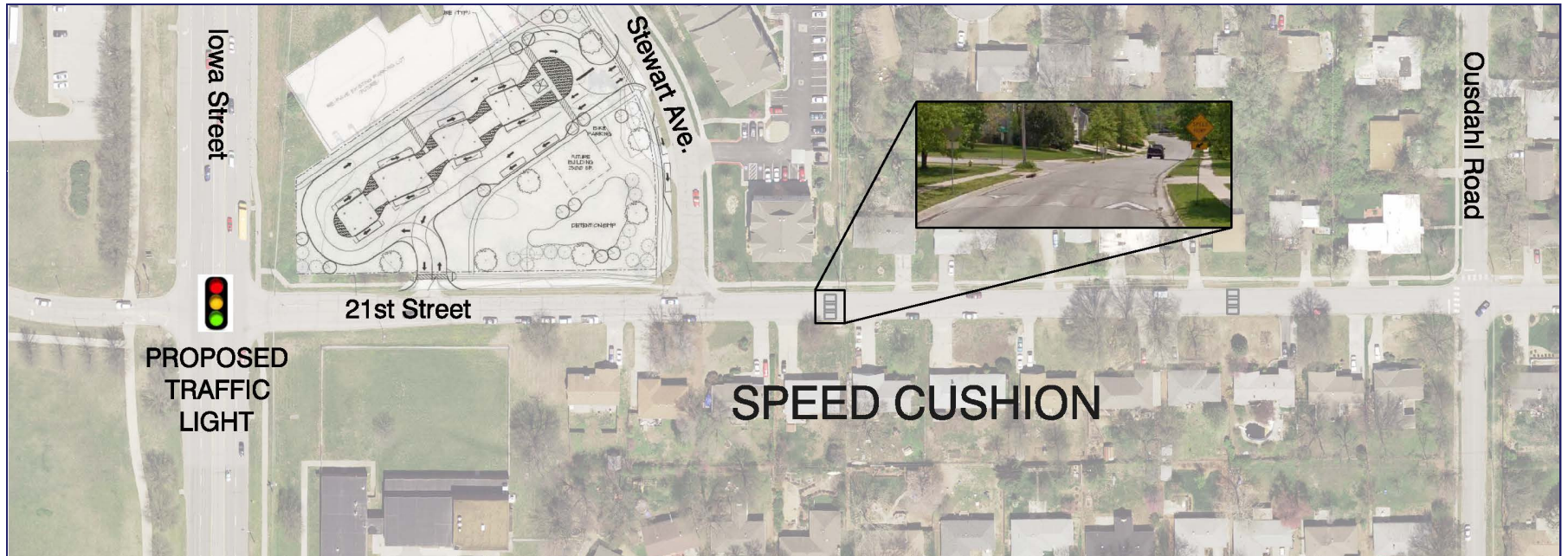
Potential Traffic Calming Approaches (cont.)





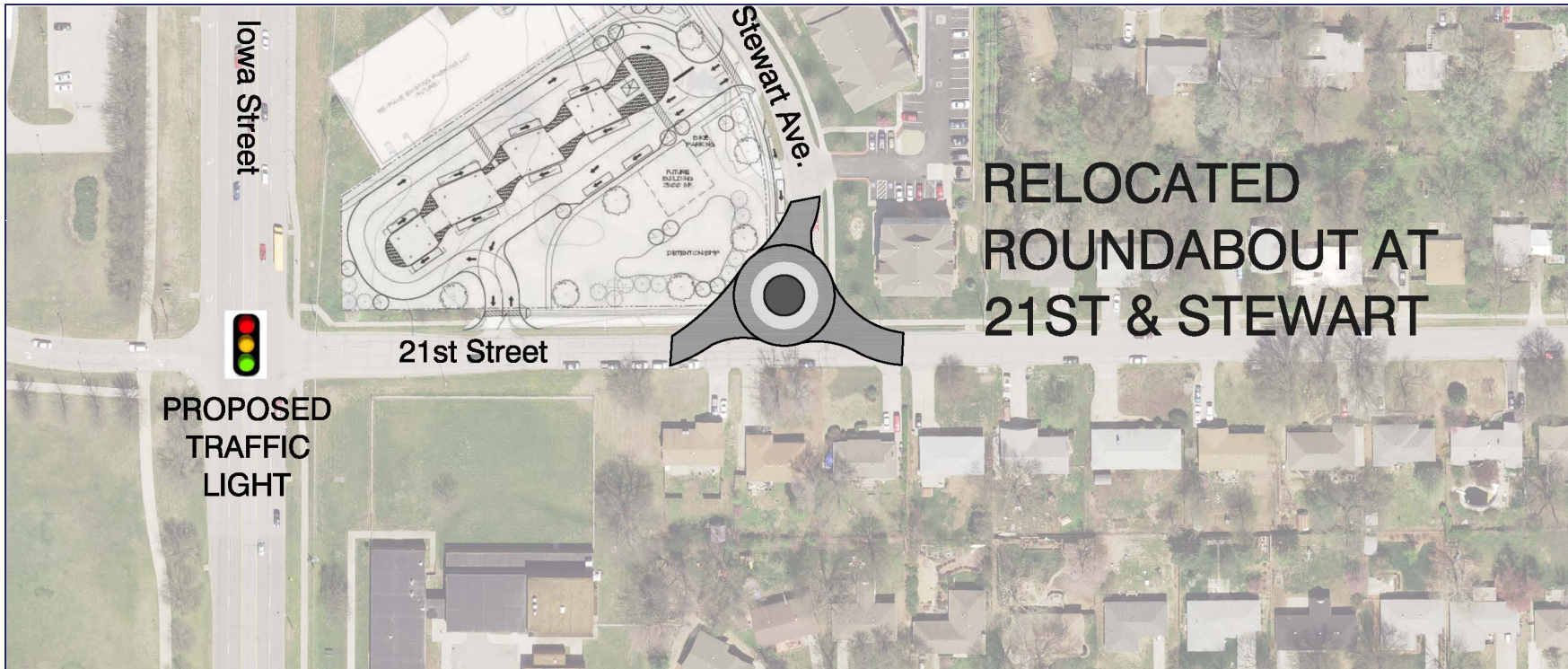
THE UNIVERSITY OF KANSAS
CITY OF LAWRENCE

Potential Traffic Calming Approaches (cont.)





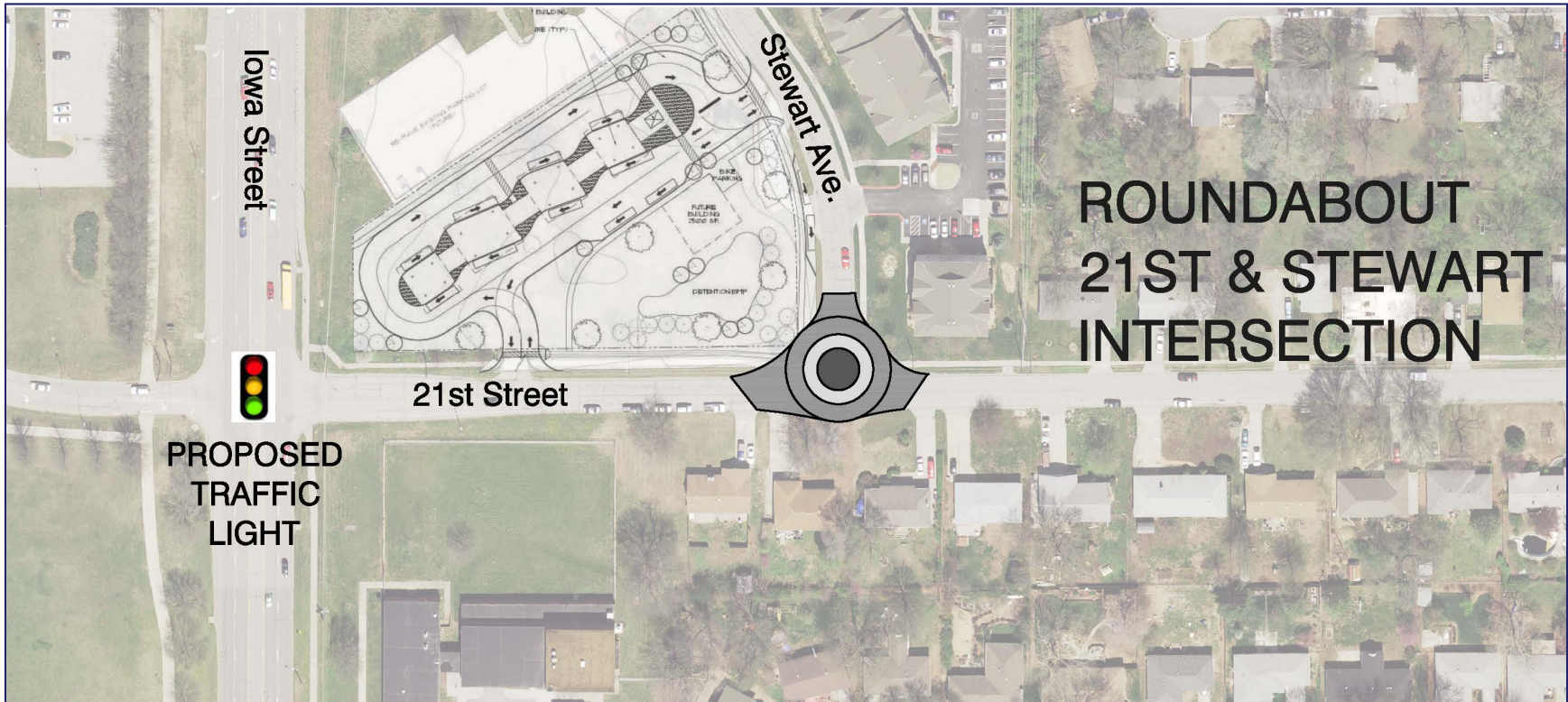
Potential Traffic Calming Approaches (cont.)





THE UNIVERSITY OF KANSAS
CITY OF LAWRENCE

Potential Traffic Calming Approaches (cont.)





THE UNIVERSITY OF KANSAS
CITY OF LAWRENCE

Comments and Concerns (Process Related)

- Will there be a neighborhood meeting for the 9th and Iowa site?
- When will the City make a decision regarding the location of the transit center?



THE UNIVERSITY OF KANSAS
CITY OF LAWRENCE

Contact Information

Robert A. Nugent, Public Transit Administrator
Lawrence Transit
rnugent@lawrenceks.org
785.832.3464

Diane Stoddard, Assistant City Manager
City of Lawrence
dstoddard@lawrenceks.org
785.832.3413

Barry Swanson, Associate Vice Provost for Campus Operations,
University of Kansas
bswanson@ku.edu
785-864-5978