

INDEX OF SHEETS

1. Title Sheet
2. Summary Of Quantities
- 3.-9. Typical Sections with Microsurfacing Details
10. Typical Sections with Milling and Overlay Details
- 11.-17. 6th Street Microsurfacing Plan Sheets
18. 23rd Street Milling and Overlay Plan Sheets
19. Summary of Surfacing Quantities
- 20.-27. Pavement Marking Plan Sheets
28. Summary and Recapitulation of Pavement Marking Quantities
29. Video Detection Plan Sheets
- 30-37. Traffic Control Standards
38. Standard Pavement Marking Details
- 39.-41. Traffic Signal Specifications
42. Miscellaneous Details

STATE OF KANSAS
DEPARTMENT OF TRANSPORTATION

KLINK 1R RESURFACING PROJECT FY 2014
WEST 6TH STREET (U.S. 40 HWY.), K-10 HIGHWAY TO FOLKS ROAD
23RD STREET (K-10 HWY.), EAST OF IOWA STREET TO OUSDAHL ROAD
CITY OF LAWRENCE, KANSAS
DOUGLAS COUNTY

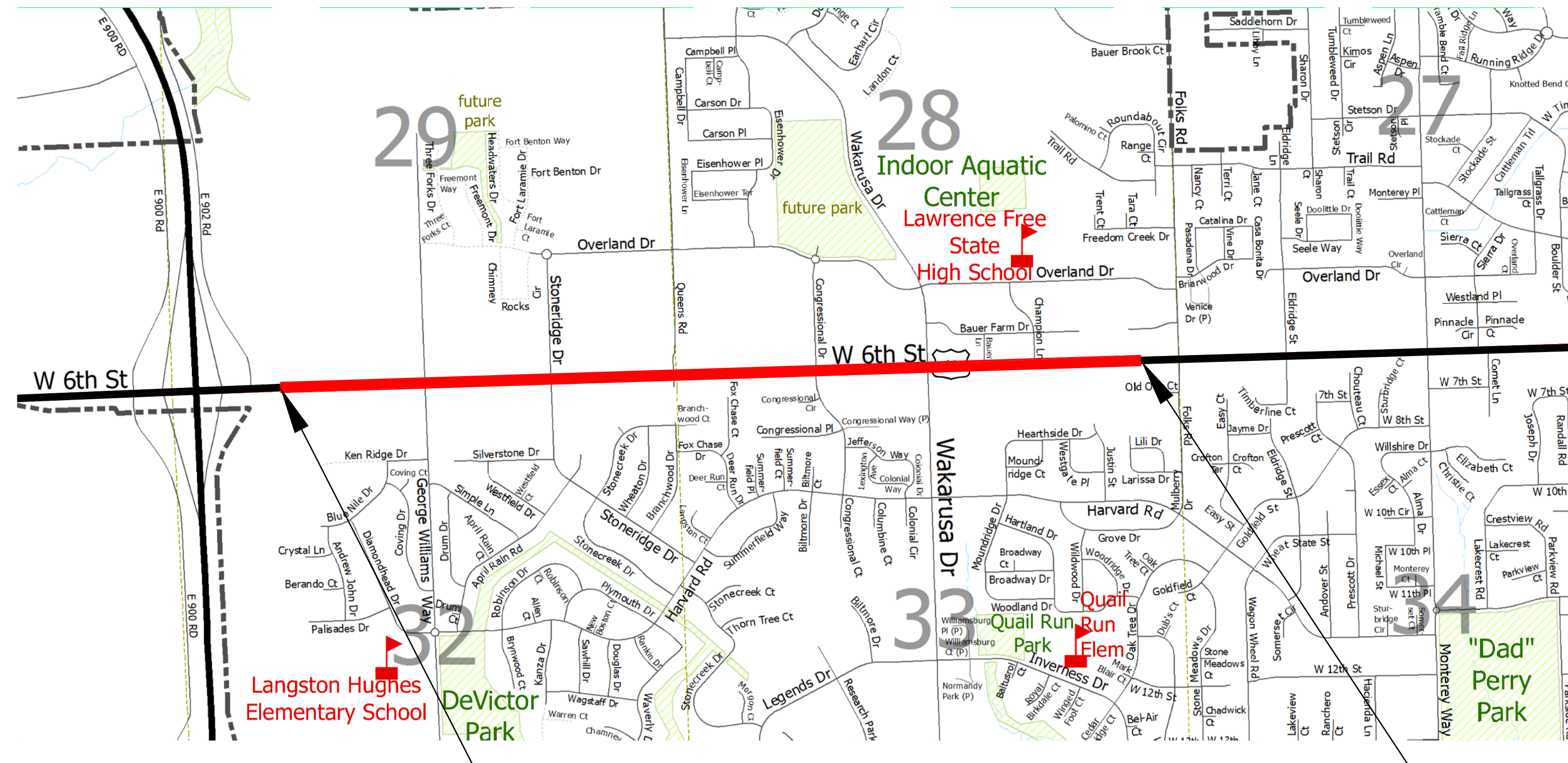
FHWA REG NO.	STATE	PROJECT NO.	YEAR	SHEET NO.	TOTAL SHEETS
7	KANSAS	??-23 U-????-??	2015	1	42

- 2 INCH MILL AND 2 INCH OVERLAY
- COLD PLASTIC PAVEMENT MARKING
- HEAT FUSED, PREFORMED, THERMOPLASTIC PAVEMENT MARKING
- PAVEMENT PATCHING

THERE IS NON-PARTICIPATING WORK TO BE PERFORMED AS PART OF THIS CONTRACT. IT INCLUDES:
-MISCELLANEOUS CURB AND GUTTER REMOVAL AND REPLACEMENT

NOTE: TRAFFIC SHALL BE CARRIED THROUGH CONSTRUCTION DURING THE MILLING, OVERLAY, AND PAVEMENT MARKING OPERATIONS

THE CONTRACTOR MUST HAVE A TRAFFIC CONTROL PLAN APPROVED BY THE CITY AND KDOT PRIOR TO WORK STARTING.

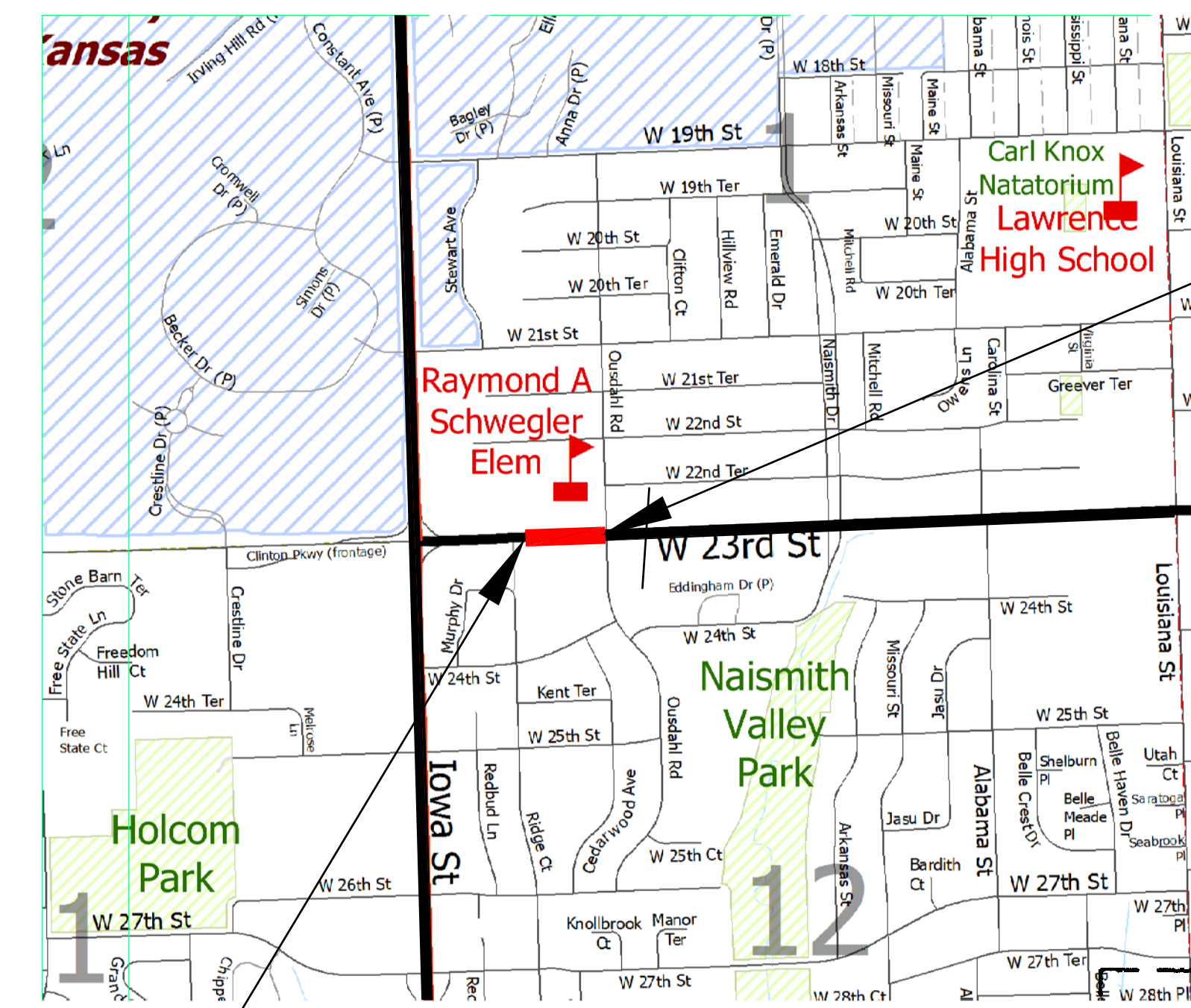
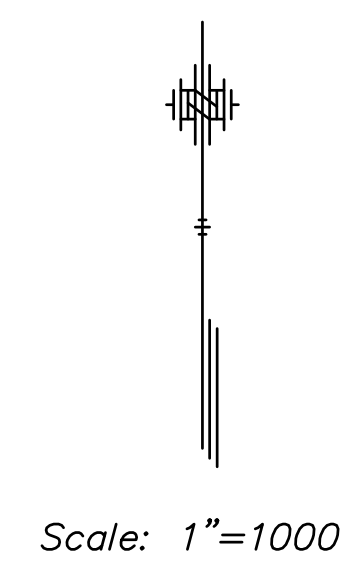


STA. 454+75.07 BEGIN
Project No. ??-23 U-????-??
Klink 1R Resurfacing
Near K-10 Highway and
W. 6th Street Intersection

STA. 546+10.90 END
Project No. ??-23 U-????-??
Klink 1R Resurfacing
Near Folks Road and
W. 6th Street Intersection

AADT (6th Street) = 20,000±
Posted Speed Limits:
From West City Limits To Folks Road=45mph
Percentage Of Truck Traffic: 4.5%

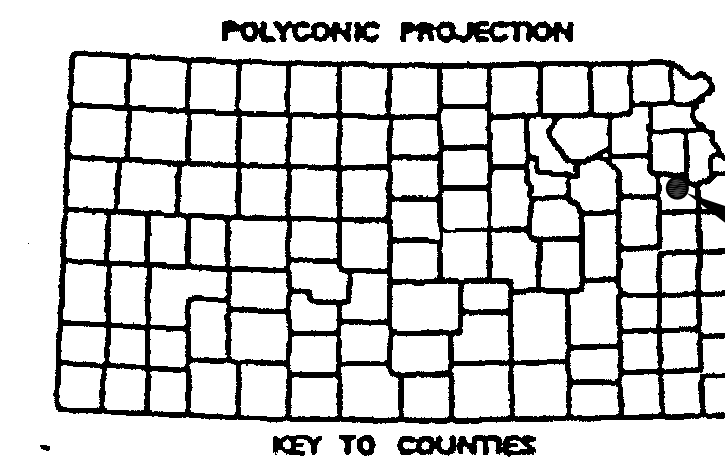
AADT (23rd Street) = 20,000±
Posted Speed Limits:
From Iowa Street To Ousdahl Road=35mph
Percentage Of Truck Traffic: 4.5%



STA. 13+01.64 END
Project No. ??-23 U-????-??
Klink 1R Resurfacing
Near Ousdahl Road and
W. 23rd Street Intersection

STA. 7+72.10 BEGIN
Project No. ??-23 U-????-??
Klink 1R Resurfacing
Near Iowa Street and
W. 23rd Street Intersection

LOCATION FOR
"PRELIMINARY PLANS"
STAMP



CITY OF LAWRENCE
2011 POPULATION: 88,727

UTILITY OWNER	UTILITY TYPE	CONTACT PERSON	PHONE NUMBER	EMAIL ADDRESS
Black Hills Energy	Gas	Charles C. Hoag	(785) 832-3944	chuck.hoag@blackhillscorp.com
Knology	Cable	Tim Templeton	(785) 856-8530	ttempleton@sunflowerbroadband.com
AT&T	Telephone	Kimball E. Parker	(785) 276-6142	kp3805@att.com
City of Lawrence - PW	Stormwater	Matt Bond	(785) 832-3142	mbond@lawrenceks.org
Westar Energy	Electric	Mike Solida	(785) 865-4850	Mike.Solida@westarenergy.com
City of Lawrence - Utilities	Water & Sewer	John Shutak	(785) 832-7801	jshutak@lawrenceks.org
Light Core	Communication		(866) 562-4349	
Southern Star Central Gas	Gas		(800) 324-9696	

U.S. 40 HWY. (W. 6TH STREET)		
GROSS LENGTH OF PROJECT	9,135.83 ft.	1.730 mi.
NET LENGTH OF BRIDGES	0.000 ft.	0.000 mi.
NET LENGTH OF PROJECT	9,135.83 ft.	1.730 mi.

K-10 HWY. (W. 23RD STREET)		
GROSS LENGTH OF PROJECT	529.54 ft.	0.100 mi.
NET LENGTH OF BRIDGES	0.000 ft.	0.000 mi.
NET LENGTH OF PROJECT	529.54 ft.	0.100 mi.

LEGEND

NOTE: DRAWING LEGENDS
CAN BE FOUND ON THE
INDIVIDUAL PLAN SHEETS.

RECOM. FOR APPROVAL - DATE

CHIEF BUREAU OF TRAFFIC ENGINEERING
KANSAS DEPARTMENT OF TRANSPORTATION

APPROVED - DATE

STATE TRANSPORTATION ENGINEER
KANSAS DEPARTMENT OF TRANSPORTATION

RECOM. FOR APPROVAL-DATE

FEDERAL HIGHWAY ADMINISTRATION
DEPARTMENT OF TRANSPORTATION

RECOM. FOR APPROVAL - DATE

CITY ENGINEER
CITY OF LAWRENCE, KANSAS