

Figure 1
City of Lawrence
Flow Monitoring Program
2014 RFP Sites

Flow Monitoring Locations

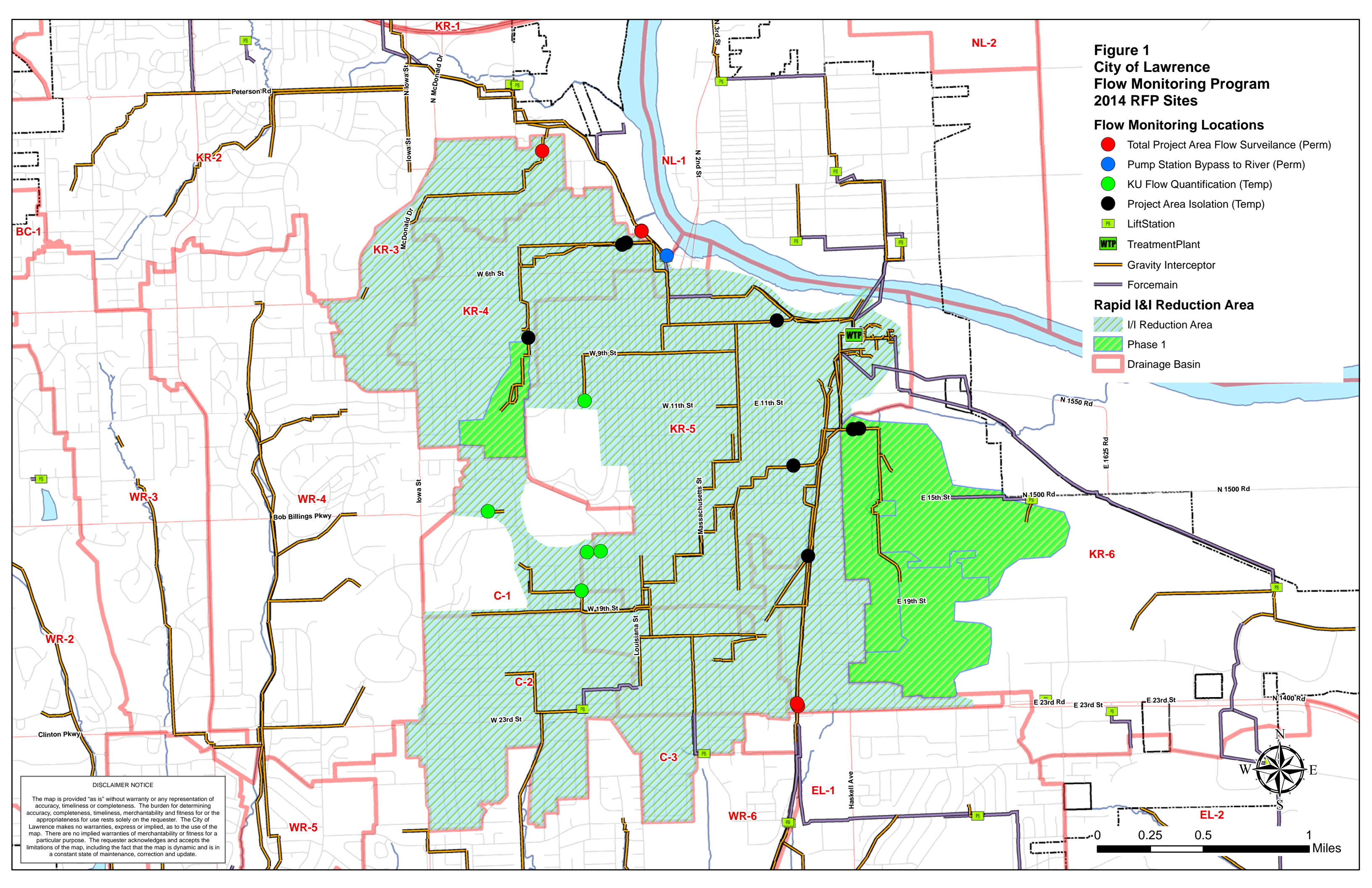
- Total Project Area Flow Surveillance (Perm)
- Pump Station Bypass to River (Perm)
- KU Flow Quantification (Temp)
- Project Area Isolation (Temp)

- PS LiftStation
- WTP TreatmentPlant

- Gravity Interceptor
- Forcemain

Rapid I&I Reduction Area

- I/I Reduction Area
- Phase 1
- Drainage Basin



DISCLAIMER NOTICE

The map is provided "as is" without warranty or any representation of accuracy, timeliness or completeness. The burden for determining accuracy, completeness, timeliness, merchantability and fitness for or the appropriateness for use rests solely on the requester. The City of Lawrence makes no warranties, express or implied, as to the use of the map. There are no implied warranties of merchantability or fitness for a particular purpose. The requester acknowledges and accepts the limitations of the map, including the fact that the map is dynamic and is in a constant state of maintenance, correction and update.

