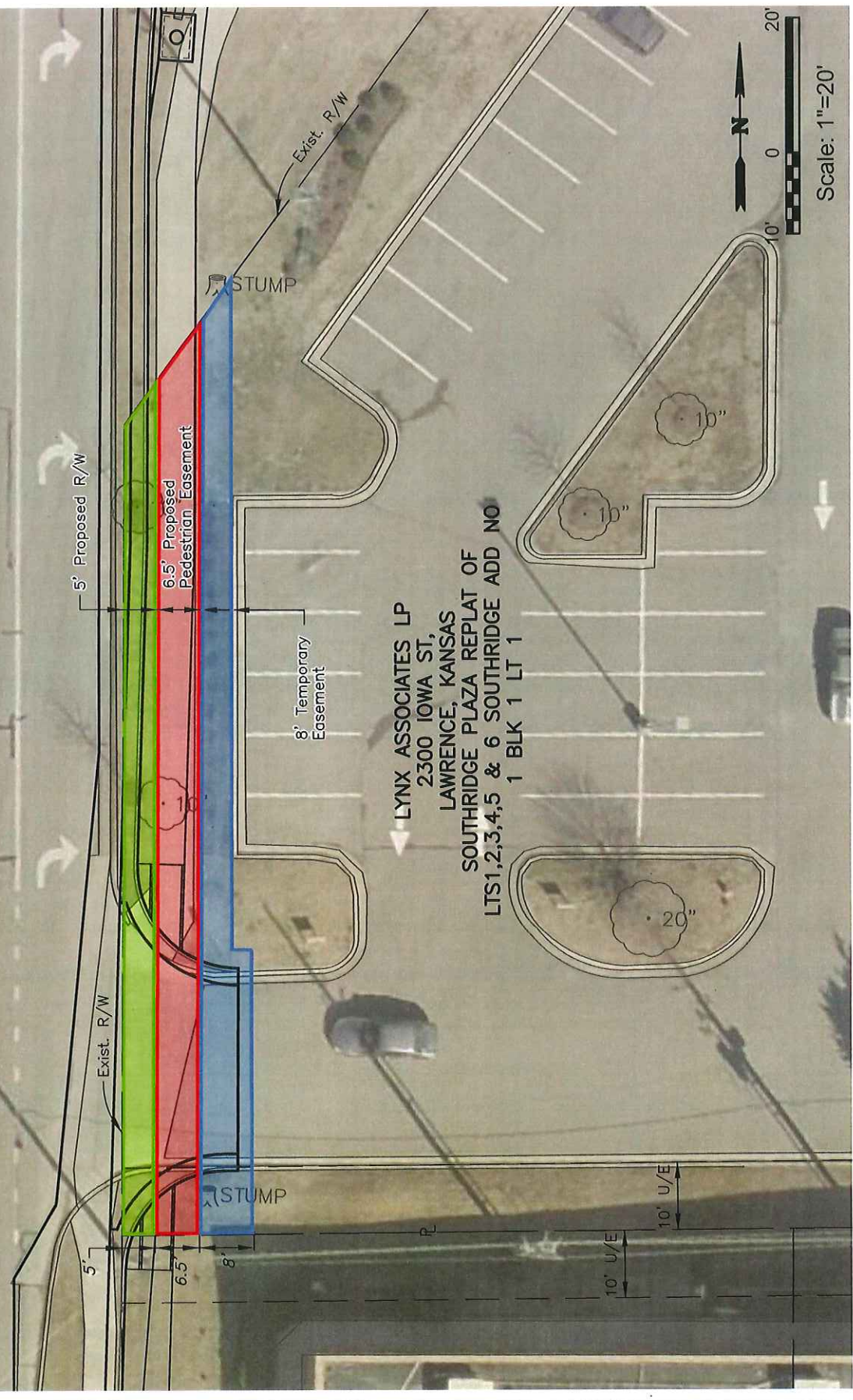


4a

US-59/K-10 (IOWA STREET)



LYNX ASSOCIATES LP
 2300 IOWA ST,
 LAWRENCE, KANSAS
 SOUTHRIDGE PLAZA REPLAT OF
 LTS1,2,3,4,5 & 6 SOUTHRIDGE ADD NO
 1 BLK 1 LT 1

4b

W 1/4 Cor.
12-13-19

K-10 (23RD STREET)

Section Line

Existing R/W

5' Proposed
Pedestrian &
Utility Easement

6' Temporary
Easement

15'

25'

10' U/E

10' U/E

LYNX ASSOCIATES LP
2300 IOWA ST,
LAWRENCE, KANSAS
SOUTHRIDGE PLAZA REPLAT OF
LTS1,2,3,4,5 & 6 SOUTHRIDGE ADD NO
1 BLK 1 LT 1



Scale: 1"=40'