

AGENDA: TSC 11/4/13

ITEM NO. 3: Consider request to establish NO PARKING 7AM-5PM OR 6PM MONDAY-FRIDAY or NO PARKING 7AM-5PM or 6PM SCHOOL DAYS along the south side of Overland Drive from Champion Lane east 1225 feet.

Staff Report:

1. Overland Drive is classified as a "collector" street and is paved approximately 30 feet wide; this is a sufficient width to permit parking along one side of the street and maintain room for two-way traffic.
2. Collector streets are paved wider in order to permit intermittent parking along both sides of the street or consistent parking along one side of the street.

MINUTES: TSC 11/4/13

ITEM NO. 3:

Consider request to establish NO PARKING 7AM-5PM OR 6PM MONDAY-FRIDAY OR NO PARKING 7AM-5-PM OR 6PM SCHOOL DAYS along the south side of Overland Drive from Champion Lane east 1225 feet.

Woosley reviewed the information provided in the staff report.

Public Comment:

Tom Mulinazzi, 4505 Woodland Drive, Board Member, Theater Lawrence: We have a problem, we have a beautiful facility, we don't have enough parking; we have 139 parking spaces in our parking lot, we have 299 seats in our theater, we have a staff of about 20 that work a show, and a cast that ranges from 3-40; we need more parking in the area; we have caused problems with some of our neighbors; so we came up with the idea of permitting parking on the south side of Overland Drive after 5:00 or 6:00 o'clock.

Mary Doveton, 817 April Rain Road, Director, Theater Lawrence: We have used the high school parking lot with the blessing of high school staff; we have even used Dillon's parking lot for an event; we are trying to use every square inch that we can and not infringe on our neighbors parking.

Commission Discussion:

Commissioner Russell: My concern, if this is approved, is that we sufficient sight distance at the driveway and the approach to the curve heading to Folks Road.

MOTION BY COMMISSIONER ZIEGELMEYER, SECOND BY COMMISSIONER DEVLIN, TO RECOMMEND ESTABLISHING NO PARKING 7AM-6PM MONDAY-FRIDAY ALONG THE SOUTH SIDE OF OVERLAND DRIVE FROM CHAMPION LANE AND PROVIDE

SUFFICIENT SIGHT DISTANCE WHERE APPROPRIATE, EAST 1225 FEET; THE
MOTION CARRIED, 8-0.

From: Mulinazzi, Thomas E. [mailto:tomm@ku.edu]
Sent: Thursday, September 26, 2013 2:15 PM
To:
Cc:
Subject: Overland Drive south of Freestate High School

Dear Traffic Safety Board,

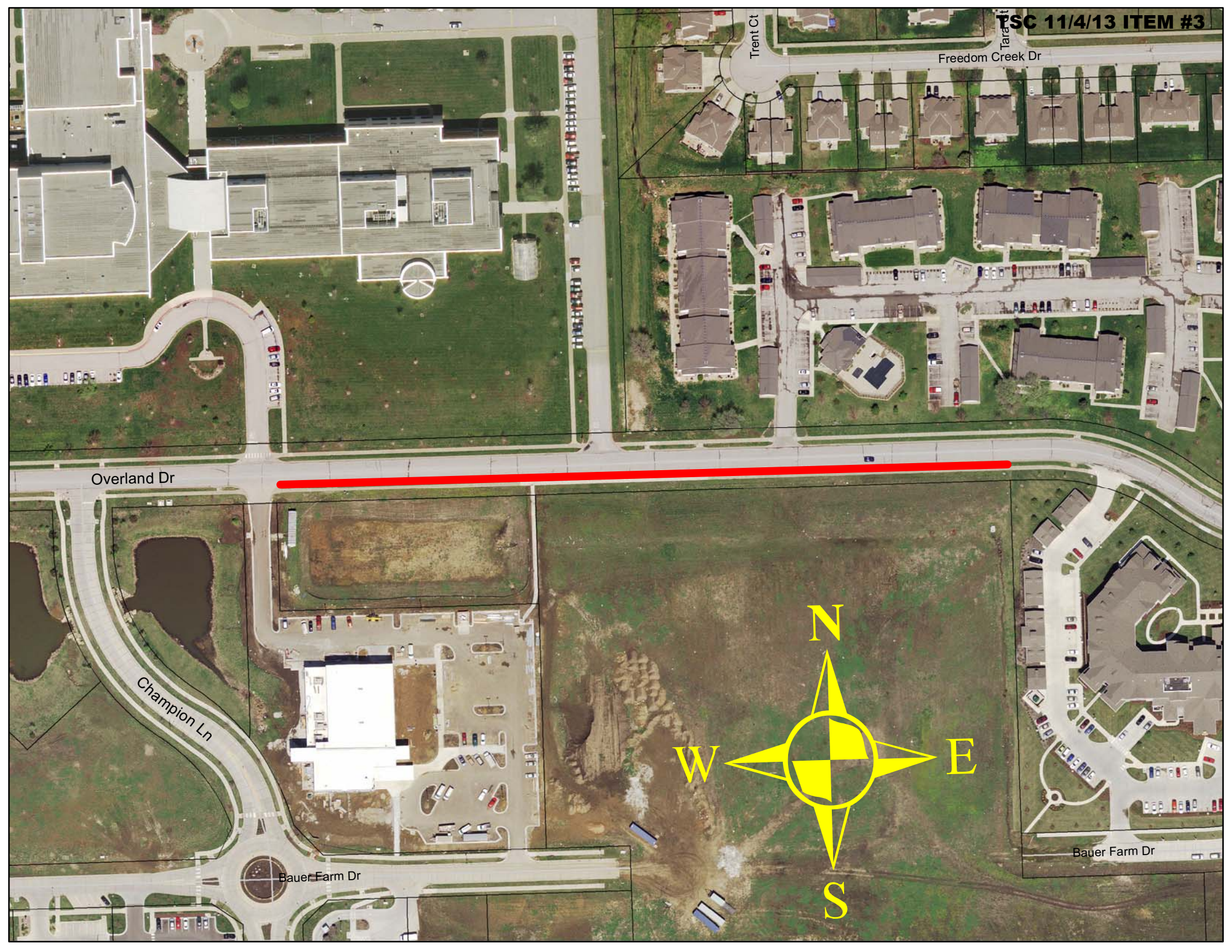
I am on the Board of Theatre Lawrence. Our original parking plan had more parking spaces, but the number of spaces was reduced through the process of plan review by the city. We are now having parking problems when we have a large cast, musicians, crew and a full house for one of our performances, which we usually have on some Thursday, Friday, and Saturday evenings and a Sunday Matinee. I would like to request that the parking restrictions on Overland Drive between Champion Drive east to somewhere near the Meadowlark property line be changed. Currently, there is NO PARKING signs on both sides of Overland Drive, which is adjacent to Free State High School. I understand the parking restrictions when school is in session. I would like to propose the following for the south side of Overland Drive:

1. NO PARKING 7:00 am to 5:00 or 6:00 pm Monday to Friday, or
2. NO PARKING 7:00 am to 5:00 or 6:00 pm on School Days

Overland Drive is 31 ft. 3 inches in width back of curb to back of curb. This provides about a 28 ft. travelled way. An on-street parking stall is 8 ft. wide, which would leave a 20 foot travelled way for two way traffic. The north side of Overland Drive would still retain the NO PARKING signs. We would encourage our cast, orchestra, crew, and performers to park on the south side of Overland Drive if this change is granted. I would like to meet with the Traffic Safety Commission when you consider this request.

Sincerely,

Tom Mulinazzi



Trent Ct

Freedom Creek Dr

Tara Ct

Overland Dr

Champion Ln

Bauer Farm Dr

Bauer Farm Dr

