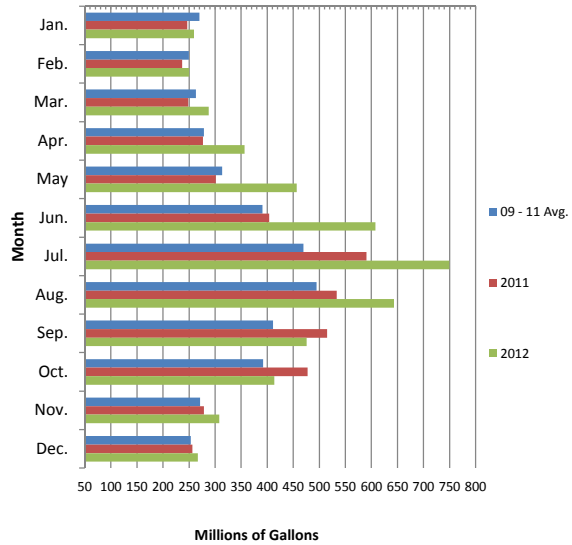


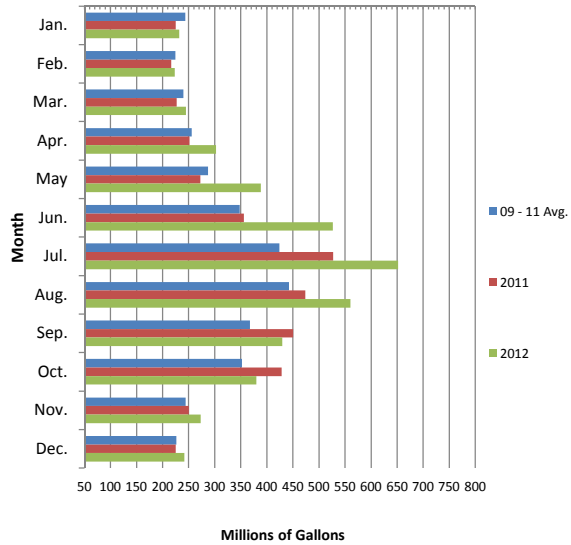
2012 Potable Water Production

Month	09 - 11 Avg.			2011			2012		
	Raw (gal)	Treated (gal)	Billed (gal)	Raw (gal)	Treated (gal)	Billed (gal)	Raw (gal)	Treated (gal)	Billed (gal)
Jan.	270,191,374	243,314,455	153,892,900	246,439,121	224,900,365	229,316,800	259,640,869	231,991,473	226,819,070
Feb.	249,421,194	224,785,391	142,568,900	236,574,582	216,501,174	195,923,050	250,075,928	223,467,974	200,276,670
Mar.	262,975,746	240,149,323	167,032,217	248,553,239	226,911,969	229,479,500	287,575,195	244,743,926	233,359,210
Q1 Total	782,588,314	708,249,170	463,494,017	731,566,942	668,313,509	654,719,350	797,291,992	700,203,374	660,454,950
Apr.	278,515,896	256,012,727	138,445,533	276,839,688	251,750,181	213,516,700	356,519,657	302,521,061	228,878,550
May	313,255,625	287,251,317	166,944,783	301,478,875	272,548,950	254,422,350	456,334,045	388,786,894	289,340,720
Jun.	391,200,456	347,675,560	270,383,933	403,582,367	355,781,679	270,594,900	607,951,157	526,386,829	391,355,780
Q2 Total	982,971,977	890,939,603	575,774,250	981,900,930	880,080,810	738,533,950	1,420,804,859	1,217,694,784	909,575,050
Jul.	469,315,229	423,894,481	223,705,783	590,532,688	527,012,442	364,137,050	749,782,555	651,586,871	514,145,079
Aug.	494,421,186	442,637,289	280,783,517	533,313,558	473,964,867	478,999,350	643,268,555	560,292,001	600,758,960
Sep.	411,107,555	367,597,145	314,830,383	514,702,664	450,295,436	510,494,000	475,518,311	429,876,706	513,661,890
Q3 Total	1,374,843,970	1,234,128,915	819,319,683	1,638,548,909	1,451,272,745	1,353,630,400	1,868,569,420	1,641,755,578	1,628,565,929
Oct.	391,923,641	352,559,870	391,645,725	477,772,922	428,697,610	429,492,500	413,357,178	379,841,453	407,591,060
Nov.	271,194,259	244,446,343	236,874,667	278,541,777	250,227,029	378,546,000	308,180,176	272,838,875	343,886,330
Dec.	253,126,951	226,144,035	168,124,867	256,409,852	225,069,104	268,155,150	266,796,143	241,986,775	273,149,590
Q4 Total	916,244,850	823,150,248	796,645,258	1,012,724,551	903,993,743	1,076,193,650	988,333,496	894,667,103	1,024,626,980
Annual Total	4,056,649,111	3,656,467,936	2,655,233,208	4,364,741,332	3,903,660,807	3,823,077,350	5,074,999,767	4,454,320,838	4,223,222,909

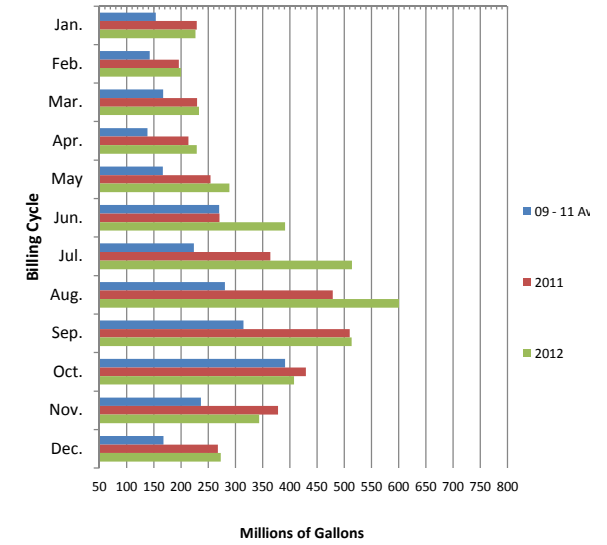
Raw Water



Treated Water



Billed Water



Category Definitions

Raw - Water pumped from Clinton Lake and the Kansas River.

Treated - Water pumped into the transmission and distribution system.

Billed - Water billed to customer during the previous billing cycle (approx. 1 month lag.)