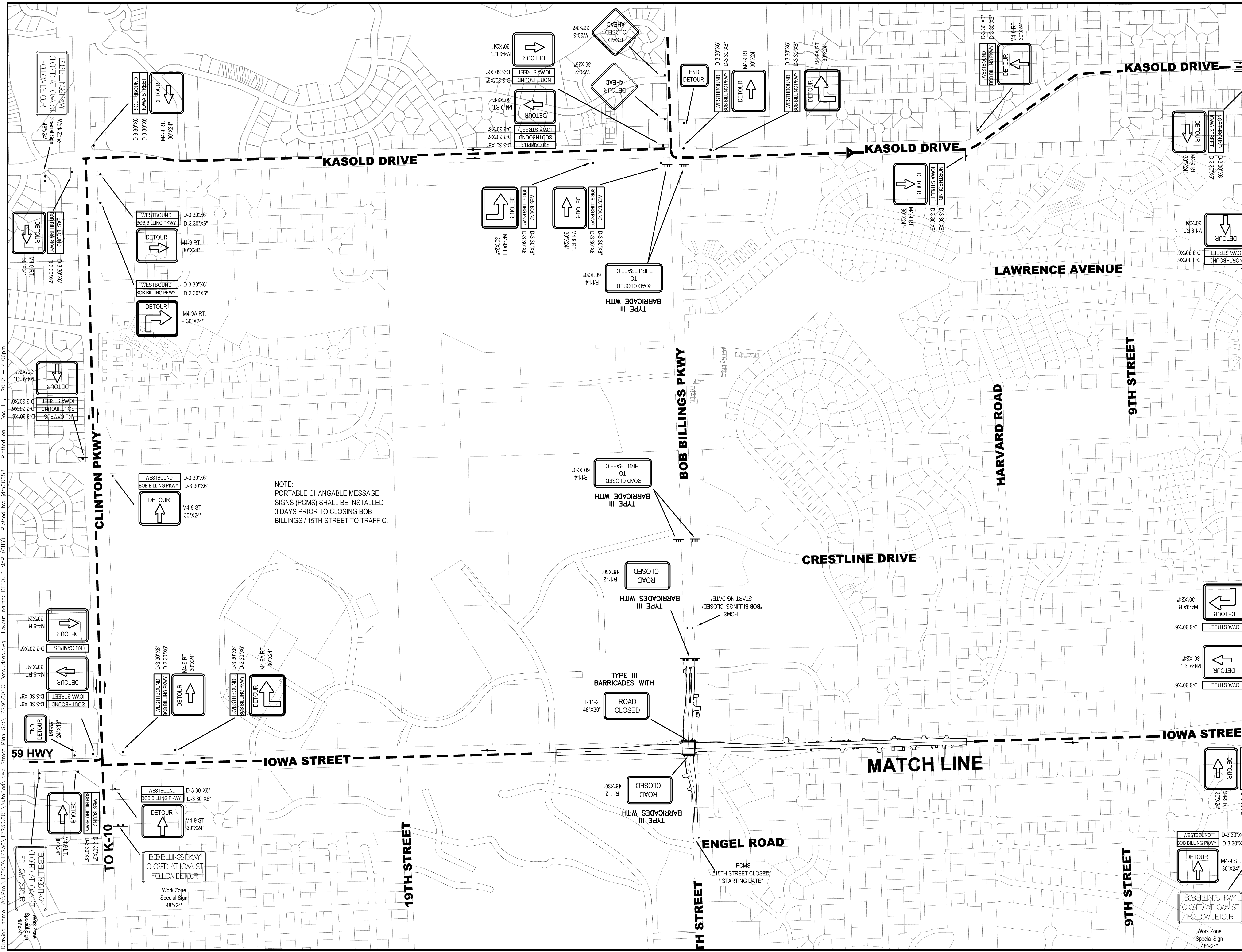


STATE	PROJECT NO.	CITY NO.	YEAR	SHEET NO.	TOTAL SHEETS
KANSAS	59-23 U-0015-01	PW1012	2012	122	197



**Eastbound Bob Billings**

*West of Kasold*

Northbound: Direct traffic to take Kasold to 6th Street, then detour to Iowa

Southbound: Direct traffic to take Kasold to 23rd Street, then detour to Iowa

Traffic to get to KU campus:

Option 1- Take Kasold to 23rd Street, then take Iowa to 19th Street, then turn on Naismith Drive.

Option 2- Continue on Bob Billings to Crestline and detour using Irving Hill

Option 3- Detour to 9th Street using Kasold, then take 9th to Mississippi.

*East of Kasold*

Northbound and Southbound: Go to Kasold and follow Northbound and Southbound paths

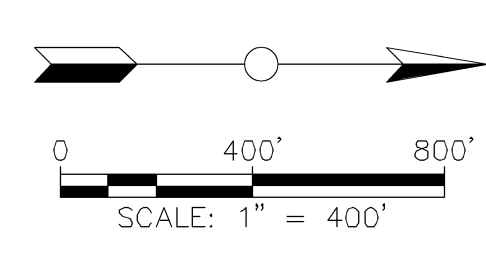
Thru: Go to Crestline to Irving Hill

*Westbound 15th Street*

Northbound: Direct traffic to take Engel to University to Iowa

Southbound: Direct traffic to take Engel to Irving Hill to Constant Avenue to Iowa

Thru traffic: Direct traffic to take Engel to Irving Hill to Crestline to Bob Billings



NO.	DATE	REVISION	BY	APPD
<b>DETOUR MAP - CITY ACCESS</b>				
CLOSURE OF BOB BILLINGS PKWY AND 15TH ST IOWA STREET, IRVING HILL OVERPASS TO SOUTH OF HARVARD STREET & STORM SEWER RECONSTRUCTION				
<b>BARTLETT &amp; WEST</b>				DATE: 11/30/12
544 COLUMBIA DRIVE - LAWRENCE KS 66049 PH. 785.749.9482 - FAX 785.749.5561 WWW.BARTWEST.COM				W.O.: 17230.001
				122 OF 197

Drawing name: W:\Proj\17230\17230.001\AutoCAD\Newa Street - Plan Set\17230.001C-DeTourMap.dwg Layout name: DETOUR Map (CITY) Plotted on: Dec. 11, 2012 - 4:06pm  
 Plot by: jdm0588