

Review of 2012 Season & Next Steps for 2013



commonground
COMMUNITY GARDEN

*Provided by: Eileen Horn, Sustainability Coordinator
November 27, 2012*

Vacant lot: 1313 Pennsylvania



Penn. St. Community Garden



Vacant lot: 830 Garfield



Lawrence Community Orchard



John Taylor Park



Garden Incubator at John Taylor Park



Vacant lot: 815 Oak



JCCC/CMEF Student Farm



2012 Program Review:

Number of gardens: **4**

Number of gardeners: **41**

Number of classes/community work days: **59**

Number of volunteers/community participants: **640**

Pounds of produce grown (*estimate*): **5,800 lbs**

Market value of produce (*estimate*): **\$11,700**

Pounds of donated produce: **550 lbs**

Awarded a MARC “Sustainable Success Story” Award

2013 Next Steps

Eight sites available for license (0.2 acres – 4.5 acres)

Timeline:

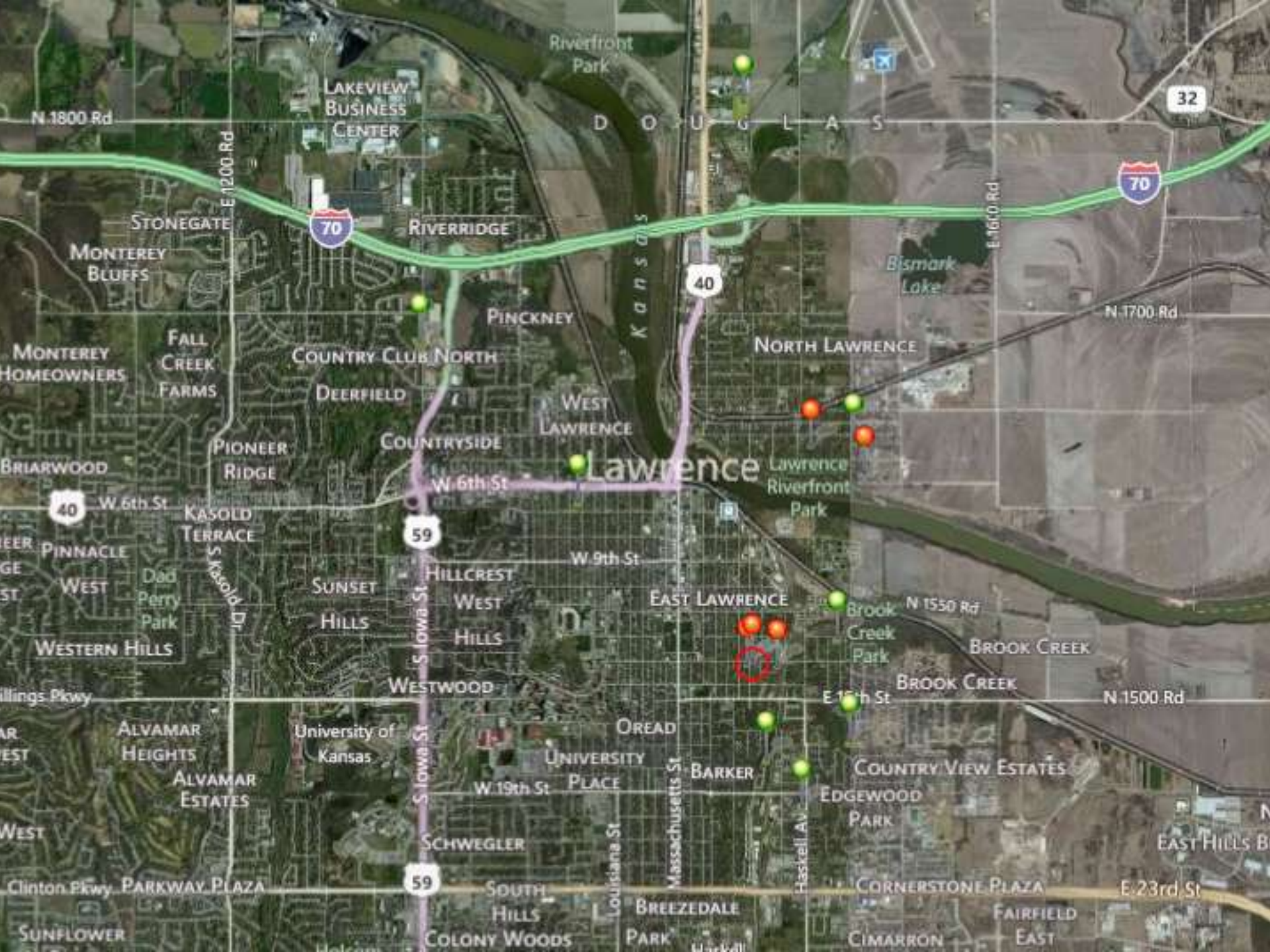
November 26th 2012 – RFA published on website.

December 13th 2012 – 5:00 PM

City Commission Meeting Room (City Hall) – Info meeting for interested applicants and neighbors.

January 4th 2013 – Applications due.

www.lawrenceks.org/common_ground



LAKEVIEW BUSINESS CENTER

Riverfront Park

32

70

RIVERRIDGE

40

70

STONEGATE

MONTEREY BLUFFS

Bismark Lake

N-1700 Rd

MONTEREY HOMEOWNERS

FALL CREEK FARMS

COUNTRY CLUB NORTH

PINCKNEY

NORTH LAWRENCE

DEERFIELD

WEST LAWRENCE

COUNTRYSIDE

Lawrence

Lawrence Riverfront Park

40

W 6th St

KASOLD TERRACE

59

S Iowa St

W 9th St

PINNACLE WEST

Dad Perry Park

SUNSET HILLS

HILLCREST

WEST HILLS

EAST LAWRENCE

Brook Creek Park

N 1550 Rd

BROOK CREEK

WESTERN HILLS

WESTWOOD

University of Kansas

OREAD

UNIVERSITY PLACE

BARKER

COUNTRY VIEW ESTATES

EDGEWOOD PARK

N 1500 Rd

ALVAMAR HEIGHTS

ALVAMAR ESTATES

W 19th St

LOUISIANA ST

MASSACHUSETTS ST

HASKELL AV

CORNERSTONE PLAZA

CIMARRON

FAIRFIELD EAST

EAST HILLS B

WEST

CLINTON PKWY PARKWAY PLAZA

59

SOUTH HILLS

BREEZEDALE PARK

CORNERSTONE PLAZA

E 23rd St

SUNFLOWER

COLONY WOODS

CIMARRON

FAIRFIELD EAST