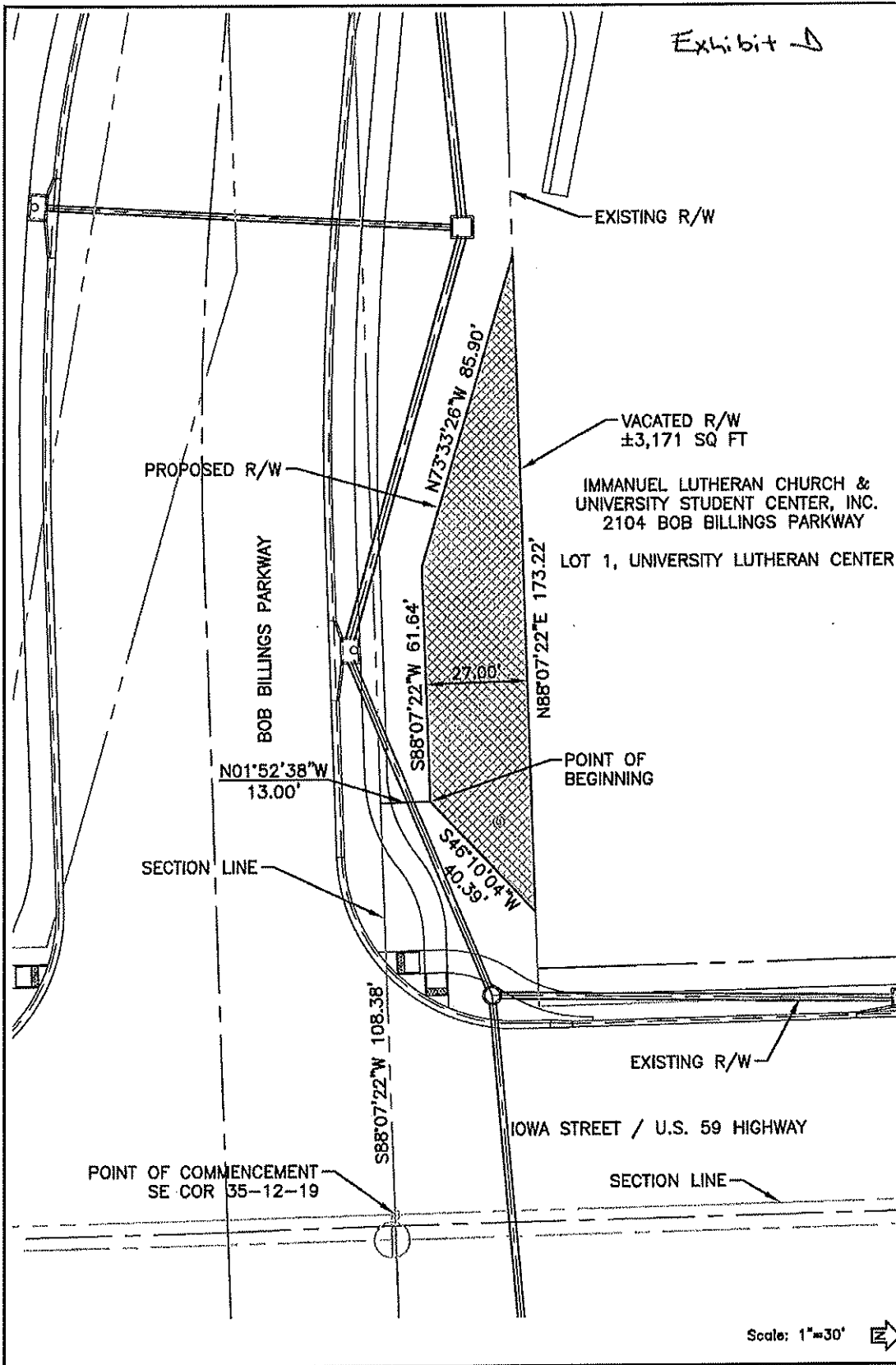


Exhibit D



VACATION OF RIGHT-OF-WAY

BARTLETT & WEST

628 VERMONT STREET - LAWRENCE KS 66044 2252
PHONE 785.749.8482 - FAX 785.749.8961
WWW.BARTWEST.COM

LEGEND:
R/W = RIGHT-OF-WAY

IMMANUEL LUTHERAN CHURCH &
UNIVERSITY STUDENT CENTER, INC.
2104 BOB BILLINGS PARKWAY
LAWRENCE, KANSAS

| | |
|--------------|------------|
| EXHIBIT NO.: | RW-04 |
| DRAWN BY: | DAM |
| APPROVED BY: | LWB |
| PROJ.: | 17230.001 |
| CITY NO.: | - |
| DATE | APRIL 2012 |