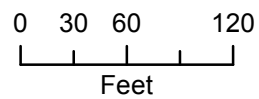


Parking Changes for the 1040 Vermont Street Project

Parking space type

- Accessible
- 2 hour free
- 2 hour meter
- 5 hour meter
- 10 hour meter



Map Date: 1/23/2012



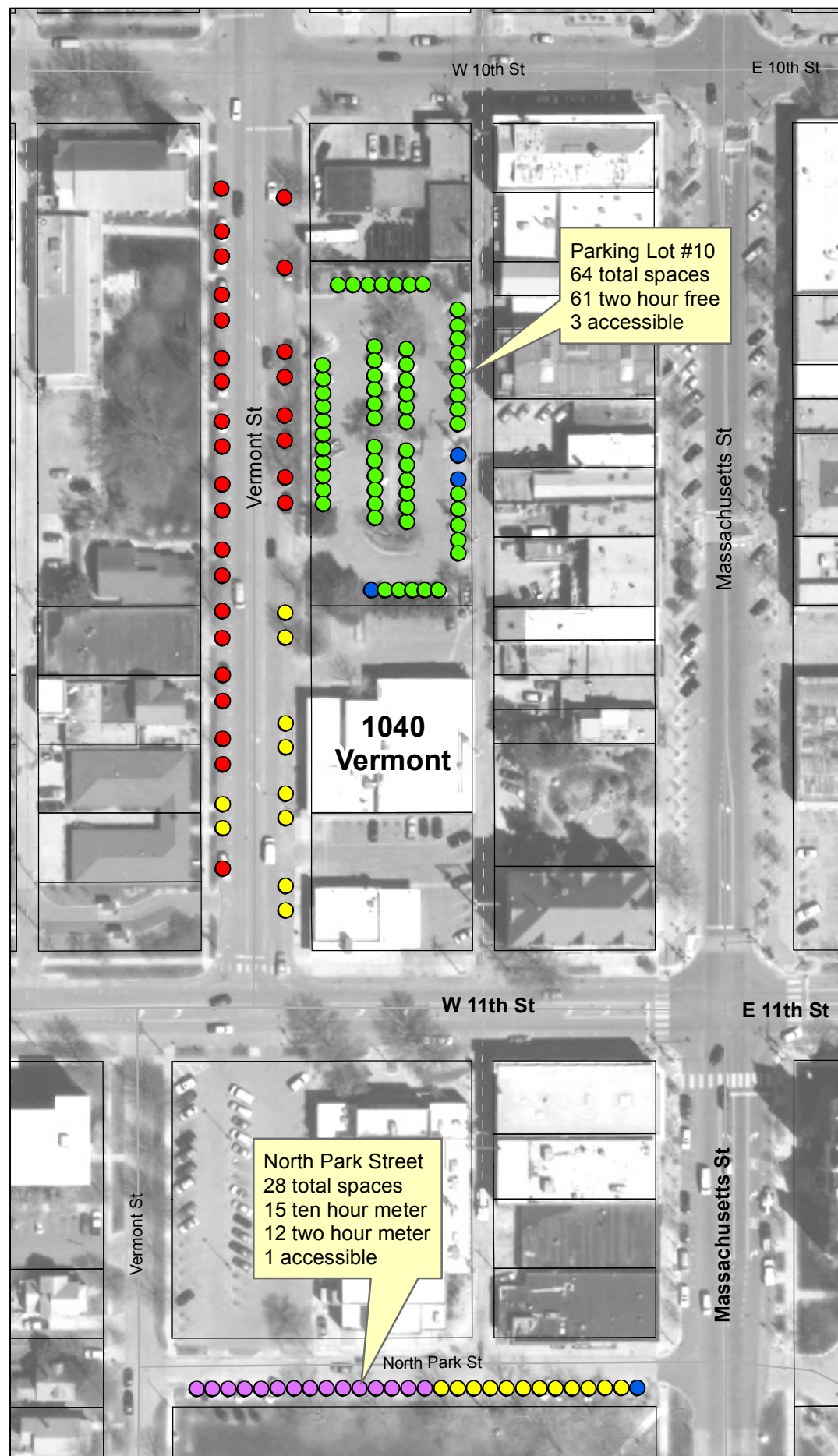
City of Lawrence

Map Disclaimer

The map is provided "as is" without warranty or any representation of accuracy, timeliness or completeness. The burden for determining accuracy, completeness, timeliness, merchantability and fitness for or the appropriateness for use rests solely on the requester. The City of Lawrence makes no warranties, express or implied, as to the use of the map. There are no implied warranties of merchantability or fitness for a particular purpose. The requester acknowledges and accepts the limitations of the map, including the fact that the map is dynamic and is in a constant state of maintenance, correction and update.

Aerial photography collected April 2009

EXISTING



PROPOSED

