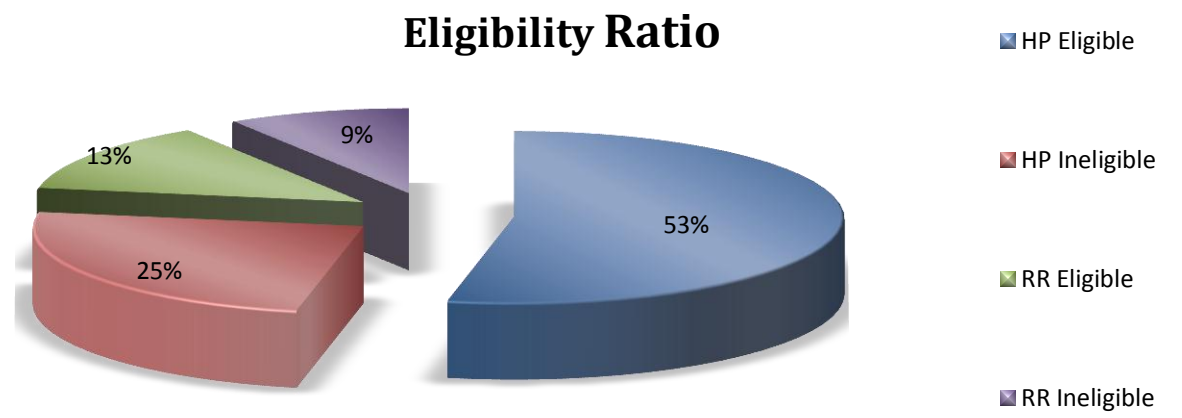
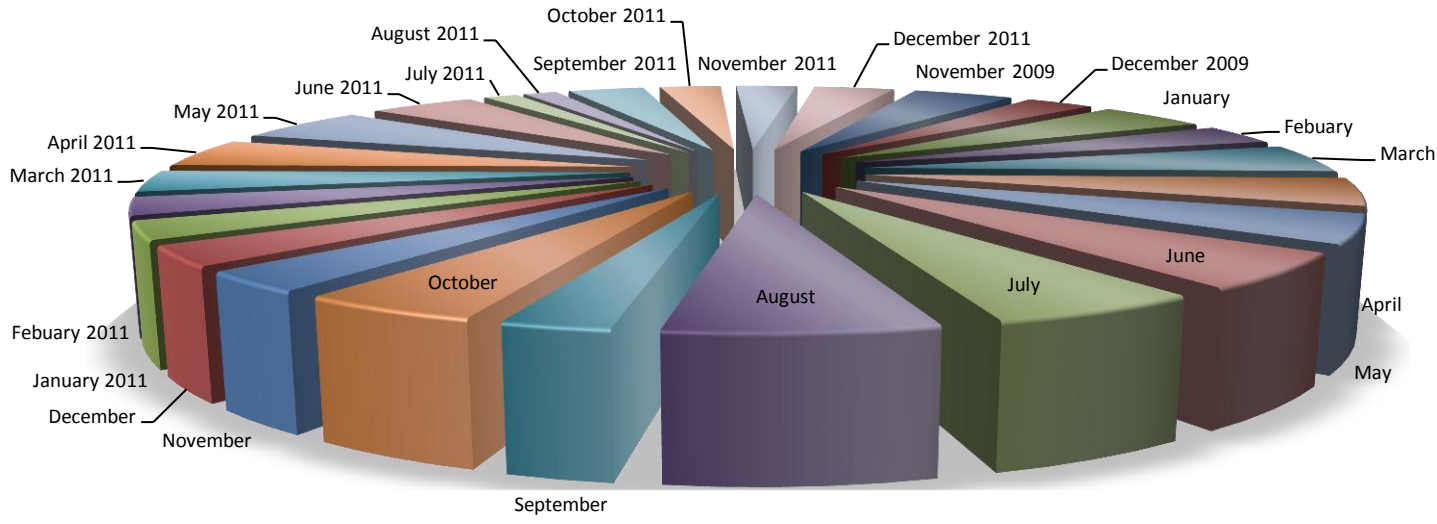
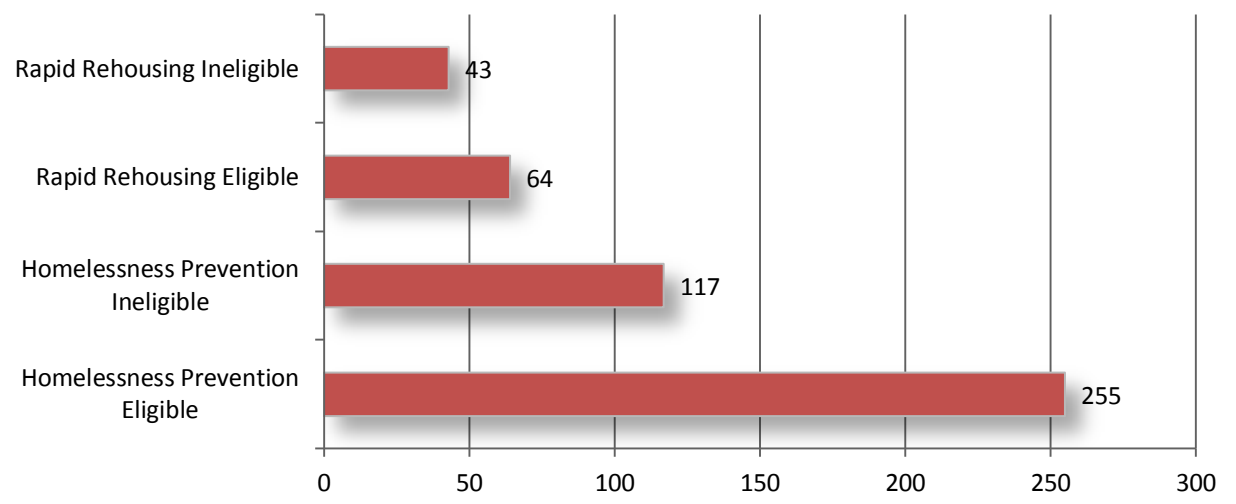
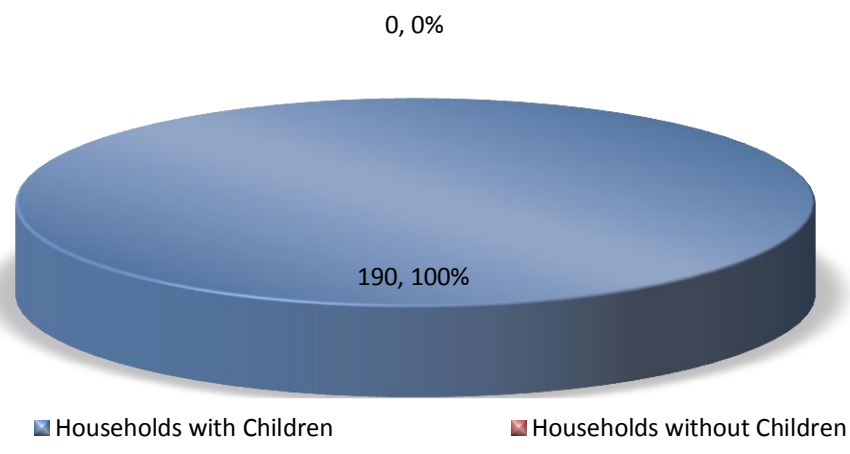
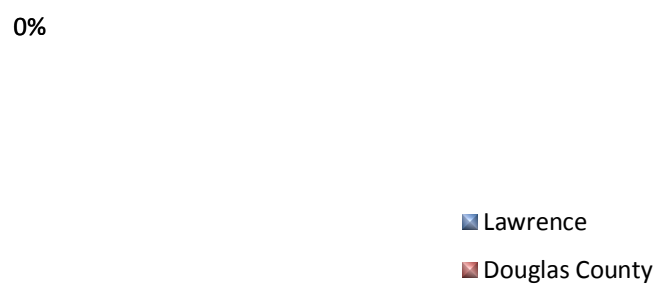


Homelessness Prevention & Rapid Re-Housing Program Snapshot 1.30.12

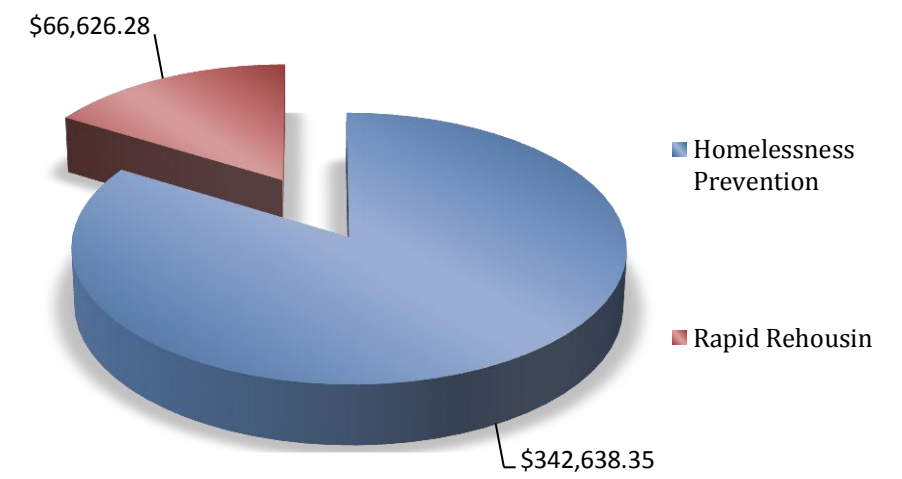


Totals to Date	
Homelessness Prevention Eligible	255
Homelessness Prevention Ineligible	117
Homelessness Prevention Funded	248
Rapid Rehousing Eligible	64
Rapid Rehousing Ineligible	43
Rapid Rehousing Funded	39
Total Applications Eligible	319
Total Applications Processed	479

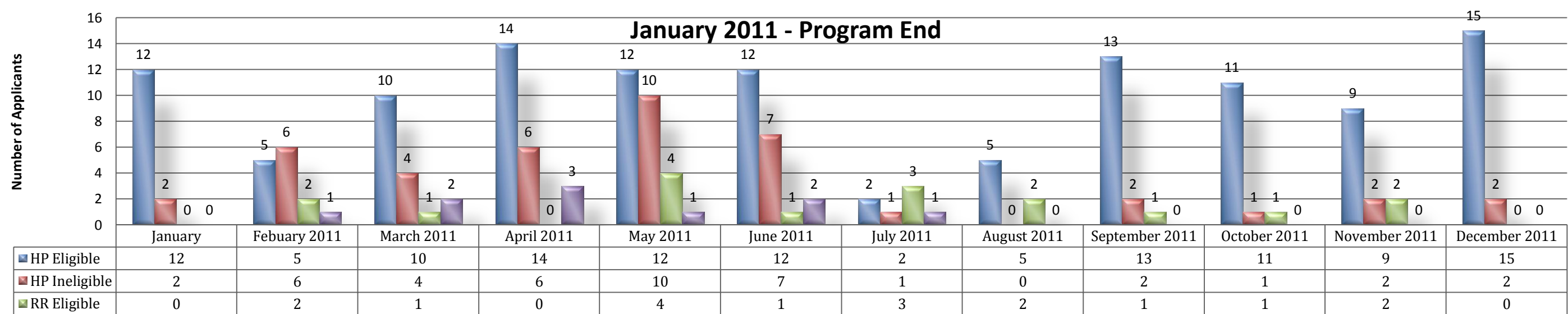
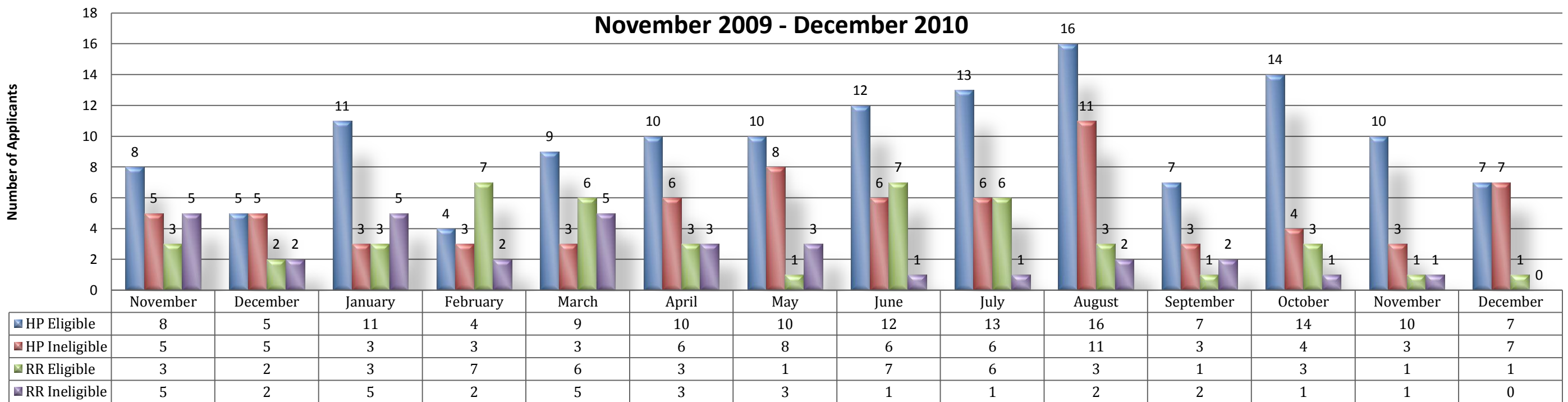
Program Averages	
Average Applications Per Month	18
Average Eligible by Month	12
Eligible By Month Percentage	66.67%



Amount Spent To Date	
Homelessness Prevention	\$342,638.35
Rapid Rehousing	\$66,626.28
Total	\$409,264.63



Clients Paid Breakdown	
Number Of Adults	389
Number of Children	390
Total Households	#VALUE!
Households with Children	190
Households without Children	#VALUE!
Total People Funded	779



Program Data			Total Applications				
From November 2009 through			Year	HP Eligible	RR Eligible	HP Ineligible	RR Ineligible
Total Households Who Applied	479		2009-2010	136	47	73	33
Found Eligible	319		Total Applications			289	
Avoided eviction by receiving rent and utility assistance	248		Homelessness Prevention			209	72.32%
Homeless Households that received financial assistance	39		Rapid Re-Housing			80	27.68%
Homeless Households that received case management services and became housed without financial assistance	9						
Veterans that received assistance and became housed	12 (10 HP, 2 RR)						
Households that received funding	287						
Households had minor children in the household	190						
Overall a total of	779		Year	HP Eligible	RR Eligible	HP Ineligible	RR Ineligible
individuals avoided eviction or obtained housing through this program by receiving rent and utility assistance.			2011	120	17	43	10
Program Expenses			Total Applications			190	
Homelessness Prevention	\$342,638.35		Homelessness Prevention			163	85.79%
Rapid Re-Housing	\$66,626.28		Rapid Re-Housing			27	14.21%
	Grand Total	\$409,264.63					

Applicants			Total Applications				
On average the total applications we receive by month is:	18		Year	HP Eligible	RR Eligible	HP Ineligible	RR Ineligible
On average the total of those who are found eligible are:	12		Entire Program	256	64	116	43
That averages out to an eligibility ratio of:	66.67%		Total Applications			479	
			Homelessness Prevention			372	77.66%
			Rapid Re-Housing			107	22.34%