

TOTAL BUILDING AREA = 4,670 SF
 TOTAL FLOOR AREA = 4,324 SF
 MAXIMUM OCCUPANT LOAD = 293

Santa fe Station
 413 E 7th Street
 Lawrence, Kansas

Hernly ASSOCIATES

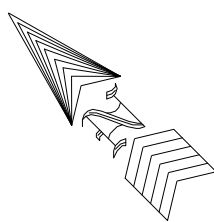
920 Massachusetts
 Lawrence, Kansas
 66044
 785 - 749 - 5806
 FAX 785 - 749 - 1515

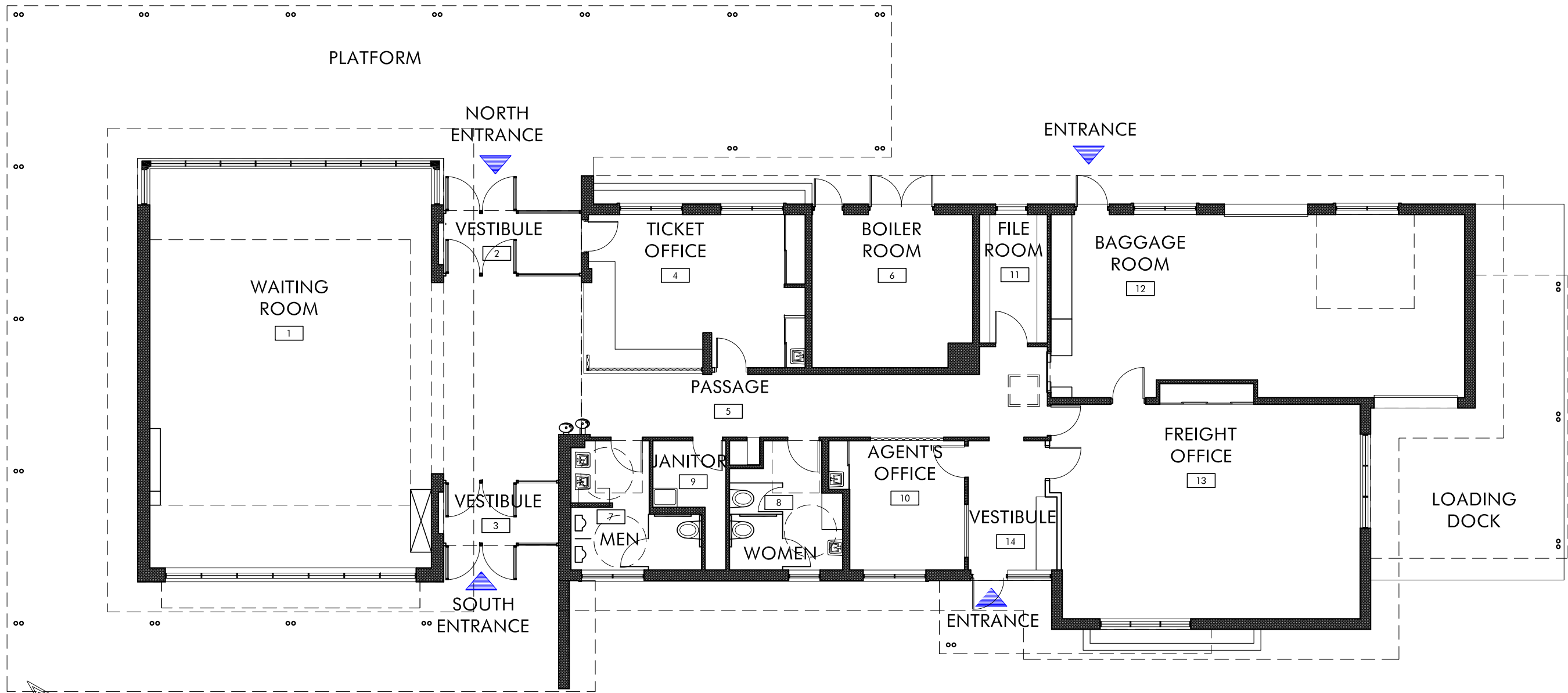
PLAN

Date: 12/02/09
 Drawn by :
 Checked by :
 Revisions :

1 EXISTING/ORIGINAL FLOOR PLAN
 3/32" = 1'-0"

A1.1





Santa fe Station
 413 E 7th Street
 Lawrence, Kansas

Hernly
 ASSOCIATES

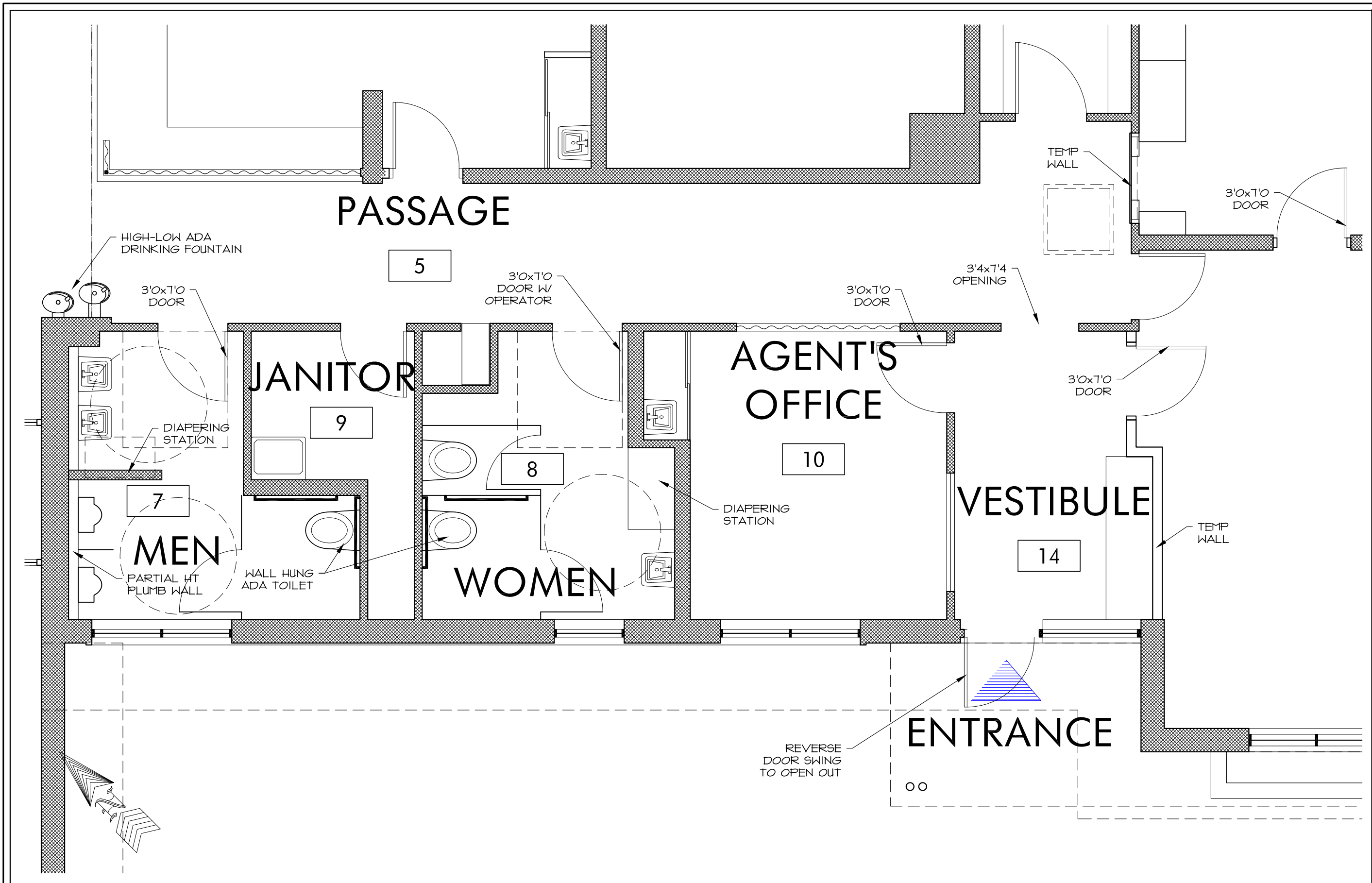
920 Massachusetts
 Lawrence, Kansas
 66044
 785 - 749 - 5806
 FAX 785 - 749 - 1515

PLAN

Date: 12/02/09
 Drawn by :
 Checked by :
 Revisions :

1 PROPOSED FLOOR PLAN
 3/32" = 1'-0"

A1.2



Santa fe Station
 413 E 7th Street
 Lawrence, Kansas

Hernly
 ASSOCIATES

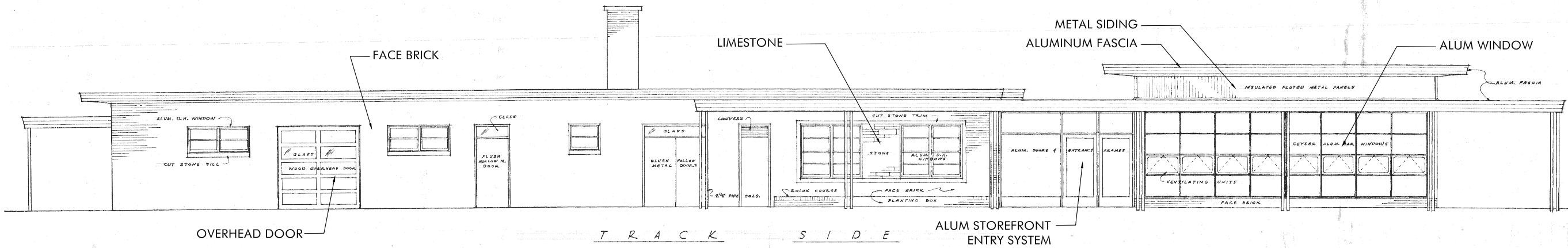
920 Massachusetts
 Lawrence, Kansas
 66044
 785 - 749 - 5806
 FAX 785 - 749 - 1515

PLAN

Date: 12/02/09
 Drawn by :
 Checked by :
 Revisions :

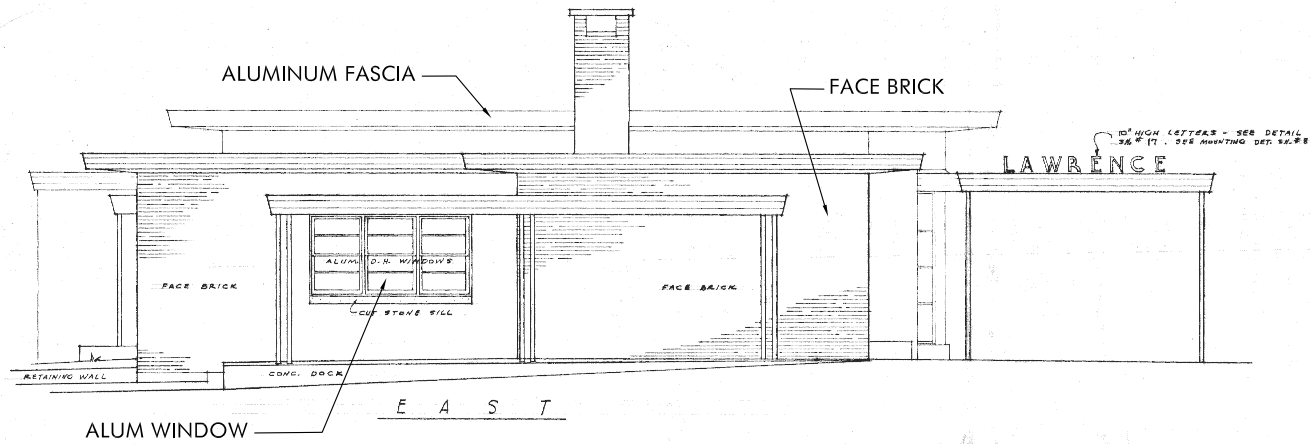
1 PROPOSED FLOOR PLAN
 1/4" = 1'-0"

A1.3



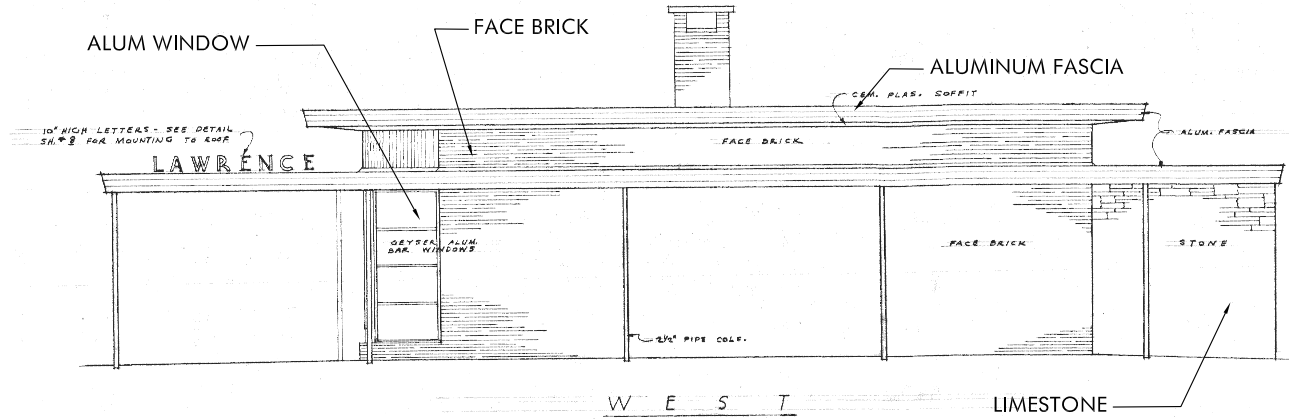
4 NORTH ELEVATION

3/32" = 1'-0"



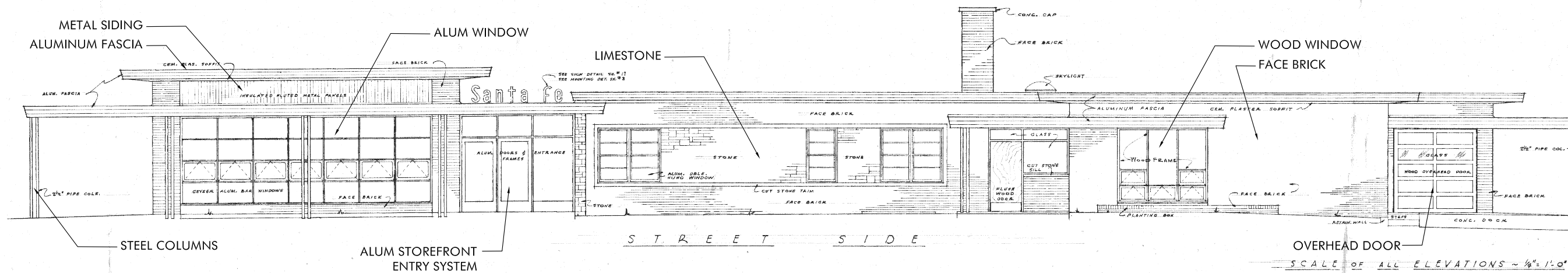
2 EAST ELEVATION

3/32" = 1'-0"



3 WEST ELEVATION

3/32" = 1'-0"



1 SOUTH ELEVATION

3/32" = 1'-0"

SCALE OF ALL ELEVATIONS ~ 1/8" = 1'-0"

Santa fe Station
413 E 7th Street
Lawrence, Kansas

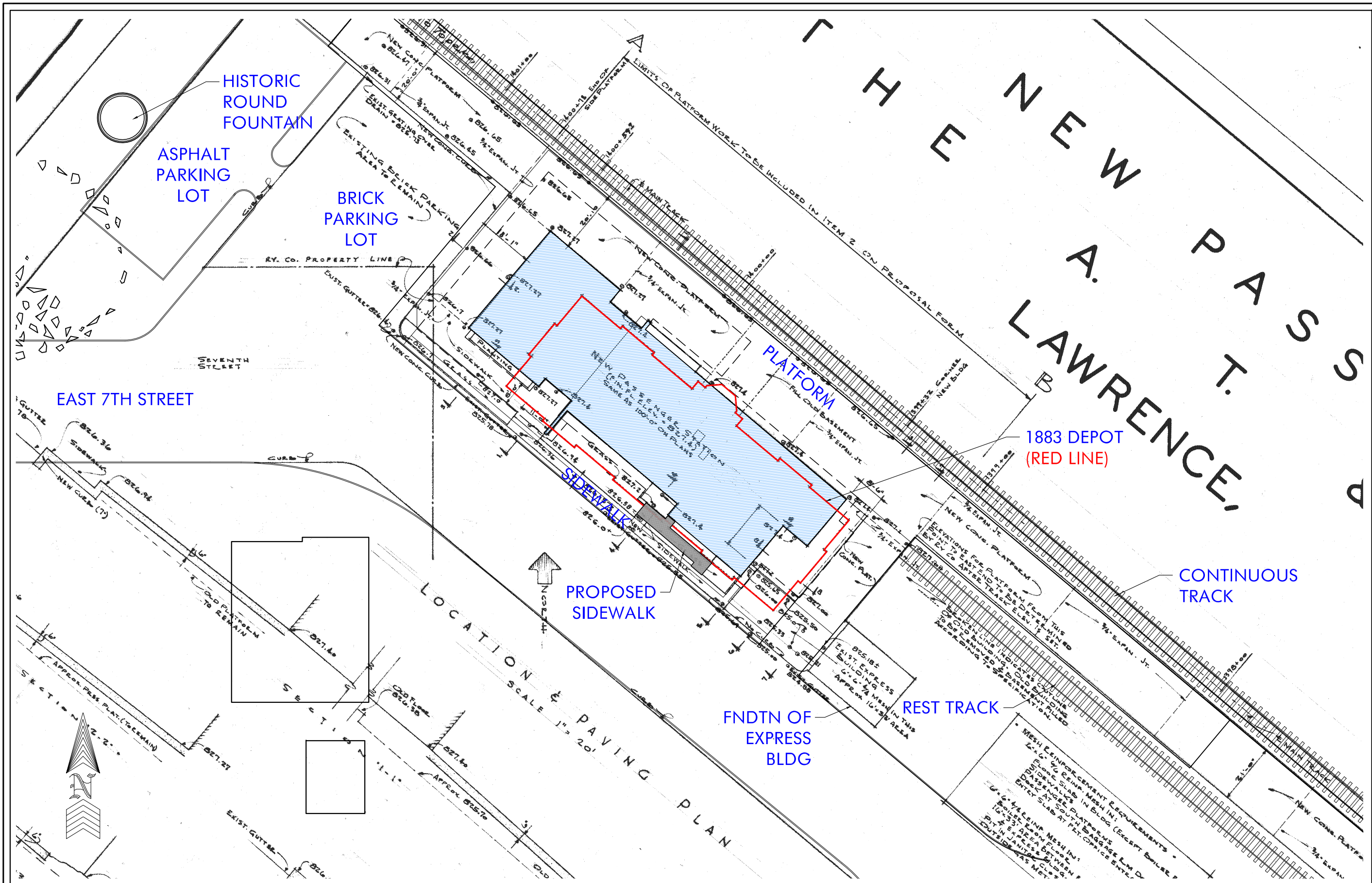
Hernly
ASSOCIATES

920 Massachusetts
Lawrence, Kansas
66044
785 - 749 - 5806
FAX 785 - 749 - 1515

DRAWINGS

Date: 12/02/09
Drawn by :
Checked by :
Revisions :

A2.1



Santa fe Station
 413 E 7th Street
 Lawrence, Kansas

Hernly
 ASSOCIATES

920 Massachusetts
 Lawrence, Kansas
 66044
 785 - 749 - 5806
 FAX 785 - 749 - 1515

PLAN

Date: 12/02/09
 Drawn by:
 Checked by:
 Revisions:

1 SITE PLAN
 1" = 30'-0"

C1.1