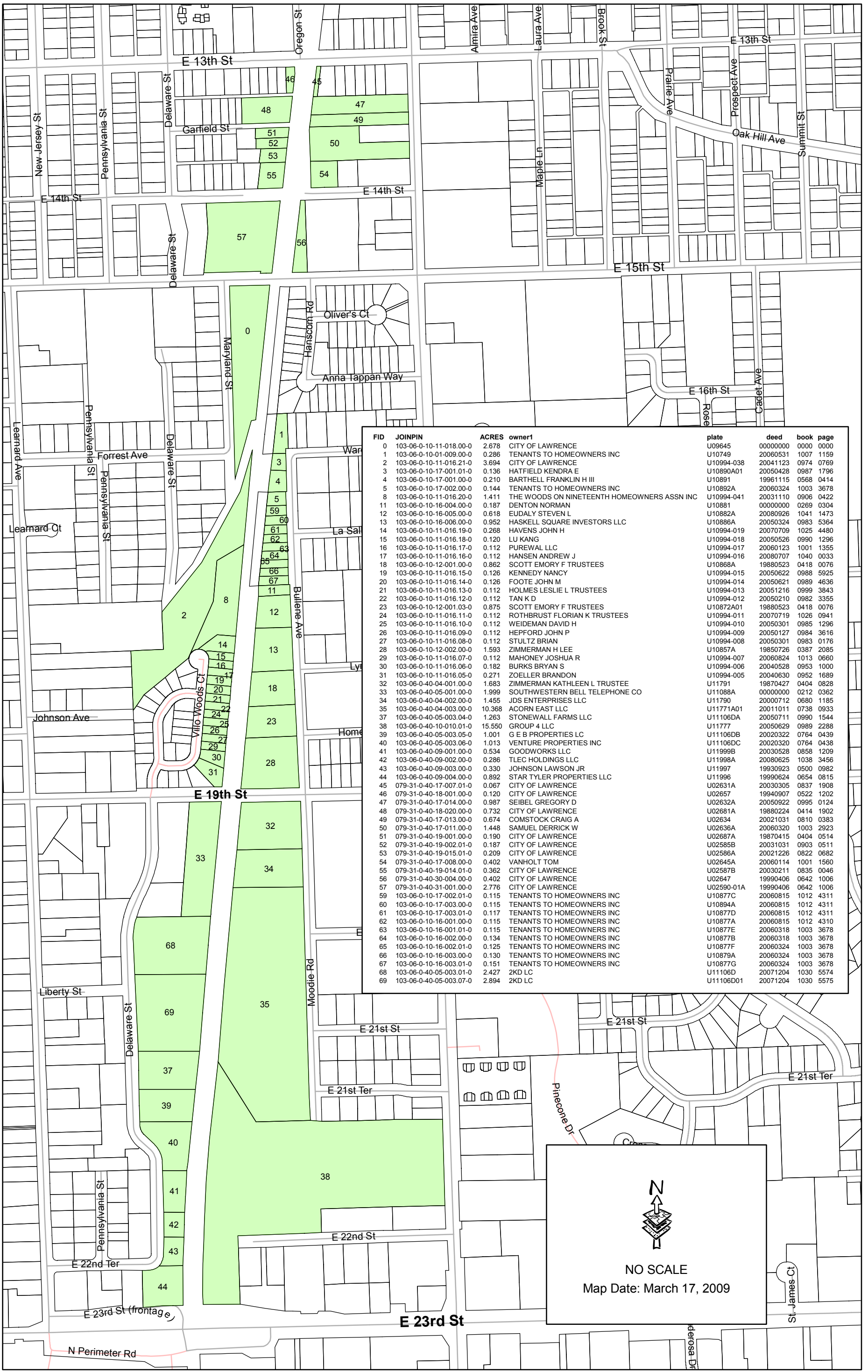



Exhibit A



FID	JOINPIN	ACRES	owner1	plate	deed	book	page
0	103-06-0-10-11-018.00-0	2.678	CITY OF LAWRENCE	U09645	00000000	0000	0000
1	103-06-0-10-01-009.00-0	0.286	TENANTS TO HOMEOWNERS INC	U10749	20060531	1007	1159
2	103-06-0-10-11-016.21-0	3.694	CITY OF LAWRENCE	U10994-038	20041123	0974	0769
3	103-06-0-10-17-001.01-0	0.136	HATFIELD KENDRA E	U10890A01	20050428	0987	1796
4	103-06-0-10-17-001.00-0	0.210	BARTHELL FRANKLIN H III	U10891	19961115	0568	0414
5	103-06-0-10-17-002.00-0	0.144	TENANTS TO HOMEOWNERS INC	U10892A	20060324	1003	3678
8	103-06-0-10-11-016.20-0	1.411	THE WOODS ON NINETEENTH HOMEOWNERS ASSN INC	U10994-041	20031110	0906	0422
11	103-06-0-10-16-004.00-0	0.187	DENTON NORMAN	U10881	00000000	0269	0304
12	103-06-0-10-16-005.00-0	0.618	EUDALY STEVEN L	U10882A	20080926	1041	1473
13	103-06-0-10-16-006.00-0	0.952	HASKELL SQUARE INVESTORS LLC	U10886A	20050324	0983	5364
14	103-06-0-10-11-016.19-0	0.268	HAVENS JOHN H	U10994-019	20070709	1025	4480
15	103-06-0-10-11-016.18-0	0.120	LU KANG	U10994-018	20050526	0990	1296
16	103-06-0-10-11-016.17-0	0.112	PUREVAL LLC	U10994-017	20060123	1001	1355
17	103-06-0-10-11-016.16-0	0.112	HANSEN ANDREW J	U10994-016	20080707	1040	0033
18	103-06-0-10-12-001.00-0	0.862	SCOTT EMORY F TRUSTEES	U10868A	19880523	0418	0076
19	103-06-0-10-11-016.15-0	0.126	KENNEDY NANCY	U10994-015	20050622	0988	5925
20	103-06-0-10-11-016.14-0	0.126	FOOTE JOHN M	U10994-014	20050621	0989	4636
21	103-06-0-10-11-016.13-0	0.112	HOLMES LESLIE L TRUSTEES	U10994-013	20051216	0999	3843
22	103-06-0-10-11-016.12-0	0.112	TAN K D	U10994-012	20050210	0982	3355
23	103-06-0-10-12-001.03-0	0.875	SCOTT EMORY F TRUSTEES	U10872A01	19880523	0418	0076
24	103-06-0-10-11-016.11-0	0.112	ROTHBRUST FLORIAN K TRUSTEES	U10994-011	20070719	1026	0941
25	103-06-0-10-11-016.10-0	0.112	WEIDEMAN DAVID H	U10994-010	20050301	0985	1296
26	103-06-0-10-11-016.09-0	0.112	HEPFORD JOHN P	U10994-009	20050127	0984	3616
27	103-06-0-10-11-016.08-0	0.112	STULTZ BRIAN	U10994-008	20050301	0983	0176
28	103-06-0-10-12-002.00-0	1.593	ZIMMERMAN H LEE	U10857A	19850726	0387	2085
29	103-06-0-10-11-016.07-0	0.112	MAHONEY JOSHUA R	U10994-007	20060824	1013	0660
30	103-06-0-10-11-016.06-0	0.182	BURKS BRYAN S	U10994-006	20040528	0953	1000
31	103-06-0-10-11-016.05-0	0.271	ZOELLER BRANDON	U10994-005	20040630	0952	1689
32	103-06-0-40-04-001.00-0	1.683	ZIMMERMAN KATHLEEN L TRUSTEE	U11791	19870427	0404	0828
33	103-06-0-40-05-001.00-0	1.999	SOUTHWESTERN BELL TELEPHONE CO	U11088A	00000000	0212	0362
34	103-06-0-40-04-002.00-0	1.455	JDS ENTERPRISES LLC	U11790	20000712	0680	1185
35	103-06-0-40-04-003.00-0	10.368	ACORN EAST LLC	U11771A01	20011011	0738	0933
37	103-06-0-40-05-003.04-0	1.263	STONEWALL FARMS LLC	U11106DA	20050711	0990	1544
38	103-06-0-40-10-010.01-0	15.550	GROUP 4 LLC	U11777	20050629	0989	2288
39	103-06-0-40-05-003.05-0	1.001	G E B PROPERTIES LC	U11106DB	20020322	0764	0439
40	103-06-0-40-05-003.06-0	1.013	VENTURE PROPERTIES INC	U11106DC	20020320	0764	0438
41	103-06-0-40-09-001.00-0	0.534	GOODWORKS LLC	U11999B	20030528	0858	1209
42	103-06-0-40-09-002.00-0	0.286	TLEC HOLDINGS LLC	U11998A	20080625	1038	3456
43	103-06-0-40-09-003.00-0	0.330	JOHNSON LAWSON JR	U11997	19930923	0500	0982
44	103-06-0-40-09-004.00-0	0.892	STAR TYLER PROPERTIES LLC	U11996	19990624	0654	0815
45	079-31-0-40-17-007.01-0	0.067	CITY OF LAWRENCE	U02631A	20030305	0837	1908
46	079-31-0-40-18-001.00-0	0.120	CITY OF LAWRENCE	U02657	19940907	0522	1202
47	079-31-0-40-17-014.00-0	0.987	SEIBEL GREGORY D	U02632A	20050922	0995	0124
48	079-31-0-40-18-020.00-0	0.732	CITY OF LAWRENCE	U02681A	19880224	0414	1902
49	079-31-0-40-17-013.00-0	0.674	CUMSTOCK CRAIG A	U02634	20021031	0810	0383
50	079-31-0-40-17-011.00-0	1.448	SAMUEL DERRICK W	U02636A	20060320	1003	2923
51	079-31-0-40-19-001.00-0	0.180	CITY OF LAWRENCE	U02687A	19870415	0404	0514
52	079-31-0-40-19-002.01-0	0.187	CITY OF LAWRENCE	U02585B	20031031	0903	0511
53	079-31-0-40-19-015.01-0	0.209	CITY OF LAWRENCE	U02586A	20021226	0822	0682
54	079-31-0-40-17-008.00-0	0.402	VANHOLT TOM	U02645A	20060114	1001	1560
55	079-31-0-40-19-014.01-0	0.362	CITY OF LAWRENCE	U02587B	20030211	0835	0046
56	079-31-0-40-30-004.00-0	0.402	CITY OF LAWRENCE	U02647	19990406	0642	1006
57	079-31-0-40-31-001.00-0	2.776	CITY OF LAWRENCE	U02590-01A	19990406	0642	1006
59	103-06-0-10-17-002.01-0	0.115	TENANTS TO HOMEOWNERS INC	U10877C	20060815	1012	4311
60	103-06-0-10-17-003.00-0	0.115	TENANTS TO HOMEOWNERS INC	U10894A	20060815	1012	4311
61	103-06-0-10-17-003.01-0	0.117	TENANTS TO HOMEOWNERS INC	U10877D	20060815	1012	4311
62	103-06-0-10-16-001.00-0	0.115	TENANTS TO HOMEOWNERS INC	U10877A	20060815	1012	4310
63	103-06-0-10-16-001.01-0	0.115	TENANTS TO HOMEOWNERS INC	U10877E	20060318	1003	3678
64	103-06-0-10-16-002.00-0	0.134	TENANTS TO HOMEOWNERS INC	U10877B	20060318	1003	3678
65	103-06-0-10-16-002.01-0	0.125	TENANTS TO HOMEOWNERS INC	U10877F	20060324	1003	3678
66	103-06-0-10-16-003.00-0	0.130	TENANTS TO HOMEOWNERS INC	U10879A	20060324	1003	3678
67	103-06-0-10-16-003.01-0	0.151	TENANTS TO HOMEOWNERS INC	U10877G	20060324	1003	3678
68	103-06-0-40-05-003.01-0	2.427	2KD LC	U11106D	20071204	1030	5574
69	103-06-0-40-05-003.07-0	2.894	2KD LC	U11106D01	20071204	1030	5575


 NO SCALE
 Map Date: March 17, 2009